

REGIONAL REVIEW

CLARE/GALWAY REGIONAL ANNUAL REVIEW 2021

GALWAY/CLARE DATA



170,900
BEEF COWS



312,300
SHEEP EWES



74,300
DAIRY COWS



19,000 TOTAL FARMERS

TEAGASC ACTIVITY



SIGNPOST FARMES

8 SIGNPOST FARMS

4 DAIRY, 1 SHEEP
1 CALF TO BEEF
2 SUCKLER

5,000 TEAGASC CLIENTS
2 EDUCATION OFFICERS
2 ASSAP ADVISORS

3,600 ENVIRONMENTAL SUPPORT SCHEMES
26 TEAGASC ADVISORS
9 ADMINISTRATION OFFICERS

Welcome

Galway/Clare is one of 12 Teagasc advisory regions nationally. This report summarises the main enterprises in the region and the Teagasc activities in 2021 for the Galway/Clare Region. Teagasc provide a direct advisory service to 5,000 clients in Galway/Clare, the majority are drystock farmers, of which many are part-time.

In addition to providing technical advice and livestock schemes applications, a high proportion of our client base are involved with environmental schemes, such as the national schemes GLAS and REAP, and also the various EIPs and LIFE projects in the region.

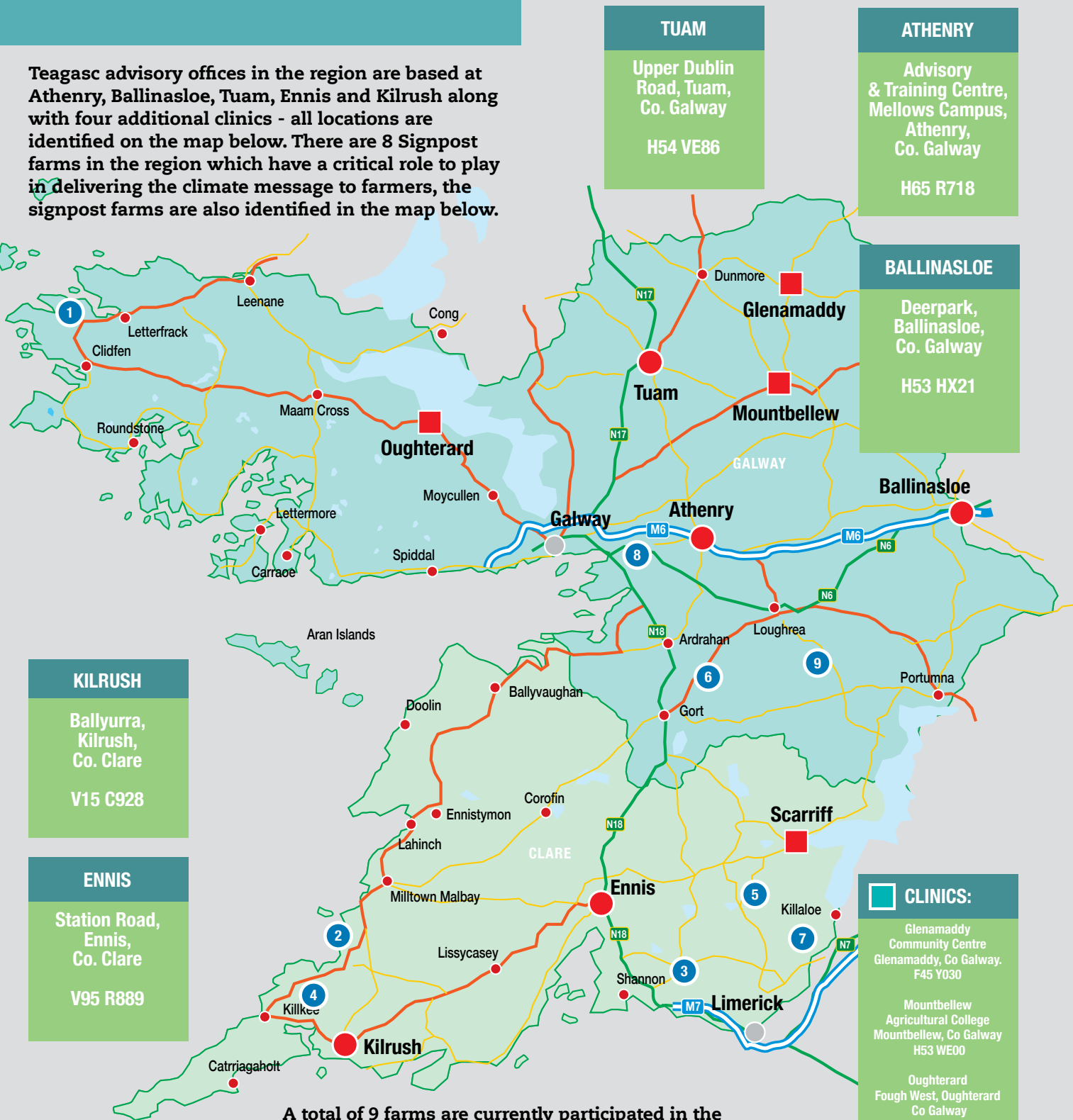
The COVID pandemic and associated restrictions throughout 2021 altered our interaction with clients. Most face-to-face meetings with clients, ie office consultations, group meetings and public events were not possible. Therefore, our use of phone consultations, on-line webinars and social media increased further in 2021. I would like to acknowledge the hard work of staff in the region and commend our stakeholders for their ongoing support during a challenging 2021 year.

Pat Clarke
Galway Clare
Regional Manager



TEAGASC GALWAY/CLARE REGIONAL OFFICES

Teagasc advisory offices in the region are based at Athenry, Ballinasloe, Tuam, Ennis and Kilrush along with four additional clinics - all locations are identified on the map below. There are 8 Signpost farms in the region which have a critical role to play in delivering the climate message to farmers, the signpost farms are also identified in the map below.



TUAM

Upper Dublin Road, Tuam, Co. Galway

H54 VE86

ATHENRY

Advisory & Training Centre, Mellows Campus, Athenry, Co. Galway

H65 R718

BALLINASLOE

Deerpark, Ballinasloe, Co. Galway

H53 HX21

KILRUSH

Ballyurra, Kilrush, Co. Clare

V15 C928

ENNIS

Station Road, Ennis, Co. Clare

V95 R889

CLINICS:

- Glenamaddy Community Centre
Glenamaddy, Co Galway.
F45 Y030
- Mountbellew Agricultural College
Mountbellew, Co Galway
H53 WE00
- Oughterard Fough West, Oughterard
Co Galway
H91ADW7
- Scariff Fossabeg, Scariff, Co Clare
V94 NX58

A total of 9 farms are currently participated in the Signpost/monitor farm programme during 2021

- | | | |
|-------------------------------|-------------|--------------------------------|
| 1. Tomas O'Toole | Letterfrack | Signpost BETTER sheep farm |
| 2. Danny Bermingham | Doonbeg | Heavy Soils programme |
| 3. Sean & Diarmuid Fitzgerald | Cratloe | Signpost Dairy farm (Kerry) |
| 4. Andrew Killeen | Bansha | Signpost Dairy farm (Kerry) |
| 5. Michael Culhane | Killaloe | Signpost DairyBeef 500 farm |
| 6. Aongusta Fahy | Ardrahan | Signpost FutureBeef farm |
| 7. James Shekan | Bridgetown | Signpost FutureBeef farm |
| 8. Tim Kelly | Athenry | Signpost Dairy farm (Aurivo) |
| 9. Conor & Vincent O'Brien | Tynagh | Signpost Dairy farm (Arrabawn) |



REGIONAL REVIEW

CLARE/GALWAY REGIONAL ANNUAL REVIEW 2021

Farming in Galway Clare Region

Land Categorisation - Agricultural area 605,000ha, Commonage 66,800 ha, Rough grazing 78,500 ha

There is a large variation in soil types in the region, See Figure 1. There are significant areas of peat (dark grey), rock (grey), brown earths (brown), gleys (light Blue) and others as represented on the soils map. In addition, there is geographical diversity in the region, from lowlands to mountain and large areas of commonage and rough grazing. This variation has resulted in vastly different farming practices in the region.

Land fragmentation is also a feature of farming in the region, with an average of 4.1 different parcels of owned land per farmer.

28.3Ha AVG. FARM SIZE
50% FARMERS LESS THAN 22Ha
16,000 CATTLE FARMERS
249 TILLAGE FARMS

Weather, in particular rainfall, can have a big impact on farming in the region. 2021 was a normal weather year, with annual rainfall for the Shannon and Athenry MET Eireann stations below the long-term average

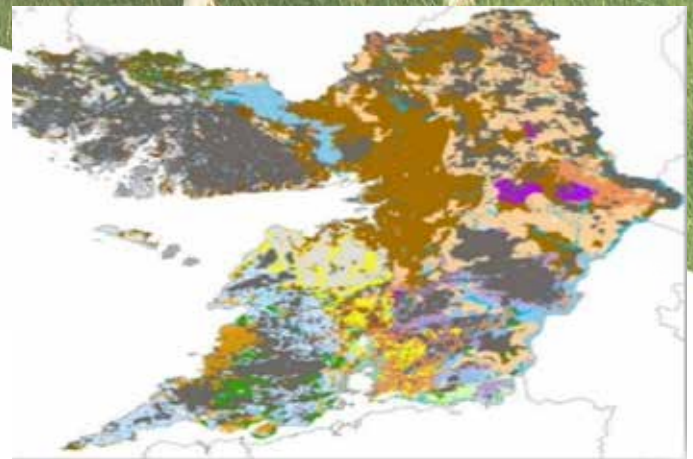
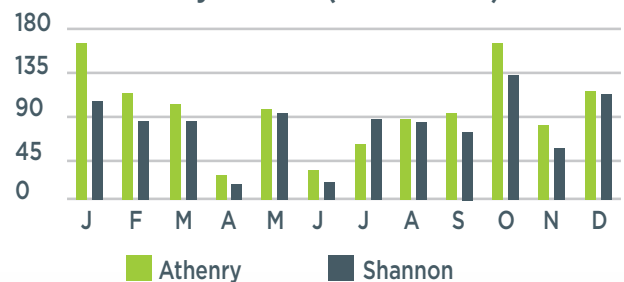


Figure 1: Soils map of Galway/Clare (The soils of Ireland)

● Peat ● Rock ● Brown Earth ● Gleys

Monthly Rainfall (Met Eireann)



FARM ENTERPRISE TYPES



74,300
DAIRY COWS
1,087 FARMERS



170,900
SUCKLER COWS
7,650 FARMERS



312,300
EWES
4,312 FARMERS



TEAGASC GALWAY CLARE REGIONAL ADVISORY TEAM

Teagasc Regional Network Offices

Teagasc is the national body providing integrated research, advisory and training services to the agriculture and food industry and rural communities. The overall goal of the Teagasc Advisory Programme is to support the on-going development of sustainable family farms in Ireland, through efficient and effective knowledge transfer (KT) activities. The programme currently supports almost 140,000 individual farmers with 42,000 farmers contracted to Teagasc for services annually.

Athenry Advisory Office - Tel: 091 845200. Advisory & Training Centre, Mellows Campus, Athenry, Co. Galway H65 R718



Keith Fahy
Business & Technology - Drystock
keith.fahy@teagasc.ie

Marion Fox
Business & Technology - Drystock
marion.fox@teagasc.ie

John Galvin
Business & Technology - Drystock & Tillage
john.galvin@teagasc.ie

Micheal Kelly
Business & Technology - Drystock
micheal.kelly@teagasc.ie

Joanne Masterson
Business & Technology - Drystock
joanne.masterson@teagasc.ie

Colm Murray
Business & Technology - Drystock
colm.murray@teagasc.ie

Tom Murphy
Business & Technology - Dairy
tom.murphy@teagasc.ie

Serena Gibbons
Education Officer
serena.gibbons@teagasc.ie

Ivan Kelly - Agricultural Sustainability Support & Advisory Program (ASSAP)
ivan.kelly@teagasc.ie

Michael O'Connor
Walsh Scholarship Programme

Jennifer Bracken
Walsh Scholarship Programme

Pat Clarke
Regional Manager

Breda Geraghty
Administration

Denise Flaherty
Administration

Martina Donnelly
Business & Technology - Drystock
martina.donnelly@teagasc.ie

Ballinasloe Advisory Office - Tel 090 9642456 Deerpark, Ballinasloe, Co. Galway H53 HX21



Barbara Kenny
Administration

Laura Tierney
Administration

Shauna Fitzmaurice
Business & Technology - Drystock
shauna.fitzmaurice@teagasc.ie

Bernie Leahy
Business & Technology - Drystock
bernie.leahy@teagasc.ie

Colm Kelly
Business & Technology - Drystock
colm.kelly@teagasc.ie

Niall Treanor
Business & Technology - Drystock
niall.treanor@teagasc.ie

Tuam Advisory Office - Tel: 093 28123 Upr. Dublin Road, Tuam, Co. Galway H54 VE86



Anne Connelly
Administration

Eddie Webb
Soils & Environment
edward.webb@teagasc.ie

Glen Corbett
Soils & Environment
glen.corbett@teagasc.ie

Michael Donoghue
Business & Technology - Dairy
michael.donoghue@teagasc.ie

Gabriel Trayers
Business & Technology -
Drystock
gabriel.trayers@teagasc.ie

Maria Yates
Galway/Clare Staff Officer

Ennis Advisory Office - Tel: 065 6828676 Station Road, Ennis, Co. Clare V95 R889 -



Mary Grogan
Administration

Andrea Donnellan
Administration
Tel: 065 6828676

**Paula Browne -Agricultural
Sustainability Support & Advisory
Programme (ASSAP)**
paula.browne@teagasc.ie

Aidan Bugler
Business & Technology - Dairy
aidan.bugler@teagasc.ie

Martina Enright
Business & Technology - Drystock
martina.enright@teagasc.ie

Tom Gleeson
Business & Technology - Drystock
tom.gleeson@teagasc.ie

Michael Neylon
Business & Technology - Drystock
michael.neylon@teagasc.ie

Conor O'Reilly
Business & Technology - Drystock
conor.oreilly@teagasc.ie

Paul Mullins
Soils & Environment

Declan Murphy
Soils & Environment
declan.murphy@teagasc.ie

Joey Larkin
Education
joey.larkin@teagasc.ie

Kilrush Advisory Office - Tel: 065 9051189 Ballyurra, Kilrush, Co. Clare V15 C928



Mary O'Connor
Administration

Michael Dillon
Business & Technology - Drystock
michael.dillon@teagasc.ie

Kenneth Farrell
Business & Technology - Drystock
kenneth.farrell@teagasc.ie

Niall Kerins
Business & Technology - Drystock
niall.kerins@teagasc.ie

Neily O'Sullivan
Business & Technology - Dairy
neily.osullivan@teagasc.ie

Regional Contacts

Wendy Conlon
Equine
wendy.conlon@teagasc.ie

Noel Kennedy
Forestry
noel.kennedy@teagasc.ie

Michael Somers
Forestry
michael.sommers@teagasc.ie

Dairy Enterprise

There are over 1,000 dairy farmers in Galway/Clare. Dairy farmers supply four milk processors in the region, Arrabawn, Aurivo, Dairygold and Kerry. During 2021, Teagasc continued their joint programmes with those four milk processors

Teagasc activities in Galway/Clare for 2021 included farm walks, discussion groups, grass groups, webinars and office/phone consultations. A new entrant to dairy group continued in 2021.

Nationally, dairy farmers had a good year in 2021. This was underpinned by a number of factors including generally good grass growing conditions, increased milk yield per cow and an increase in the price paid for milk.

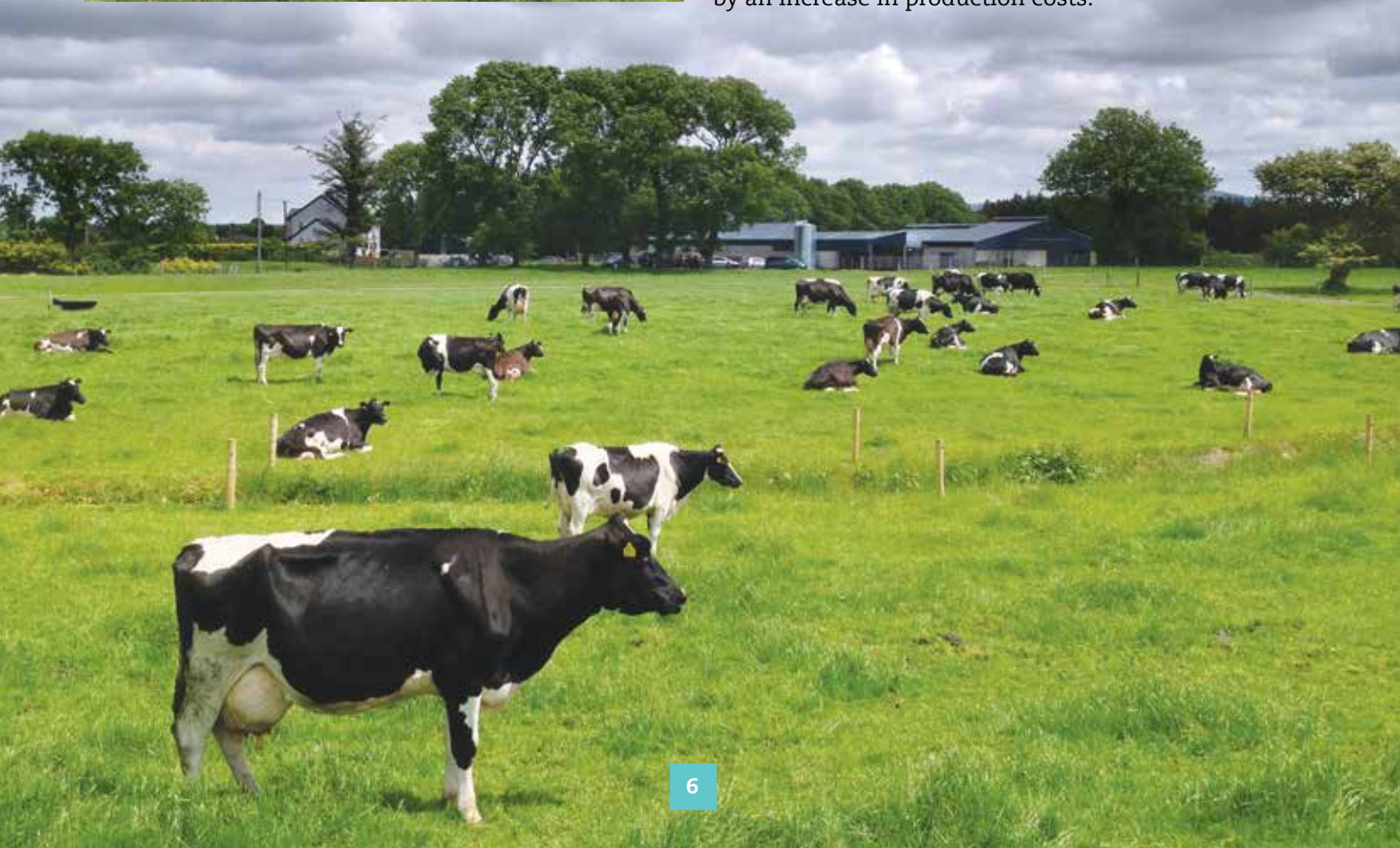


Dairy Farm Walk



However some increases in production costs were also observed including feed and fertiliser costs which increased by 16% and 10% respectively. Currently the 'typical Irish dairy farm' has a herd size, a stocking rate and an average farm size of 83 cows, 2.05 LU/ha and 60 ha respectively.

Assuming that normal weather conditions prevail in 2022, forecasts for the dairy sector indicate a decline in average farm income for 2022. This decline is driven by an increase in production costs.



Grass Growth (Pasturebase Ireland)

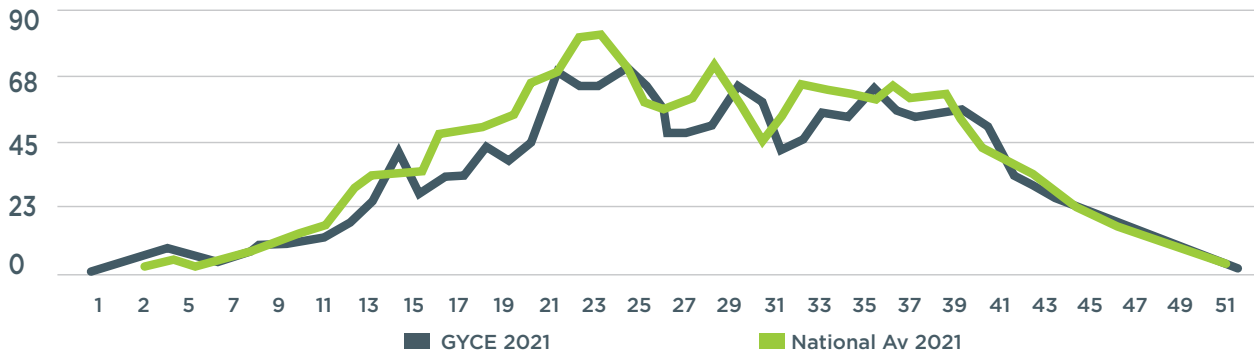


Figure3: Grass Growth Rates for Galway/ Clare and National Data (Pasture Base Ireland)

GALWAY/CLARE DATA

 **74,300**
DAIRY COWS
AVERAGE HERD SIZE 68 cows
1,090 DAIRY FARMS

TEAGASC ACTIVITY

 **4 ADVISORS**

20 DISCUSSION GROUPS


3 SIGNPOST FARMS


TEAGASC CO-OP JOINT PROGRAMME 4



	kg Milk 55s	This Year	Average of previous 3 years	% Differential
2021 Profit	€	5.58	5.26	+6%
Total Variable Costs	€	3.98	3.28	21%
Gross Margin	€	1.58	1.98	-19%
Total Fixed Costs	€	1.27	1.28	-1%
Net Profit (see Operations)	€	0.38	0.68	-43%
Net Farm Profit	€	3.88	3.98	-4%
Net Return To Capital	€	3.88	3.98	-4%
Total Costs	€	2.67	2.68	-1%
Comparable Costs	€	3.88	3.98	-4%
Comparable Profit	€	2.73	2.94	-7%
Cost Flow Ratio (Whole Farm)		97%	97%	0%
Fixed Payments (see below %)		191%	188%	+2%
Total Variable Costs of Adults	€	3.88	3.28	18%
Feed	€	0.88	0.88	0%
Fertiliser	€	0.48	0.48	0%
Animal Health Vet	€	0.29	0.28	4%
Shedding & Fodder Improvement	€	0.18	0.18	0%
Generator Services	€	0.38	0.38	0%
Bank, Salary & Fuel Fuel, Wages	€	0.18	0.18	0%
Other Variable Costs	€	0.38	0.38	0%
Total Fixed Costs of Adults	€	1.27	1.28	-1%
Electricity	€	0.18	0.18	0%
Cost of Power (Electricity) Water	€	0.24	0.21	+14%
Depreciation	€	0.78	0.78	0%
Interest	€	0.68	0.52	+31%
Land Lease	€	0.88	0.78	+11%
Other Fixed Costs	€	0.24	0.21	+14%

Profit Monitor Group Report

ACKNOWLEDGEMENTS

We would like to acknowledge the valuable information provided by and co-operation of:

- Census of Agriculture 2020 CSO Office
- Teagasc National Farm Survey
- DAFM

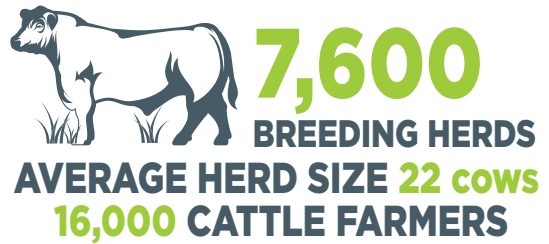
Beef Enterprise

There are 16k cattle farmers in the Galway/Clare region. Farm fragmentation and the nature of soils result in large areas of the region suitable for suckling, and the region has 18% of the national suckler cow herd. Cattle trading levels are high, with weanling sales in Autumn contributing substantially to farm output.

Teagasc activities in 2021 for beef clients include consultations, newsletters, farm visits, webinars and video material. Applications for BEEPS and BDGP were also processed and assistance was provided for clients who faced BEAM deadlines in June and December of 2021.

Nationally, beef farming in 2021 was characterised by a year of rising beef and mart prices but also increasing costs. Weanling and store live prices rose by an average of 8% and 9% per kg respectively with beef carcass prices 12% higher than in 2020. Total costs rose by an average of 8% due especially to increases in feed, fertiliser and energy costs.

GALWAY/CLARE DATA



TEAGASC ACTIVITY



Gross Margin per hectare on cattle rearing farms rose by 5% with a very small increase in net margin per hectare. Total numbers of cattle slaughtered dropped by approximately 90,000 head in 2021 and live exports reduced by over 12,000 head.

It is expected that there will be a further increase in expenditure costs in 2022 on Irish beef farms driven again by increased fertiliser, feed and fuel costs. Beef prices are not expected to change significantly in 2022 due to current high global beef prices, a limit on EU imports due to high shipping costs and an overall drop in beef production within the EU.

Dairy Beef Farmer
Michael Culhane with
Advisor Conor O'Reilly





Sheep Enterprise

There are 4,310 sheep farmers in the region, the majority in Co. Galway. The system is predominantly mid-season lambing with a mixture of lowland flock and hill flocks. Data from the 2019 Flock census shows that the region has 80,000 mountain ewes/crosses and 197,000 lowland ewes/crosses.

Teagasc activities in 2021 for clients included consultations, newsletters, farm visits, webinars and video material. Applications for the sheep welfare scheme are processed for clients.

Irish lamb prices in 2021 are estimated to have increased in the order of 30% on the previous year, according to National Farm Survey (NFS) data, with record high prices being maintained right throughout the year. However, total costs also increased by around 20% resulting in an estimated 26% average increase in gross margin on mid-season lowland sheep systems.



Sheep farm walk with Advisor Glen Corbett on the farm of Daragh Cunniffe.

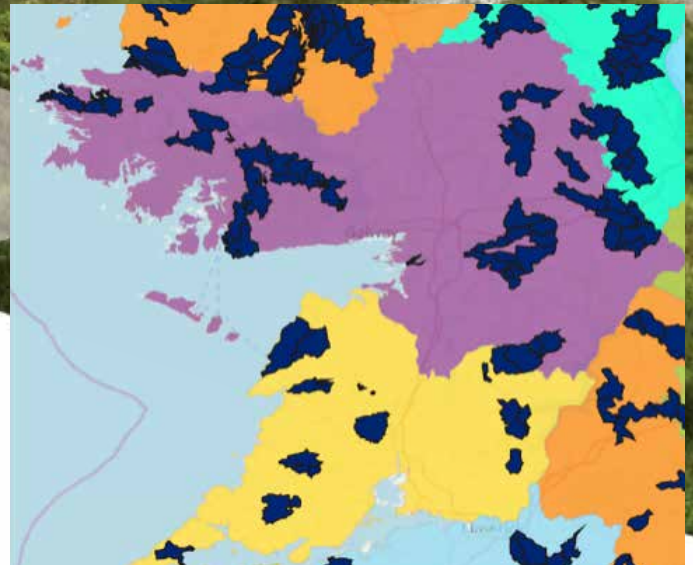
In particular, the cost of concentrate feed for sheep increased by 40% in 2021 due to a combination of an increase in the concentrate price coupled with a significant increase in the volume being fed at farm level. The indications are that lamb prices are set to remain strong, albeit with a modest price decrease of an estimated 5% below the record 2021 levels. However, with much higher production costs in 2022, in particular feed and fertiliser, gross margins are expected to fall.



Signpost Sheep Farmer Open Day, on the farm of Tomas O'Toole, Letterfrack, with Teagasc Advisor Joanne Masterson.

GALWAY/CLARE DATA





Location of Priority Areas for Action (PAA) in Galway/Clare as part of ASSAP are shaded in the Map Above

Environment

Traditionally, there is a high participation of Galway/Clare farms in environmental schemes. Teagasc had 2,900 clients in GLAS in 2021, either in GLAS 3, or rolled over from GLAS 1 & 2.

There were 600 expressions of interest in the new pilot environmental scheme in 2021, of which 350 were selected by the Dept and had plans successfully submitted by Teagasc.

Advisors were also involved in other environmental work in the region, from submitting plans to participation in steering groups and committees. These include Hen Harrier, Burren Programme, Pearl Muscel Programme, Connemara uplands, Caomhnú Árann Project, Wild Atlantic Nature, Machair LIFE and others.

Teagasc plans completed

GLAS	2,900 plans
Hen Harrier	160 plans
Pearl Muscle	15 plans
Burren programme	48 plans
REAP	350 plans



€28.9m

GLAS PAYMENTS

€2.6m

REAP PAYMENTS

ASSAP / Water Quality

There are 23 Priority areas for action (PAA's) in Galway Clare region under the Agricultural Sustainability Support and Advisory Programme (ASSAP). Two advisors continued working with farmers throughout 2021 to help improve water quality in these areas.

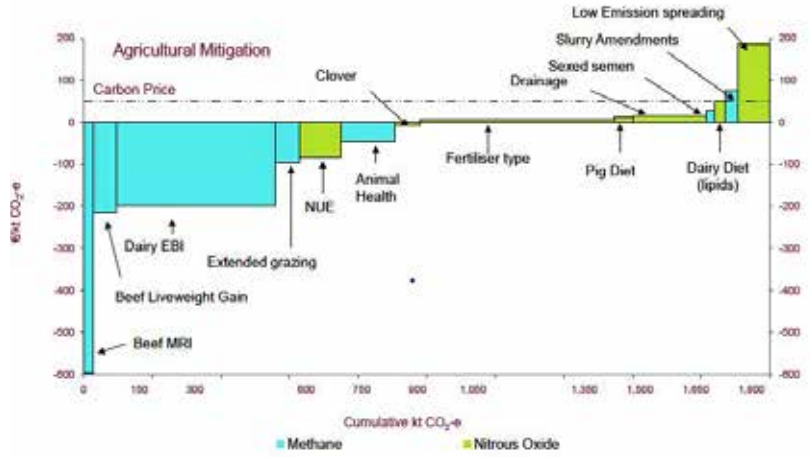
Priority areas for action in 2021 included Castlegar, St Clerans, Rafford, Owenriff, Failmore, Dawros, Recess, Bleach, Doonbeg, Shallee, Lickeen, Doo lough and Annageeragh. COVID restrictions limited the number of completed assessments for 2021. Ongoing collaboration with other bodies including DAFM, DHPLG, LAWPRO and Dairy Sustainability Ireland continued as part of the programme.



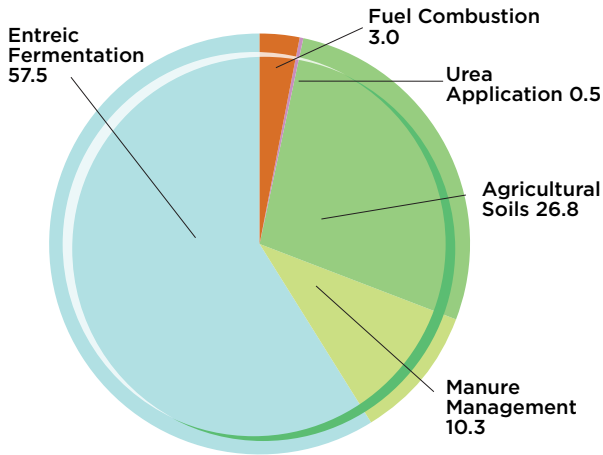
Climate change

Climate change is one of the biggest challenges facing farmers over the next decade. Ambitious targets have now been set for Irish Agriculture between now and 2030 to reduce Green House Gas (GHG) emissions by between 22-30%.

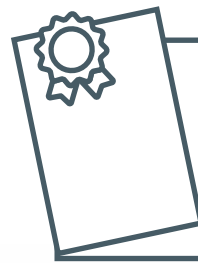
Eight signpost farms were established in Galway/Clare during 2021. The purpose of the Signpost Programme is to demonstrate to farmers locally, what measures farmers need to adapt now to assist Irish Agriculture reach these targets. All the enterprise advisory programmes for 2021 promoted the Marginal Abatement Cost Curve (MACC) practices that were immediately available and ready for farmer adoption



Agricultural GHG Emissions share by Source, 2020



CLIMATE CHANGE
IS ONE OF THE BIGGEST CHALLENGES FACING FARMERS OVER THE NEXT DECADE



15
DEROGATION COURSES





Education

During 2021, there were three part-time courses in Galway/Clare, in Athenry, Kilrush and Ennis.

Two education officers coordinate these classes. Mountbellew and Pallaskenry Agricultural College also contribute to theory and skills delivery for these courses. Delivery of courses was blended in 2021, a mixture of face-to-face classroom and on-line classes. A total of 85 students attended the three courses and there were 56 graduations during 2021.

Health and safety courses were also delivered in the region, eight in total. These were delivered on farm or on-line during restrictions



Cereals

There are less than 250 tillage farmers in Galway/Clare, growing over 3,000 ha. Over 80% of the crops sown are spring barley.

Tillage farming in 2021 could be described as ideal. Despite the cold first half of the year there was adequate plant stands, moisture and sunshine to give high yields. Good weather at harvest allowed all crops to be saved in good condition and the excellent prices increased margins of all crops. The average gross margins increased by 90% compared to 2020. This resulted in a predicted net margins increase of €525 per hectare compared to 2020. There are significant challenges for 2022 with nitrogen fertiliser prices close to three times the costs in 2020. However this cost is somewhat offset by the continued buoyant prices for cereals at the moment.

GALWAY/CLARE DATA

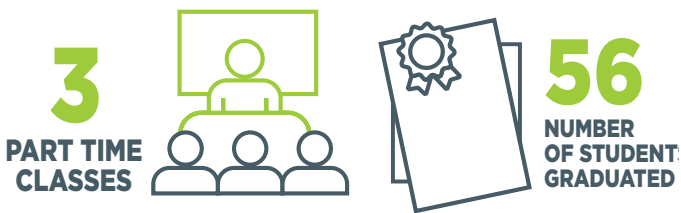


TEAGASC ACTIVITY



2 WEBINARS

12 CLIENT NEWSLETTERS





Farm Management

Advisors in Galway/Clare assist clients with farm management decisions.

These include accessing suitability for the various schemes, analysing financial farm enterprise performance and farm financial planning where significant changes are being implemented. Some outputs in 2021 included:

- Evaluation of financial efficiency of the farm business using the Teagasc Profit Monitor analysis. (138)
- Farm Planning
- Certification of Business Plans for Government Tax reliefs. (91 certificates issued in 2021)
- Farm Succession (2 online public events)
- Basic Payment Application form (4,900 complete)
- Collaborative Farming support and promotion on collaborative farming methods (for example; Registered Farm Partnerships (RFP), Contract Rearing and Share Farming)
- Buildings design support and the associated grant aid scheme (TAMS) for 100 applications

BPS	Basic Payment Scheme (BPS) Programme	€28.5m
Anc	Areas of Natural Constraints Scheme	€41.7m
TAMS	Targeted Agricultural Modernisation Scheme	€1.8m
PM	Profit Monitors	138

Organic Farming

The area of land in organic farming in Galway/Clare is 11,940 ha. The main system of organic farming in the region is drystock.

Teagasc activities in 2021 for organic clients include consultations, newsletters, farm visits, webinars and video material. Applications for organic scheme will be prepared for clients for the 2022 scheme.

Nationally there is approximately 90,000 hectares under organic production in Ireland, which represents 2% of the agricultural area. The current Programme for Government has a target to align Ireland's organic land area with that of the current EU average of 7.5% approx. There are currently 1765 organic farmers participating in the DAFM Organic Farming Scheme (OFS). Funding for the 2022 Organic Farming Scheme (OFS) is up €21 million from the €16 million 2021 allocation, allowing for the opening of the OFS for new entrants in 2022.

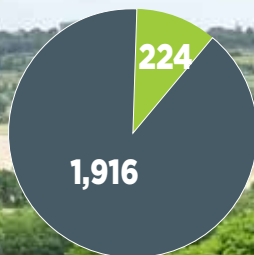
GALWAY/CLARE DATA



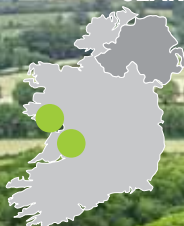
BPS	4,900
TAMS	100
MY FARM PLAN	81

ORGANIC AREA
11,840Ha
50 ORGANICS CLIENTS
GALWAY/CLARE

224 (11.5%)
ORGANIC FARMS
IN GALWAY/CLARE



2,140 ORGANIC
FARMERS NATIONALLY





Forestry

In Galway, forestry cover accounts for 9.9% of land area or 60,605 Ha. This is both privately owned forestry and Coillte owned. There are currently there are 1,512 farm forest owners in County Galway.



FARMS WITH FORESTRY 3,300
AREA GROWN 115,700_{ha}
AREA PLANTED 2021 318_{ha}

GALWAY- 9.9% FORESTRY COVER
CLARE - 17.2% FORESTRY COVER



The percentage of forest cover in County Clare is 17.2% (55,106 Ha). Clare is one of the few counties in Ireland where the forest cover is over the national average of 11%. There are 1,871 private forest owners in Clare. The area of new private planting incl farmers in 2021 was Galway 144 ha and Clare 174 ha.

There are two forestry advisors for the Galway/Clare region. During 2021, advisors activities included one-to-one advice, forestry workshops, virtual forest walks, live broadcasts, timber marketing webinars, forest owner group support, on-site events and forestry input to agricultural education courses.

Nationally, the evolving Irish forest sector is highly important to rural economies and at a national level. There are now 390,000 hectares of private forests. Since 1980, almost 19,000 farmers have received support to establish new forests.

Many private forests are approaching maturity. The mobilisation of this resource represents both a challenge and an excellent opportunity. In Co. Clare alone over 53,000 metres of forest road have been constructed since 2010. This figure for Co. Galway is 38,120 metres over the same period.

New planting in 2021 will be about 2,000 ha, down from 2,434 ha in 2020. The challenge is to sustainably increase planting levels to approach national targets set at 8,000 ha. DAFM's Afforestation Grant and Premium scheme supports planting through afforestation grants and annual premium support.

Equine Enterprise

There are approx 18,000 equines in Galway/Clare. The number of animals is small per farm, but is a significant enterprise on some farms, such as Connemara breeders in Galway. An equine advisor in GYCE also now supports the Teagasc equine specialist team

2021 was a good year with a record number of five figure sales returns at public auctions, improvements in on-line marketing was reflected in prices received. However rising input and production costs emphasise the need to produce quality animals as sustainably as possible.

The equine advisory team provides support across breeding/production, husbandry, sustainability and income generation, all of which were covered in the Let's Talk Equine Webinar series on the first Tuesday of the month. New initiatives in 2021 included the re-establishment of equine newsletters, a photo competition highlighting equines and biodiversity will be sustained in 2022, along with an Equine Health Campaign and sustainability topics relevant to equine.



GALWAY/CLARE DATA



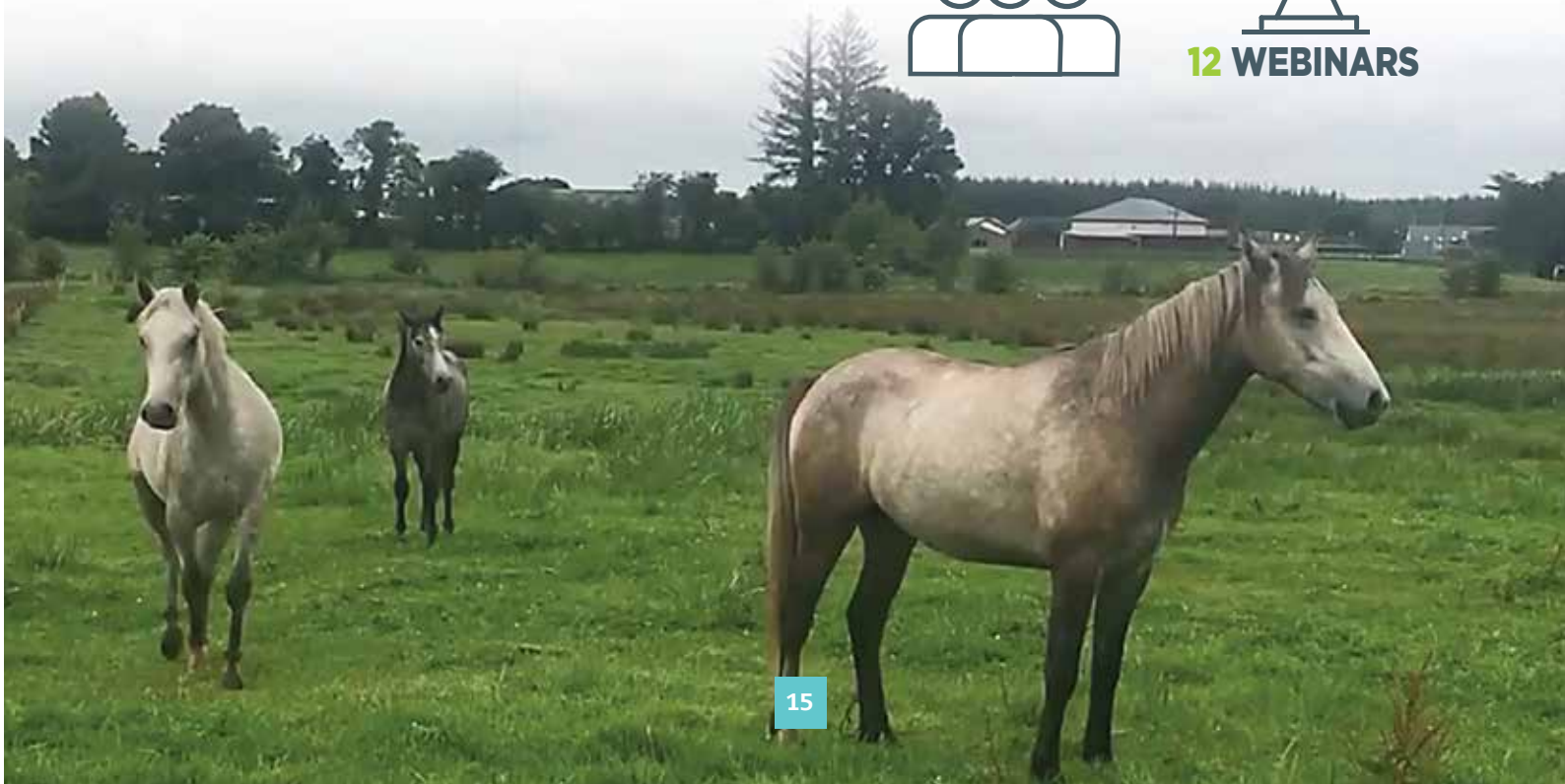
HORSE FARMS

3,200
BREEDING MARES
6,700

TEAGASC ACTIVITY



'Let's talk Equine' Webinar



Media and Social Media...

The Galway/Clare Region has an strong profile on all media platforms.

Weekly technical articles are published on three local newspapers – Connaught Tribune, Tuam Herald and Clare Champion. Staff also contribute weekly interviews to the agricultural programme on Clare FM radio. We also have an active online presence on Twitter and Facebook, and advisors use WhatsApp groups to deliver technical messages and event notifications to their clients. During Covid on-line tools have been used to deliver discussion group meetings and webinars have become a very useful platform in replacing former public events. Farmers have adopted well to those new tools, and they are a very convenient way of delivering key messages. We also posted numerous videos during 2021, with some videos having reached 10k+ views published on social media.



WEBINARS/
VIDEOS
20



50
NEWSPAPER
ARTICLES



50
RADIO
INTERVIEWS



3,700
NO. OF REGIONAL
FACEBOOK
FOLLOWERS

The benefits of being a Teagasc client

Clients have access to Teagasc advisors by phone, arranged on-farm visits, discussion groups etc. Teagasc regional offices are also in regular contact with clients via text and other media about deadlines and other urgent messages.



Teagasc clients receive technical newsletters, tailored to their enterprise mix, ten times per year through the post. In addition the Teagasc magazine **Today's Farm** is also delivered to clients six times per year.

The advice provided by Teagasc regional staff is underpinned by four research programmes

- Crops, Environment and Land Use
- Food
- Rural Economy and Development
- Animal and Grassland Research and Innovation

The Teagasc annual research portfolio comprises some 300 research projects, carried out by 500 scientific and technical staff in our research centres throughout Ireland. In addition to the education officers in each region Teagasc education offers a wide range of agricultural, horticultural, equine and other courses at four Teagasc colleges and works closely with three private colleges.

How do you become a Teagasc client?

Contact your local Teagasc office

