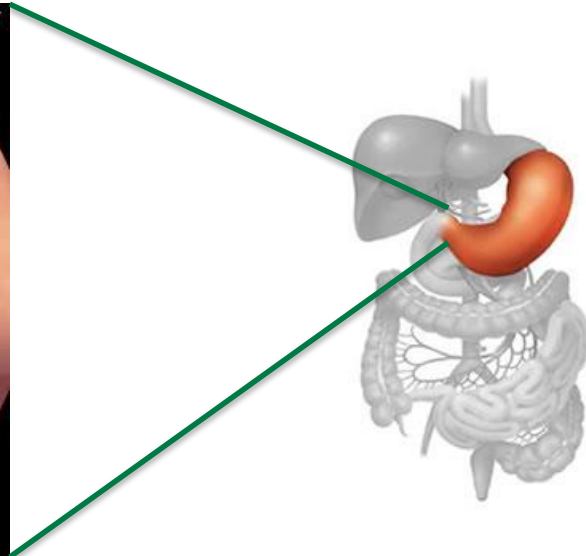


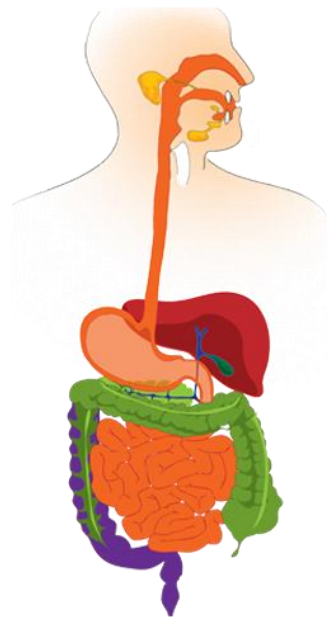
Gastro-intestinal digestive tract



Wireless endoscopy



Simulating Food Digestion – *In Vitro*



Oral phase



Stomach



Intestine

nature
protocols

PROTOCOL

<https://doi.org/10.1038/s41596-018-0119-1>

INFOGEST static in vitro simulation of gastrointestinal food digestion



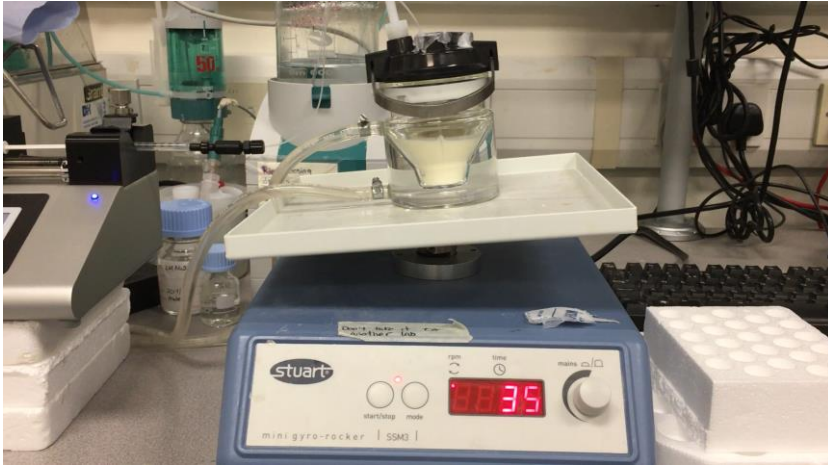
Simulating Food Digestion – In Vitro



nature
protocols

PROTOCOL

<https://doi.org/10.1038/s41596-018-0119-1>

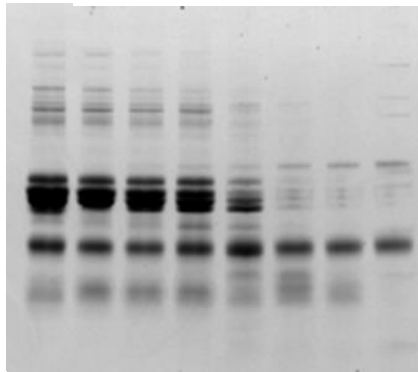


INFOGEST static in vitro simulation of gastrointestinal food digestion



Digestion of whole foods

Digestion of proteins
Gel electrophoresis



→ Pepsin
} Caseins
→ Whey protein

Time of Digestion →



Processing → digestion

Proteins
Fats
Carbohydrates

Minerals
Vitamins
Other minor
Fibre



Whey Proteins



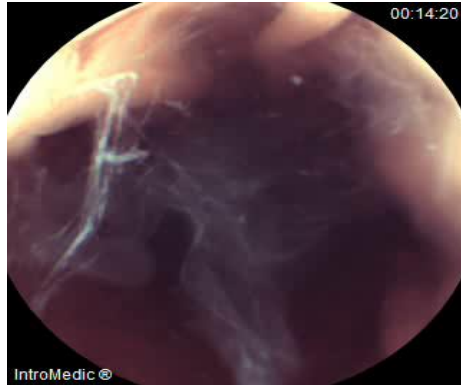
Mirocam[®] In Vivo Imaging



All-Ireland hurler, Teagasc
PhD student and “subject”
"Shane O'Donnell



Fast Whey Proteins vs. Slow Caseins



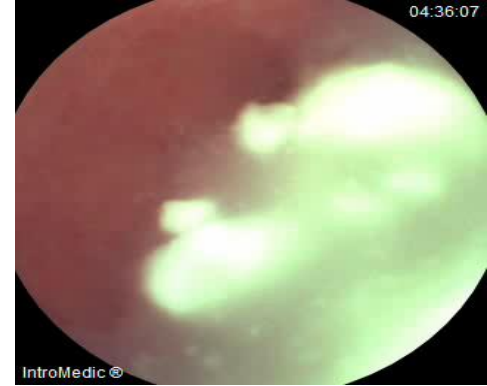
0 minutes



+ 90 min

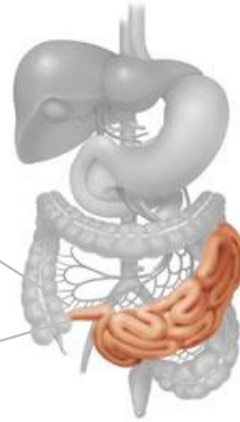
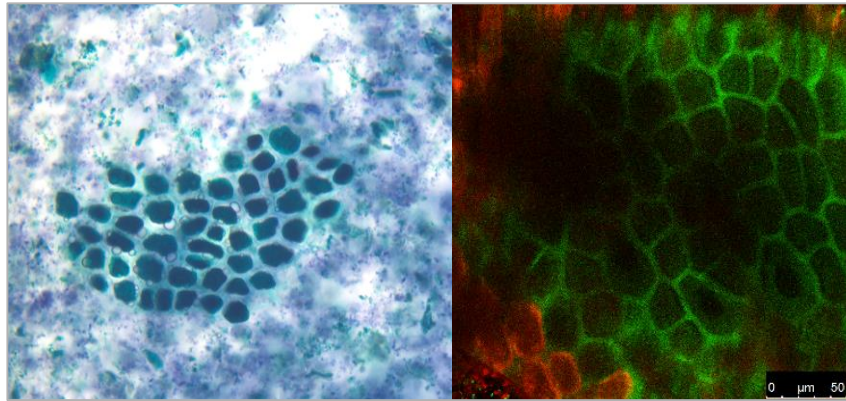


+ 160 min



Commercial Whey proteins

Whole milk



in vitro vs. *in vivo*