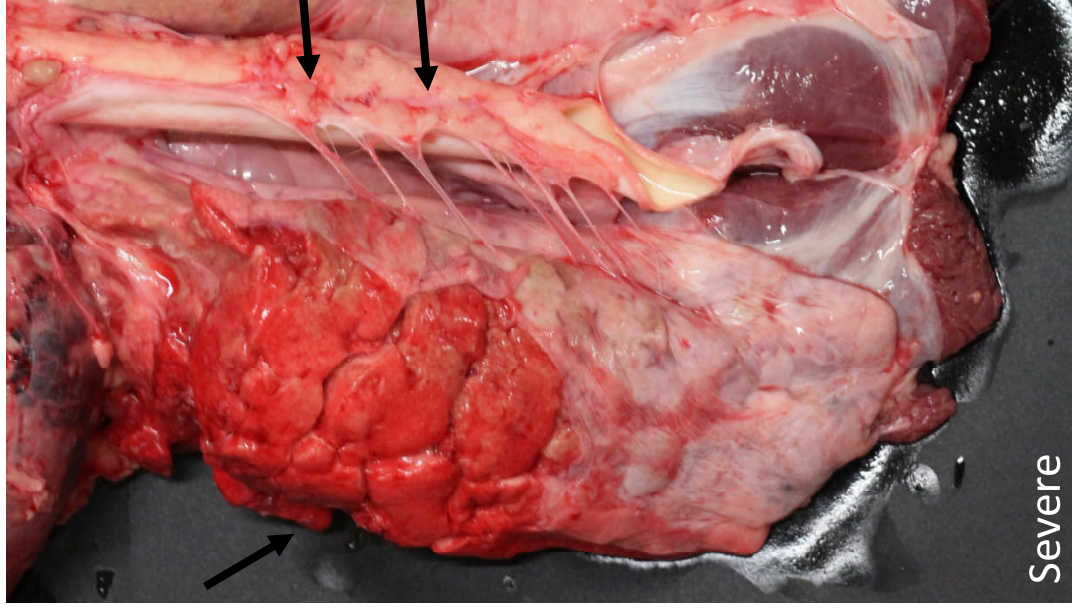




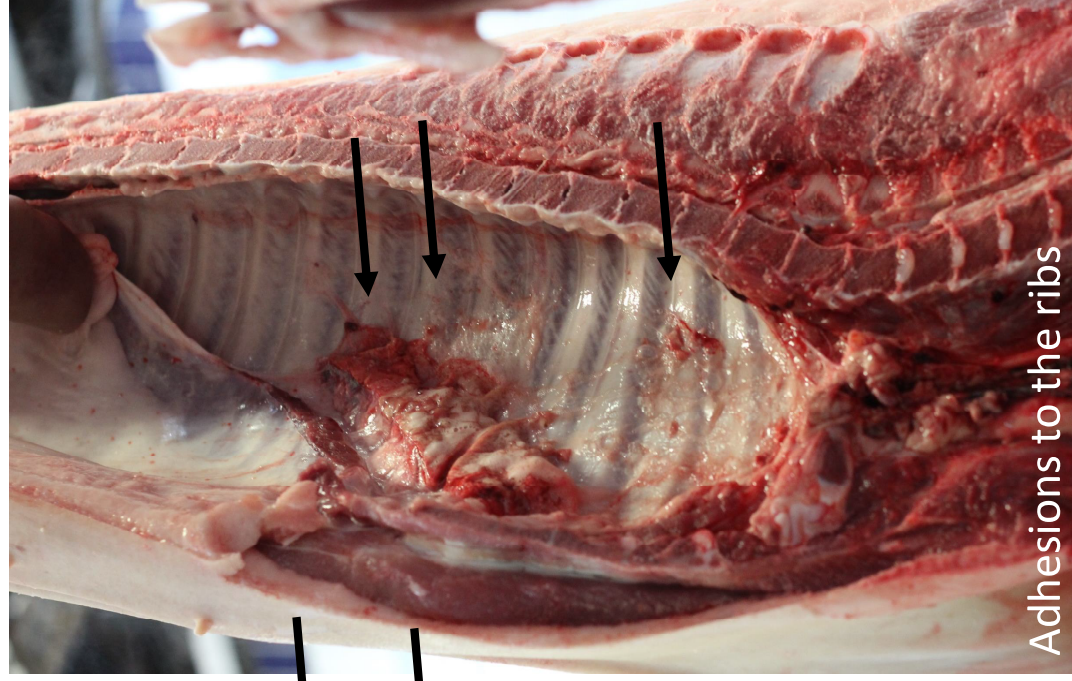
Lung, heart and liver lesions

Pleurisy

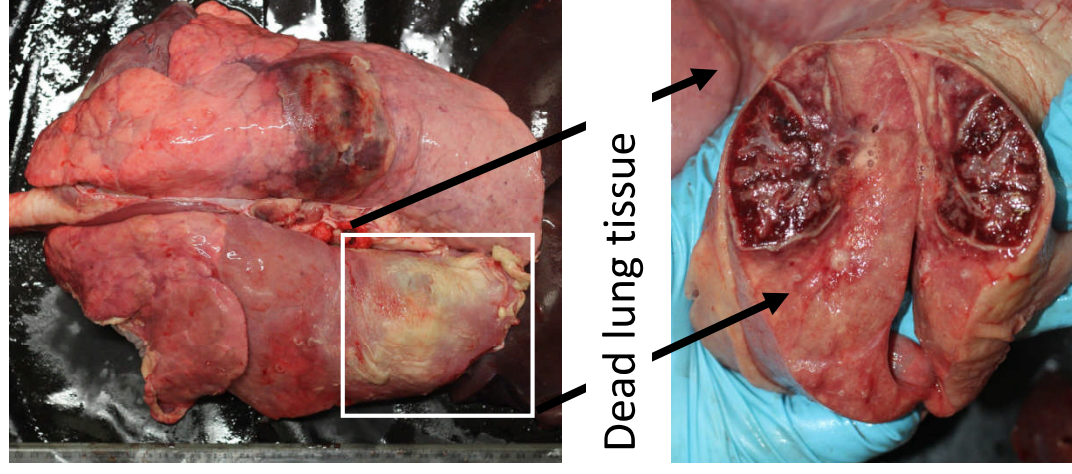
It corresponds to the inflammation of the membranes that surround the lungs.



Severe



Adhesions to the ribs



Dead lung tissue

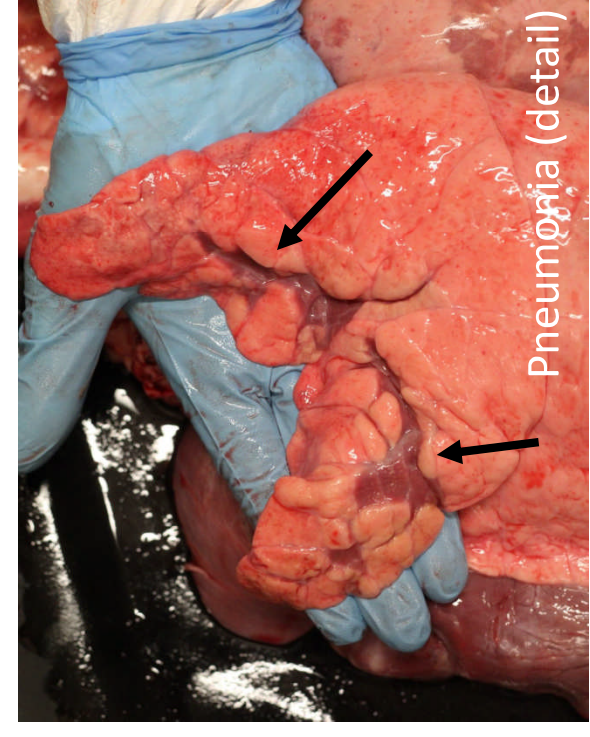
APP lesions

Pneumonia

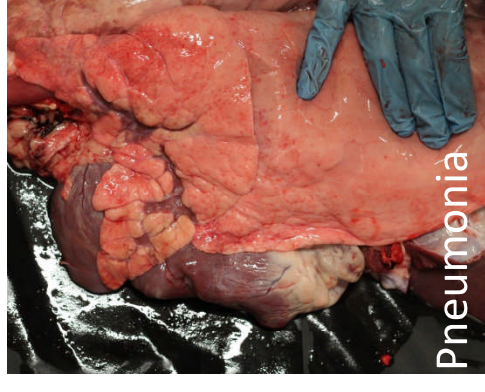
Inflammation of the lung. Lung tissue is filled with liquid (consolidation).



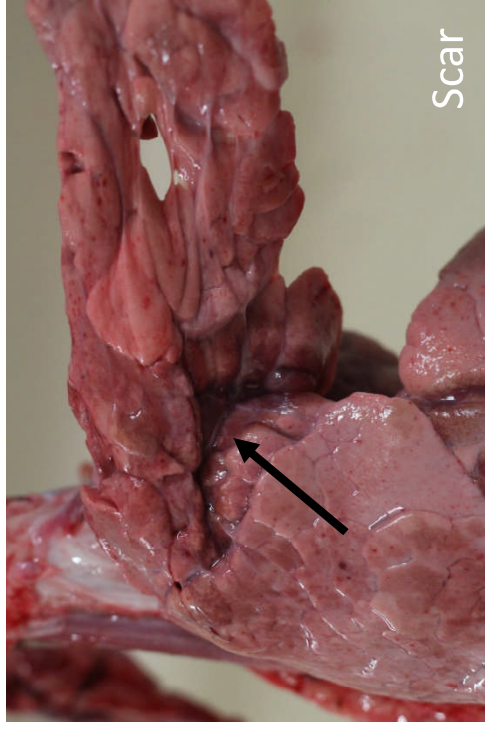
No lesions



Pneumonia (detail)



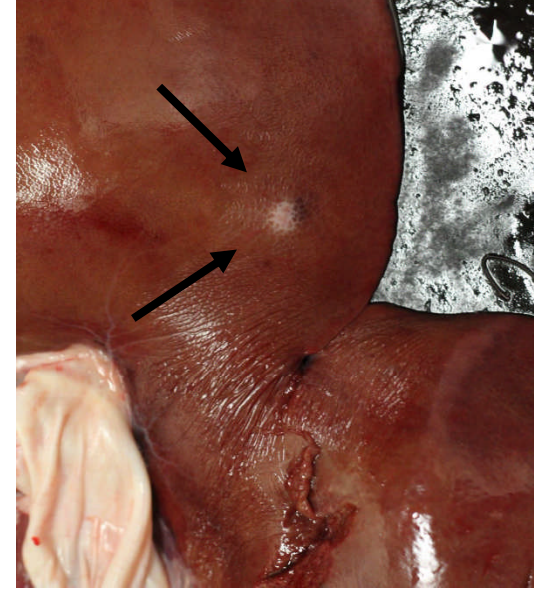
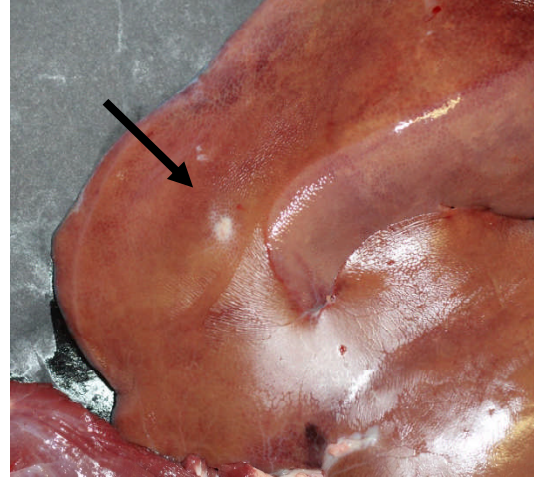
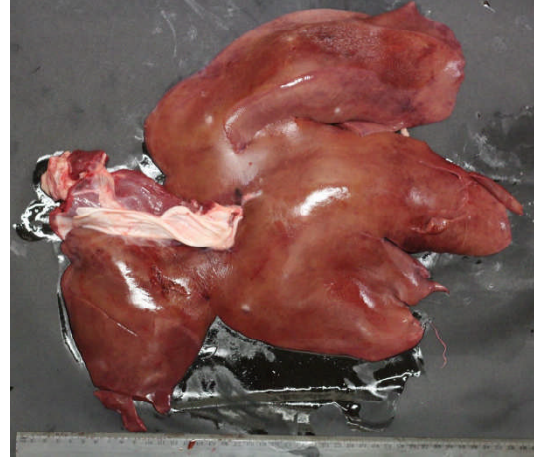
Pneumonia



Scar

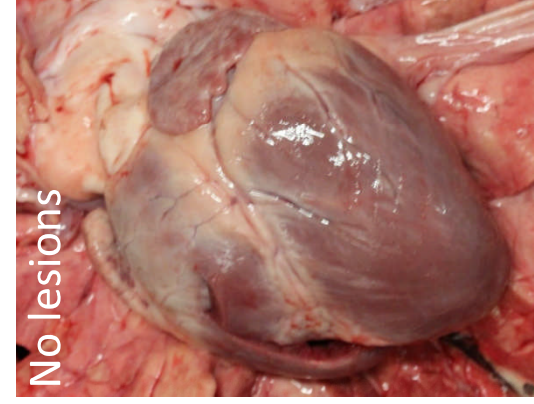
Milk Spots

Sign of the migration of parasites.

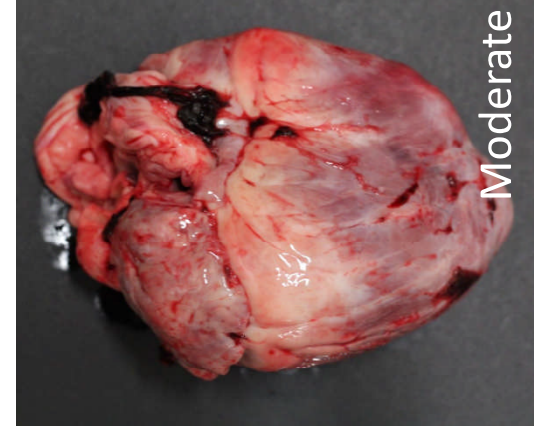


Pericarditis

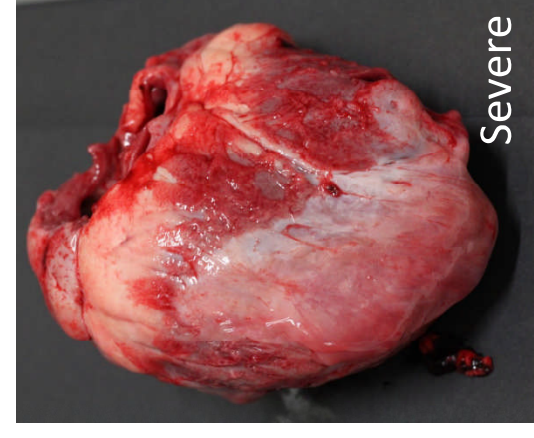
Inflammation of sac surrounding the heart.



No lesions



Moderate



Severe