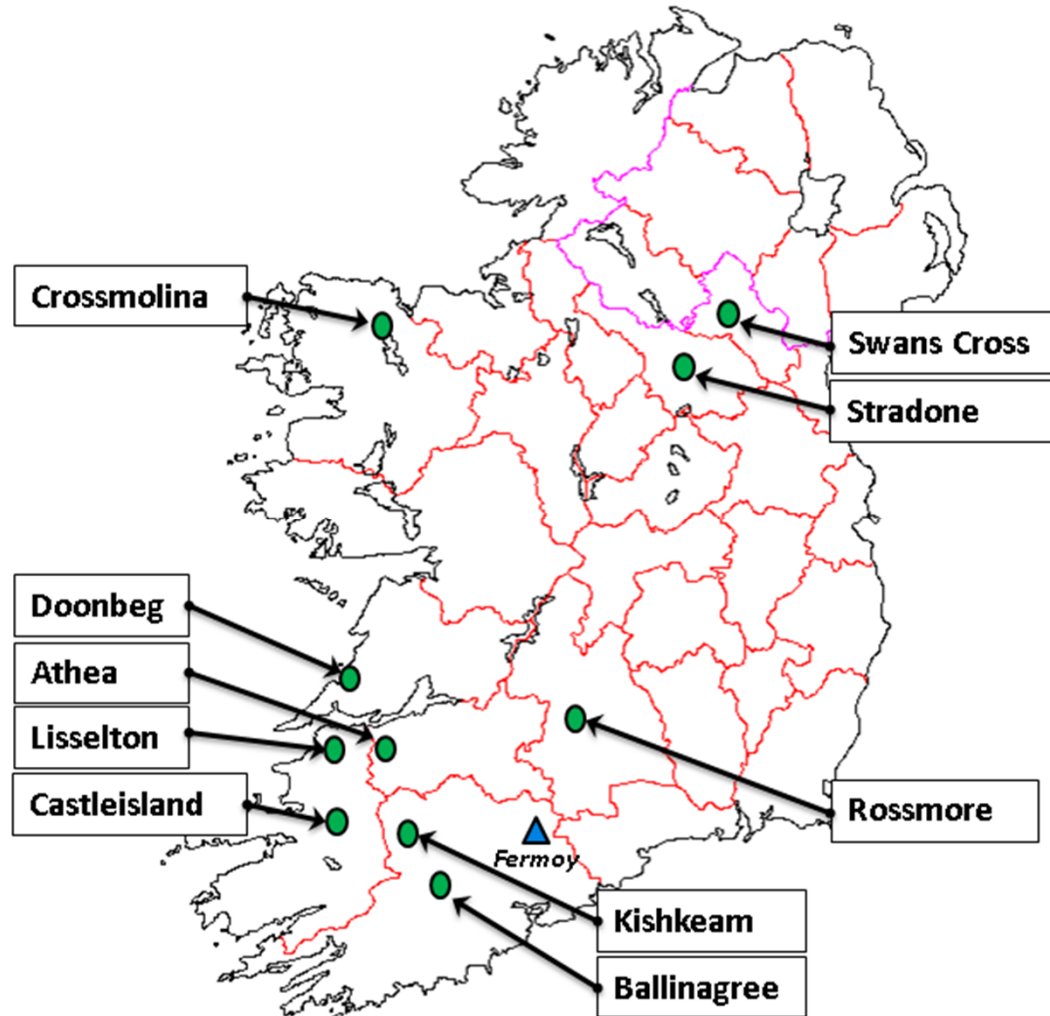




Heavy Soils Programme Review of Farm Performance 3rd February 2020 Portlaoise

Heavy Soils Programme Farms



HSP Farm Performance 2011-2019

Year	Herd size	Stocking Rate		Herd EBI		6 week calving %
		Farm	MP	Total	Fertility	
2011	78	1.7	2.12	84	47	72
2012	85	1.71	2.27	112	73	68
2013	84	1.69	2.24	134	79	76
2014	88	1.85	2.30	150	87	74
2015	95	1.81	2.45	161	89	74
2016	100	1.85	2.56	82	35	69
2017	104	2.00	2.80	89	39	75
2018	107	2.00	2.90	119	45	74
2019	106	2.00	2.80	134	53	83

HSP Comparative Farm Performance 2019

Farms	Herd size	Stocking Rate		Herd EBI		6 week calving %
		Farm	MP	Total	Fertility	
HSP Mean	106	2.0	2.8	134	53	83
HSP Range	89-120	1.66 -2.28	2.29 -3.82	101-162	36-69	62-94

HSP: Average Farm Performance

Year	Milk Solids Kg/HA	Gross Output		Total Cost		Net Margin	
		(€/Ha)	(c/Litre)	(€/Ha)	(c/Litre)	(€/Ha)	(c/Litre)
2011	850	3236	35.6	1838	20.3	1398	15.3
2012	869	3092	35.4	2143	24.7	948	10.7
2013	940	3689	40.0	2332	25.4	1357	14.6
2014	935	3725	39.0	2134	22.4	1591	16.9
2015	1091	3245	32.2	2145	21.2	1100	10.8
2016	1068	2935	28.3	1911	19.7	954	8.6
2017	1289	4508	38.4	2355	20.1	2153	18.4
2018	1404	4530	37.6	2961	23.3	1571	12.6
2019	1338	4250	36.0	2676	22.4	1574	13.3

HSP: Comparative Farm Performance 2019

Farms	Milk Solids Kg/HA	Gross Output		Total Cost		Net Margin	
		(€/Ha)	(c/Litre)	(€/Ha)	(c/Litre)	(€/Ha)	(c/Litre)
HSP Mean	1338 (726)	4250	36.0	2676	22	1574	13
HSP Range	1160-1605 (550 -876)	3219-4962	32.16- 38.37	1884 -3512	17.72 – 25.58	1014-2191	8.39- 16.44
344 Profit Monitor Mean	1097	4760	35.4	3072	22.79	1735	12.61

6 week calving %

Location	2013	2014	2015	2016	2017	2018	2019
Castleisland	69	59	62	80	82	83	84
Doonbeg	81	78	88	86	86	84	88
Athea	82	80	85	88	88	87	94
Kiskeam	87	87	84	76	83	83	85
Listowel	66	68	67	81	85	71	88
Rossmore	72	64	69	64	86	88	81
Ballingree	74	79	60	72	75	77	84
Swanscross		25	7	15	11	13	62
Stradone		45	24	58	74	83	81
Average		65	60.7	68.9	74.4	74.3	83.0

Grass Production 2019 (>22 walks)

			Date				Annual tonnage Kg DM Per/Ha		
Farm:	Annual Tonnage Tonnes /Dm Per Ha	Pre-grazing Yield Avg	First Grazing	Last Grazing	Average Number of Grazing Per Paddock	Number of Walks	Spring	Summer	Autumn
Castleisland	15.2	1574	28-Feb	24-Nov	7	39	1171	8927	4792
Ballinagree	12.8	1580	18-Feb	05-Nov	7	34	1570	7319	3765
Doonbeg	11.8	1429	26-Feb	05-Nov	6	40	872	6744	3524
Athea	14.1	1597	18-Feb	05-Nov	7	50	1613	9484	3417
Rossmore	14.1	1542	16-Feb	30-Oct	7	27	918	9497	3926
Kishkeam	12.4	1548	28-Feb	15-Nov	6	28	1427	7863	3564
Listowel	14.9	1790	22-Feb	29-Oct	6	29	1717	8484	5037
Stradone	13.4	1635	21-Feb	06-Nov	6	42	1303	8806	3876
Swanscross	11.8	1731	26-Feb	25-Nov	5	23	1078	7696	2959
Average	13.3	1603	22-Feb	09-Nov	6	35	1297	8313	3873

Grass Production best grazing paddock 2019

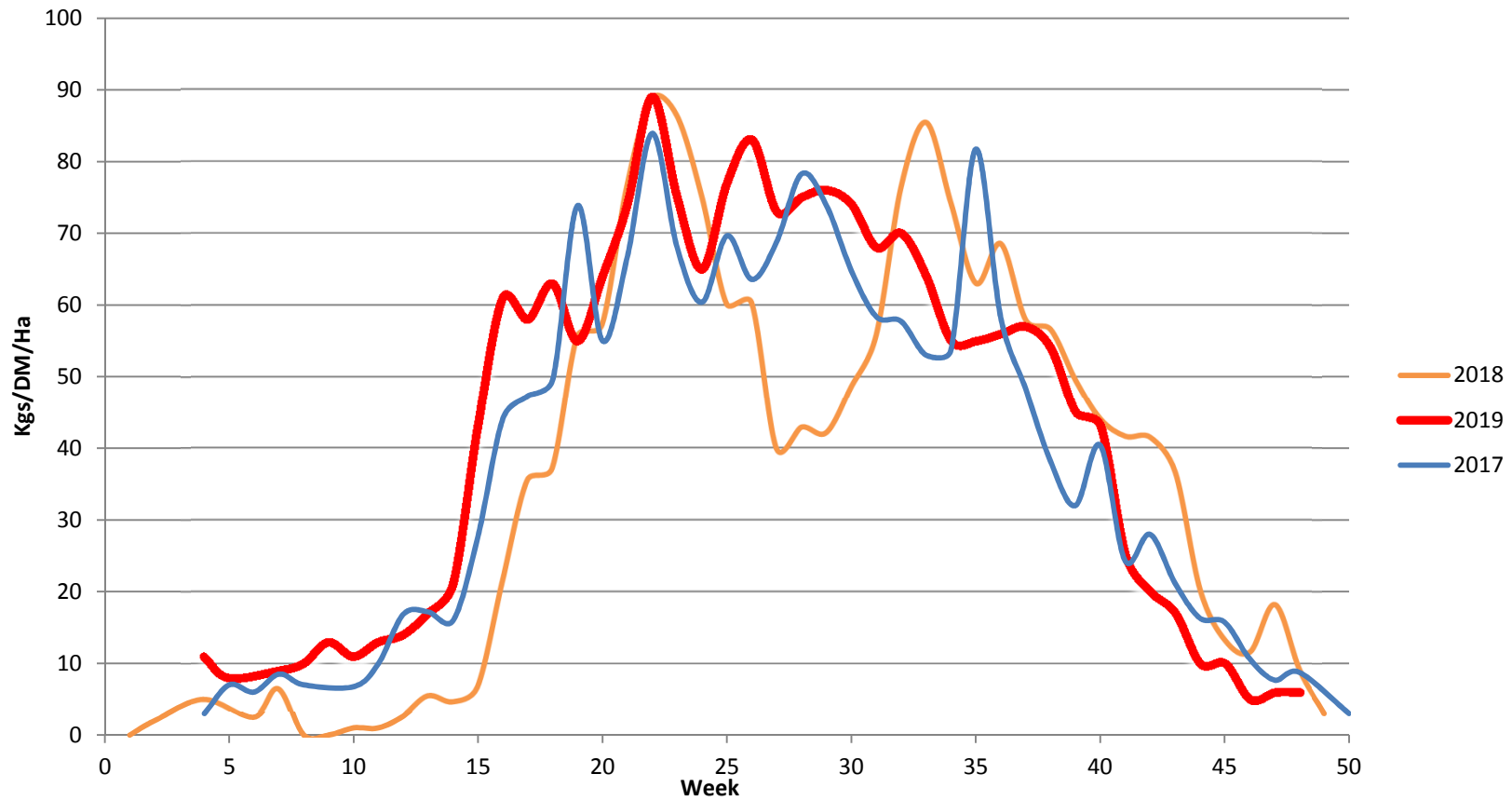
		Annual tonnage Kg DM Per/Ha			Best Paddock			Best Paddock Kg/DM PerHa		
Farm:	Annual Tonnage Tonnes /Dm Per Ha	Spring	Summer	Autumn	No.	Tonnes Dry matter/Ha	Grazing + Silage	Spring	Summer	Autumn
Castleisland	15.2	1171	8927	4792	3	19.8	13284 +6611	1411	15410	3485
Ballinagree	12.8	1570	7319	3765	5	15.6	13837 + 1800	3347	8121	4168
Doonbeg	11.8	872	6744	3524	1	16.2	15491 + 795	1566	10107	5114
Athea	14.1	1613	9484	3417	9	17.9	15383 +2564	1943	11399	4606
Rossmore	14.1	918	9497	3926	17	18.1	11606 + 6500	1119	12093	5030
Kishkeam	12.4	1427	7863	3564	2	16.1	8251+ 7900	1274	12063	3450
Listowel	14.9	1717	8484	5037	3	18	13043 + 5000	2425	11110	4758
Stradone	13.4	1303	8806	3876	45	16.1	11383 +4769	2523	9679	4210
Swanscross	11.8	1078	7696	2959	4	15.3	10985 + 4400	1712	11210	2464
Average	13	1297	8313	3873		17		1924	11244	4143

HSP Farms annual grass growth 2011 -2019

Year	Tonnes Grass Dry Matter /Ha
2011	10.6
2012	7.8
2013	10.3
2014	11.0
2015	11.3
2016	11.3
2017	11.9
2018	11.7
2019	13.3

Grass Growth

Weekly Growth



Grass Growth- HSP Vs National Average

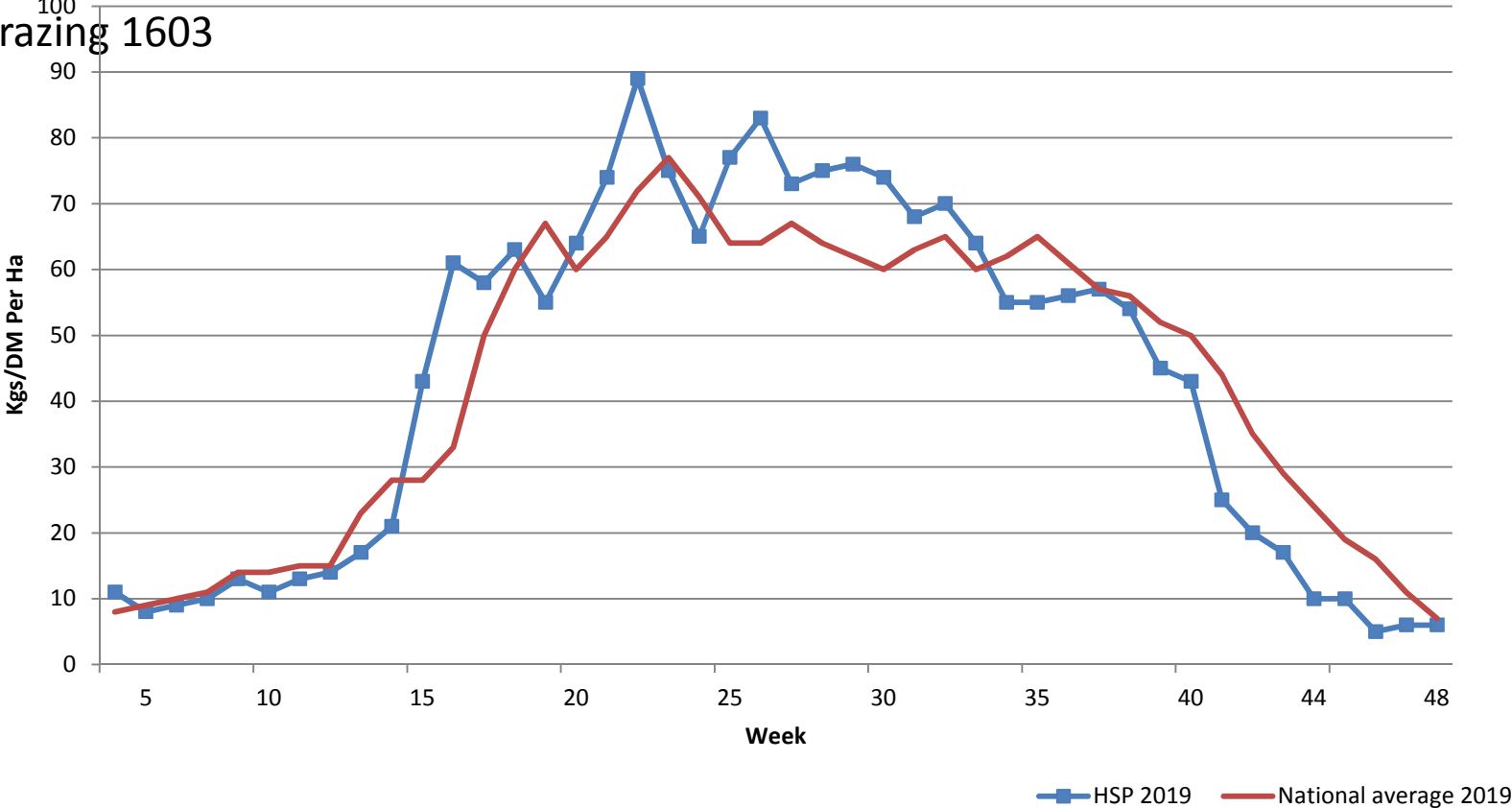
PBI Average = 13.6 T,

pregrazing 1584

HSP Average = 13.3 T

Pregrazing 1603

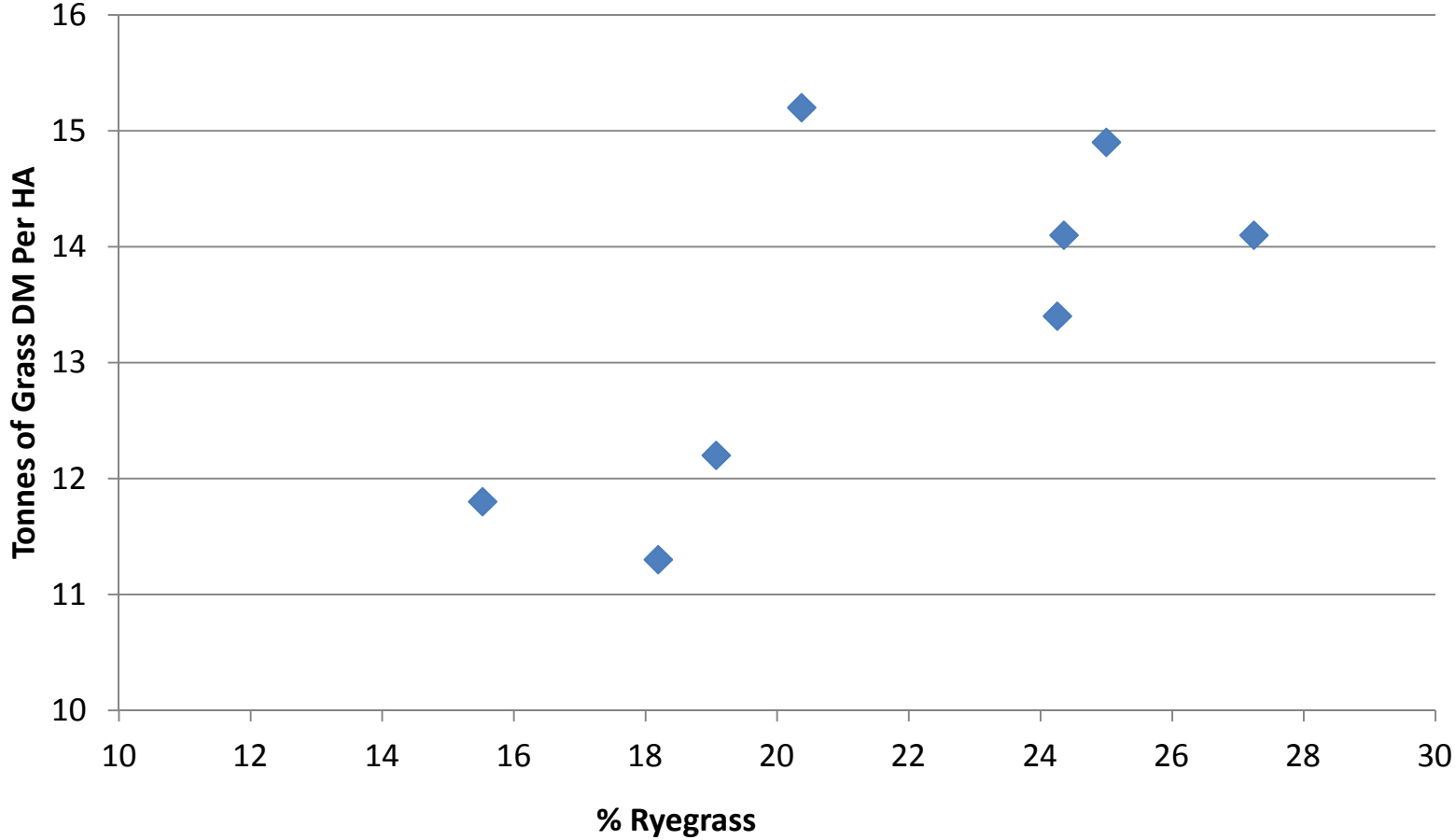
Grass Growth 2019 HSP Vs National Average



% Ryegrass Cover 2011-2019

	2011	2012	2013	2014	2015	2016	2017	2018	2019
JO'Sullivan	34	16	26	30	31	24	25	24	20
Danny B	30	22	29	28	28	24	20	26	18
J Leahy	26	19	33	37	38	30	30	36	27
SORiordan	29	17	25	27	32	25	25	24	19
Keanes	17	11	18	22	22	18	24	26	25
TJ Ryan	28	25	43	40	41	42	35	42	24
C Lehane	32	15	27	28	26	28	23	22	---
A Wood				16	20	18	16	20	8
D Brady					39	34	34	40	24
J McMahon					44	36	34	32	16
Average	28	18	29	29	32	28	27	29	20

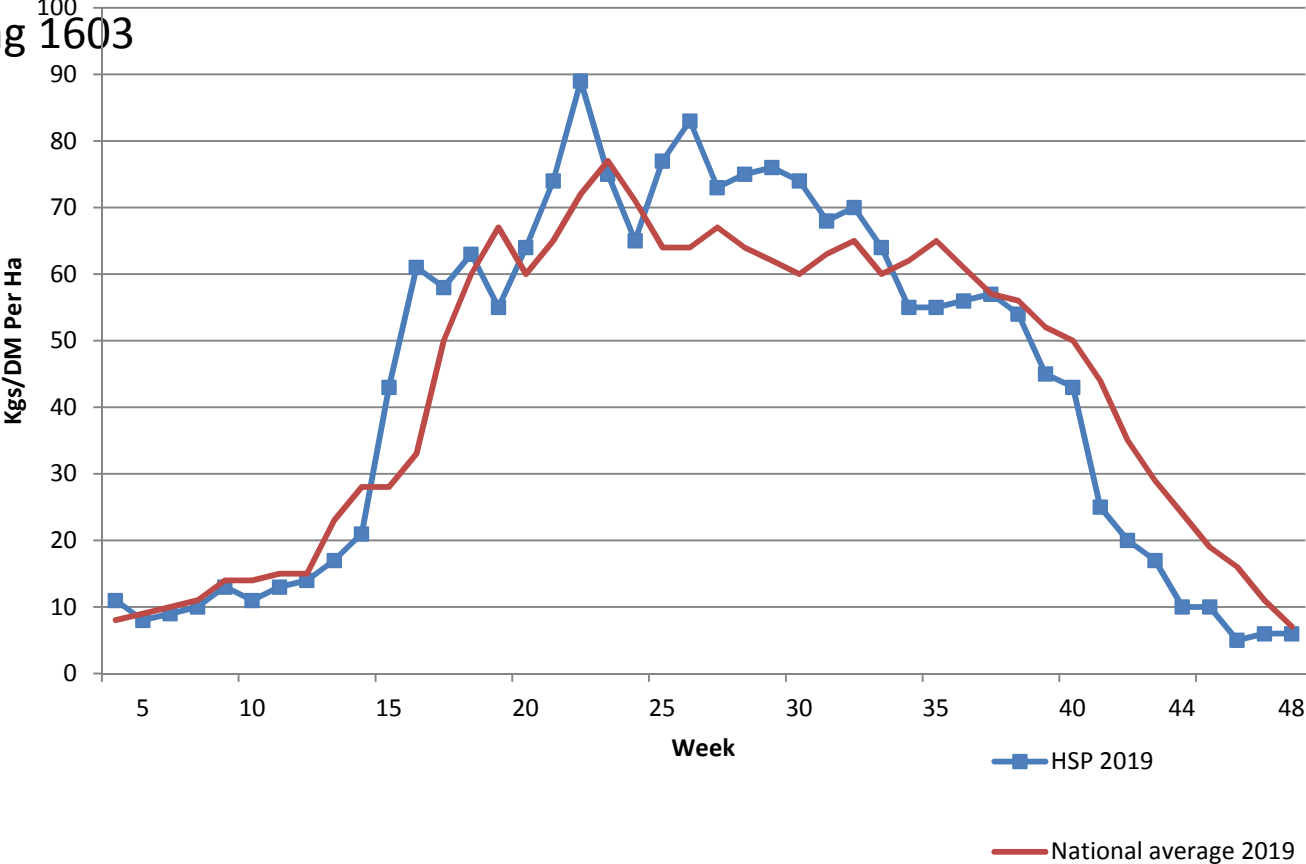
Ryegrass% Vs. Annual Tonnage



Grass Growth- HSP Vs National Average

PBI Average = 13.6 T,
pregrazing 1584
HSP Average = 13.3 T
Pregrazing 1603

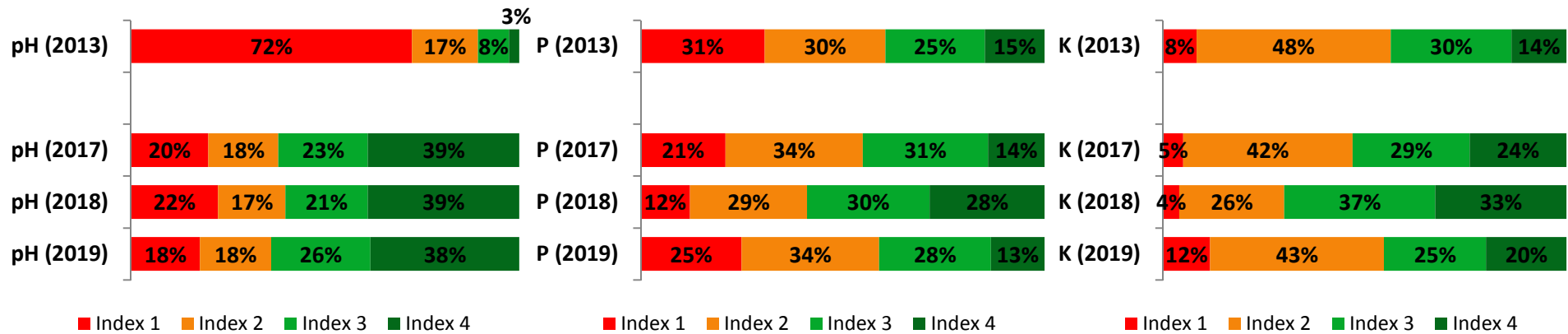
Grass Growth 2019 HSP Vs National Average



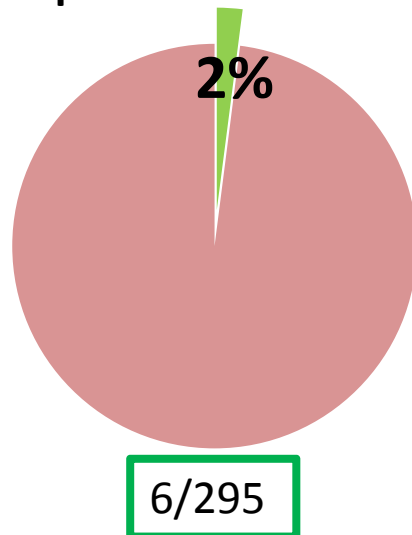
Concentrate /Fertiliser costs

	MS Kg/cow	Concentrates Kg/cow	c/l	Fert c/l
John Leahy	498	648	3.02	4.24
John O Sullivan	529	782	3.13	2.63
Danny Bermingham	541	1101	4.80	3.48
Sean O Riordan	429	685	3.63	3.64
Donal Keane	497	1327	6.99	3.28
Con Lehane	535	1100	5.05	2.73
TJ Ryan	452	900	4.50	2.39
David Brady	457	747	3.63	2.78
James Mc Mahon	418	1106	5.87	1.87
Average	484	933	4.51	3.00

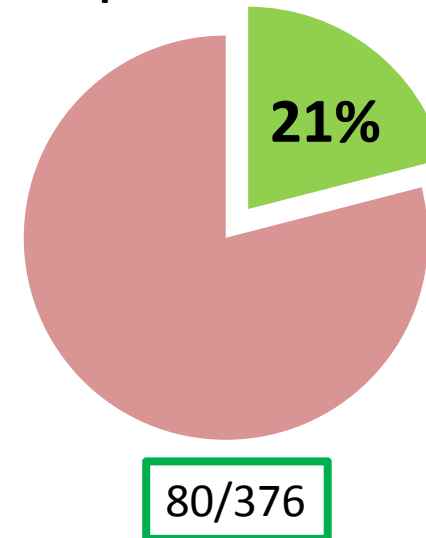
Soil Fertility: Progression



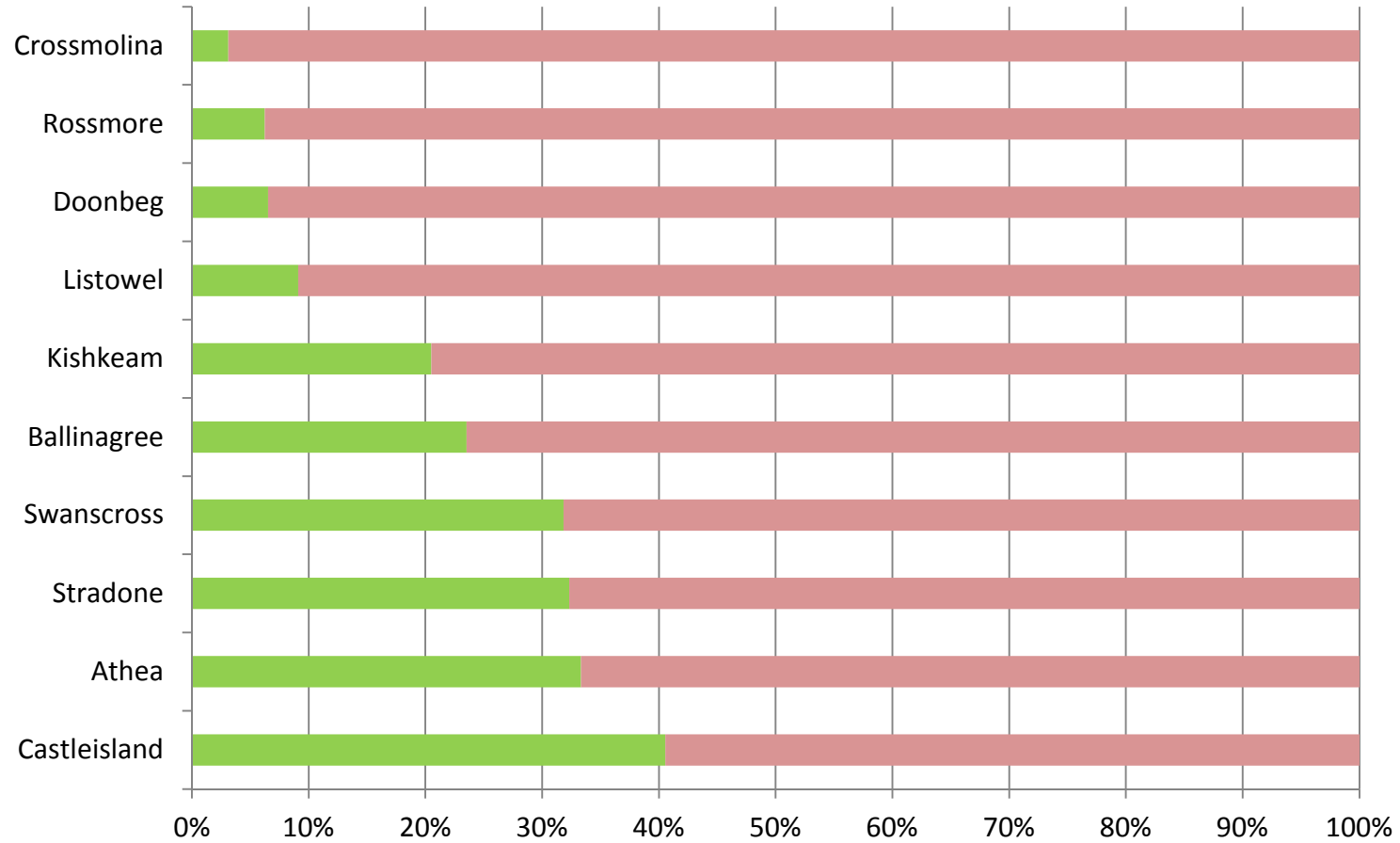
% Optimal-End of 2013



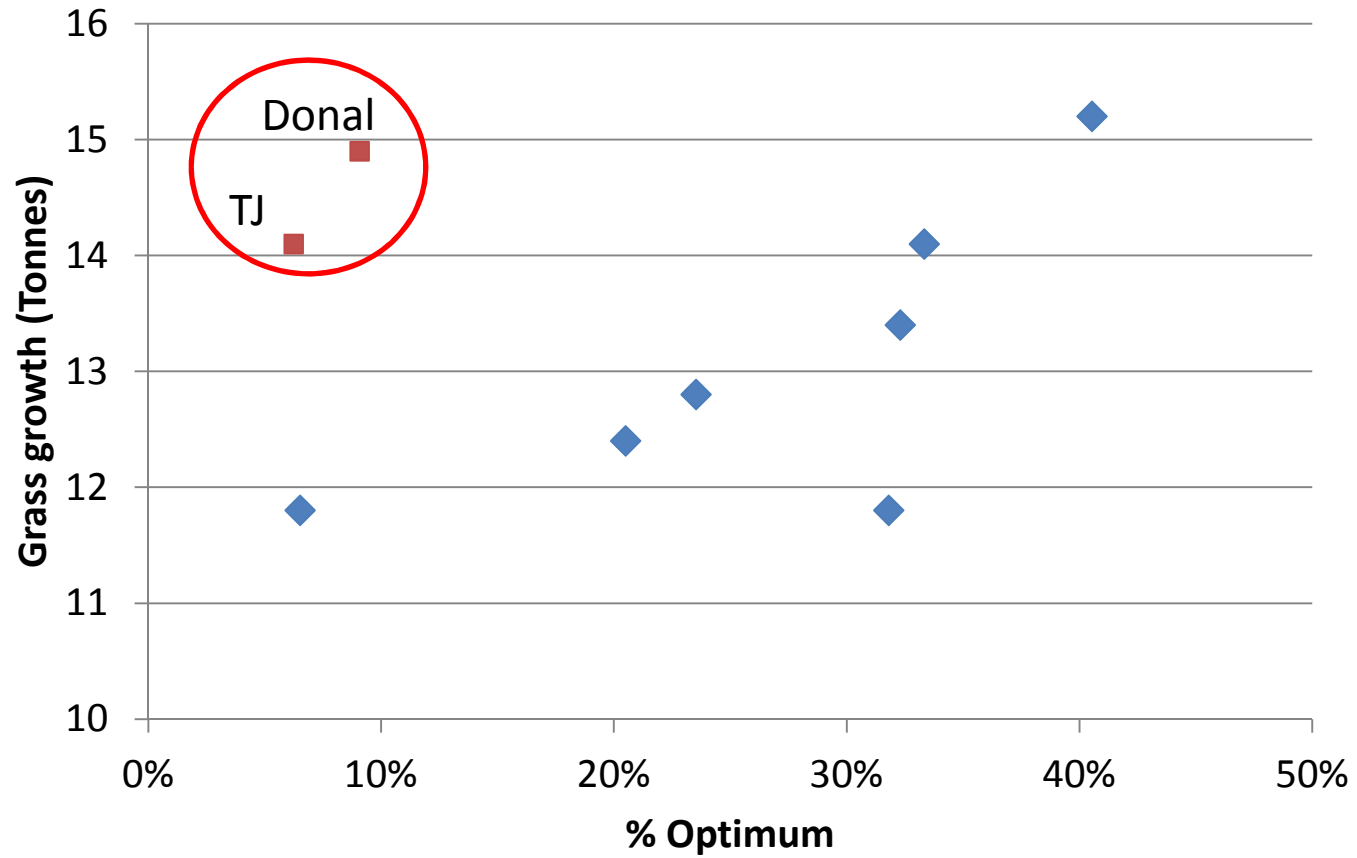
% Optimal-End of 2019



% Optimal by Farm

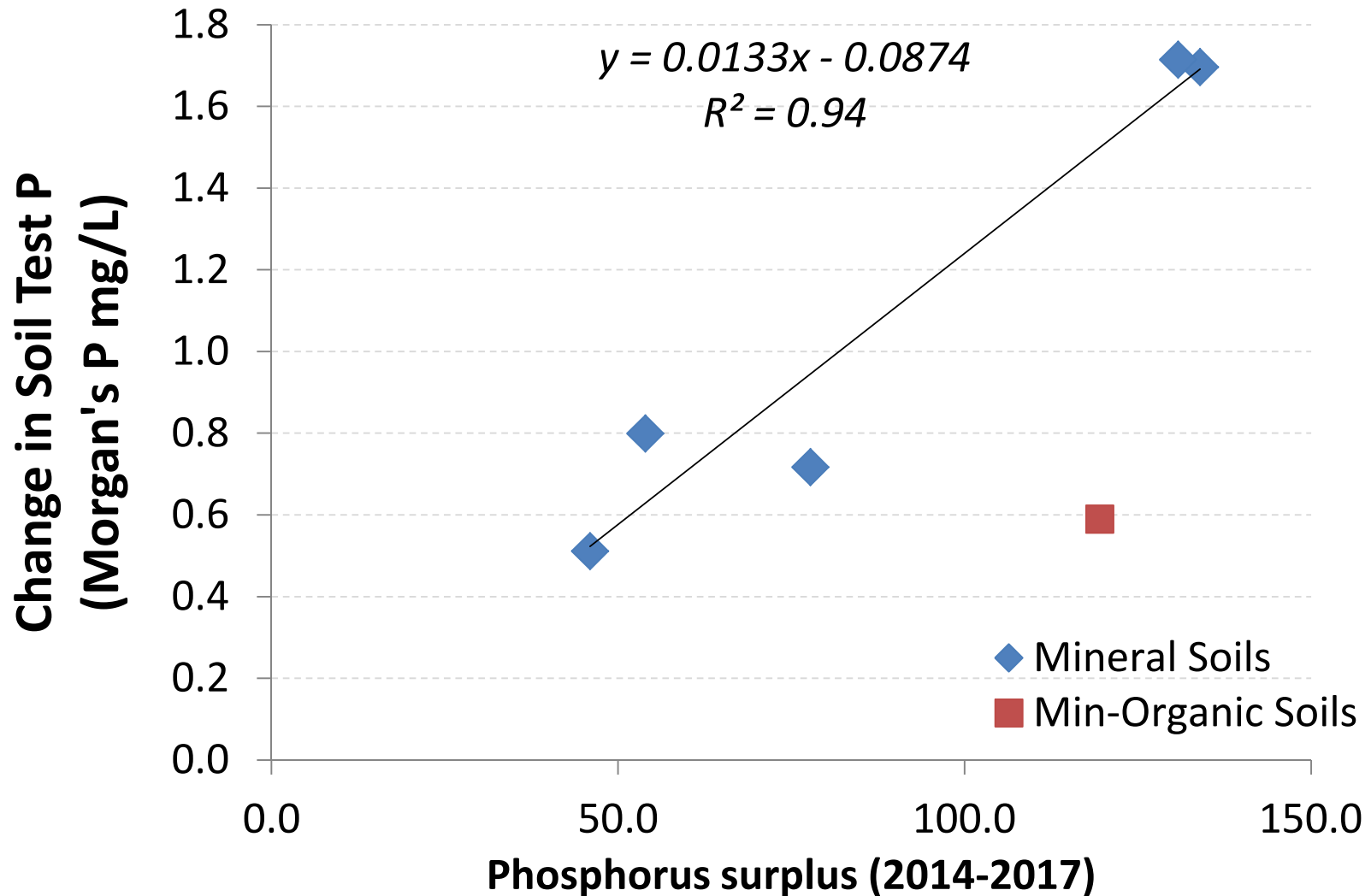


% Optimal by Farm

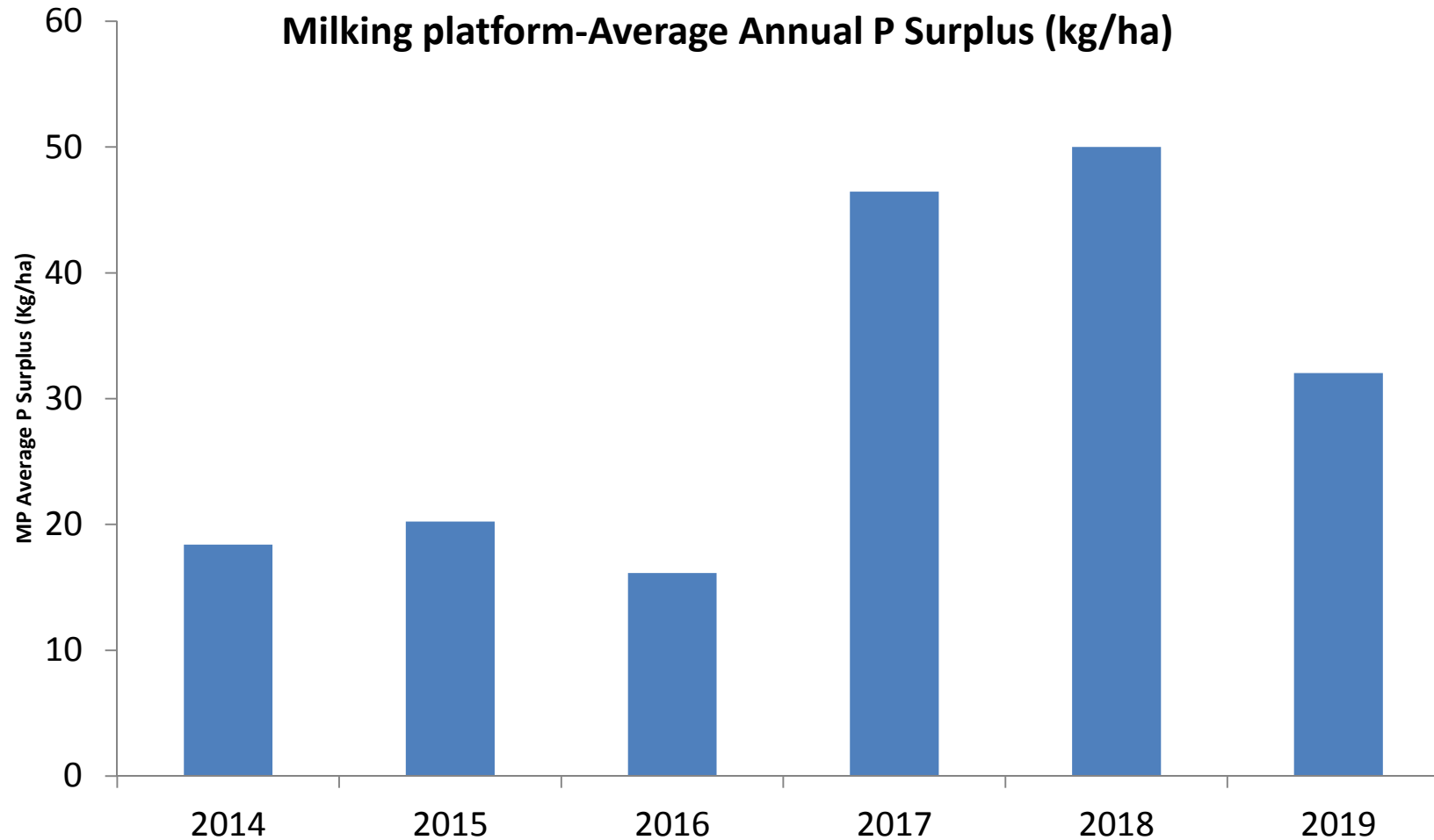


Catchment losses

How much P to move an index?



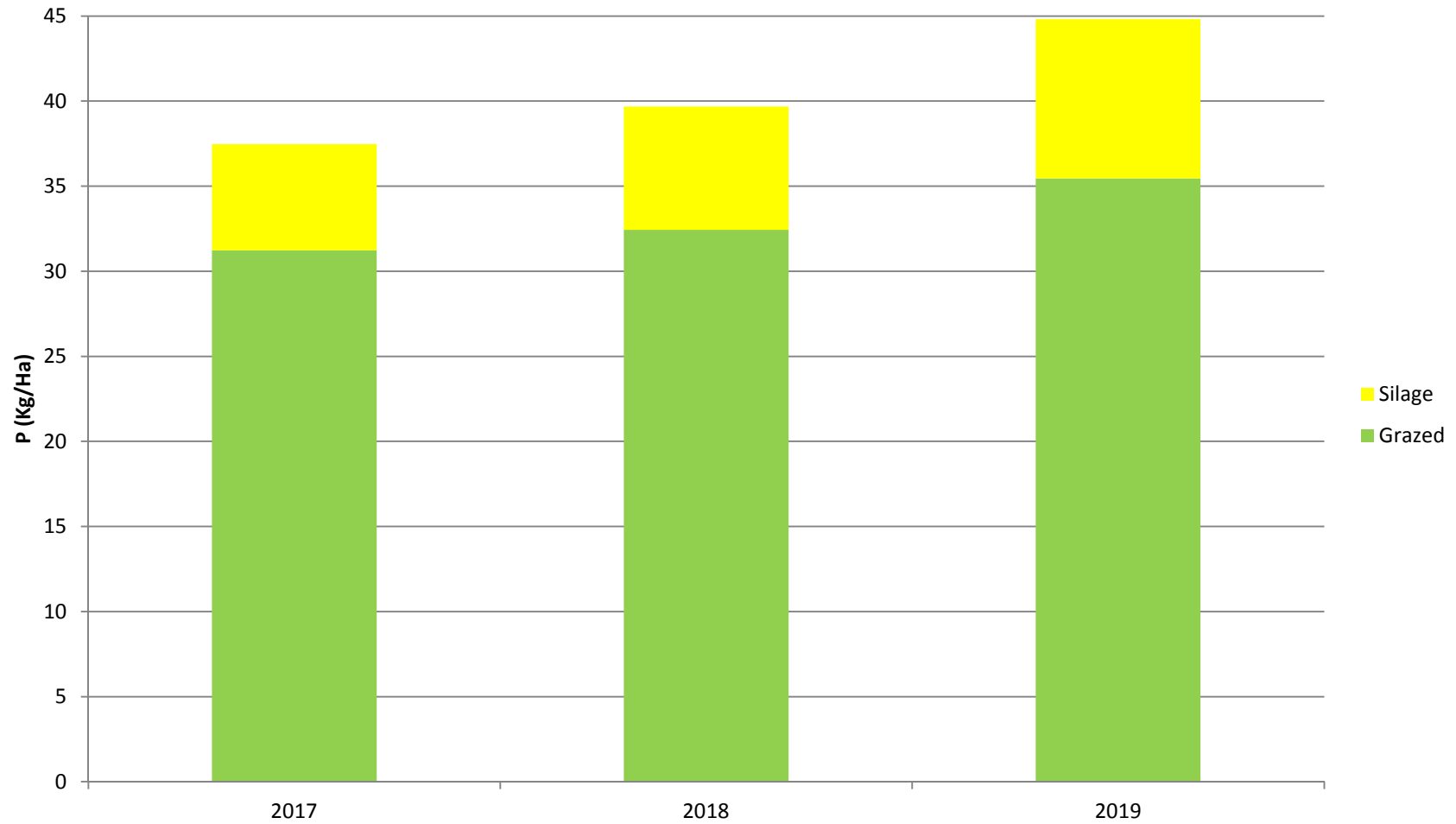
225 kg/ha surplus P to move one P Index (3 mg/L)!



Total Cumulative surplus: 185 kg/ha P

It take 70-90 kg/ha P surplus to increase soil test by 1 ppm in heavy soils

P Uptake kg/ha (gross)



Phosphorus Application

Date	3 days Rain (mm)	SMD (mm)	Total P Spread (kg)
02 Aug'	6.4	19.2	75
06 Aug'	18.6	7.8	45
22 Aug'	25.0	-10	75
02 Sept'	23.6	-10	120
05 Sept'	5.8	-7	75
07 Sept'	6.0	-7.6	101
09 Sept'	9.0	-10	60
20 Sept'	0.0	0.5	212
15 Oct'	26.4	-10	123

554 kg of P / 15% of total



GRASSLAND FARMER OF THE YEAR 2019



An Roinn Talmhaíochta,
Bia agus Mara
Department of Agriculture,
Food and the Marine



FBD
INSURANCE



Pay *John O'Sullivan*
One Thousand Euro Only

DATE *13th Dec. 2019*

euro euro euro
€ **1,000**



IRELAND
Allied Irish Banks, p.l.c.

GRASSLAND MERIT AWARD - MOST IMPROVED GRASSLAND



Grass10
GRASSLAND EXCELLENCE FOR
YOUR LIVELIHOOD

Summary

- 6 Week Calving is 83 %, Focus must remain on fertility sub index (53)
- Milk solids output sustained
- Grass production in line with PB average
- At least 30 walks required per farm!
- Ryegrass content is a concern
- Meal feeding levels in 2019 are too high
- P and K levels require attention-**% optimal**
- Application dates needs to be better targeted