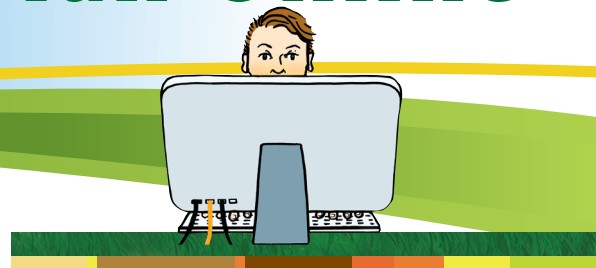


Soils, Nutrients and Fertiliser Factsheet

Nutrient Management Plan Online



Nutrient Management Plan (NMP)

NMP online, <https://nmp.teagasc.ie>, is an online system for developing nutrient management plans for environment and regulatory purposes. It is available to all agricultural professionals. Contact the Teagasc ConnectEd office to get access to the system

Soil samples are the foundations of a soil fertility plan

Step one is to soil sample the farm – a soil sample from a 4ha field will remain valid for four years and this costs ca. €1.50/ha, 60 cent/acre. A small investment considering the price of a tonne of mineral fertiliser




Step two: is getting these soil sample results into NMP Online with the help of your Teagasc advisor or other agricultural professional registered on the system

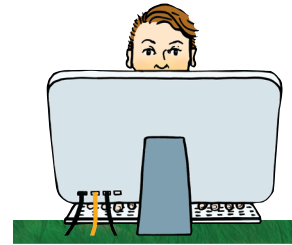
Step three: Use NMP Online to get the best return on investment from slurry and chemical fertiliser

Putting your soil fertility into NMP Online can give you the following:

- A fertiliser plan
 - Split by split
 - Tailored to the soil fertility of each field
- A lime plan for the farm
 - Targeting fields where lime will have the best impact
 - A time line outlining how you can spread the investment over several years by prioritising fields based on soil pH
- A plan to make the best use of slurry and farmyard or other organic manures
 - Targeting the fields that will benefit most from a slurry or manure application
 - Identifying the optimum time for application, bearing in mind that weather and soil conditions will determine exact dates

What your Teagasc advisor can generate for your farm:

-  A lime requirements map
-  A colour coded map outlining the P & K Indices on your farm
-  A fertiliser plan tailored to your farm enterprises and fields



Your advisor will also advise on slurry management such as when and how to have your slurry analysed.

Study your NMP Online maps before spreading slurry or FYM

Figure one (below) is an example of a map of the phosphorus (P) status of fields on this farm. Providing you have current soil sample results, NMP Online could be used to generate such a map for the fields or paddocks on your farm

Without even looking at specific P values, you can see that the fields closest to the farmyard on the left, have received more slurry than the fields that are further from the yard

The convenience of applying slurry in nearby fields can save time, but it will cost in terms of lost output in the long run

Example farm phosphorus (P) map

