

Wild Bird Cover

1

Why?

This unharvested crop is:

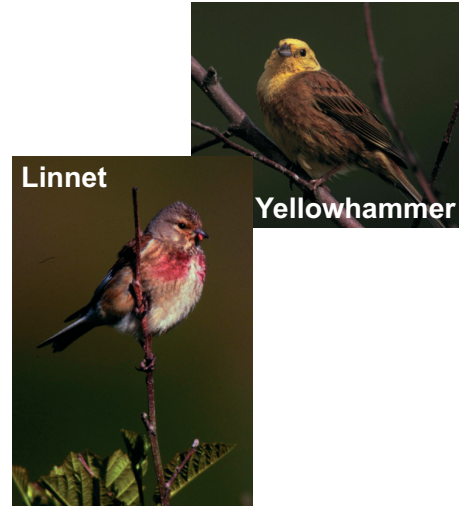
- ❖ giant bird table for seed eating birds
- ❖ habitat for tillage flora and fauna

Seed eating birds

- Declining:
 - Intensification
 - Specialisation
 - Loss of tillage in many counties

Seed eating birds

- Need a variety of seeds:
 - Small linseed or kale seeds - Linnet
 - Large cereal seeds – Yellowhammer
(likes mixed cereals)



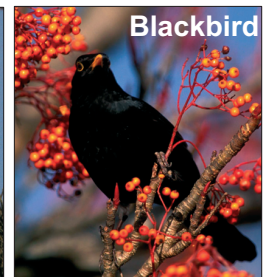
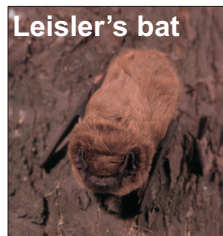
Flowers in Wild Bird Cover

- Attract pollinators and insects



Birds and Bats

- Feed on insects

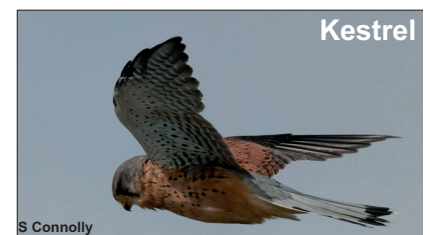
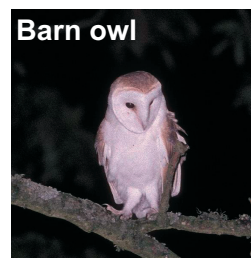


Birds

- Feed on worms

Birds of prey

- Feed on small mammals



Wild Bird Cover

- Provides cover for mammals



Wild Bird Cover

2

Oats & Linseed sown each year *Recommended*

- Grow in all soil types (including heavy, acid)
- Tolerates a low pH

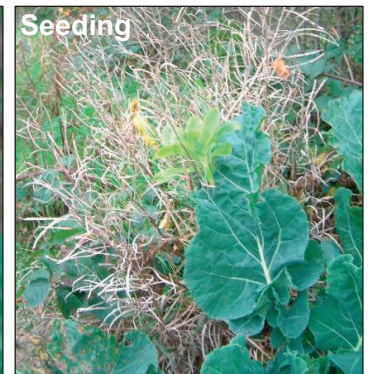


Oats and Linseed sown together

Kale

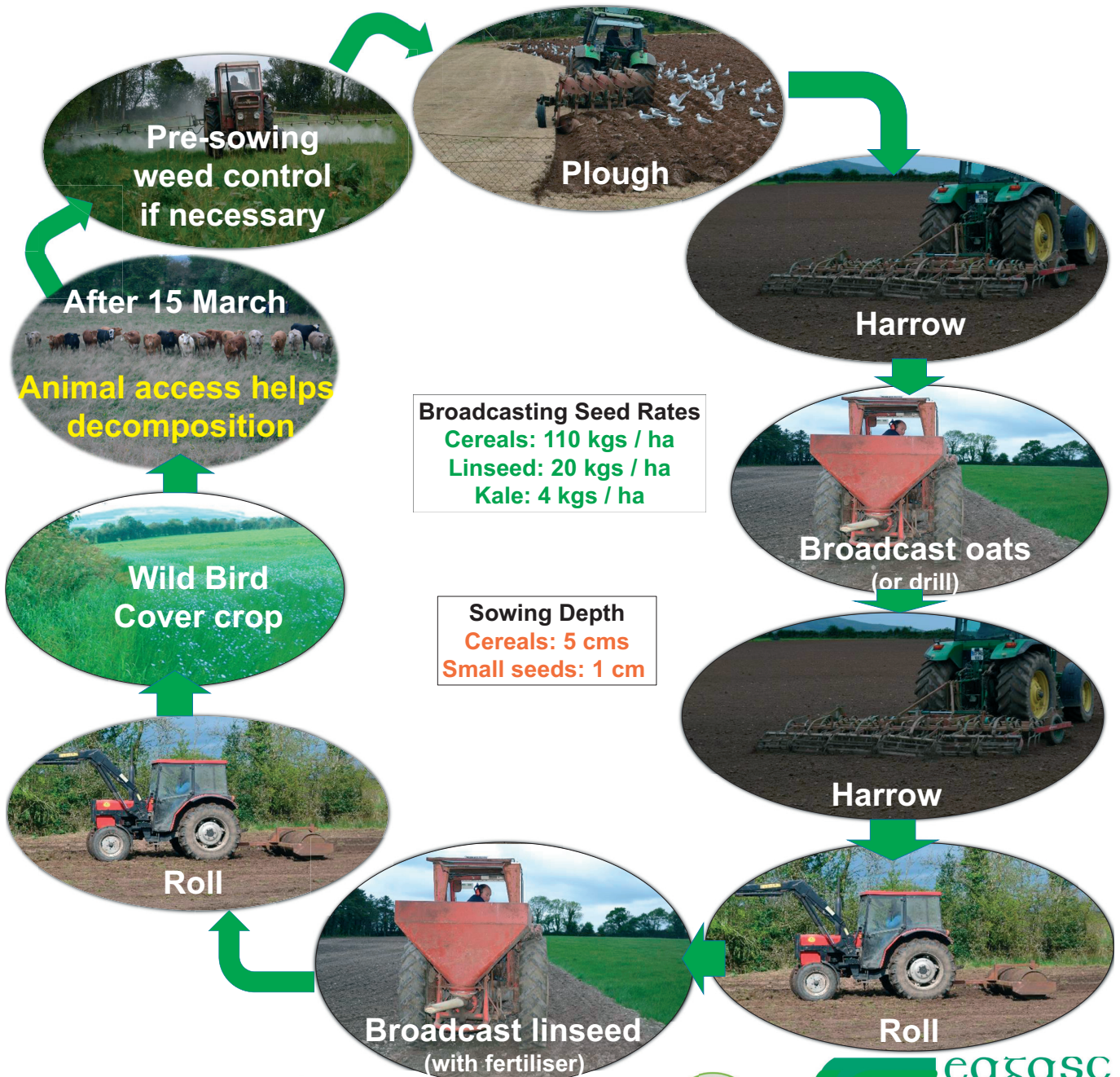
- Needs a high pH- lime important
- Fertiliser may be essential for establishment
- Club root risk (resistant varieties available)
- Biennial
 - Vegetative in year 1
 - Flowers and seeds in year 2
 - Remains in situ for 2 years
 - Sow every 2nd year
 - Establish half the plot in kale and other half cereal

Year	Half Plot	Half Plot
1	Kale Yr 1	Cereal
2	Kale Yr 2	Cereal
3	Cereal	Kale Yr 1
4	Cereal	Kale Yr 2
5	Kale Yr 1	Cereal



Sowing & Management

- Fine, firm seedbed essential
- Any cultivation method allowed provided successful crop establishment
- Pre-sowing weed control may be necessary
- Plough, harrow and roll as necessary
- Drill or broadcast - seed rate is less if drilling
- Fertilize at half prescribed rate



GLAS Requirements

- **Sow by 31 May**
 - each year for cereals,
 - every second year for kale
- **Do not apply pesticides after sowing**
- **Spot treat noxious weeds and invasive species**



- **Fence**
 - stock proof
 - fit for purpose



- **Do not harvest**
- **Retain until 15 March the following year (2 seasons for kale)**
- **Before replanting, livestock may enter from 15 March to help break down trash**



Triticale and Linseed

