

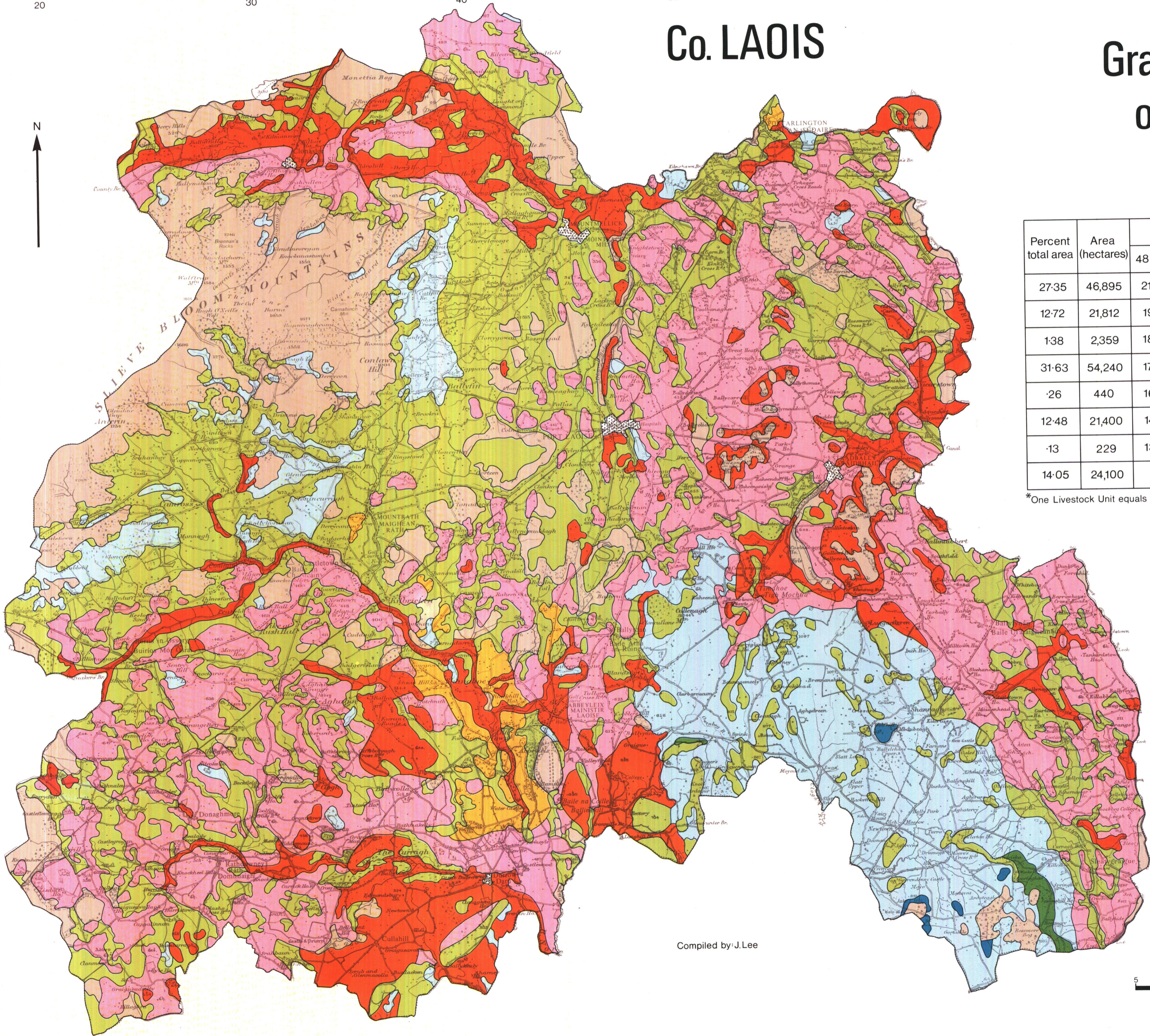
Co. LAOIS

Grazing Capacity of Soil Series

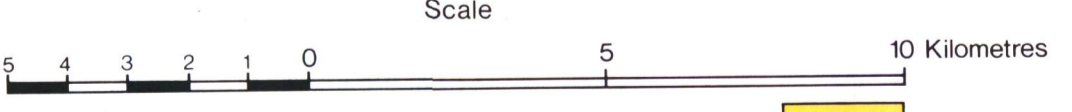
(To accompany Soil Survey Bulletin No. 41)

Percent total area	Area (hectares)	*L.U./100 ha		Grazing capacity class	L.U./100 ac	
		48kg N/ha	230kg N/ha		43 lb N/ac	206 lb N/ac
27-35	46,895	210-222	264-276	A2	85-90	107-112
12-72	21,812	197-210	252-264	B1	80-85	102-107
1-38	2,359	185-197	227-252	B2	75-80	92-102
31-63	54,240	173-185	202-227	C1	70-75	82-92
·26	440	160-173	188-202	C2	65-70	72-82
12-48	21,400	148-160	—	D1	60-65	—
·13	229	135-148	—	D2	55-60	—
14-05	24,100	<135	—	E	<55	—

*One Livestock Unit equals one 10·5 cwt. cow or equivalent (533·4 kg)



- Soil Boundaries
- Altitudes
- Roads
- Rivers
- Towns
- Major Lakes



Compiled by J. Lee

NATIONAL SOIL SURVEY OF IRELAND