

NATIONAL SOIL SURVEY OF IRELAND

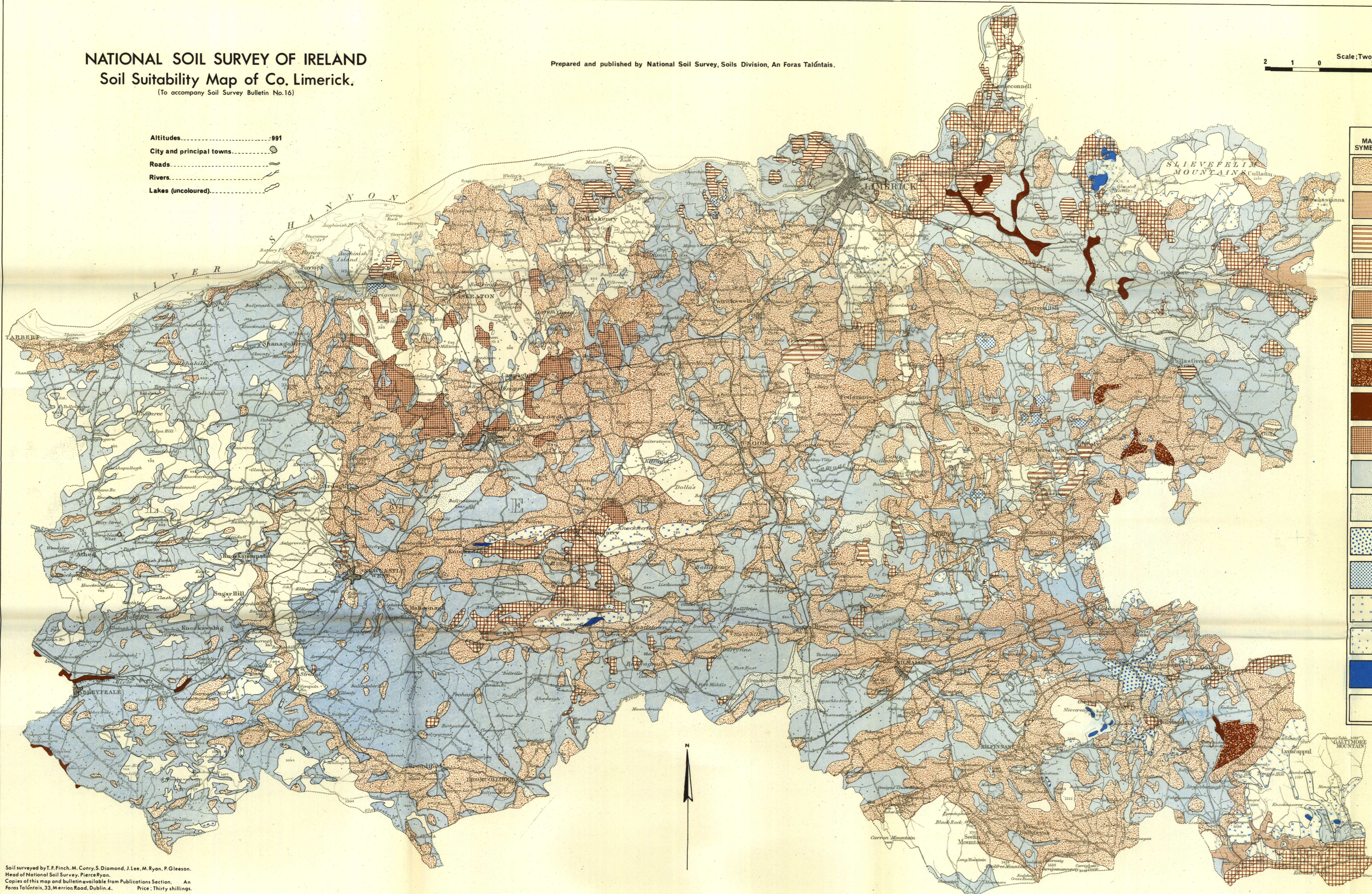
Soil Suitability Map of Co. Limerick.

(To accompany Soil Survey Bulletin No.16)

Prepared and published by National Soil Survey, Soils Division, An Foras Talúntais.

Scale: Two miles to One Inch. (1:126,720). 2 1 0 2 4 6 8 Miles

Altitudes.....991
 City and principal towns.....
 Roads.....
 Rivers.....
 Lakes (uncoloured).....



MAP SYMBOL	SUITABILITY CLASS*	USE RANGE	TYPE OF LIMITATION**	PER CENT OF TOTAL AREA
[Symbol: Fine grid]	Mainly suitable for tillage crops, pasture or forestry.	Wide use range.	No serious limitations.	34.77
[Symbol: Horizontal lines]	Mainly of moderate suitability for tillage crops, pasture or forestry.	Somewhat limited use range.	Somewhat high elevation and steep slopes.	0.61
[Symbol: Vertical lines]			Adverse soil physical conditions.	0.37
[Symbol: Diagonal lines (top-left to bottom-right)]			Coarse texture; liable to periodic drought.	3.27
[Symbol: Diagonal lines (top-right to bottom-left)]			Weak structure.	0.07
[Symbol: Dotted]	Mainly of moderate to poor suitability for tillage crops; mainly of moderate suitability for pasture or forestry.	Somewhat limited use range.	Drainage imperfect to poor; moderate to weak structure.	0.30
[Symbol: Cross-hatch]			Hazard of periodic flooding.	0.29
[Symbol: Stippled]			Somewhat shallow soils; occasional bedrock outcrops; liable to periodic drought.	1.07
[Symbol: Light blue]	Mainly of poor suitability for tillage crops; mainly of moderate suitability for pasture or forestry.	Limited use range.	Drainage poor to very poor; adverse soil physical conditions.	39.12
[Symbol: Yellow]			Drainage very poor; hazard of periodic flooding.	2.19
[Symbol: Blue dots]			Serious drainage problem; high water-table.	0.23
[Symbol: Blue squares]			Shallow soils; frequent bedrock outcrops.	0.23
[Symbol: Blue triangles]	Mainly unsuitable for tillage crops or intensive grazing; mainly of moderate and poor suitability for extensive grazing or forestry.	Very limited use range.	Shallow soils, pan formation, steep slopes; high altitudes.	2.47
[Symbol: Blue circles]			Very serious drainage problem, high water-table unless drained.	0.83
[Symbol: Dark blue]	Unsuitable for cultivation or intensive grazing; mainly unsuitable for forestry; mainly of poor suitability for extensive grazing.	Extremely limited use range.	Very shallow soils, frequent rock outcrops, steep slopes, high altitudes.	0.08
[Symbol: White]	Unclassified (Variable suitability).	Variable use range.	Variable limitations from slight to serious.	13.37

* In making this classification a high standard of management practices (including lime and fertiliser amendments as required) is assumed.
 ** Limitations noted here refer mainly to physical soil problems under existing conditions. Inadequate natural nutrient status is a major limitation in most of the soils and many need liming.

Soil surveyed by T. F. Finch, M. Conry, S. Diamond, J. Lee, M. Ryan, P. Gleeson.
 Head of National Soil Survey, Pierce Ryan.
 Copies of this map and bulletin available from Publications Section, An Foras Talúntais, 33, Merrion Road, Dublin 4. Price: Thirty shillings.