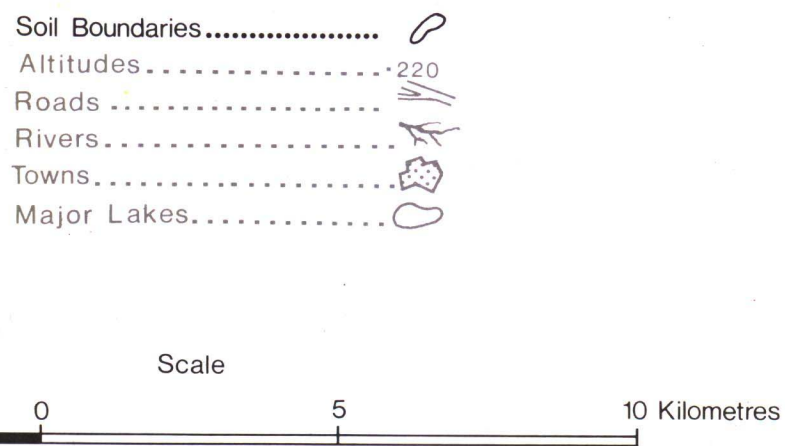
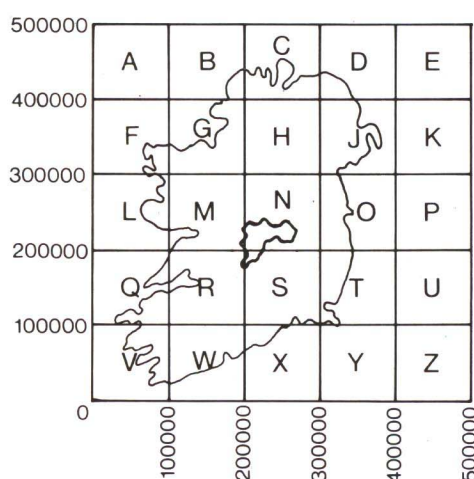
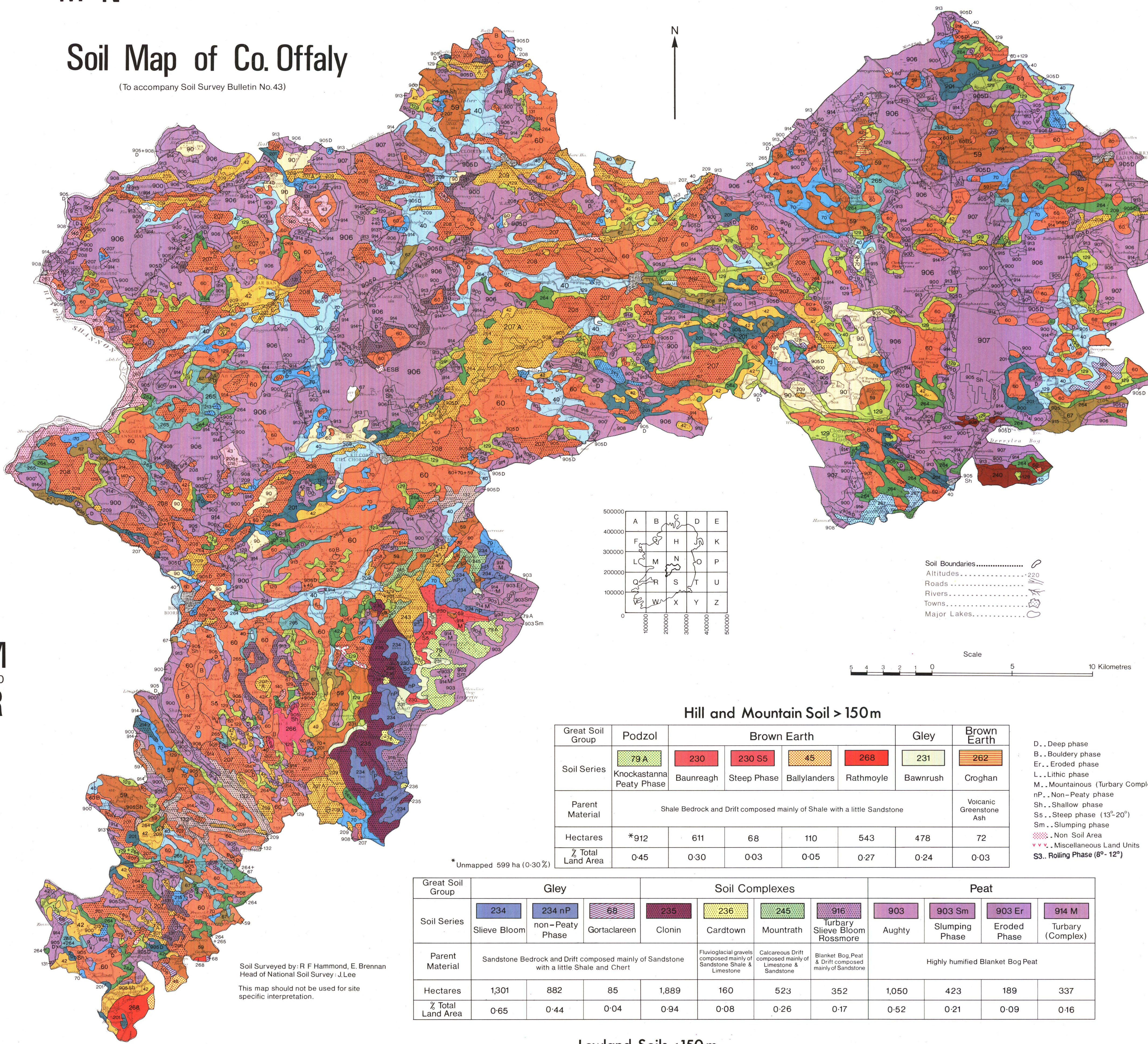


M²⁰⁰N

Soil Map of Co. Offaly

(To accompany Soil Survey Bulletin No.43)



Hill and Mountain Soil > 150m

Great Soil Group	Podzol	Brown Earth			Gley	Brown Earth	
Soil Series	79 A	230	230 S5	45	268	231	262
Parent Material	Shale Bedrock and Drift composed mainly of Shale with a little Sandstone					Volcanic Greenstone Ash	
Hectares	*912	611	68	110	543	478	72
% Total Land Area	0.45	0.30	0.03	0.05	0.27	0.24	0.03

- D. . Deep phase
- B. . Boulder phase
- Er. . Eroded phase
- L. . Lithic phase
- M. . Mountainous (Turbary Complex)
- nP. . Non-Peaty phase
- Sh. . Shallow phase
- Ss. . Steep phase (13°-20°)
- Sm. . Slumping phase
- Non Soil Area
- Miscellaneous Land Units
- ss. . Rolling Phase (8°-12°)

* Unmapped 599 ha (0.30%)

Great Soil Group	Gley		Soil Complexes			Peat					
Soil Series	234	234 nP	68	235	236	245	916	903	903 Sm	903 Er	914 M
Parent Material	Sandstone Bedrock and Drift composed mainly of Sandstone with a little Shale and Chert			Fluvioglacial gravels composed mainly of Sandstone Shale & Limestone	Calcareous Drift composed mainly of Limestone & Sandstone	Blanket Bog Peat & Drift composed mainly of Sandstone					
Hectares	1,301	882	85	1,889	160	523	352	1,050	423	189	337
% Total Land Area	0.65	0.44	0.04	0.94	0.08	0.26	0.17	0.52	0.21	0.09	0.16

Lowland Soils < 150m

Great Soil Group	Rendzina	Brown Earth		Grey Brown Podzolic						Podzol-Grey Brown Podzolic	Gley					Regosol		
Soil Series	140	42	43	59	60	60 B	60 L	90	266	240	70	128	129	201	264	265	67	40
Parent Material	Limestone Bedrock	Calcareous Drift composed mainly of Limestone with some Sandstone and Shale									Calcareous Fluvioglacial Sands	Calcareous Drift composed mainly of Limestone with some Sandstone and Shale					Lake Marl over Alluvium	River Alluvium
Hectares	274	4,061	461	10,082	29,520	707	447	3,126	397	566	3,720	278	8,405	4,350	4,304	3,172	2,161	10,692
% Total Land Area	0.13	2.00	0.23	5.06	15.05	0.35	0.22	1.57	0.19	0.28	1.86	0.13	4.22	2.18	2.16	1.59	1.08	5.37

Soil Series	Soil Complexes												Peat					Peat Complex						
	207	207 A	208	209	243	213	214	215	131	132	263	267	900	915	913	905 D	905 Sh	908	906	907				
Parent Material	Calcareous Drift of varied physical composition derived from predominantly Carboniferous Limestone												Fen Peats, Calcareous Drift and Alluvium					Raised Bog Peats of variable humification composed predominantly of Sphagnum Mosses			Humified Fen Peats composed of variable amounts of Sedges, Mosses, Reed and Wood remains		Raised Bog and Fen	
Hectares	10,903	3,282	9,147	3,732	1,014	258	67	193	1,847	1,161	961	448	8,257	233	3,625	15,164	1,670	1,639	21,217	5,586				
% Total Land Area	5.47	1.64	4.59	1.87	0.50	0.12	0.03	0.09	0.92	0.58	0.48	0.22	4.14	0.11	1.82	7.81	0.83	0.82	10.86	2.80				

Unmapped Areas 599ha 0.3%

R²⁰⁰S