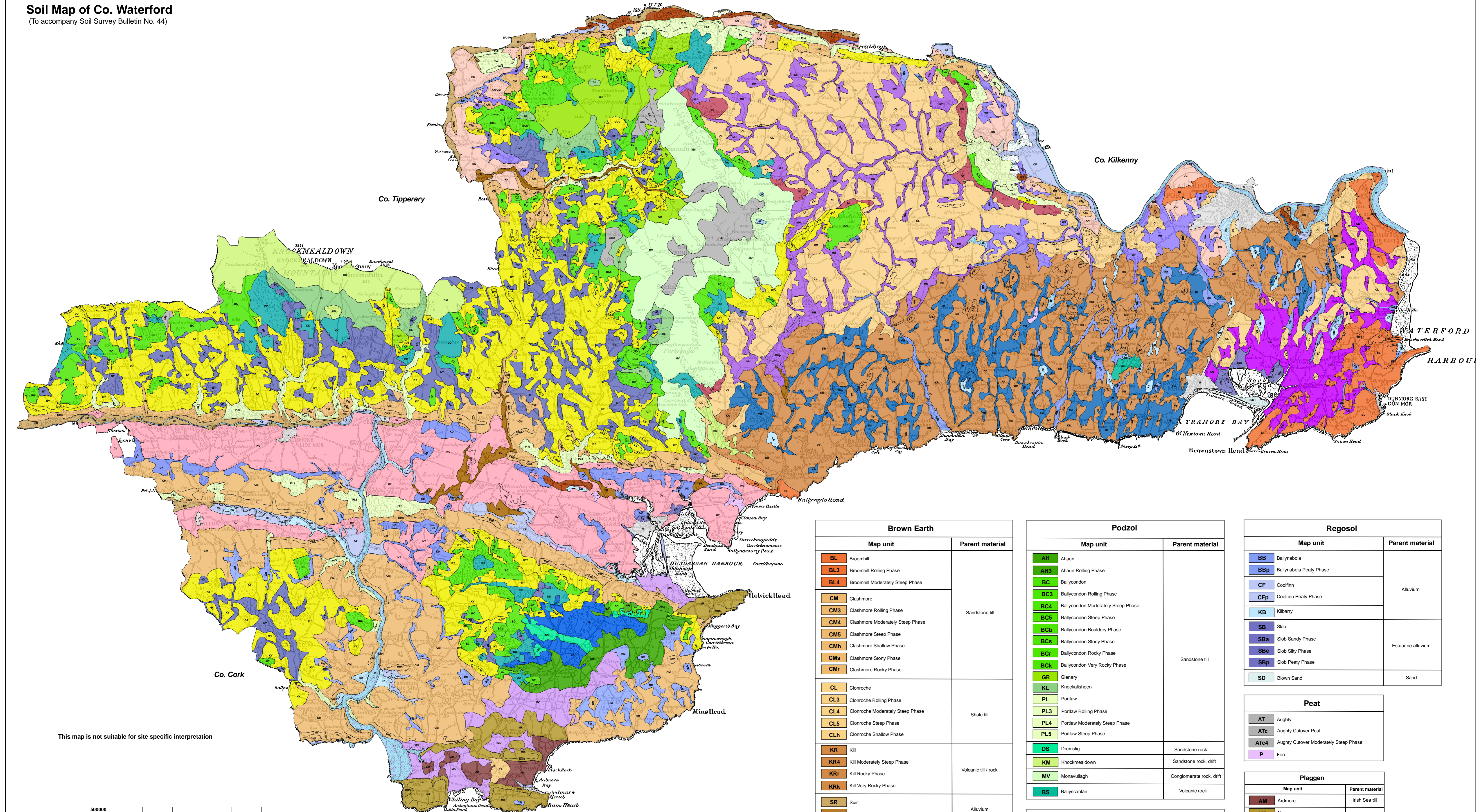
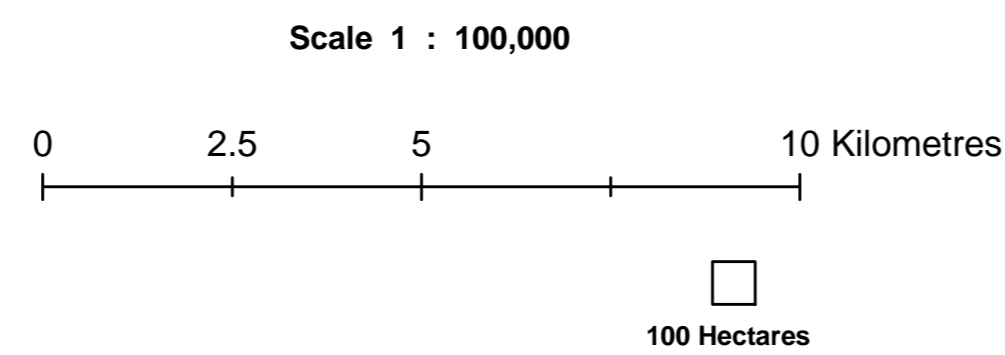
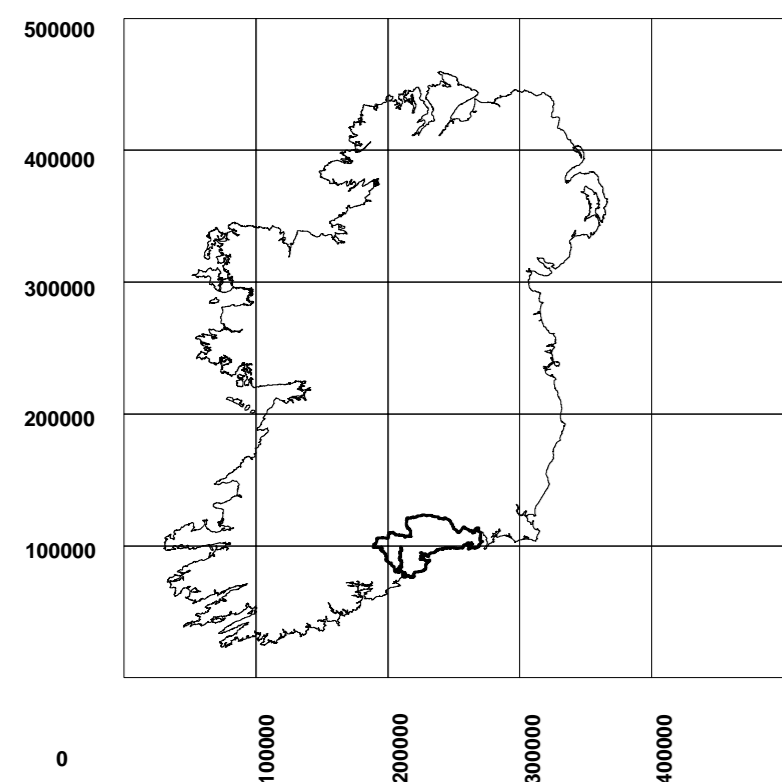


Soil Map of Co. Waterford
(To accompany Soil Survey Bulletin No. 44)



This map is not suitable for site specific interpretation



Soil Surveyed by J. Diamond, P Feeny,
J. Hartigan, K Sills, P Sills.

Cartography: V. Staples
Geographic Information Systems: E. McDonald

Head of Programme for Crops, Environment and Land Use: N. Cullenon



Published by TEAGASC, Oak Park, Carlow 2011



Ordnance Survey of Ireland / Government of Ireland
Copyright Permit No. MP 006711

Topographic base is derived from OSI 1:126,720
Edited by GSI, Dublin

Brown Earth	
Map unit	Parent material
BL	Broomhill
BL3	Broomhill Rolling Phase
BL4	Broomhill Moderately Steep Phase
CM	Clashmore
CM3	Clashmore Rolling Phase
CM4	Clashmore Moderately Steep Phase
CM5	Clashmore Steep Phase
CMh	Clashmore Shallow Phase
CMs	Clashmore Stony Phase
CMr	Clashmore Rocky Phase
CL	Clonroche
CL3	Clonroche Rolling Phase
CL4	Clonroche Moderately Steep Phase
CL5	Clonroche Steep Phase
CLh	Clonroche Shallow Phase
KR	Kill
KR4	Kill Moderately Steep Phase
KRr	Kill Rocky Phase
KRk	Kill Very Rocky Phase
SR	Suir
FK	Finisk

Grey Brown Podzolic	
Map unit	Parent material
DV	Dunganvan
DVr	Dunganvan Rocky Phase
KN	Kilmeadan
KN3	Kilmeadan Rolling Phase

Brown Podzolic	
Map unit	Parent material
KY	Knockboy
KY3	Knockboy Rolling Phase
KY3a	Knockboy Rolling Stony Phase
KY4	Knockboy Moderately Steep Phase
KYr	Knockboy Rocky Phase
KYs	Knockboy Stony Phase
KYk	Knockboy Very Rocky Phase
KYbr	Knockboy Brown Phase
KYbr3	Knockboy Brown Rolling Phase
KYbr4	Knockboy Brown Moderately Steep Phase
CH	Callaghane
SC	Slievecolilla

Podzol	
Map unit	Parent material
AH	Ahaun
AH3	Ahaun Rolling Phase
BC	Ballycondon
BC3	Ballycondon Rolling Phase
BC4	Ballycondon Moderately Steep Phase
BC5	Ballycondon Steep Phase
BCb	Ballycondon Boulderly Phase
BCs	Ballycondon Stony Phase
BCr	Ballycondon Rocky Phase
BCk	Ballycondon Very Rocky Phase
GR	Glenary
KL	Knockallsheen
PL	Portlaw
PL3	Portlaw Rolling Phase
PL4	Portlaw Moderately Steep Phase
PL5	Portlaw Steep Phase
DS	Drumslig
KM	Knockmealdown
MV	Monavullagh
BS	Ballysclanton

Gley	
Map unit	Parent material
BM	Ballymacart
DD	Dodard
LK	Lickey
NT	Newport
KD	Killadangan
WF	Waterford
CN	Clohernagh
CNa	Clohernagh Sandy Phase
MH	Mothel
MHp	Mothel Peaty Phase
MD	Moord
TM	Tramore
TMp	Tramore Peaty Phase

Urban / Water	
U	Urban
W	Water

Regosol	
Map unit	Parent material
BB	Ballynabola
BBp	Ballynabola Peaty Phase
CF	Coolfin
CFp	Coolfin Peaty Phase
KB	Kilbarry
SB	Slob
SBa	Slob Sandy Phase
SBe	Slob Silty Phase
SBp	Slob Peaty Phase
SD	Blown Sand

Peat	
AT	Aughty
ATc	Aughty Cutover Peat
ATc4	Aughty Cutover Moderately Steep Phase
P	Fen

Plaggen	
Map unit	Parent material
AM	Armore
MR	Monstray
MR3	Monstray Rolling Phase
MRh	Monstray Shallow Phase
CR	Curragh

Complex	
CFSD	Coolfin-Blown Sand Complex
KNCH	Kilmeadan-Callaghan Complex
KNCM	Kilmeadan-Clashmore Complex
KNCM3	Kilmeadan-Clashmore Rolling Phase Complex
SR/CF	Suir-Coolfin Complex

Series Phase Symbol

- a .. Sandy phase
- b .. Boulderly phase
- br .. Brown phase
- c .. Cutover peat
- e .. Silty phase
- h .. Shallow phase
- k .. Very rocky phase
- L .. Limestone influence
- o .. Poorly drained
- p .. Peaty phase
- r .. Rocky phase
- s .. Stony phase
- 3 .. Rolling phase (7° to 12°)
- 4 .. Moderately steep phase (13° to 19°)
- 5 .. Steep phase (> 19°)

Printed by Oxwood Printing Solutions, Dublin 2011