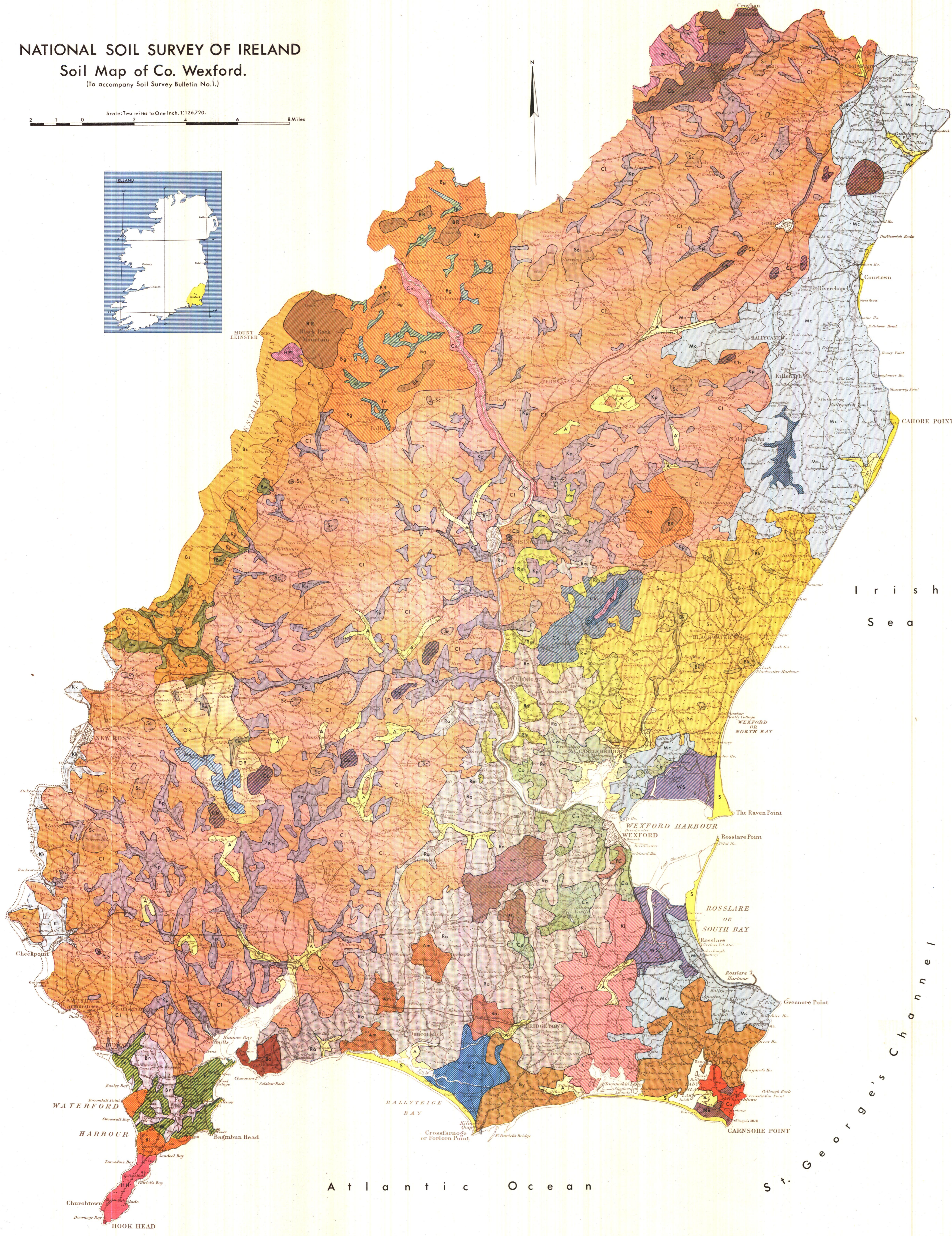
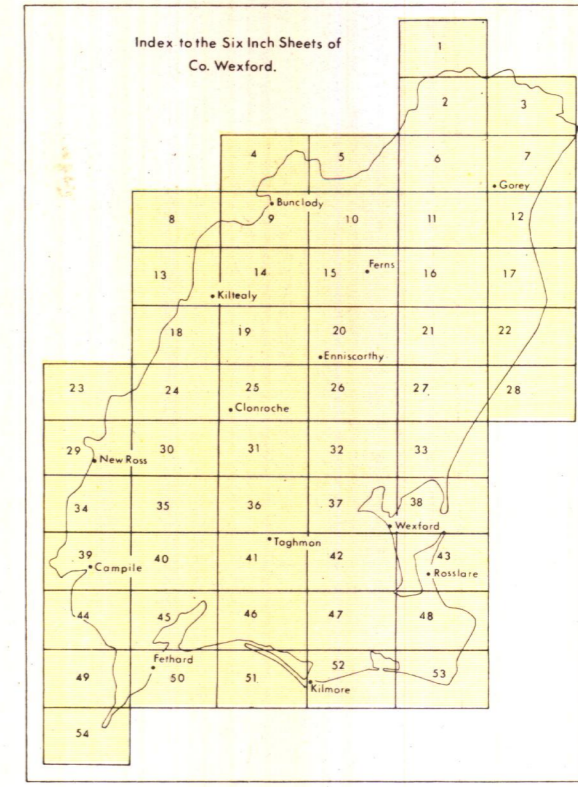
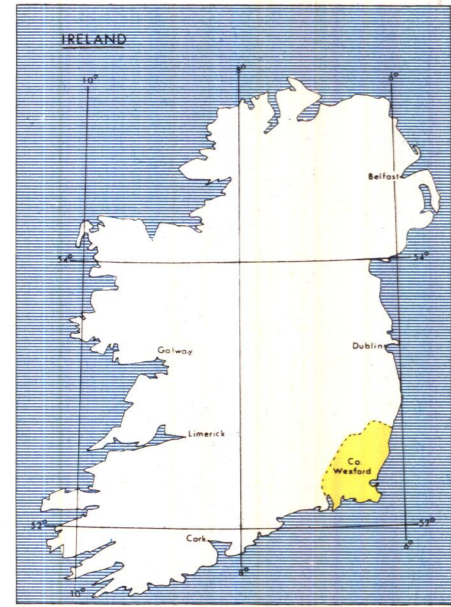


NATIONAL SOIL SURVEY OF IRELAND
Soil Map of Co. Wexford.
(To accompany Soil Survey Bulletin No.1.)

Scale: Two miles to One Inch. 1:126,720.



LEGEND

SOILS DERIVED FROM	ASSOCIATION	SERIES				
		Freely Drained	Freely Drained below pan	Imperfectly Drained	Poorly Drained	Very Poorly Drained
Glacial drift.	Drift of predominantly shale composition.	Am Ambrosetown				
	Drift of predominantly shale-limestone composition.	Ba Baldwinstown				
	Drift of predominantly sandstone composition.	Bf Broomhill				
	Drift of predominantly shale-sandstone composition.			Fe Fethard	Bn Ballinruan	
	Drift of predominantly shale-granite composition.	OR Old Ross			Ka Knockrae	
	Mixed drift of shale, quartzite and Irish Sea Muds.				Ra Rathangan	
	Drift of predominantly limestone composition.	HH Hook Head				
	Dense drift of Irish Sea origin Calcareous.				Mc Macamore	
Country rocks and derived drift.	Mica schist and drift of predominantly mica schist composition.	Bg Ballindaggan			Te Templehanba	
	Mainly mica schist bedrock.		BR Black Rock Mountain			
	Shale and drift of predominantly shale composition.	Cl Clonroche			Kp Kilpierce	
	Mainly shale bedrock.	Sc Slievcoiltha				
	Quartzite and derived drift.		FC Forth Commons			
	Granite and drift of predominantly granite composition.	Ky Kiltealy			Bw Ballywilliam	
Mainly glacial outwash sands and gravels.	Mainly granite bedrock.		Bs Blackstairs			
	Glacial sands with shale drift admixture.	Ba Bannow				
	Glacial sands with slight granite influence.	Ca Carne				
	Glacial sands with more extensive granite influence.	Ne Nethertown				
	Glacial sands with mixed drift admixture.	By Broadway				
	Glacial sandy drift over gravels, Calcareous.	Ki Killickin				
	Glacial sands. Coarse textured.	Sn Screen			Bk Ballyknockan	
Marine, lake and river sediments.	Glacial sands. Finer textured.	Rm Randallmill				
	Estuarine alluvium. Coarse textured.				Ks Kilmare Slab	
	Estuarine alluvium. Fine textured.				Ws Wexford Slab	
	River and estuarine alluvium.				Kk Kilmannock	
	Lake alluvium. Base rich.				Ck Coolacknick	Cj Cullartreegh
River alluvium and terrace gravels.	Lake alluvium. Base poor.				Mq Millquarter	
	River alluvium and terrace gravels.	Cn Clonamon				

SOILS DERIVED FROM	COMPLEX	SERIES	DRAINAGE
Mixed drift deposits.	CROSSTOWN	Cc Crosstown Crossbeg Johnstown	Variable
Shales with mixed igneous rock outcrops.	CARRICKBYRNE	Cb Carrickbyrne	Variable

Soil boundaries: - - - - -
 Altitudes: 421
 Principal Towns (Uncoloured): ○
 Roads: - - - - -
 Rivers: - - - - -

Where soil boundaries end thus > delineation is discontinued due to scale limitations.

P1 Basin Feat.
HP1 Hill Feat.
A Alluvium
S Aeolian Sand

Soil surveyed by M. J. Gardiner, T. F. Finch, Head of National Soil Survey, Pierce Ryan. Copies of this map and bulletin available from Publications Section, An Foras Talúnais, 33, Merrion Rd., Dublin 4. Price 30p.

Prepared and published by National Soil Survey, Soils Division, An Foras Talúnais. © Government of Ireland 1964.

Based on the Ordnance Survey by permission of the Government. Printed at the Ordnance Survey Office, Dublin. March, 1964.