

7th July 2020

PastureBase Ireland Current Performance (last 7 days):

**PastureBase**  
IRELAND

AFC	Stocking Rate	Cover/LU	Growth	Demand	Pregrazing Yield
735 kg DM/ha	3.63 LU/ha	202 kg DM/ha	72 kg DM/ha	57 kg DM/ha	1,648 kg DM/ha

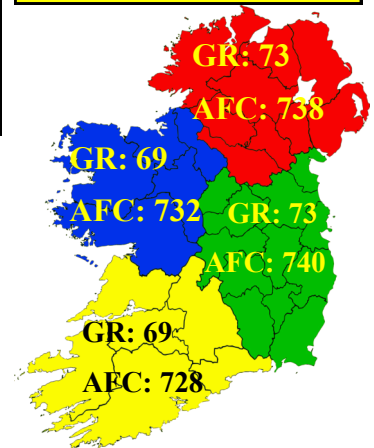
**Predicted Growth Rate: Elodie Ruelle Moorepark**

Ballyhaise: 92 kg DM/ha South Wexford: 54 kg DM/ha  
Athenry: 75 kg DM/ha Clonakilty: 70 kg DM/ha

Grass DM: 15.6%

Moorepark (1400 Kg DM/ha, Dry @ 10.45am)

Below: Covers in the Last 7 Days



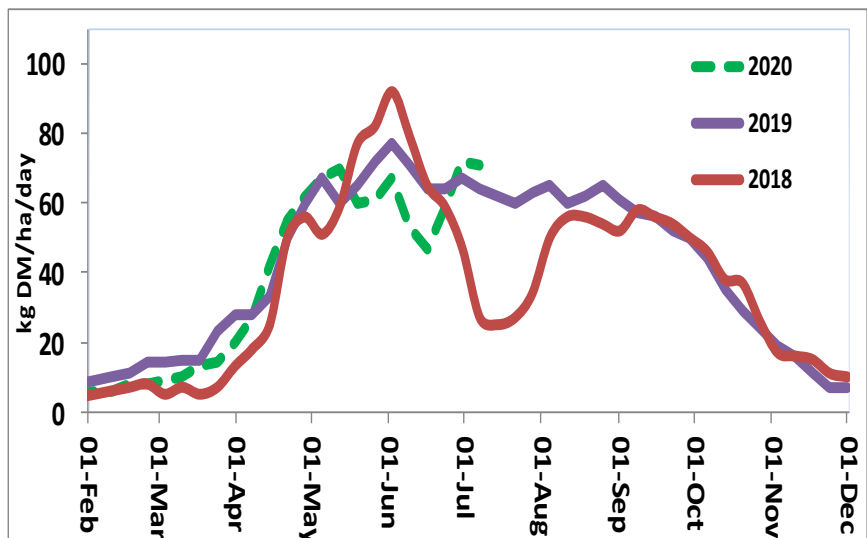
- **Growth currently exceeding demand by 15 kg DM/ha nationally. With high growth rates predicted in most areas for the coming week.**
- For most farms Cover/LU, AFC and Pre-grazing Yield are already above target. **These will increase further without action.**
- Make use of improved forecasted conditions to achieve the grazing targets below by removing surplus grass as silage bales or taking out ground for reseeded.

**Grazing Targets:**

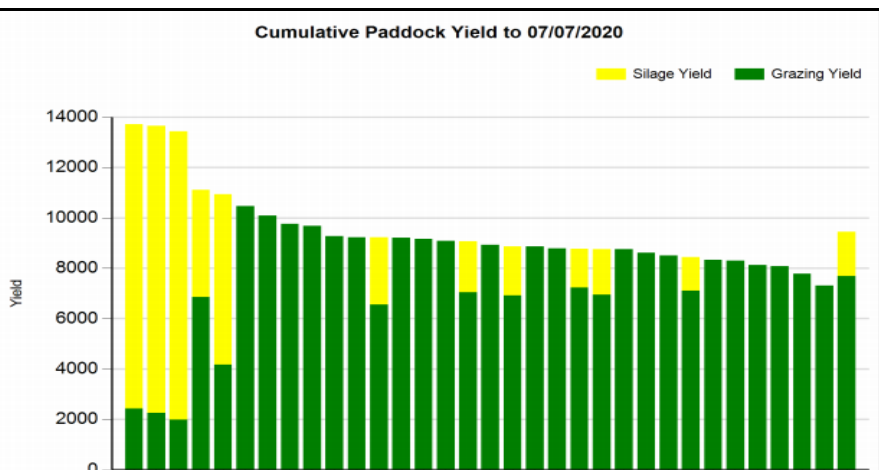
Pregrazing: 1200-1400 kg DM/ha  
AFC: 600-700 kg DM/ha  
Cover/LU: 160-180 kg DM/ LU  
Drystock: 12 Days Ahead  
Rotation Length: 18-21 Days  
Residuals: 4 cm

**Hit the targets to grow more grass**

Bryan Daniels 2019 GFOY Overall Winner has grown 9.6 T Grass DM per ha to date this year (07/07/20). 7.1 T DM/ha came from grazing, with 5.1 grazings per paddock. And 0.4 silage cuts per paddock yielding 2.5 T DM/ha. This means that Bryan's average pre-grazing yield is 1,392 Kg DM/ha (7,100 Kg DM/ha / 5.1 grazings = 1,392 Kg DM/ha). This is the optimum for grass growth and milk solids. Bryan has ensured this by walking the farm weekly, using PastureBase and holding an 18-21 day rotation. Growing conditions on his farm also helped. Bryan says "anything over 1,500 Kg DM/ha is marked as surplus straight away and removed as silage." Grass10 encourage all farmers to monitor their own performance through their PastureBase Ireland account.



The PastureBase Ireland 2020 National Grass Growth Curve showing recovery in grass growth over the past two weeks.



Bryan's Annual Grass Tonnage is 9.6 T DM/ha to date. Grazing yield is in green and silage yield is in yellow.

7th July 2020

## Beef Edge Podcast: Episode 23 - "How my farm grows more grass"

Interview with Sean Roddy, Beef Farmer & Grass10 Course Member, Lyons Demesne, Co. Kildare. Listen to the full interview here <https://www.teagasc.ie/animals/beef/the-beef-edge-podcast/>

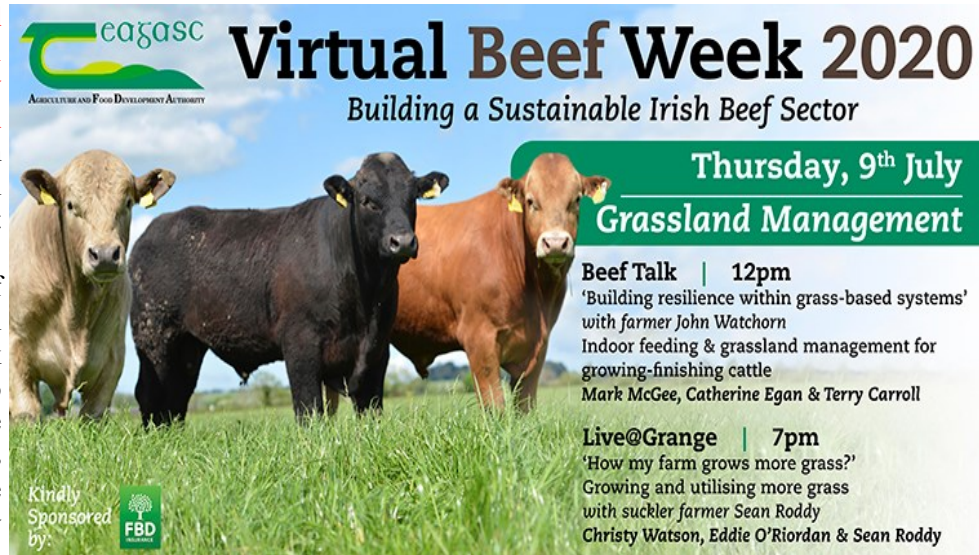
### Key Points:

- Suckler to beef system - spring calving herd with all offspring brought to slaughter
- All steers and heifers finished off grass at 18-22 months at carcass weight 300-320 Kg
- 280 T Lime spread over past few years to build soil pH
- 50 cows & calves will graze a 1Ha paddock in 2 days (at 1,400 Kg DM/Ha)
- High animal performance from grass underpins sustainability on the farm
- Grass10 Course - learning from others, benchmarking my farm & good diversity in the group

**Sean's Quote:** "There's no key secrets to good grassland management - it's just know the basics and keep executing them correctly."

### Upcoming Events:

This week is **Virtual Beef Week 2020 with Thursday 9th July focusing on Grassland Management.** Sean Roddy is taking part in the Live@Grange event this Thursday at 7pm. Also 2018 GFOY Beef winner John Watchorn will be live on BeefTalk at 12pm. There will also be video releases on the day from beef farmers participating in the Grass10 courses. So stay tuned!



**Teagasc**  
AGRICULTURE AND FOOD DEVELOPMENT AUTHORITY


## Virtual Beef Week 2020

Building a Sustainable Irish Beef Sector

**Thursday, 9th July**  
**Grassland Management**

**Beef Talk | 12pm**  
'Building resilience within grass-based systems' with farmer John Watchorn  
Indoor feeding & grassland management for growing-finishing cattle  
Mark McGee, Catherine Egan & Terry Carroll

**Live@Grange | 7pm**  
'How my farm grows more grass?'  
Growing and utilising more grass with suckler farmer Sean Roddy  
Christy Watson, Eddie O'Riordan & Sean Roddy

Kindly Sponsored by: 

Mike Bermingham 2019 GFOY Dairy Winner is taking over @TeagascGrass10 Twitter and @Teagasc Instagram on Wed 29th July. Stick this date in your diary to see how focusing on the simple things can give a great return. More details to follow.



**Teagasc**  
AGRICULTURE AND FOOD DEVELOPMENT AUTHORITY

**Grass10**  
GRASSLAND EXCELLENCE FOR IRISH LIVESTOCK

"Making the best use of grass in a simple system"

## Social Media Takeover

with **Mike Bermingham**  
2019 Dairy Category Grassland Farmer of the Year

**Wednesday, 29th July**

@Teagasc  
@TeagascGrass10