

Beef Environmental Efficiency Programme Suckler 2020 (BEEP – S) – what you need to know

Aidan Murray
Beef specialist, Teagasc
Animal and Grassland
Research and Innovation
Programme



The Department of Agriculture Food and the Marine (DAFM) announced an enhanced BEEP scheme for suckler farmers in early March.

Applications

Applications are open until midnight on the 15 May and can be submitted online through your DAFM Agfood account, or by your advisor if they are given the authority to do so by you via a DAFM text service.

Calves born in the herd of the applicant between 1 July 2019 and 30 June 2020 will be eligible for payment in the programme if the various actions are selected by the applicant.

Compulsory action

• **Weighing (cows and calves):** This is essentially the same action as in last year's programme, where participants must weigh each unweaned calf and dam, and submit weights to ICBF within seven days – all calves being submitted for weighing must have been born between 1 July 2019 and 30 June 2020.

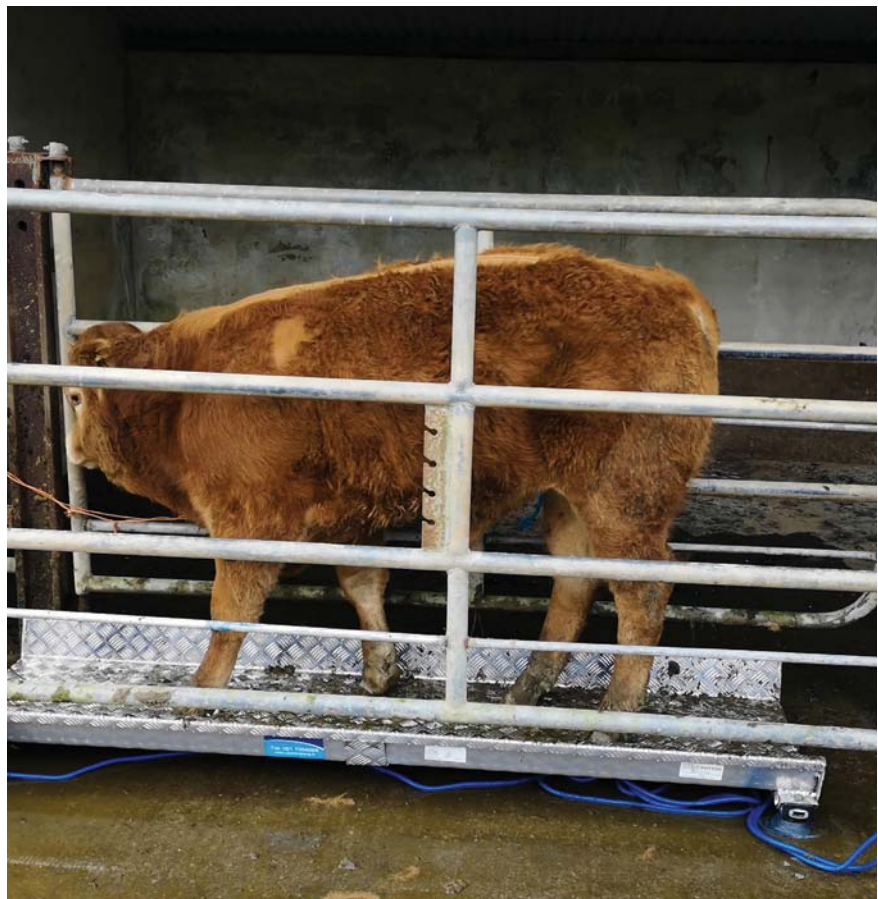
Unweaned live Calves and dams must be weighed on the applicants holding on the same day. Only scales registered can be used and they can be rented, owned or borrowed from a third party.

Weights must be submitted between 1 January 2020 and 1 November 2020.

Optional actions

• **Meal feeding pre- and post- weaning or vaccination:** These are optional actions, but only select them at the time of application if you are going to carry them out, otherwise penalties will apply.

Meal feeding means feeding concentrate to eligible calves in the four



weeks prior to and for two weeks after weaning. Proof of meal purchase and weaning dates will have to be recorded.

Vaccination refers to the use of vaccines to prevent respiratory disease (pneumonia) pre-weaning. Again, you will need to choose particular vaccines that target the causal organisms, retain proof of vaccination purchase and record the dates of administration to calves.

• **Faecal Egg Testing for Liver and Rumen Fluke in Cows:** Again, this is an optional action that you can select in addition to the actions above, where you collect 10 dung samples from cows. They will be sent to a DAFM-approved lab where they will be pooled and checked for evidence of

liver and rumen fluke. You can then use the results to decide on the dosing strategy.

Rates of payment

The additional options greatly improve the rate of payment:

- **Action 1 (Mandatory) – Weighing** €50 for first 10 cow/calf pairs weighed €40 thereafter, to a maximum of 100.
- **Action 2 (Optional)** – Can select one of the following: Meal feeding at €30 per calf weighed, to a maximum of 100 calves.
- Vaccination at €30 per calf weighed, to a maximum of 100 calves.
- **Action 3 (Optional)** – Can be selected in addition to Action 1 and/or Action Faecal Egg Testing at €10 per cow, to a maximum of 100.