



# Grassland in Ireland

**Elodie Ruelle**

**December 3rd 2020**

**Animal and Grassland Innovation Centre, Teagasc, Moorepark**



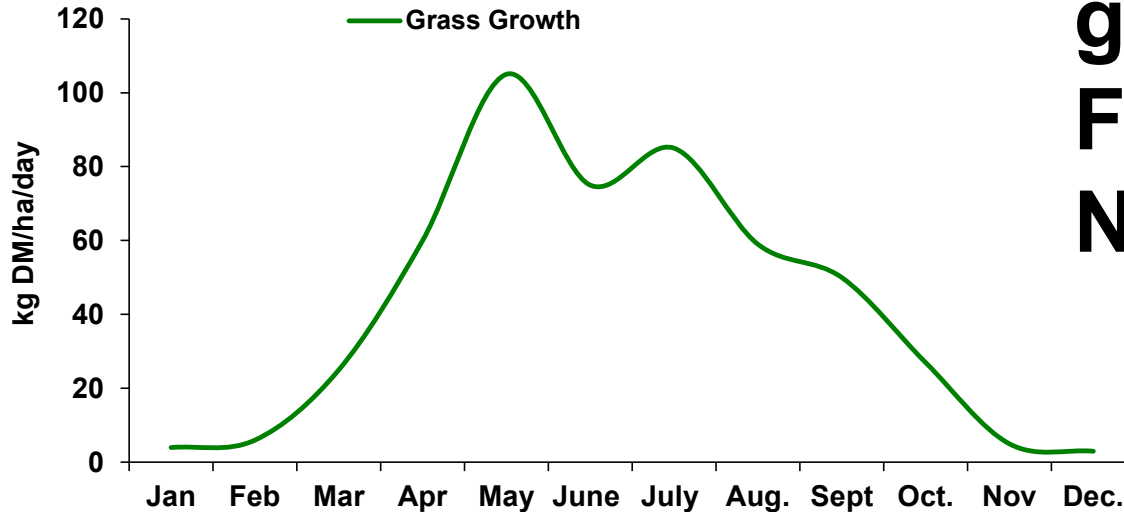
# Grassland in Ireland

- Ireland is grass based – the most grassland based country in Europe
- 80 % of the agriculture area is on pasture, hay and grass silage
- Inputs are reasonably low



# Irish grazing system Characteristics

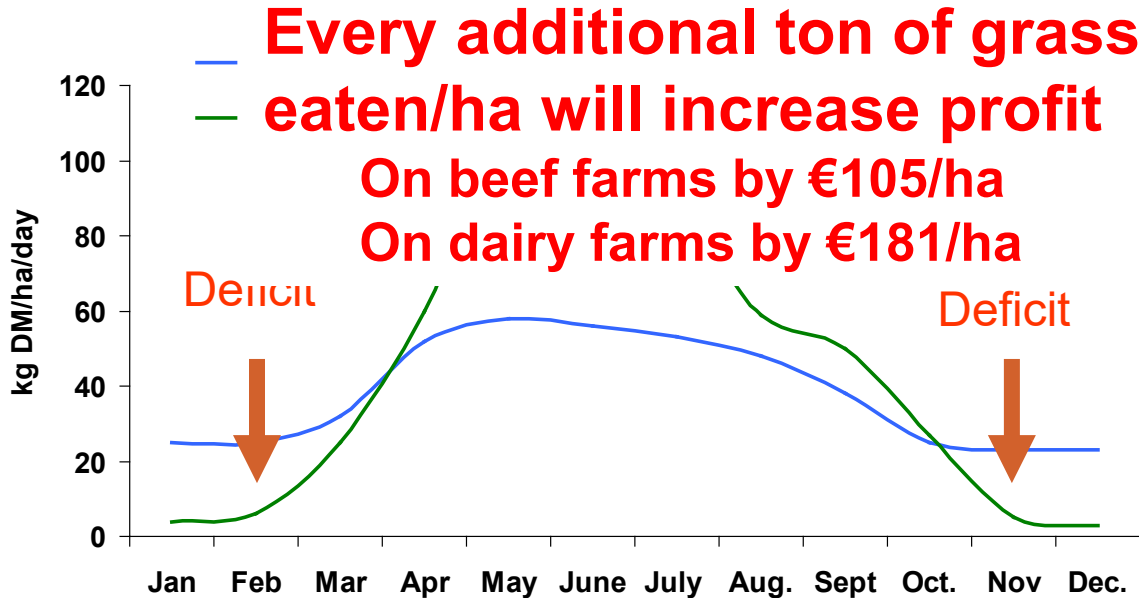
**Extended  
grazing season:  
February to  
November**



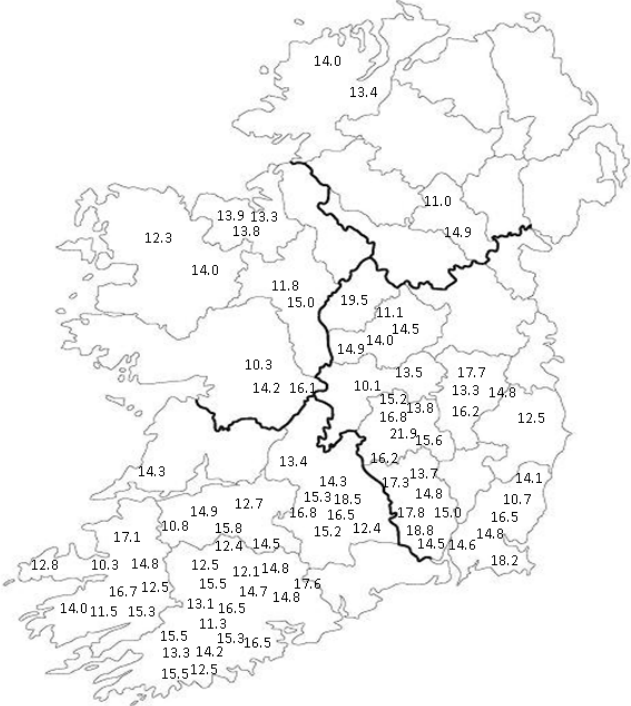
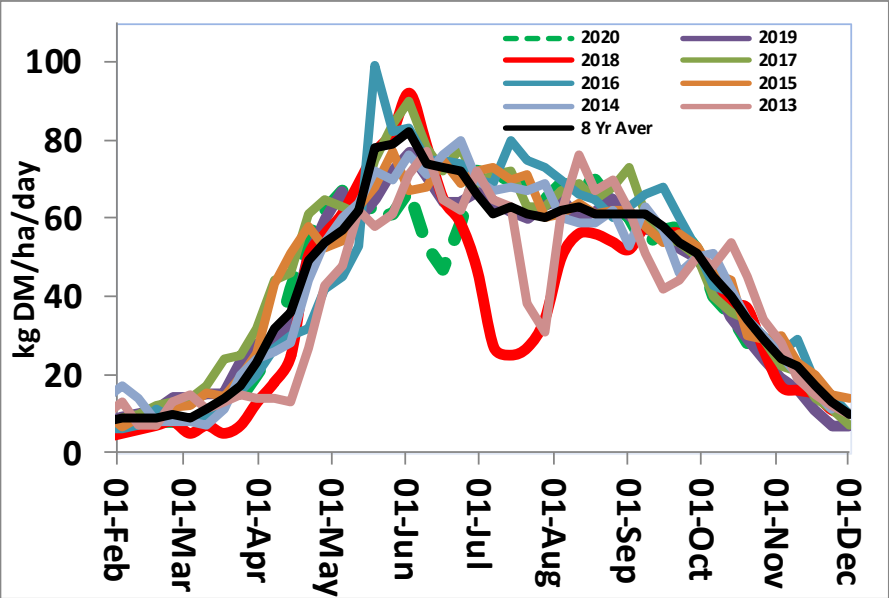
# Irish grazing system Characteristics

Relative feed cost :

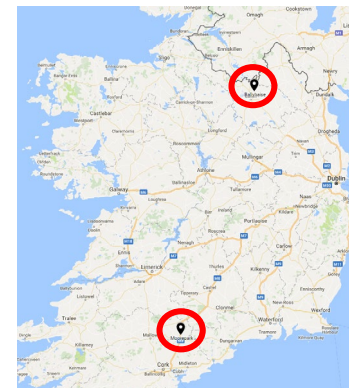
	c/kg DM	Relative
	7.3	1
	14.0	1.9
	21.0	2.9
	10.4 - 15.3	1.8



# Variability of grass growth in Ireland



# Impact of weather and soil type (SR=2.5 fert = 250 kg N/ha)



## Moorepark

Soil	Average growth	Grass intake per cow	Number of day without silage feeding
Free draining	<b>+1,264</b>	<b>-563</b>	<b>-13</b>
Heavy			

## Ballyhaise

Soil	Average growth	Grass intake per cow	Number of day without silage feeding
Free draining	13,664 <b>-5</b>	3,593 <b>+66</b>	222 <b>+11</b>
Heavy	14,399 <b>-534</b>	2,778 <b>-186</b>	188 <b>-10</b>
	<b>+675</b>	<b>-815</b>	<b>-34</b>

# Incoming challenges

- Green house gases reductions
- Water quality
  - Probable reduction of N fertiliser (20%)



Review of the Influence of Chemical Nitrogen Application Rate, Soil Type and Agroclimate Location on Grass Production, Feed Budgets, Nitrogen Use Efficiency, Environmental Impact and Farm Profitability



November, 2020

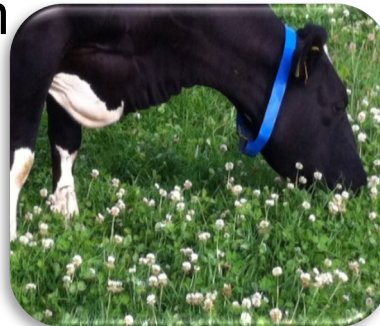
Reduction of 50 kg N/ha -> reduction of 0.25 cow/ha

- 20% reduction lead to a reduction of farm profit of:
  - 16% sheep farm
  - 12% beef farm
  - 15% dairy farm



# Solutions

- Improving grass utilisation
- Improving soil fertility
- Incorporate clover on farm





# Conclusion

- Ireland is grass based – the most grassland based country in Europe
- Competitive advantage: long grazing season but there is variability
- Challenges to come but there is solutions



**Thank you for  
your attention**