

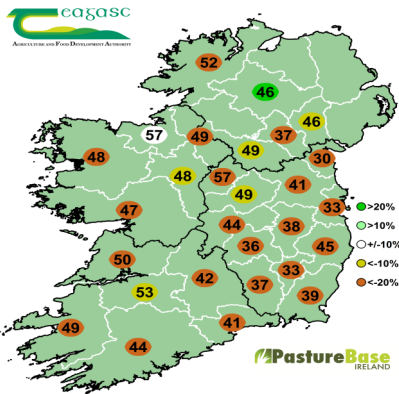
3rd August 2021

## PastureBase data from dairy farms:



AFC	Cover/LU	Stocking Rate	Growth	Demand	Diet (Grass + Meal)	Pre Grazing Yield
652 Kg DM/Ha	191 Kg DM/LU	3.4 LU/ha	45 Kg DM/ha	50 Kg DM/ha	14.5 Kg DM + 3.5 Kg	1490 Kg DM/Ha

Grass growth measurement  
Today's grass growth (kg DM/ha/day)



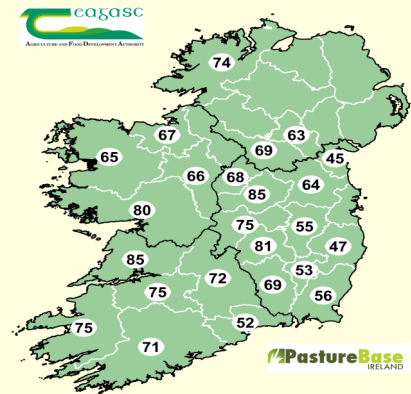
On the left: counties map showing **current** grass growth rates over the last week.

On the right: counties map showing **predicted** grass growth over the next 7 days from farms involved in Elodie Ruelle's MoSt grass growth model (55 farms).

### Predicted Growth Rate:

- Ballyhaise 71 kg DM/ha
- Wexford 41 kg DM/ha
- Athenry 75 kg DM/ha
- Clonakilty 73 kg DM/ha

Grass growth predictions  
Next week (kg DM/ha/day)



## Prioritising quality grass for calves in Co. Sligo

Neill Boland, his wife Catherine and 4 children farm just outside Enniscrone in Co. Sligo. Neill Boland won the Beef Merit Award for Grazing Management in the Grassland Farmer of the Year Competition in 2018. Neill runs a 56ha farm in 3 different blocks and is contract rearing dairy heifers & is also rearing male dairy-beef calves as part of the Teagasc Everycalf programme, started in 2020.

I am satisfied with our grass growth currently, growth rate has recovered to 64 Kg DM/Ha after a couple of weeks of poorer growth due to the hot weather.

My priority stock at the minute are the 2 groups of calves I have on farm. These animals get preferential grass at covers of about 800 Kg DM/Ha and I run a leader follower system and older heifers and bullocks finishing grazing paddocks after the calves. This is all about maximising weight gain while managing grass as best as I can. Weight gain currently is 0.9 Kg/day in the calves and 1.1 Kg/Day in the 1-2 year old bullocks

I am following animals with 20 units of CAN per acre after grazing and I have reduced N spread on farm to encourage more clover into my swards over the summer.

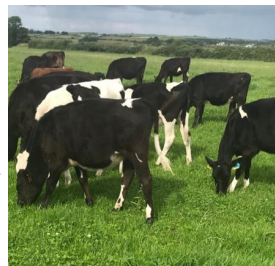


### Grass Dry Matter %

- Clonakilty, Co. Cork**  
21% (1500 Kg DM/Ha)
- Grange, Co. Meath**  
22.3% (1375 Kg DM/Ha)

### Boland's Grass Data

AFC	519 kg DM/ha
Days ahead	13 Days
Stocking Rate	3.09 LU/ha
Kg Liveweight/ha	2116 Kg/ha
Growth	64 kg DM/ha/day
Demand	41 kg DM/ha/day
PGY	1,450 kg DM/ha



## Spread Lime during August!

"I took the opportunity with the good weather to spread lime on my farm during late July. I spread 1 tonne/acre on about 20 acres of one of my grazing blocks"

Consult your soil samples and target paddocks that require Lime during the month of August before weather and ground conditions start to deteriorate.



## Grass10 Grazing Tips

Growth rates on Dairy farms are back to 45 Kg DM/ha this week and 44 Kg on Beef & Sheep farms, This has reduced further since last week, however most parts of the country have received rain and will start to recover as we move through the week.

- Hold rotation length at 20-25 days, hold AFC above 500 Kg DM/ha and introduce supplement. Continue to walk the farm every 5 days to establish growth rates. On parts of the country that have received rain or on heavier soils where growth remains strong, keep pre-grazing yields to 1400 Kg DM/ha and cover/ LU at 160-180 Kg DM/LU or 12-14 days ahead.
- As we enter August, our focus moves to the Autumn grazing period & extending the grazing season. On the 2nd page of the newsletter we go through the targets at different stocking rates. Farms that are stocked at 3.5 LU per ha must start building grass for the Autumn this week.
- Use this opportunity over the next week or 10 days to correct any poorly grazed paddocks so as to ensure that quality grass can be grown on paddocks throughout the month of August.

3rd August 2021

PastureBase data from sheep & beef farms:

AFC	Days Ahead	Stocking Rate	Growth	Demand	Pre Grazing Yield
608 Kg DM/Ha	16 days	2.75 LU/ha	44 Kg DM/ha	39 Kg DM/Ha	1410 Kg DM/ha

Changing Focus to Autumn Grazing

The grazing championship begins in August with the planning and building up of grass while growth rates are still strong. This is the first piece of the autumn grazing management jigsaw.

What is this championship worth? For 100 cows it's worth €180 for every extra day at grass. **You can have more days at grass if you follow the targets and have a plan.**

The average farm cover (AFC) for the autumn grazing targets are summarised in the table on the right. These targets are a good guide and will work for most farms. **However, measuring on PastureBase and completing an autumn grass budget are much more accurate.** The level of grass to build will depend on farm stocking rate and potential to grow grass in the autumn. Heavy soils farmers should target a maximum of 900-1000 Kg DM/ha as heavy covers are harder to graze during wet weather.

As a guide, to reach the targets higher stocked farms (3.5+ LU/ha) must begin building grass this week. Farms stocked around 3.0LU/ha should begin next week, and lower stocked farms (2.5 LU/ha) should begin the week after next.

Join us on Thursday 5th August at 7pm on Zoom as we discuss the importance of building grass during August to drive grass utilisation and profitability on your farm during the Autumn

Register at:

<https://bit.ly/BuildingAutumnGrass>

Date	Cover/Cow (Kg DM)	Average Farm Cover (Kg DM/Ha)	Rotation Length
<b>STOCKING RATE OF 2.5 LU/HA</b>			
1 <sup>st</sup> August	180	450	20 Days
Mid - August	200	500	25 Days
1 <sup>st</sup> September	300	750	30 Days
Mid-September	400-450	1,000-1,100	35 Days
1 <sup>st</sup> October	400	1,000	40 Days
1 <sup>st</sup> November	60% of your grazing platform should be closed for Spring at this stage		
Fully Housed	550-600		
<b>STOCKING RATE OF 3.0 LU/HA</b>			
Mid - August	250	750	25 Days
1 <sup>st</sup> September	330	990	30 Days
Mid-September	370	1100	35 Days
1 <sup>st</sup> October	380	1150	40 Days
1 <sup>st</sup> November	60% of your grazing platform should be closed for Spring at this stage		
Fully Housed	600-650		
<b>STOCKING RATE OF 3.5 LU/HA</b>			
Mid - August	220	770	25 Days
1 <sup>st</sup> September	280	980	30 Days
Mid-September	340	1200	35 Days
1 <sup>st</sup> October	335	1175	40 Days
1 <sup>st</sup> November	70% of your grazing platform should be closed for Spring at this stage		
Fully Housed	700-750		



## Building Grass for an Extended Grazing Season

Thursday, 5<sup>th</sup> August | 7pm

Join the Grass10 & PastureBase team as they discuss:

- August is the beginning of the grazing calendar
- Learn the why, what and how of building grass for Autumn
- Get the views of experienced dry and heavy soils farmers
- Get your questions answered by the Grass10 & PastureBase team

Hear from special guest's heavy soils farmer, David Brady, Co. Cavan & dry soils farmer, John Galvin, Co. Cork as they give their own experiences on how they improved their farms.

Or visit [www.teagasc.ie/grass10](http://www.teagasc.ie/grass10)

### GFOY Update - David O'Leary Young Grassland Farmer of the Year 2020



"I wouldn't describe the farm as being drought prone, but growth has been very slow over the past few weeks."

AFC	673 Kg DM/ha
Cover/LU	184 Kg DM/ha
Growth	42 Kg DM/ha/day
Demand	62 Kg DM/ha/day
Stocking Rate	3.65 LU/ha
PGY	1,400 Kg DM/ha
Fertiliser	Following with 1u N/ac per day (23u N/ac protected urea, and 19-0-15 on some paddocks low in K)
Annual Tonnage	8,200 Kg DM/ha