



*Gerard McCutcheon*  
Setting the Scene

# Teagasc Pig Feed Cost and Price Monitor

Year	2022														AVERAGE
MONTH	Jan-22	Jan-21	Feb-21	Mar-21	Apr-21	May-21	Jun-21	Jul-21	Aug-21	Sep-21	Oct-21	Nov-21	Dec-21	Jan-22	12 Months
<b>FEED PRICES</b>		<b>€ PER TONNE</b>													
CREEP PELLETS		903	919	917	931	943	939	939	945	969	970	976	988	1001	953
LINK PELLETS		642	649	655	658	659	659	659	667	681	683	685	690	708	671
WEANER PELLETS		346	351	355	358	365	372	372	373	375	379	384	393	412	374
DRY SOW MEAL		280	284	288	287	294	300	300	302	307	308	311	324	342	304
LACTATING MEAL		316	317	325	324	330	335	335	337	343	345	347	360	373	339
FINISHER MEAL		291	293	299	299	306	311	312	314	318	320	325	332	355	315
COMPOSITE		316	319	325	325	332	337	339	341	346	348	352	361	382	342
FEED COST PER KG DEAD c		112	113	115	116	118	120	118	118	120	121	122	125	133	120
<b>PIG PRICES</b>		<b>c PER KG</b>													
FINISHER NET PRICE		158	155	157	163	171	172	167	163	155	151	147	147	143	158
MARGIN OVER FEED PER KG c		46	41	42	48	53	52	50	45	35	30	25	21	10	38

## PRODUCTION STANDARDS

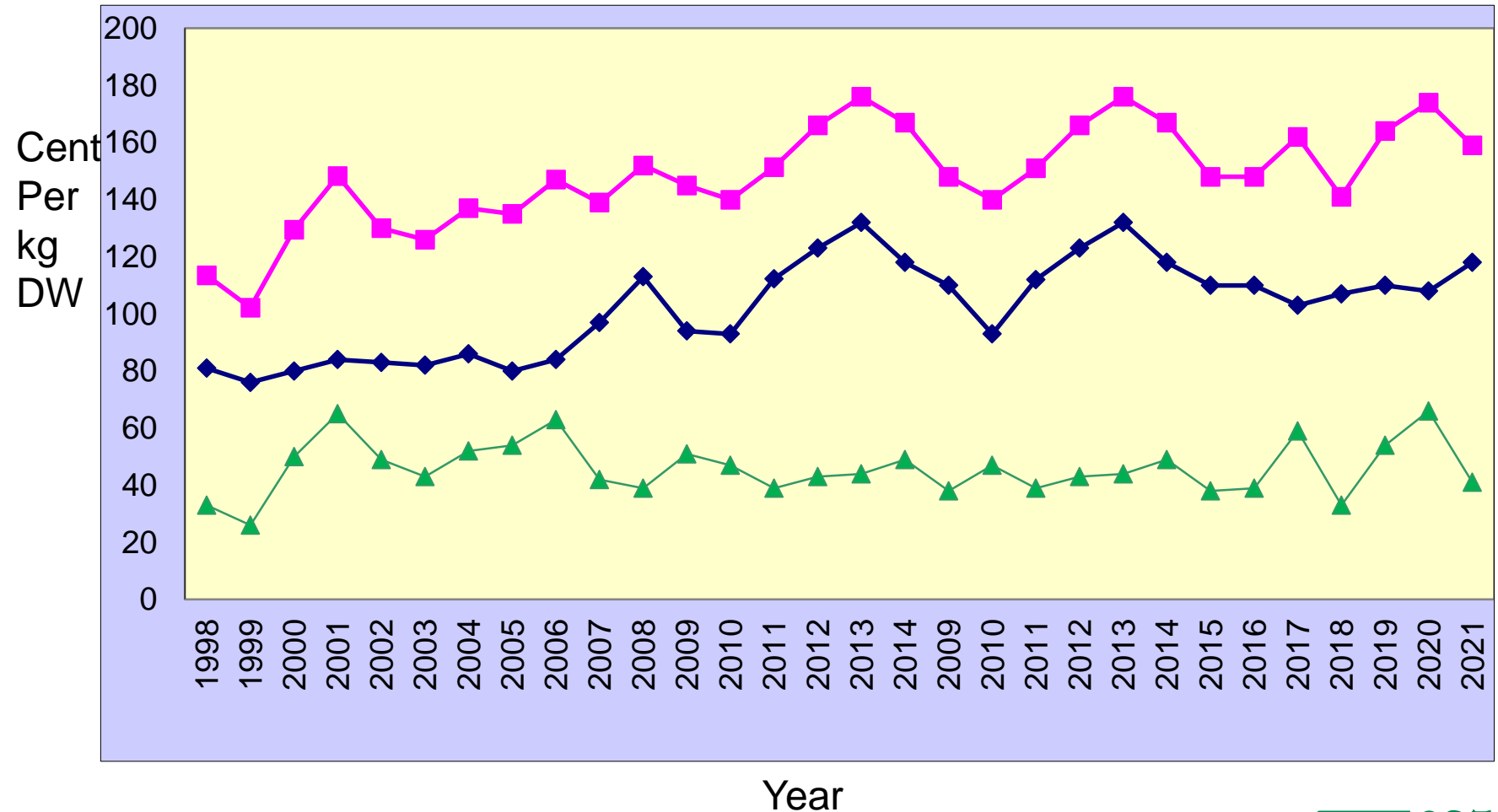
NO.PIGS PER SOW PER YEAR	2020	2019
FEED PER SOW PER YEAR T	1.34	1.35
CREEP FEED PER PIG KG	3.7	3.7
LINK FEED PER PIG KG	9.2	7.4
WEANING WEIGHT KG	7	7
WEANER TRANSFER WEIGHT KG	39.2	39.9
WEANER FCE	1.85	1.84
FINISHER FCE	2.6	2.68
FINISHER SALE WEIGHT (DEAD)KG	88.2	86.7
KILL OUT %	76.5	76.4

	2020	2019
NO.PIGS PER SOW PER YEAR	27.5	26.8
FEED PER SOW PER YEAR T	1.34	1.35
CREEP FEED PER PIG KG	3.7	3.7
LINK FEED PER PIG KG	9.2	7.4
WEANING WEIGHT KG	7	7
WEANER TRANSFER WEIGHT KG	39.2	39.9
WEANER FCE	1.85	1.84
FINISHER FCE	2.6	2.68
FINISHER SALE WEIGHT (DEAD)KG	88.2	86.7
KILL OUT %	76.5	76.4

		QUARTER ENDING				AVERAGE
		Apr-21	Jul-21	Oct-21	Jan-22	
COMPOSITE FEED PRICE	€/ tonne	323	336	345	365	342
FEED COST PER KG DEAD c		115	118	120	127	120
PIG PRICES	c per Kg					
FINISHER		158	170	156	146	158
MARGIN OVER FEED PER KG DEAD c		44	52	37	19	38

Note Production parameters will change to 2021 figures in June 2022.

# Margin over Feed Figures 1998 to 2021



# Margin over feed 1998 to 2021

YEARS	1998-2002	2003-2007	2008-2012	2013 -2017	2018-2021
<b>FEED PRICES (€ per tonne)</b>					(4 Years)
Composite Meal	213	224	286	311	314
Feed Cost per kg Dead Weight c	81	86	107	114	111
<b>PIG PRICES ( c per kg dead)</b>					
Finisher	125	137	151	160	160
<b>MARGIN OVER FEED (c per kg dead)</b>	<b>45</b>	<b>51</b>	<b>44</b>	<b>47</b>	<b>49</b>

# Margin over Feed Figures

- Feed is €1.33 / kg DW
- Margin over feed is 10 cent / kg
- Need at least 47 cent / kg
- At 89kg DW - 37 cent loss
- = €33 loss per pig sold – not allowing for other increased costs

# Non feed costs from Profit Monitor 2020

	<u>cent/kg DW</u>	
Labour / Management	15.9	
Healthcare	6.6	
Heat, Power & Lights	4.3	
Transport	1.6	
A.I.	1.9	
Manure	1.8	
Repairs	3.2	
Administration	1.4	
Environment/Dead pigs	1.2	
Insurance	1.7	
Miscellaneous	1.3	
	<b>40.9</b>	
Building Dep + Interest	6	
<b>Overall Total</b>	<b>47</b>	

# Improved output...

Sow performance	2000	2010	
Pigs/sow/year	21.5	23.9	
Carcase weight at sale (kg)	68.1	78.9	
% Increase in meat per sow		28%	

\*Source Teagasc PM

# Improved output...

Sow performance	2000	2010	2020
Pigs/sow/year	21.5	23.9	27.5
Carcase weight at sale (kg)	68.1	78.9	88.2
% Increase in meat per sow		28%	65%

\*Source Teagasc PM



# Improved Growth Performance

Growth rate and feed conversion from weaning to sale	2000	2010	
Average live weight at sale kg	90.1	103.6	
<b><u>Weaning to sale:</u></b>			
Average daily gain (g/day)	585	668	
Kg of feed per kg of carcass	3.66	3.69	

\*Source Teagasc PM

# Improved Growth Performance

Growth rate and feed conversion from weaning to sale	2000	2010	2020
Average live weight at sale kg	90.1	103.6	115.3
<b><u>Weaning to sale:</u></b>			
Average daily gain (g/day)	585	668	735
Kg of feed per kg of carcass	3.66	3.69	3.50

\*Source Teagasc PM

**Thank you**



**Please put your questions in  
the Q&A**