



From Action to Results

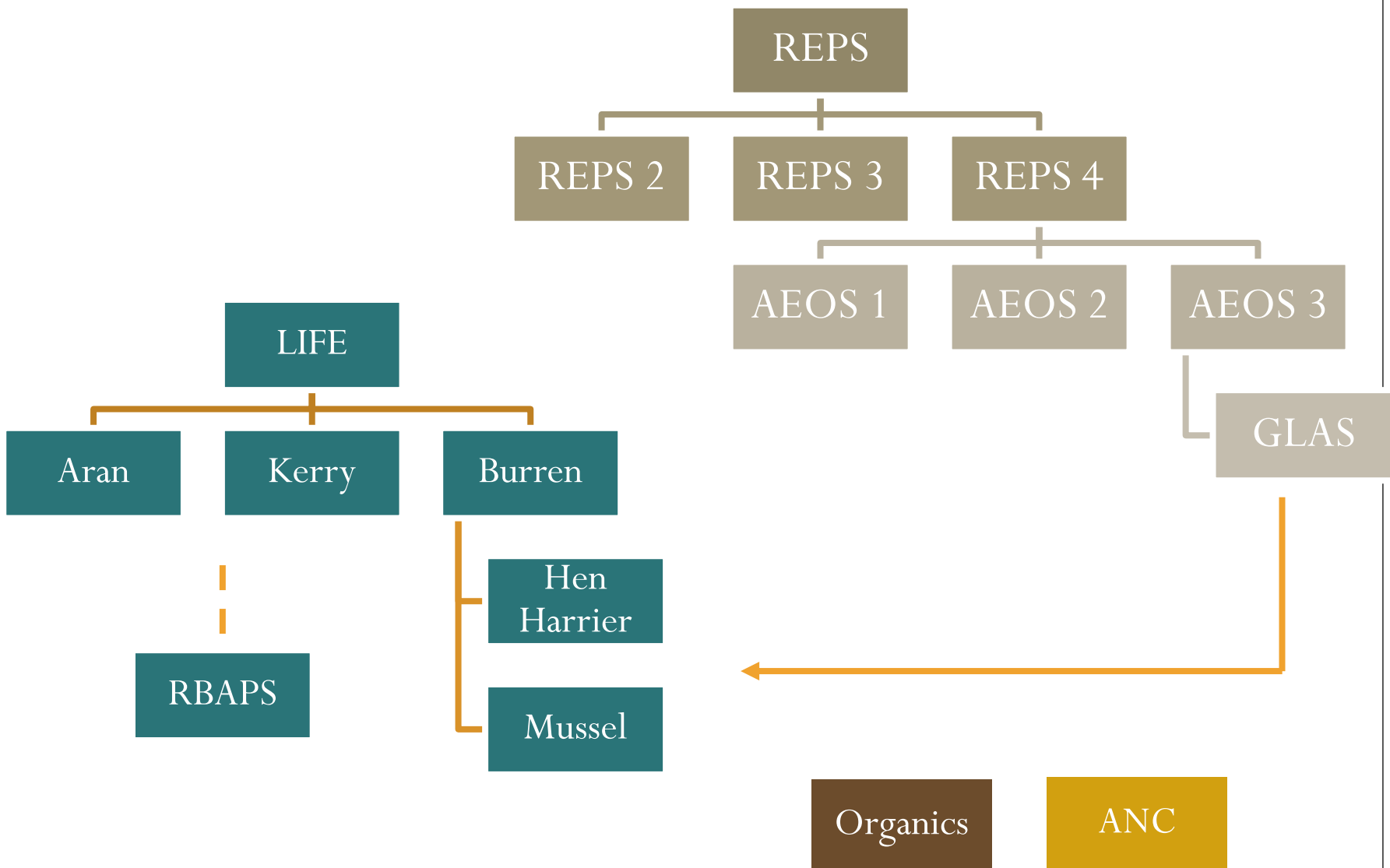
The shifting focus of Agri Environment Schemes

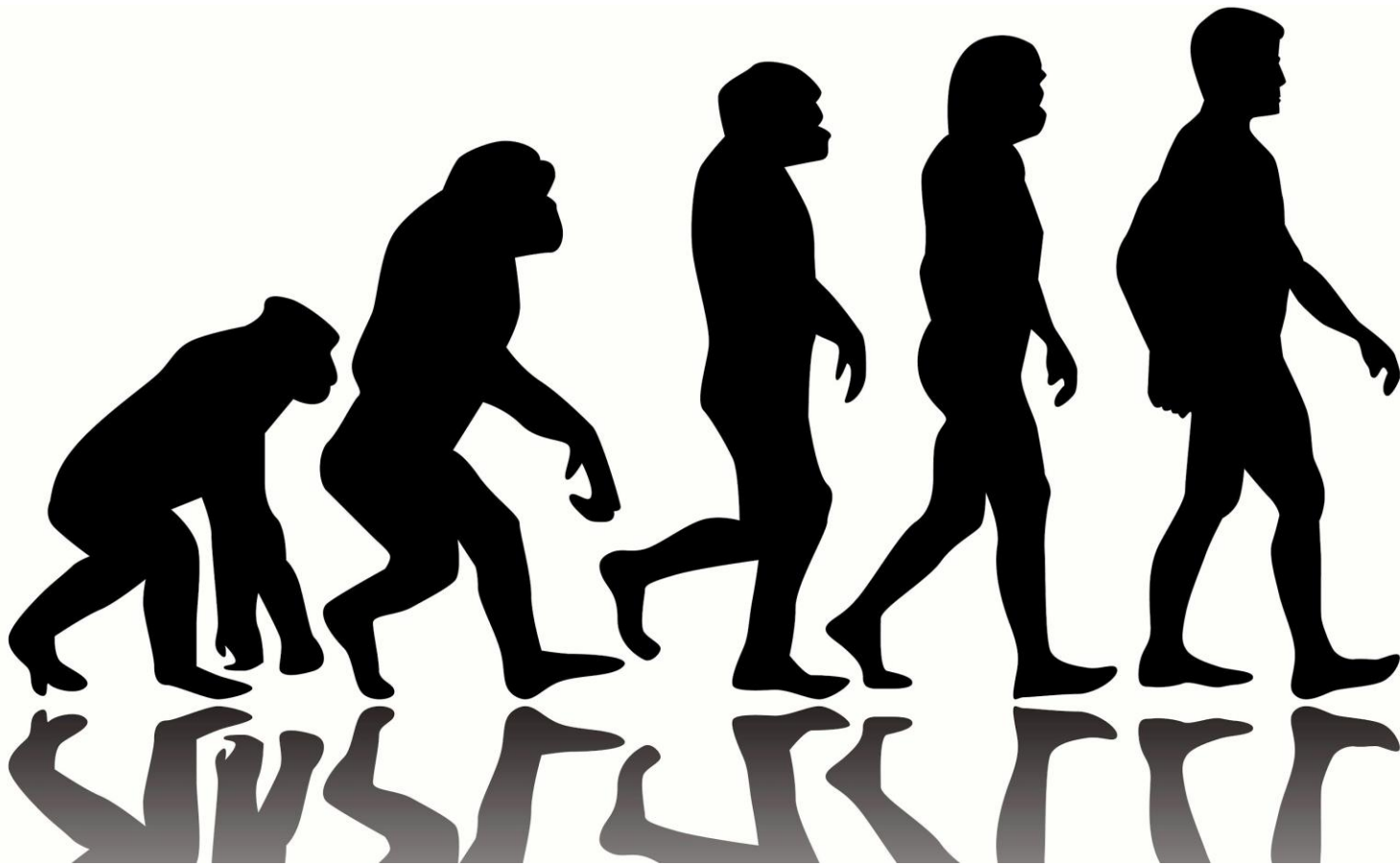
Ronan O'Flaherty

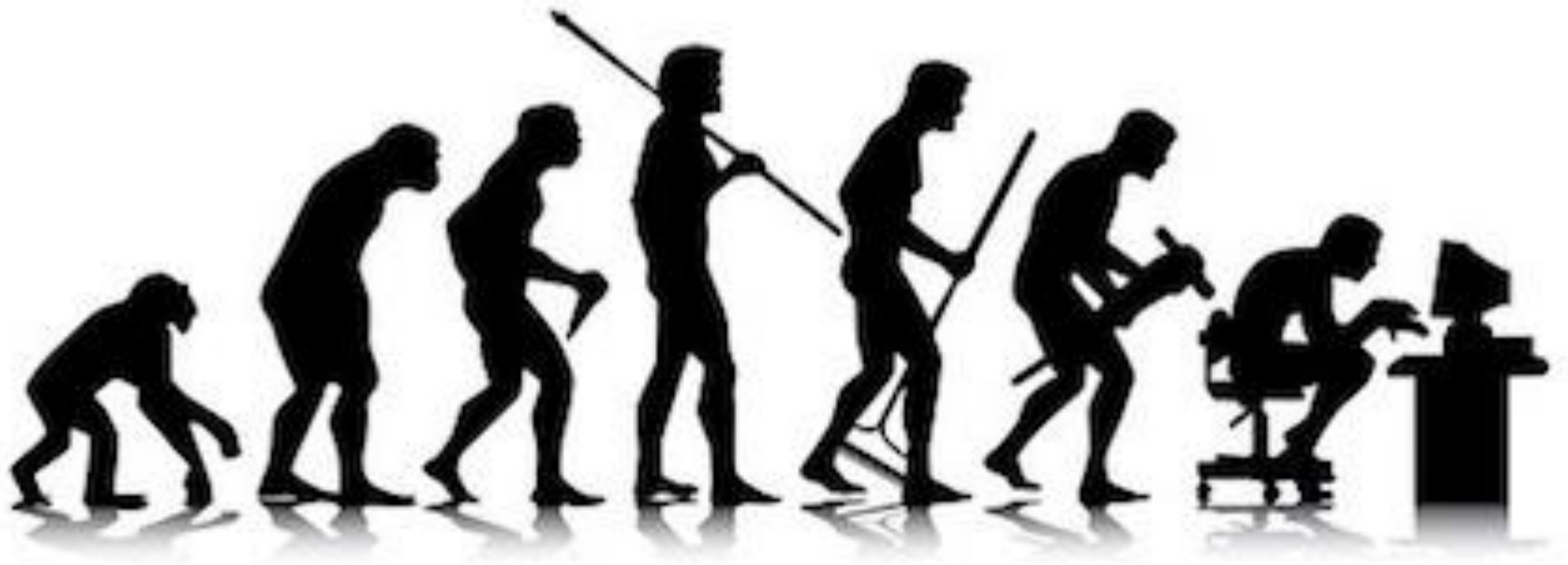
In the beginning there was nothing. God said
“Let there be light!” And there was light.

There was still nothing, but you could see it a
whole lot better.

Ellen Degeneres







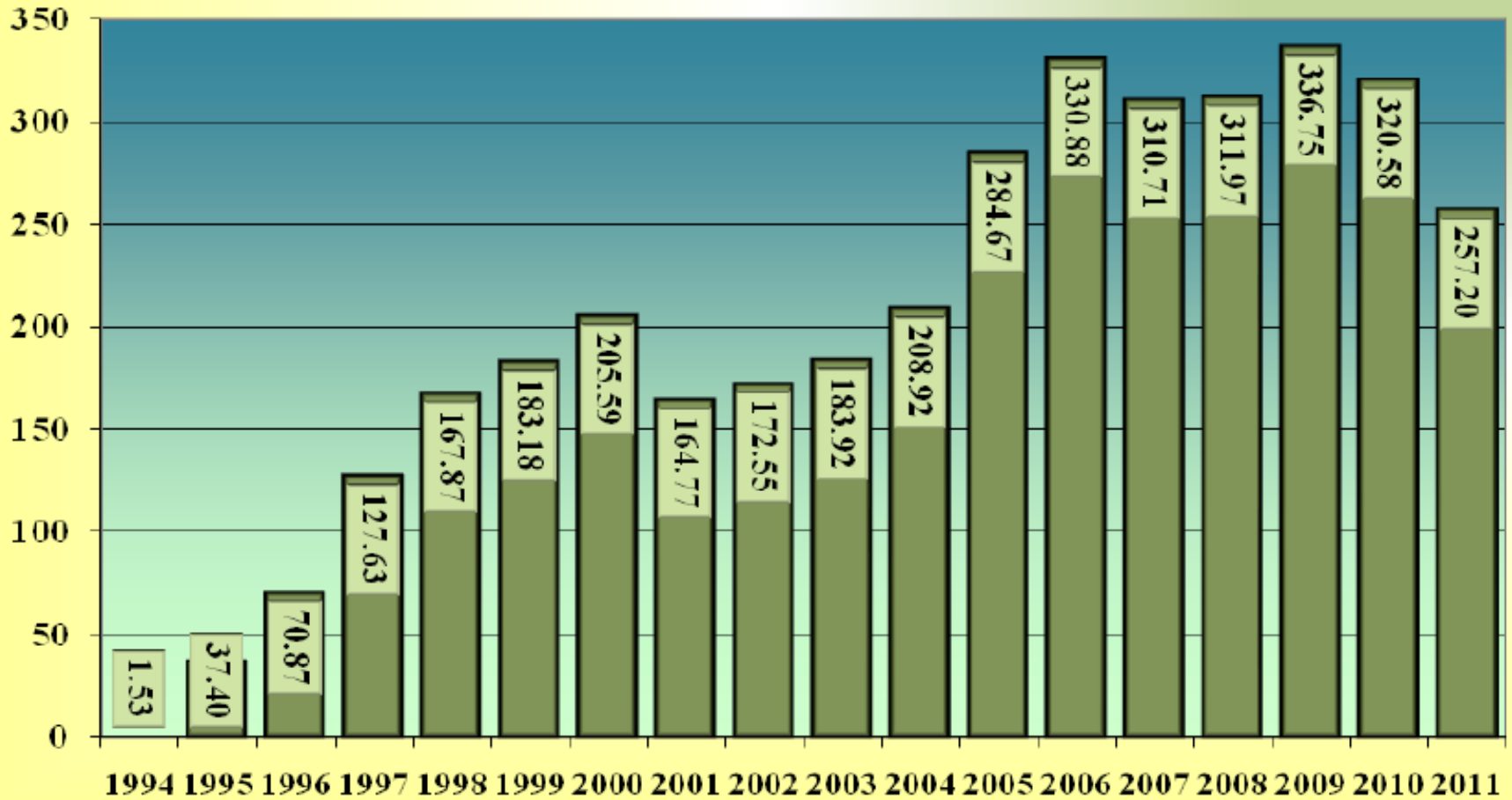


What are we spending?



Annual Totals Paid under REPS 1994 - 2011

€m



.....or about €4bn to date

RDP 2014-2020

- GLAS.....€1,300m
- Organics.....€ 56m
- The Burren.....€ 15m
- Locally Led EIPs.....€ 59m

- ANC.....€1,400m

What do policy makers want?

- We want it to work
- We want it to bring value for money
- We want it to be secure
- We want stakeholder buy-in
- We want it to make life better



Trying different approaches...



Action-based: GLAS

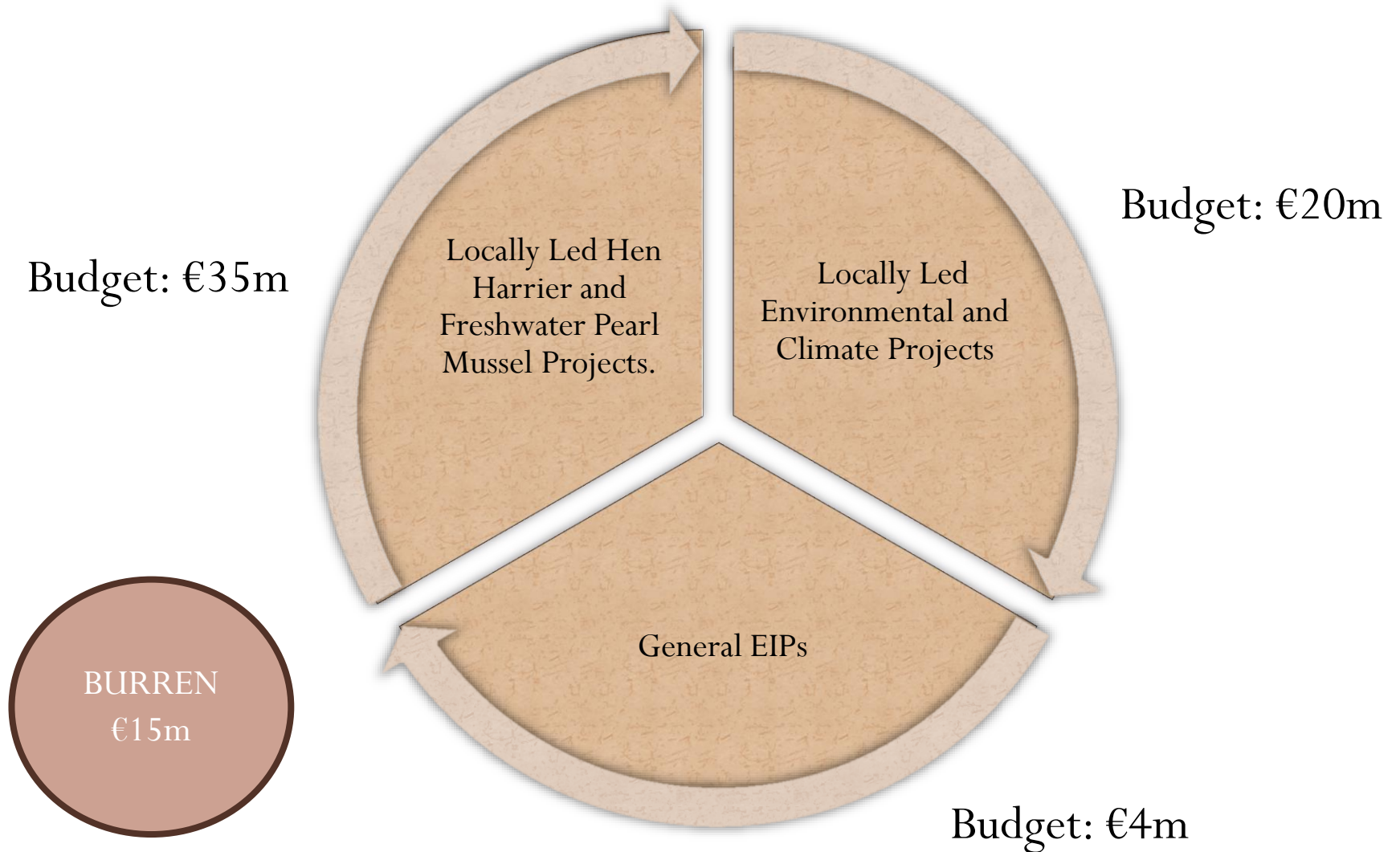
- Latest in a series which began with REPS nearly 25 years ago
- Action-based scheme
- Significant differences to predecessors
- Preferential tiering
- Applied selection
- Pre-defined priorities for each farm
- Intensive farms too

Result-based/Hybrid schemes

- Burren
- Hen Harrier
- Pearl Mussel
- EIP Pilots

Three EIP Sub-Measures – Budget €59m

All are ‘Support for EIP Operational Groups’



The Burren



An 'EIP' that has made the transition to **full AECM**
under Article 28

The Hen Harrier and Pearl Mussel Projects



Thematic EIPs using Article 35. Themes agreed with Commission as part of our RDP. Recruited by competitive tender

Hen Harrier and Pearl Mussel: Objectives

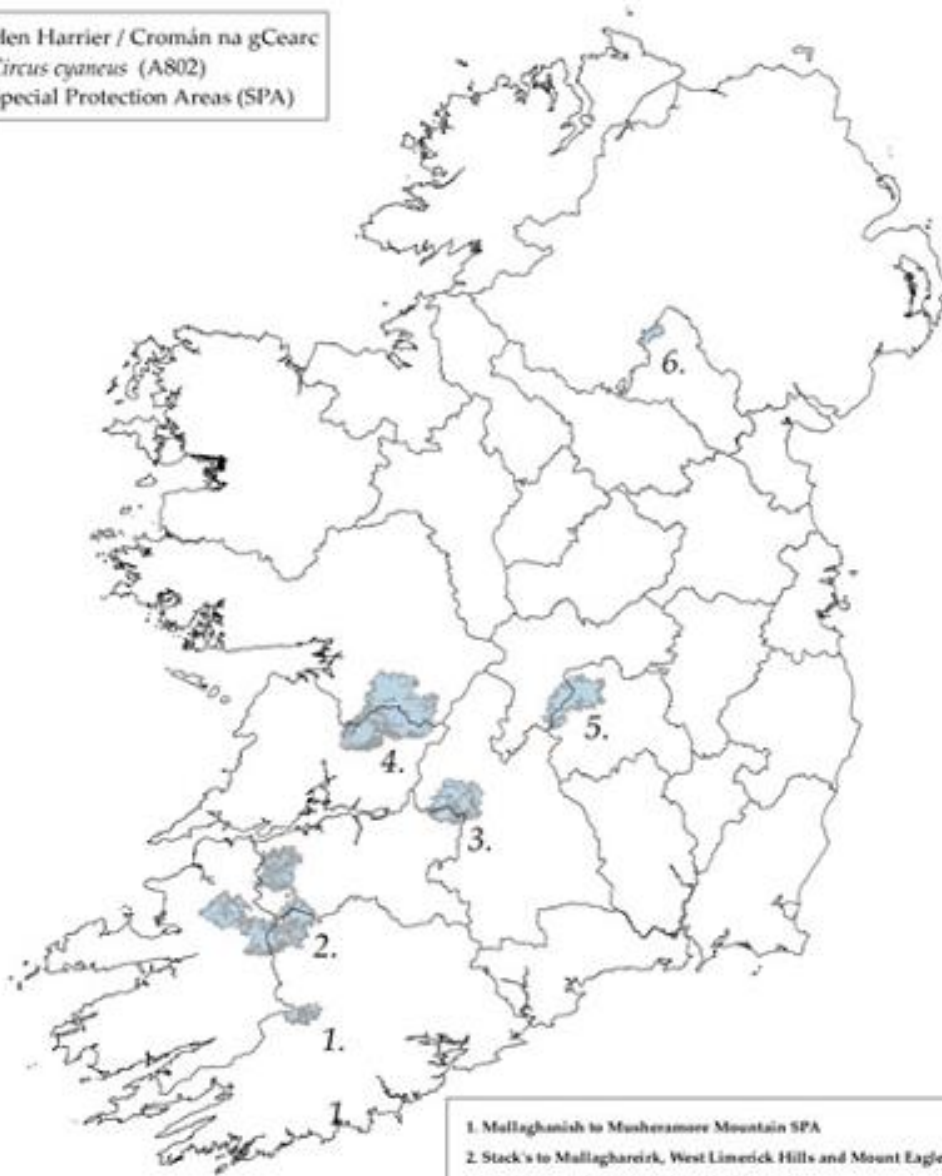


Sustainable
management of habitat.

Fostering positive
relations between local
people and local
biodiversity

Developing effective
locally-led models

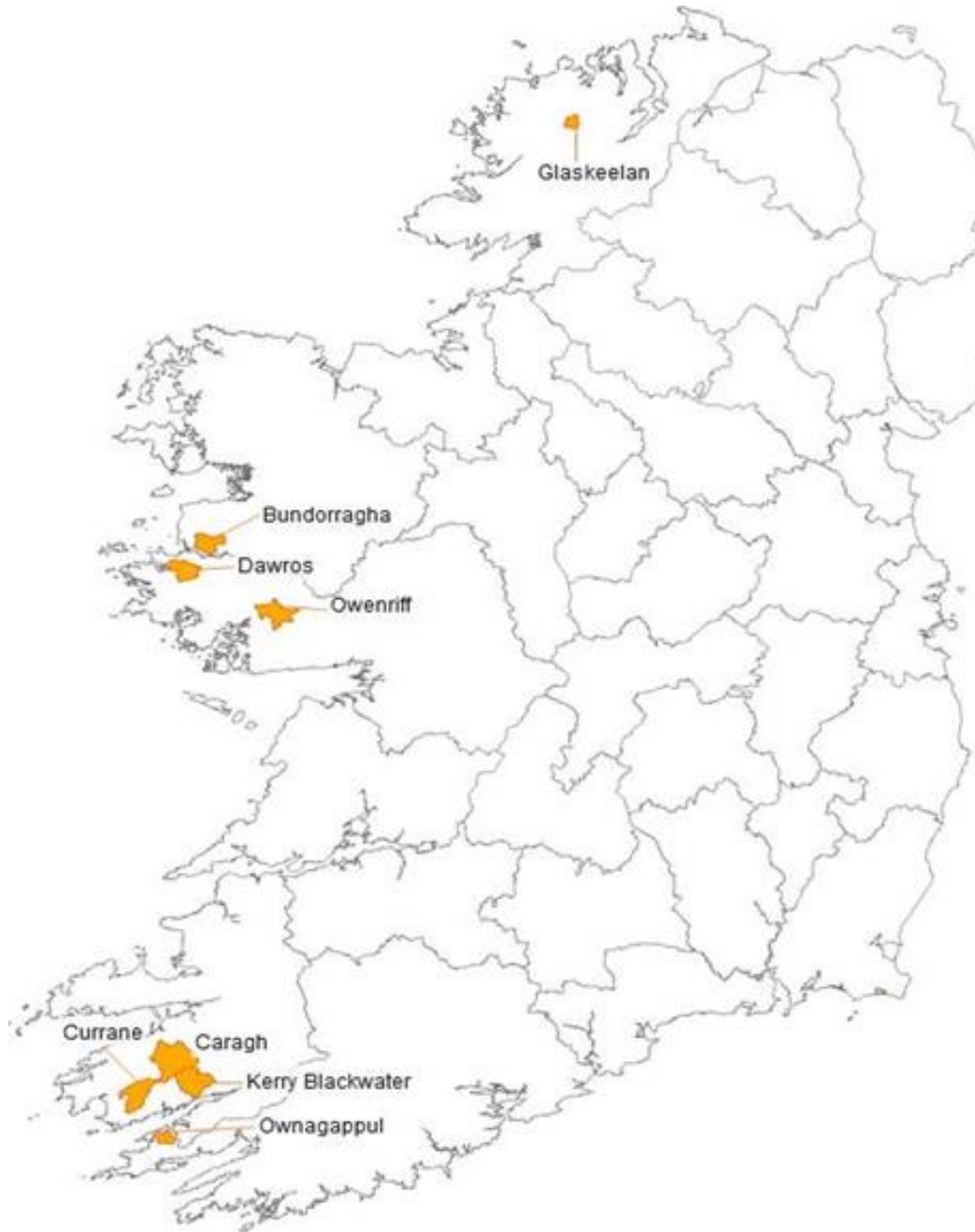
Hen Harrier / Cromán na gCeare
Circus cyaneus (A802)
Special Protection Areas (SPA)



6 Target
Areas

2,000
farmers

1. Mullaghanish to Musheramore Mountain SPA
2. Stack's to Mallaghareirk, West Limerick Hills and Mount Eagle SPA
3. Slievefelim to Silvermines Mountains SPA
4. Slieve Aughty Mountains SPA
5. Slieve Bloom Mountains SPA
6. Slieve Beagh SPA



8 Target
Areas

900
farmers

Challenges

- These are BIG! 1000s of hectares, 1000s of farmers.
- How to deliver while still maintaining an EIP ethos, local identity and local ownership?
- Public procurement
- Learning to let go!



What helps?

- Formalised stakeholder structures
- Using professionals
- Not tied to Jan-Dec model – greater flexibility, which helps phased recruitment.
- Adaptability
- Burren experience

The Open Call



‘Bottom-up’ EIPs using Article 35, recruited by a simple application process, designed to be accessible to all.

Phase 1

- **Competitive approach**
- First call end 2016
- **Very simple application**
 - Operational Group details
 - Project Details
 - Estimated costs
- **Selection Committee reviews and shortlists**



Phase 2

Shortlisted projects funded to produce detailed project plan.

Workshop to help.

5-6 months to produce.

Selection Committee evaluate and shortlist again.



Phase 3

Shortlisted projects funded
for full implementation

Workshop to help.

Up to five years term.

Outreach, PR, education,
review and assessment.



The Odds – Stage 1 Funding



The Odds – Stage 2 funding





Where are we now?

- Burren has completed a second tranche of intake but the transition from EIP to AECM has been difficult.
- Hen Harrier Project Team in place but more work required before the right Pearl Mussel team emerges.
- First Open Call generated 118 ideas. We are now selecting top projects to proceed to Phase 2.

Looking ahead.....



.....it's all about the next RDP

**THANKS
FOR
LISTENING**