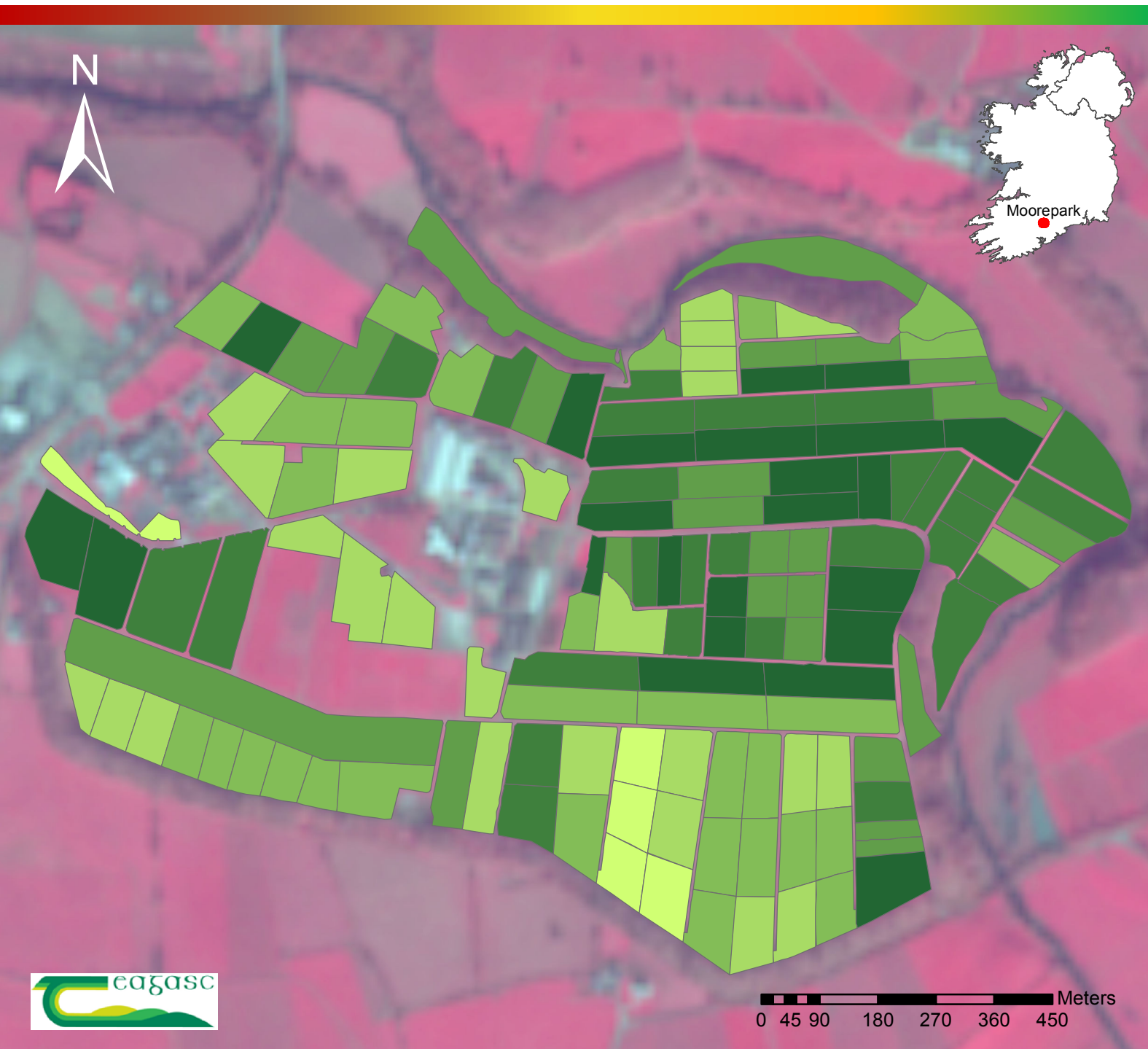








Paddock-scale grass cover for Moorepark, Co. Cork, Ireland on 20th February 2018



The map shows paddock-scale grass cover for Moorepark. Grass cover is represented using NDVI (Normalised difference Vegetation Index) calculated using Sentinel-2B imagery collected on 20th February 2018. Mean NDVI values were calculated for each paddock. Values ranged from 0.61-0.89. NDVI is direct measure of green vegetation. The NDVI algorithm subtracts the red reflectance values from the near-infrared and divides it by the sum of near-infrared and red bands. The background image is standard false color composite image from Sentinel-2B (10 m Spatial resolution).

MEAN

	0.86 - 0.89	<i>High Grass Cover</i>
	0.84 - 0.85	
	0.81 - 0.83	
	0.76 - 0.80	
	0.67 - 0.75	
	0.61 - 0.66	<i>Low Grass Cover</i>

IRENET95 Irish Transverse Mercator

Datasets used:
Sentinel-2B (20th February 2018)

Richa Marwaha
Department of Agrifood Business
and Spatial Analysis