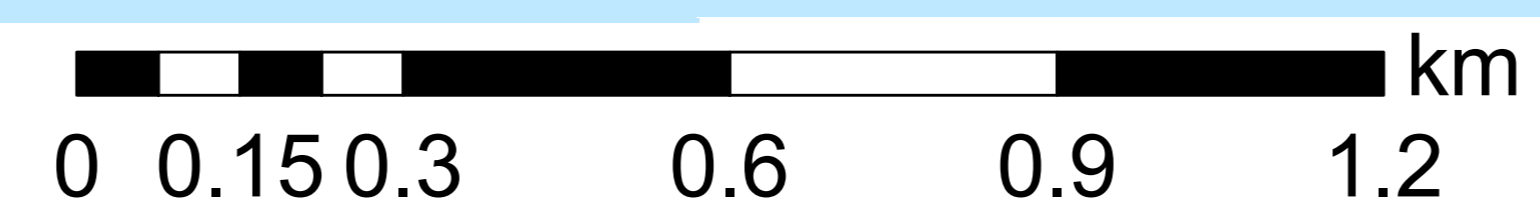
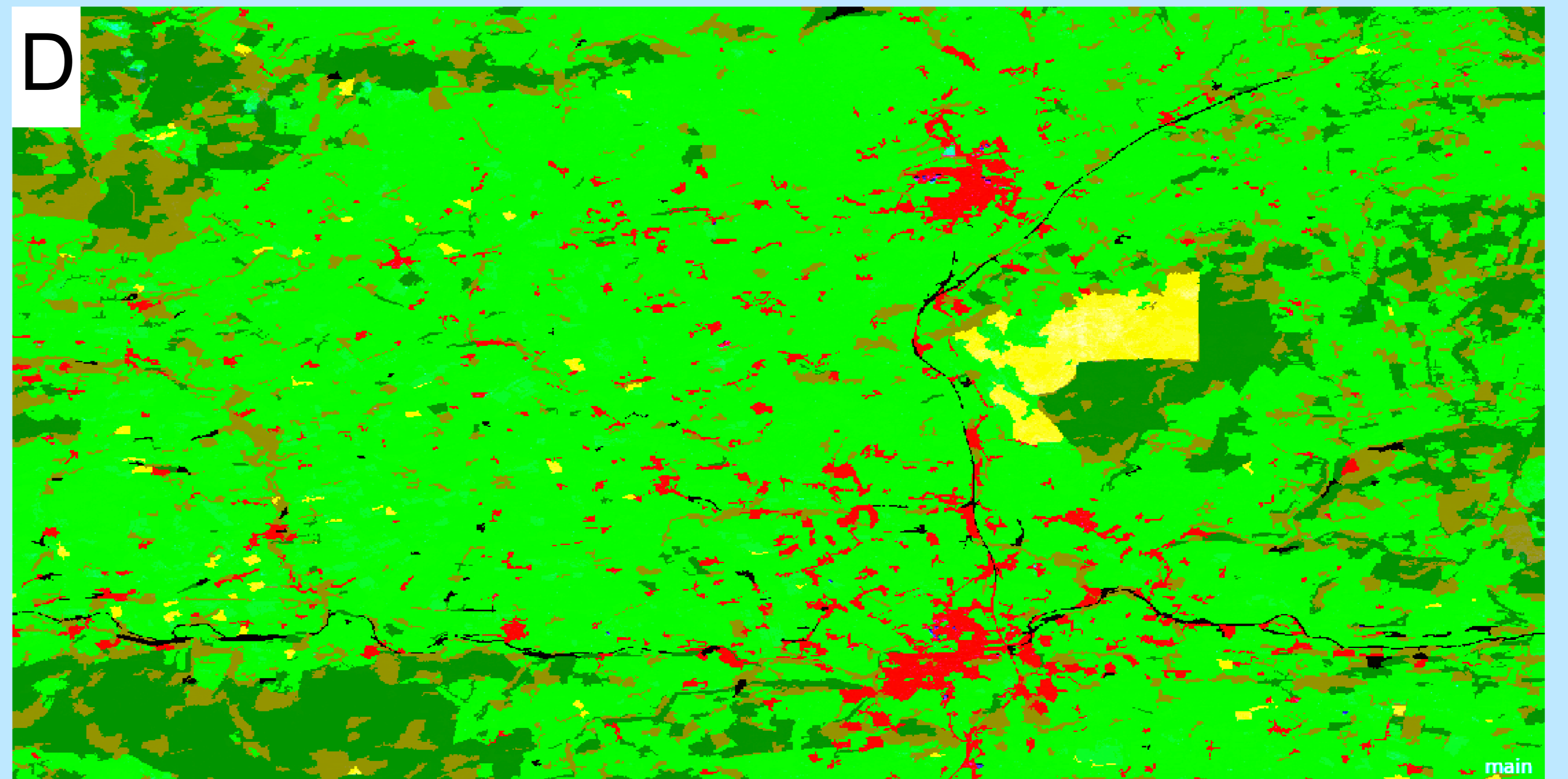
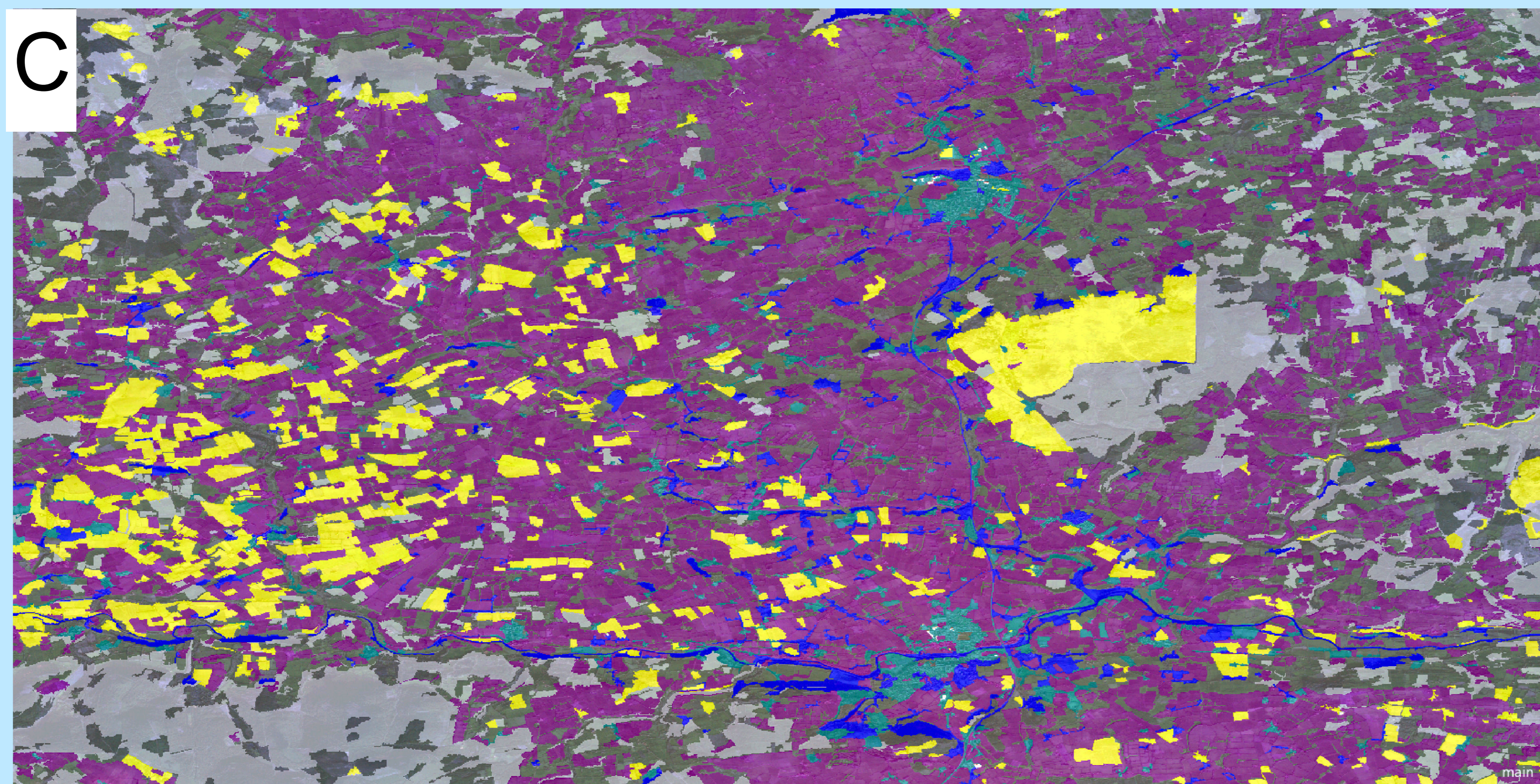
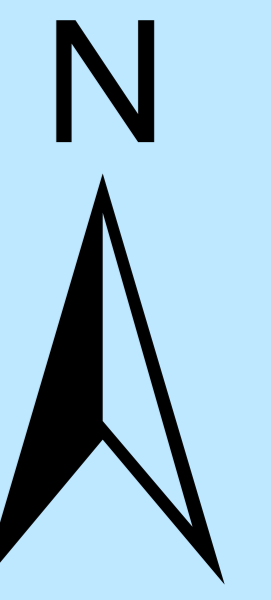
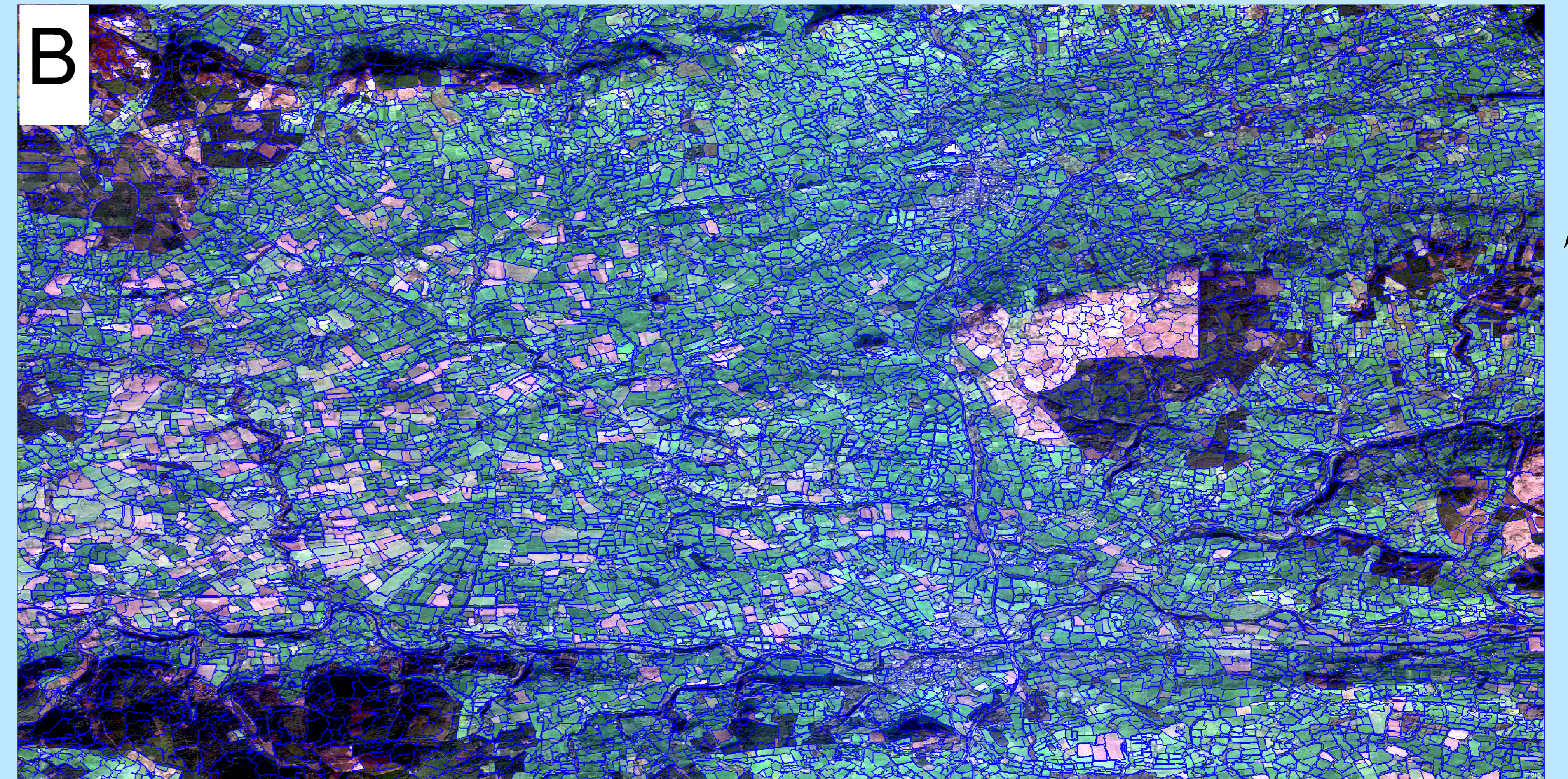
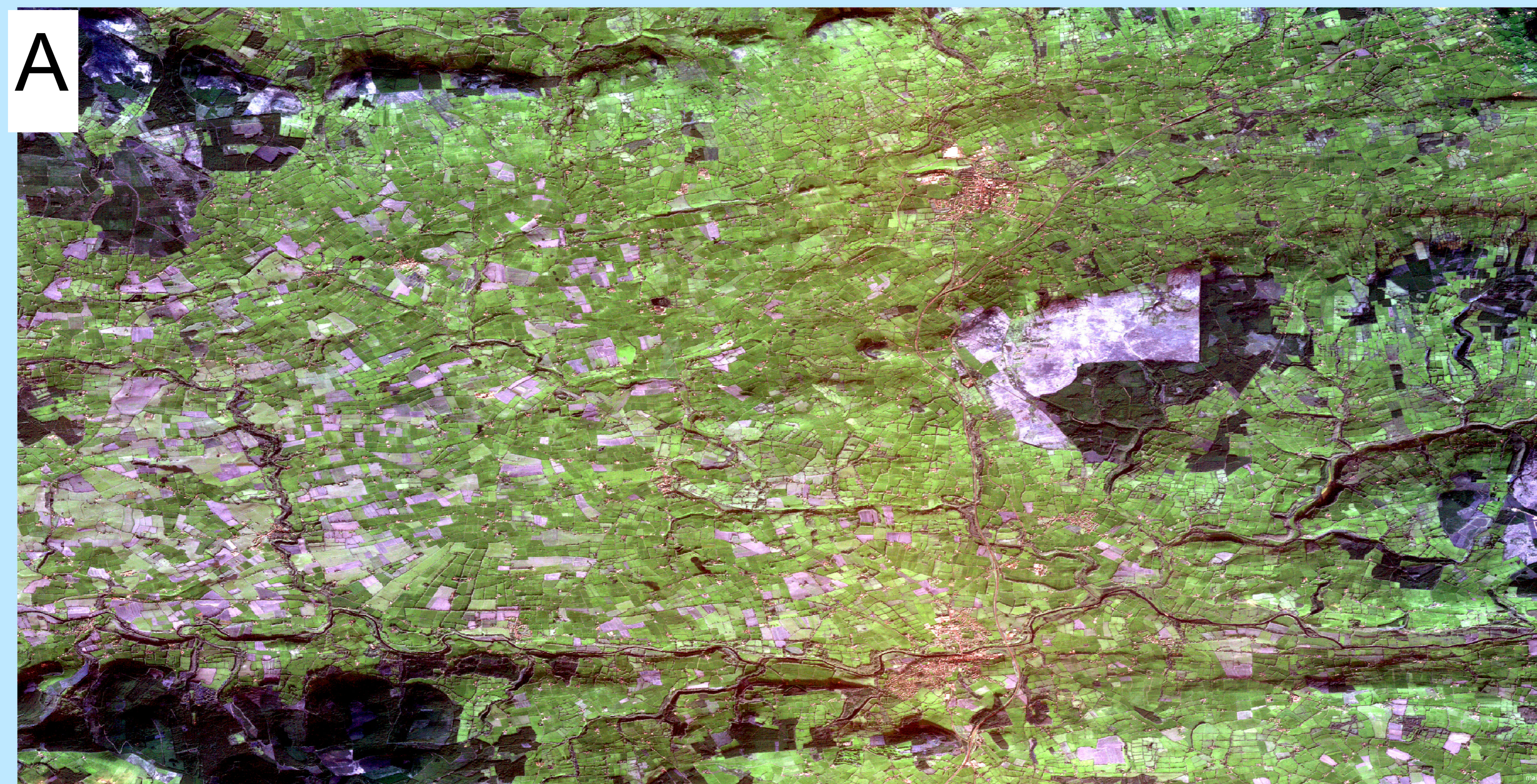
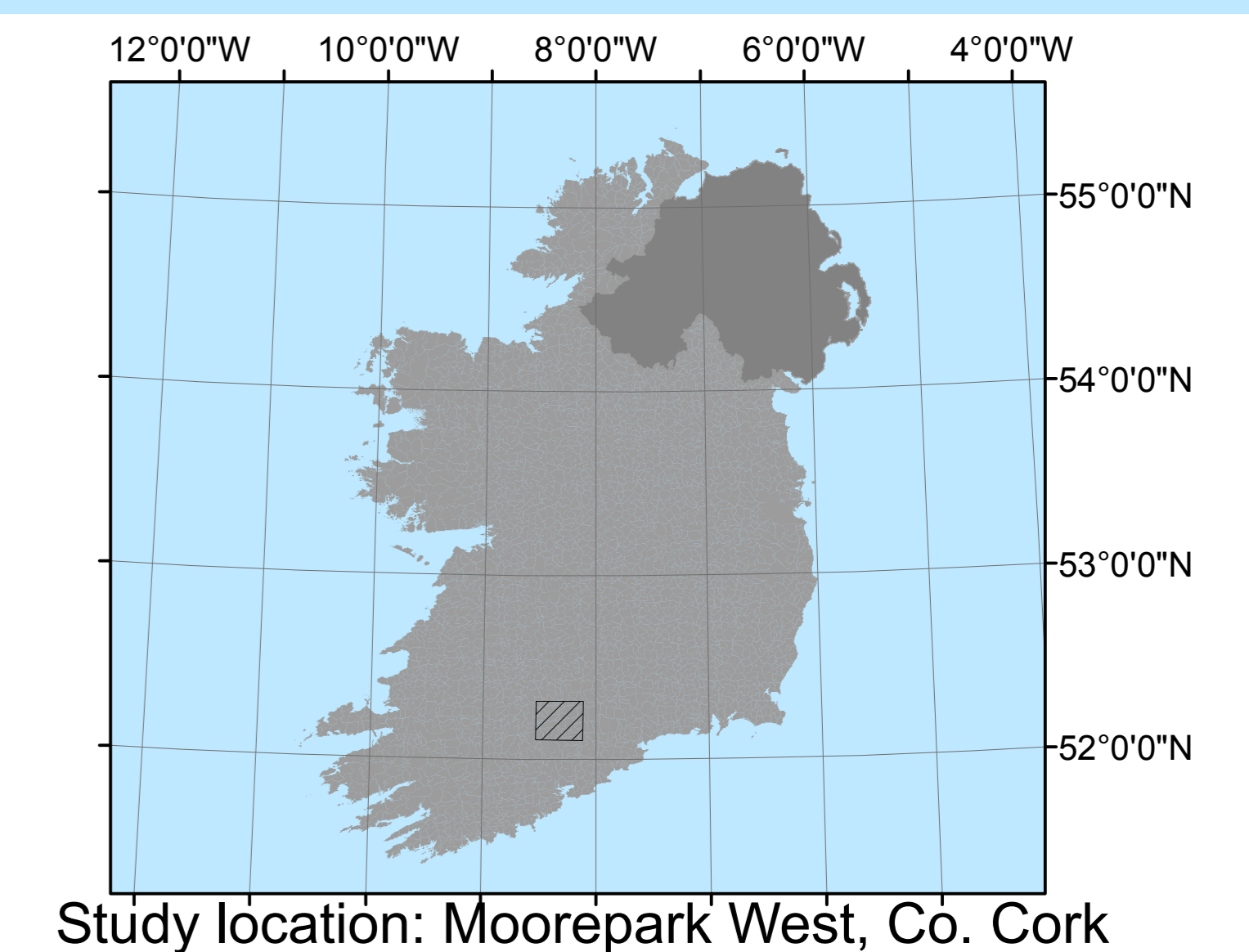


New automatic methods to map farmland using satellite



- Frame 'D' Classes
- Intensified farmland
 - Non-intensified farmland
 - Forest/ Trees
 - Bare soil
 - Settlement
 - Roads and water bodies



The map shows farmland intensification based on object-oriented classification. Four stages of the quick automated classification technique uses a high resolution SPOT 7 image of 1.5 m resolution. Upper left frame is showing an enhanced SPOT 7 satellite image of part of East Cork (Frame 'A'), and a multiresolution segmentation as blue line polygons (Frame 'B'). Frame 'C' depicts an unsupervised classification of the image with seven unnamed classes which were further supervised in two classes of intensified and non-intensified grassland and four other classes (Frame 'D').