

Teagasc Dairy Beef Programme

Update, Johnstown Castle

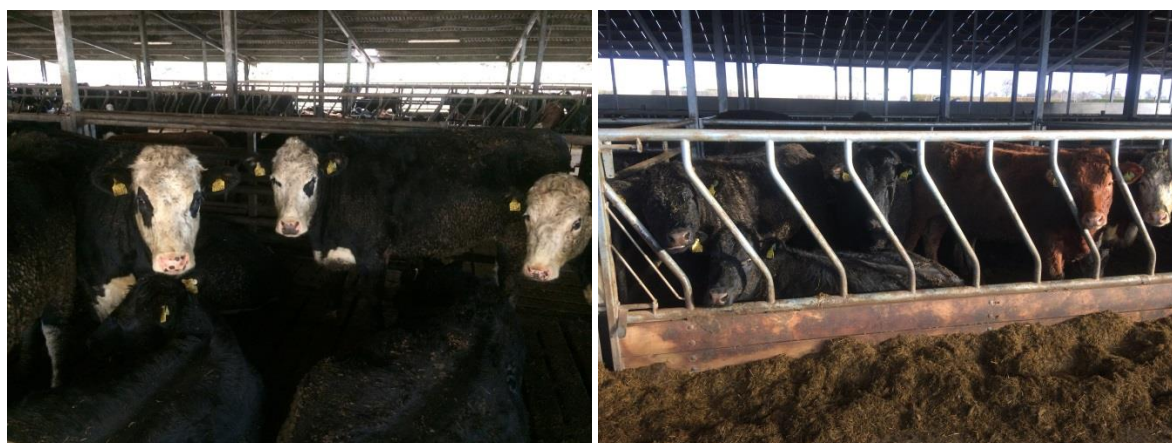
Date of writing: 03rd January 2018

Covering period: November – December 2017

Animal performance:

Older Cattle

- Heifers continue to be fed ad lib silage with 5.55 kg of concentrate (fresh weight). Steers are on *ad lib* grass silage only.
- Cattle were tagged for genotyping on the 8th and 9th of November. They were also weighed, dosed for worms and adult fluke and clipped and drenched for lice.
- From the silage intakes (14-17 and 21-24 Nov), the heifers are eating approximately 7.1 kgDM silage/head/day. With concentrates this equates to 11.4 kg dry matter intake per day. The steers are eating ~8.3 kgDM silage/head/day. The Limousin cattle appear to be eating the least.
- Heifers were body condition scored on the 1st December. The target is to reach a BCS of 3.75 which should correlate to a 3+ fat score in factory. From this 17 heifers (12 HEX, 5 AAX) were killed on the 18th December.

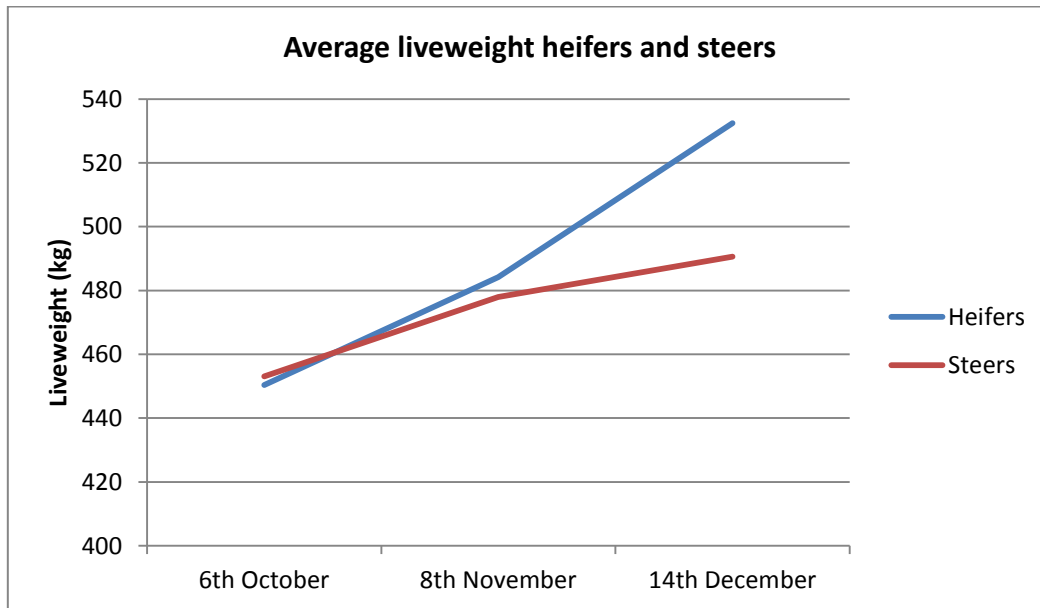


Heifer and Steer liveweight (kg)

		06/10/2017	08/11/2017	14/12/2017
High	Heifers	448	473	523
	Steers	440	475	481
Med	Heifers	463	488	539
	Steers	454	484	501
Low	Heifers	440	493	535
	Steers	465	475	491

Teagasc Dairy Beef Programme

Update, Johnstown Castle



ADG Second Winter			
	High	Medium	Low
Heifer	1.102	1.177	1.358
Steer	0.588	0.607	0.404

Slaughter results

- The first batch of heifers graded well, with good carcass weight and conformation scores.
- Six of the heifers made an R- grade.
- Some heifers were slightly too fat (three 4+, two 5- and one 5=).

	Liveweight	Carcass weight	Age (months)	Kidney & channel fat	Conf Score	Fat Score
Heifers, 18/12/17	574 kg	282.7 kg	21.5	11 kg	O+	4=

Weanlings

- Calves were tagged for genotyping, weighted and dosed for worms and fluke mid-November. They were also clipped and drenched for lice. The calves on slats were sorted by breed within their stocking density groups to facilitate intake analysis in January.
- The feeding programme remains as *ad lib* silage and ~2kg concentrate/head/day.

	Weight at genotyping (Mid-Nov)	8 & 9 th December	ADG first winter
High	202	231	0.689
Medium	215	237	0.644
Low	204	235	0.700
Average	207	234	0.678

Teagasc Dairy Beef Programme

Update, Johnstown Castle

- 52 animals remain under the 'poor' bracket. These are divided into two groups; a pen of sick calves (29) and a pen of poorer performing calves.
- 15 weanlings have died in total, giving a mortality rate of 5.9% which is particularly high.
- The condition of the poorer performing calves has improved over the housing period thus far. Some will be drafted back into their stocking density groups on slats.
- There is still a large difference in liveweight between the average of the good and poor calves (52kg). The lightest calves weigh just 114 and 130kg, while the heaviest calf is 340kg.

	24/10/2017	23/11/2017	9/12/2017
Good	210	216	244
Poor	170	168	192
Difference	40	48	52