

Teagasc Dairy Beef Programme

Update, Johnstown Castle

Date of writing: 6th July 2017

Covering period: May-June 2017

Animal performance:

Yearlings

- The yearlings are performing well during their second season at grass, averaging 0.95 kg/day.

	16/05/2017 Liveweight (kg)	13/06/2017 Liveweight (kg)	ADG second season
High	330	360	0.93
Medium	343	369	0.92
Low	341	370.5	1.00
Total Average	336	366	0.95



26 Month Steer System

Liveweight and ADG

- The final 54 steers were killed on the 6th June, after being fed 2.5-2.7kg concentrates/head/day for the finishing period.

	16/05/2017 Liveweight (kg)	02/06/2017 Liveweight (kg)	ADG third season
High	607	619	1.29
Medium	616	629	1.41
Low	607	621	1.29
Total Average	612	623	1.33

Teagasc Dairy Beef Programme

Update, Johnstown Castle

Slaughter performance

- Skeletal measurements and back fat scans taken on the 2nd June.
- Skeletal measurements, kidney and channel fat and carcass pH and temperatures recorded on day of slaughter.
- Average kidney and channel fat was 11.8kg (max 19kg, min 5.18kg).

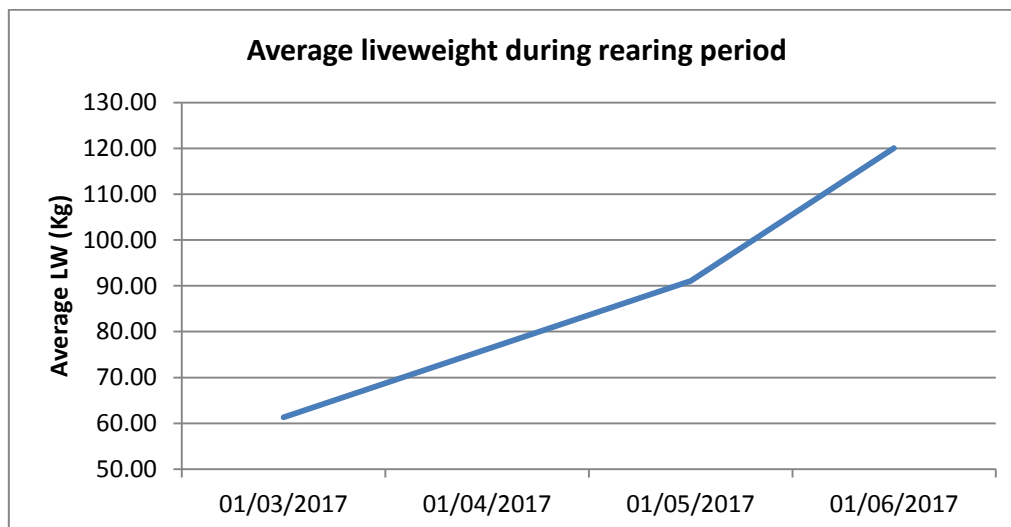


	Carcass weight (kg)	Conformation score	Fat score
High	332	O=	3+
Medium	333	O=	3+
Low	326	O=	3+

- 20 out of 54 carcasses received a 4- fat score, with two achieving 4= and two 4+.
- 24 carcasses achieved a condition score of O+ or greater.
- 70% of the carcasses received the BQAS bonus.

2017 Calves

- First group of calves (175) arrived on the 20th June. Last 75 calves to arrive 7th July.
- Average weight on arrival was 120kg (min 79, max 183.5. Range 104.5).
- Average birth date is 20/02/2017.
- Calves performed well during rearing the period, see below chart from ABP monthly weighings on the rearer farms.



Teagasc Dairy Beef Programme

Update, Johnstown Castle

Health:

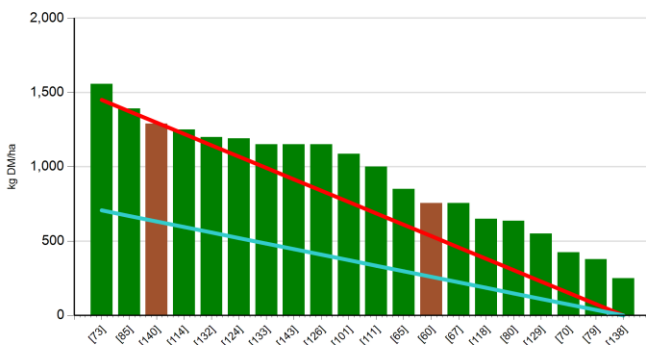
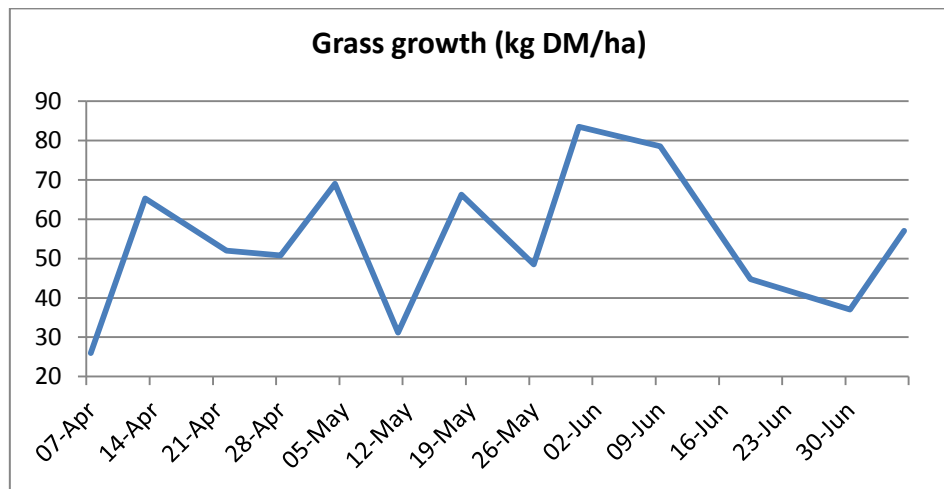
2017 Calves

- All calves given Huskvac lungworm vaccine to facilitate the forthcoming parasitology trial. Final dose was administered two weeks before calves' arrival into Johnstown.
- First group of calves administered a pneumonia vaccine on the 6th July (~2 weeks after arrival).

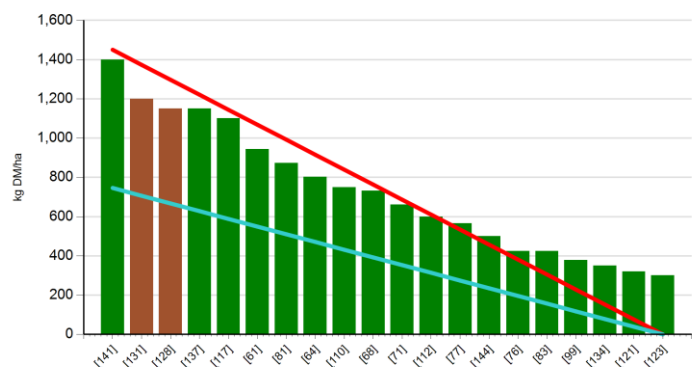
Grassland management:

- Grass growth declined in June due to a prolonged dry spell. Growth rates are beginning to recover.
- Silage was cut 2/3rd June, averaging 20.05% DM.
- Surplus silage cut and baled when paddocks become too strong.
- Animals grazing swards of ~1450kg DM/ha.

Farm cover, kg DM/ha				
	31/05/2017	09/06/17	19/06/17	30/06/17
High	934	1201	891	910
Medium	1038	1146	841	749
Low	915	1147	775	930



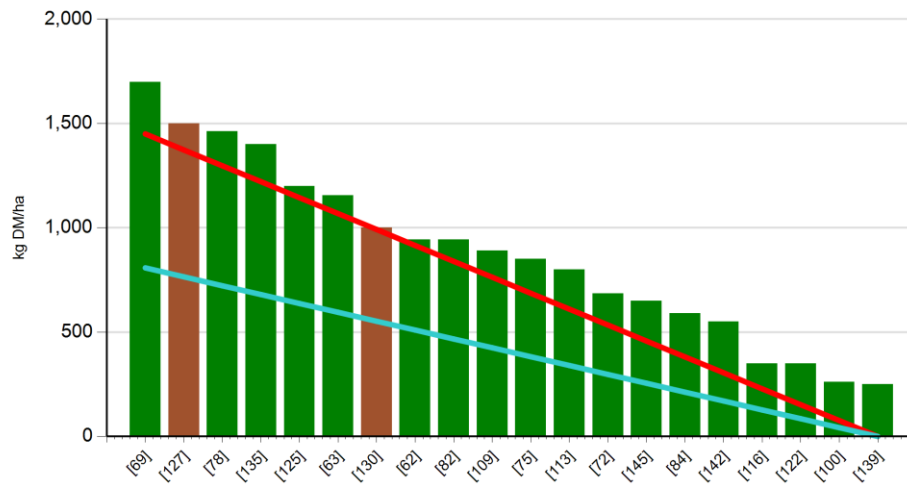
Low, 30/06/2017



Medium, 30/06/2017

Teagasc Dairy Beef Programme

Update, Johnstown Castle



High, 30/06/2017