

Teagasc Johnstown Castle Teagasc/ABP Dairy Beef Research Programme

Update: 19-06-2017

- Grass supply tightening due to the dry weather over the last number of days.
- Yearlings continue to graze swards (~1500kgDM/ha) without concentrate supplementation.
- 26 month steers slaughtered 6th June.

Animal Performance

26 Month steers

- Pre-slaughter back fat scanning and liveweight measurements taken the 2nd June, with slaughter on the 6th June.
- The animals achieved higher than expected fat grades; out of 54 carcasses, 20 received a 4-, with two achieving 4= and two 4+.
- 24 carcasses achieved a condition score of O+ or greater.
- 70% of the carcasses received the BQAS bonus.

	Liveweight (02/06/2017)	ADG (third season@grass)	Carcass weight	Conformation score	Fat score
High	619	1.29	332	O=	3+
Medium	629	1.41	333	O=	3+
Low	621	1.29	326	O=	3+

Yearlings

13/06/2017	Liveweight	ADG (since previous weighing)
High	360	1.09
Medium	369	0.88
Low	371	1.05

Grassland Management

- Silage pre-cuts taken on the 30th May. Silage cut the 2/3rd June.
- Average DM% of the paddocks was 20.05%, with a range of 13.7% to 26%.
- Four strong paddocks cut for baled silage on the 13th of June.

Latest grass wedge

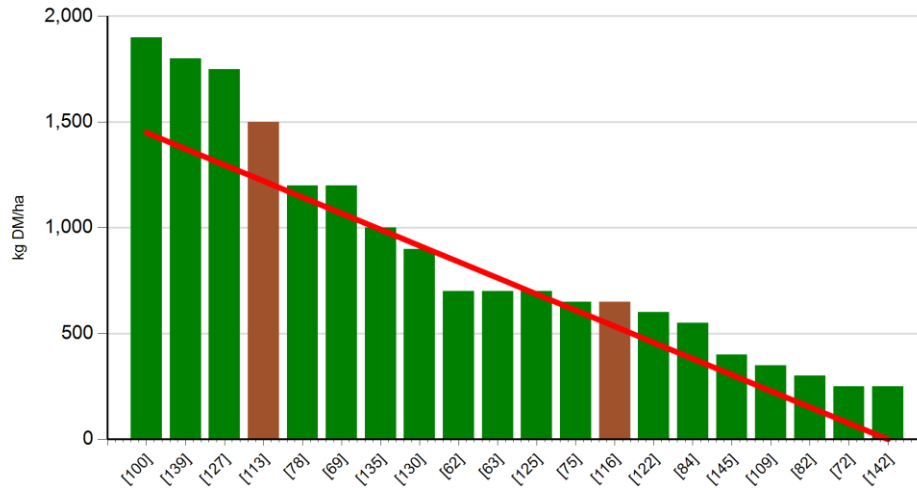
- Rotation length: 21 days
- Livestock: 72 1-2 year old (310kg).

Date of cover: 19-06-2017	High	Medium	Low
Farm Cover (kg DM/ha)	891	841	775
Growth/ha (kg DM/ha/day)	58	60	29
Demand/ha (kg DM/ha/day)	31	30	26
Days ahead	29	28	30
Silage	0	0.75 ha	0

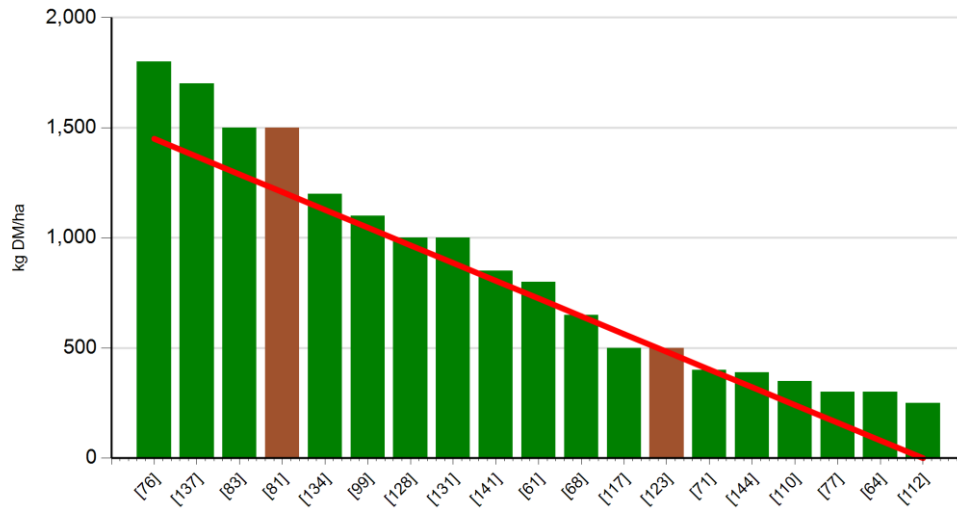
Teagasc Johnstown Castle

Teagasc/ABP Dairy Beef Research Programme

High SD Farmlet



Medium SD Farmlet



Low SD Farmlet

