

## Ballyhaise Weekly Farm Notes - Monday 14/04/2009

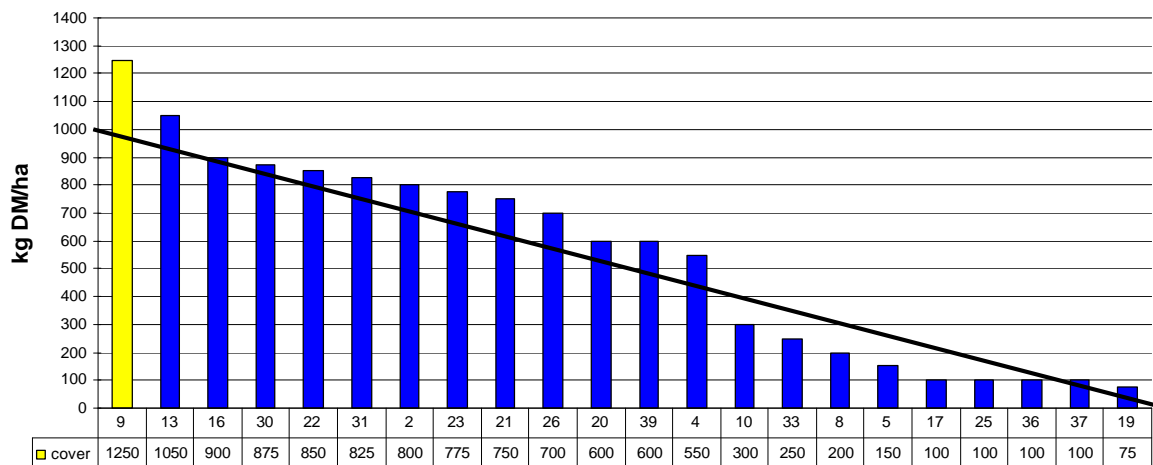
### A. Critical Issues

1. **Don't poach**
2. **Maximise cow intakes of pasture and maintain residual at 3.5cm**
3. **Ensure cows are getting better fed each week**

### B. On farm situation

1. Soil temperature today is 12.4°C, similar to last week
2. Total weekly rainfall is 28.5mm
3. Average growth was 29kgDM/ha, (17% DM)
4. Grass supply is above target (181 vs. 150/cow)
5. Farm feed wedge (14/4/09)

**Farm cover 560kg DM/ha (181/LU)**



6. At a stocking rate of 3.1 cows/ha, rotation length of 19 days and grass allowance of 15kgs the pre-grazing yield should be 1000kgsDM/ha. The wedge is showing a surplus beginning to appear we will be closing paddocks for silage by next week. Paddocks 30 and 31 received slurry late so we will skip these if possible.
7. Post grazing height on the last paddock grazed was 3.5cm.
8. Total N application to date is 37kg N/ha. Slurry from the out wintering pad has been applied to 37% of the entire grazing area post grazing to date. We will start applying 27 units of N to grazed paddocks this week. Paddocks reseeded last Autumn will also receive P and K.
9. Pre-breeding heat detection is continuing. Breeding season will commence on the 5<sup>th</sup> of May.
10. 95% of the herd calved to date (expected mean calving date is 4<sup>th</sup> March).
11. Average milk yield is 20.06kg at 4.59% fat and 3.23% protein (1.56kg MS/cow), lactose 4.71%, SCC 363k, TBC 8k.

**C. Critical short term actions :**

- Grass allocated every 12 hours.
- On/off grazing since Thursday 9<sup>th</sup>.
- Cows straight to grass as they calve.
- Calmag dusting of paddocks.
- Concentrate removed.

[www.agresearch.teagasc.ie/moorepark/](http://www.agresearch.teagasc.ie/moorepark/)

## Dairy Production Research in the Northeast

### Objective:

To increase the profitability of milk production per hectare in the BMW region through improved pasture management and utilisation in combination with genetic improvement using the Economic Breeding Index.

Year	2004	2007	2008
Grazing season (days)	226	271	280
Herd EBI (€)	28	51	55
Stocking Rate (Cows/ha)	2.2	2.6	2.9
Concentrate (kg/cow)	700	400	250
Milk (kg/ha)	12,381	11,890	13,340
Milk Solids (kg/ ha)	928	931	1,150
6 week pregnancy rate (%)	38	55	65
Farm Profit (30 ha)	37,417	56,182	-

Week:14/04/09	HG system	HS system
<b>Stocking rate (cows/ha)</b>	<b>3.1</b>	<b>4.6</b>
Milk yield (kg/cow/day)	20.06	21.37
% Fat	4.32	4.31
% Protein	3.34	3.24
% Lactose	4.78	4.85
Milk solids (kg/cow/day)	1.51	1.63
Supplement (kg/cow/day)		
Concentrate	0.25	3.0
Silage	0	5
<b>Cumulative</b>		
Milk yield (kg/cow)	896	873
% Fat	4.74	4.58
% Protein	3.38	3.27
% Lactose	4.65	4.68
Milk solids (kg/cow)	73	70
Bodyweight (kg)	421	434
Body Condition Score	2.92	2.93
Supplement (kg/cow)	123	168
Mean Calving Date		4 <sup>th</sup> March



