

Ballyhaise Weekly Farm Notes - Monday 26/4/2010

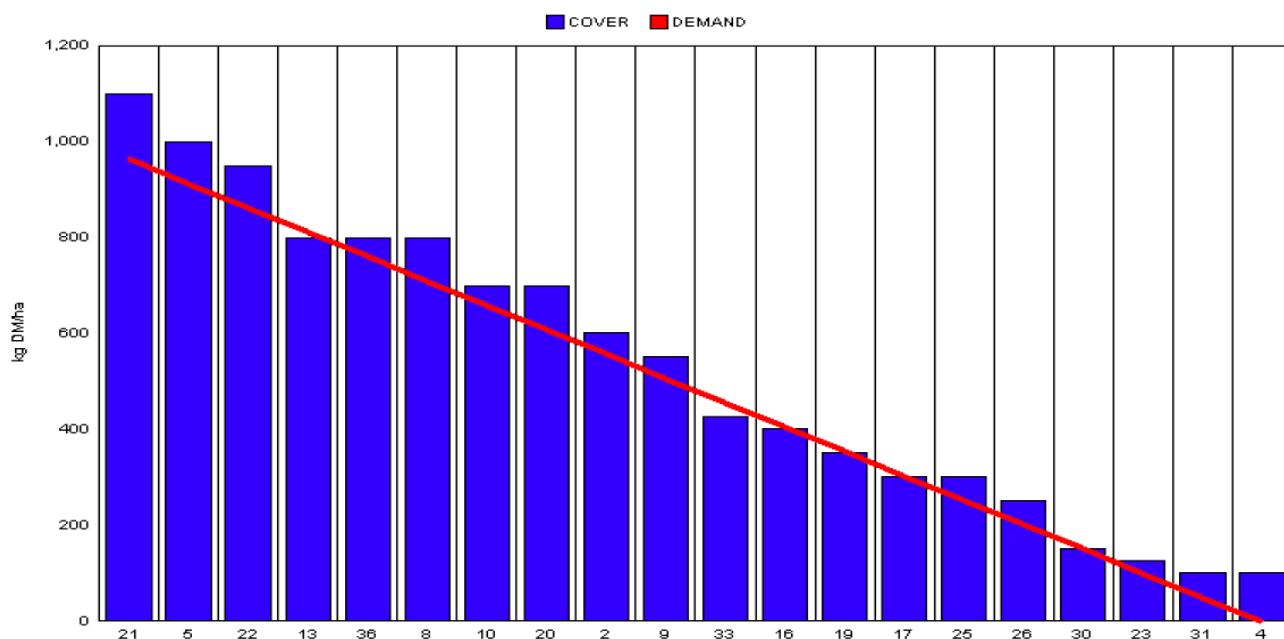
A. Critical Issues

1. Maximise cow intakes of pasture and maintain residual at 3.5cm.
2. Ensure cows are getting better fed each week.
3. Treat high SCC cows and reduce risk of cross infection.

B. On farm situation

1. Soil temperature today is 10.5°C.
2. Total weekly rainfall is 2.4mm.
3. Average growth was 43kgDM/ha/day, (16% DM).
4. Feeding 4kg of concentrate.
5. Farm feed wedge (26/4/10).
- 6.

Teagasc, Dairy Production Department, Moorepark		GrazePlan - Grass Measurement Report	
Group : TEAGASC RESEARCH FARMS		Date Produced 28-APR-10	
Farm : Ballyhaise Farm		Ballyhaise BMW region systems comparison	
Date : 26-APR-10		Treatment : 3.1 stocking rate	
Rotation Length :	21	Farm Cover (kg DM/ha) :	491
Grass Allocation /cow (kg grass dry matter/LU	13	Farm Cover (kg DM/LU) :	139
Concentrate Fed (kg/cow) :	4	Current Monthly Fertilizer Rate (kg/ha) :	
Silage Fed (kg DM/cow) :	0	Stock Rate (LU/ha) :	3.54
N Application Rate (units/acre) :		Growth Rate :	43
N Application Rate (kg/ha) :		Farm Demand (kg DM/LU/day) ::	46
Residual Height :	3.5	Target pregrazing yield (kg DM/ha) :	965
Total Livestock :	59		



7. Paddocks 37 and 39 have been removed from rotation for reseedling. Area has been sprayed off and will be ploughed this week weather permitting. This means that the stocking rate on the area is now 3.54 cows/ha.
8. Feeding 4kg of concentrate to maintain intake at 17kg DM / cow per day. Growth is just about matching demand so we will remain at this feeding level until growth rates improve.

9. We are allocating 1/21st of the farm each day (0.8 ha). At PGY of 1000kgs and 59 cows this means a grass intake of 13.5 kgs/cow/day.
10. 60 cows calved out of 62 (96%) to date.
11. Cows were tail painted on the 10th of April. Mating start date is the 10th of May for the cows and the 5th of May for the heifers. We are recording heats as seen and paint is not being topped up until breeding begins. Any cows which have not cycled by the 5th of May (tail paint still on) will be examined by the vet and appropriate action taken.
12. Average milk yield is 24.79kg at 3.85% fat and 3.39% protein (1.8kg MS/cow), lactose 4.81%, SCC 168k, TBC 6k.
13. Three of the six cows treated for high SCC have responded to treatment and are back in the tank. The other three cows will get another course of treatment and will be milked separately from the rest of the herd.

C. Critical short term actions :

- Allocating grass in 24hr blocks.
- Cows calved on paddocks to reduce incidence of mastitis.
- Observe pre-breeding heats.
- Ensure bulling heifers and calves get fresh grass every 2-3 days.

www.agresearch.teagasc.ie/moorepark/



**Dairy Production Research in the Northeast
Objective:**

To increase the profitability of milk production per hectare in the BMW region through improved pasture management and utilisation in combination with genetic improvement using the Economic Breeding Index.

Year	2004	2007	2008
Grazing season (days)	226	271	280
Herd EBI (€)	28	51	55
Stocking Rate (Cows/ha)	2.2	2.6	2.9
Concentrate (kg/cow)	700	400	250
Milk (kg/ha)	12,381	11,890	13,340
Milk Solids (kg/ ha)	928	931	1,150
6 week pregnancy rate (%)	38	55	65
Farm Profit (30 ha)	37,417	56,182	-

Week:25/04/10	HG system	HS system
Stocking rate (cows/ha)	3.1	4.6
Milk yield (kg/cow/day)	24.79	22.78
% Fat	3.85	4.19
% Protein	3.39	3.41
% Lactose	4.81	4.84
Milk solids (kg/cow/day)	1.8	1.74
Supplement (kg/cow/day)		
Concentrate	4	6
Silage	0	3
Cumulative		
Milk yield (kg/cow)	1062	1058
% Fat	4.64	4.69
% Protein	3.35	3.32
% Lactose	4.78	4.78
Milk solids (kg/cow)	7683	84
Bodyweight (kg)	460	443
Body Condition Score	3.0	2.9
Supplement (kg/cow)		
Concentrate	239	284
Silage to milking cows (kg DM/cow)	137	120
Maize (kg DM/cow)	0	114
Conserved silage (kg DM/cow)	817	126
Total silage fed (kg DM/cow)	930	1233