

Ballyhaise Weekly Farm Notes - Monday 3/5/2010

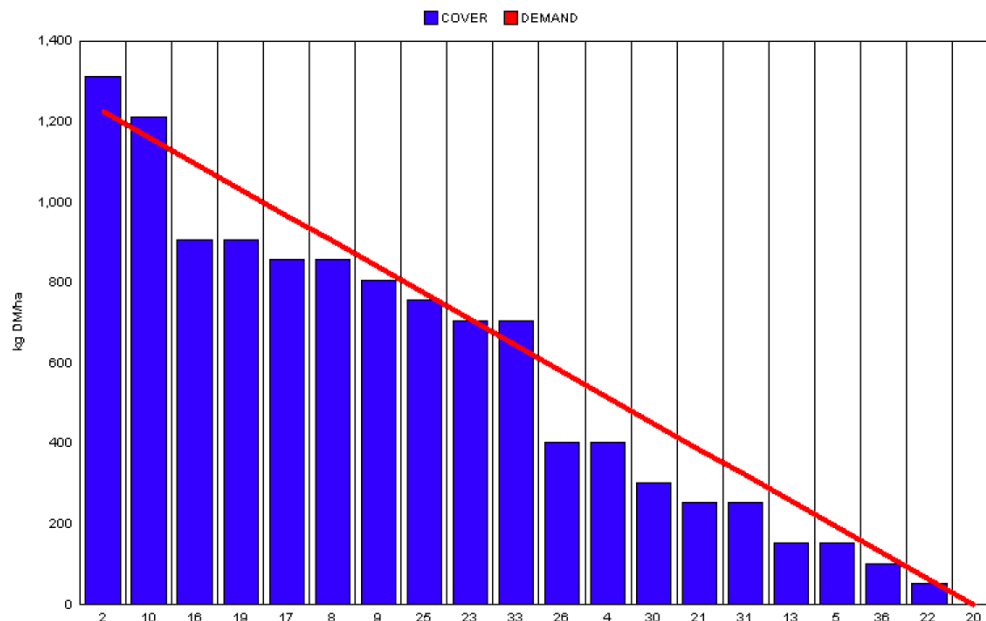
A. Critical Issues

1. Maximise cow intakes of pasture and maintain residual at 3.5cm.
2. Ensure cows are getting better fed each week.
3. Treat high SCC cows and reduce risk of cross infection.

B. On farm situation

1. Soil temperature today is 11.5°C.
2. Total weekly rainfall is 17.9mm.
3. Average growth was 60kgDM/ha/day, (18% DM).
4. Feeding 1kg of concentrate.
5. Farm feed wedge (3/5/10).

Teagasc, Dairy Production Department, Moorepark		GrazePlan - Grass Measurement Report	
Group : TEAGASC RESEARCH FARMS		Date Produced 04-MAY-10	
Farm : Ballyhaise Farm		Ballyhaise BMW region systems comparison	
Date : 03-MAY-10		Treatment : 3.1 stocking rate	
Rotation Length :	21	Farm Cover (kg DM/ha) :	557
Grass Allocation /cow (kg grass dry matter/LU)	16	Farm Cover (kg DM/LU) :	152
Concentrate Fed (kg/cow) :	1	Current Monthly Fertilizer Rate (kg/ha) :	
Silage Fed (kg DM/cow) :	0	Stock Rate (LU/ha) :	3.66
N Application Rate (units/acre) :		Growth Rate :	60
N Application Rate (kg/ha) :		Farm Demand (kg DM/LU/day) ::	58
Residual Height :	3.5	Target pregrazing yield (kg DM/ha) :	1228
Total Livestock :	61		



6. Paddocks 37 and 39 have been removed from rotation for reseeded. Area has been ploughed and tilled and will be sown this week. We are sowing half the area with Tyrella monoculture and the other half with Abermagic. These are both late heading diploids. The area is prone to flooding so persistence is our first priority. This means that the stocking rate on the area is now 3.66 cows/ha.

7. Feeding 1kg of concentrate to maintain intake at 17kg DM / cow per day. Growth is just about matching demand so we will remain at this feeding level until growth rates improve.

8. We are allocating 1/21st of the farm each day (0.8 ha). At PGY of 1250kgs and 61 cows this means a grass intake of 16.3 kgs/cow/day.
9. 61 cows calved out of 62 (98%) to date.
10. Cows were tail painted on the 10th of April. Mating start date is the 10th of May for the cows and the 5th of May for the heifers. We are recording heats as seen and paint is not being topped up until breeding begins. Any cows which have not cycled by the 5th of May (tail paint still on) will be examined by the vet and appropriate action taken.
11. Average milk yield is 25.61kg at 4.20% fat and 3.38% protein (1.93kg MS/cow), lactose 4.82%, SCC 168k, TBC 6k.
12. Three of the six cows treated for high SCC have responded to treatment and are back in the tank. The other three cows will get another course of treatment and will be milked separately from the rest of the herd.

C. Critical short term actions :

- Allocating grass in 24hr blocks.
- Cows calved on paddocks to reduce incidence of mastitis.
- Observe pre-breeding heats.
- Ensure bulling heifers and calves get fresh grass every 2-3 days.

www.agresearch.teagasc.ie/moorepark/



Dairy Production Research in the Northeast

Objective:

To increase the profitability of milk production per hectare in the BMW region through improved pasture management and utilisation in combination with genetic improvement using the Economic Breeding Index.

Year	2004	2007	2008
Grazing season (days)	226	271	280
Herd EBI (€)	28	51	55
Stocking Rate (Cows/ha)	2.2	2.6	2.9
Concentrate (kg/cow)	700	400	250
Milk (kg/ha)	12,381	11,890	13,340
Milk Solids (kg/ ha)	928	931	1,150
6 week pregnancy rate (%)	38	55	65
Farm Profit (30 ha)	37,417	56,182	-

Week:03/05/10	HG system	HS system
Stocking rate (cows/ha)	3.1	4.6
Milk yield (kg/cow/day)	25.61	23.31
% Fat	4.2	4.31
% Protein	3.38	3.32
% Lactose	4.82	4.88
Milk solids (kg/cow/day)	1.93	1.79
Supplement (kg/cow/day)		
Concentrate	3	6
Silage	0	2
Cumulative		
Milk yield (kg/cow)	1225	1180
% Fat	4.54	4.64
% Protein	3.35	3.32
% Lactose	4.78	4.80
Milk solids (kg/cow)	98	100
Bodyweight (kg)	475	448
Body Condition Score	3.0	2.9
Supplement (kg/cow)		
Concentrate	260	320
Silage to milking cows (kg DM/cow)	137	160
Maize (kg DM/cow)	0	114
Conserved silage (kg DM/cow)	817	126
Total silage fed (kg DM/cow)	930	1233