

Ballyhaise Weekly Farm Notes - Monday 10/5/2010

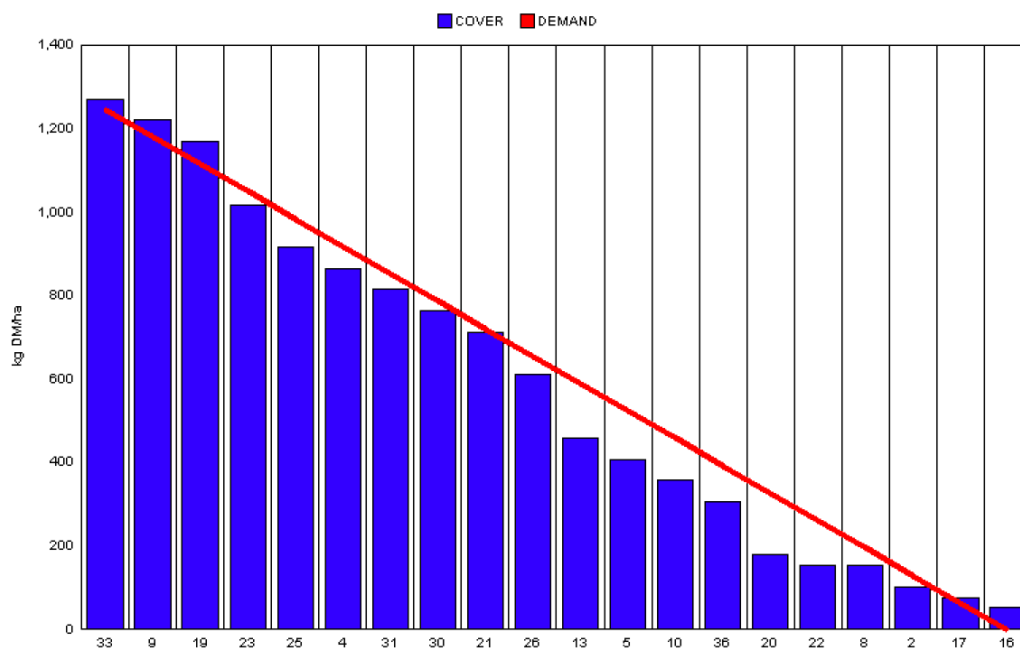
A. Critical Issues

1. Maximise cow intakes of pasture and maintain residual at 3.5cm.
2. Ensure cows are getting better fed each week.
3. Treat high SCC cows and reduce risk of cross infection.

B. On farm situation

1. Soil temperature today is 11°C.
2. Total weekly rainfall is 2.3mm.
3. Average growth was 47kgDM/ha/day, (19% DM).
4. Feeding 1kg of concentrate.
5. Farm feed wedge (10/5/10).

Teagasc, Dairy Production Department, Moorepark		GrazePlan - Grass Measurement Report	
Group : TEAGASC RESEARCH FARMS		Date Produced 12-MAY-10	
Farm : Ballyhaise Farm	Ballyhaise BMW region systems comparison		
Date : 10-MAY-10	Treatment : 3.1 stocking rate		
Rotation Length :	21	Farm Cover (kg DM/ha) :	606
Grass Allocation /cow (kg grass dry matter/LU)	16	Farm Cover (kg DM/LU) :	163
Concentrate Fed (kg/cow) :	1	Current Monthly Fertilizer Rate (kg/ha) :	
Silage Fed (kg DM/cow) :	0	Stock Rate (LU/ha) :	3.72
N Application Rate (units/acre) :		Growth Rate :	47
N Application Rate (kg/ha) :		Farm Demand (kg DM/LU/day) ::	59
Residual Height :	3.5	Target pregrazing yield (kg DM/ha) :	1248
Total Livestock :	62		



6. Paddocks 37 and 39 have been removed from rotation for reseeded. The area was sown last week half with Tyrella monoculture and the other half with Abermagic. These are both late heading diploids. The area is prone to flooding

so persistence is our first priority. This means that the stocking rate on the area is now 3.66 cows/ha.

7. Feeding 1kg of concentrate to maintain intake at 17kg DM / cow per day. Growth is just about matching demand so we will remain at this feeding level until growth rates improve.
8. We are allocating 1/21st of the farm each day (0.8 ha). At PGY of 1250kgs and 62 cows this means a grass intake of 16.1 kgs/cow/day.
9. 62 cows calved out of 62 (100%) to date.
10. Cows were tail painted on the 10th of April. Mating start date is the 10th of May for the cows and the 5th of May for the heifers. Last Friday 14 cows which had not cycled were scanned. Most of these were late calvers. Of these animals 5 had dirty tracts and were washed out.
11. Heifers will get the first shot of PG on Thursday. 15 of the 40 heifers bulled to date.
12. Average milk yield is 25.8kg at 4.63% fat and 3.39% protein (2.06kg MS/cow), lactose 4.86%, SCC 257k, TBC 5k.

C. Critical short term actions :

- Allocating grass in 24hr blocks.
- Observe heats 3 times daily.
- Tail paint topped up twice a week.
- Ensure bulling heifers and calves get fresh grass every 2-3 days.

www.agresearch.teagasc.ie/moorepark/



Dairy Production Research in the Northeast

Objective:

To increase the profitability of milk production per hectare in the BMW region through improved pasture management and utilisation in combination with genetic improvement using the Economic Breeding Index.

Year	2004	2007	2008
Grazing season (days)	226	271	280
Herd EBI (€)	28	51	55
Stocking Rate (Cows/ha)	2.2	2.6	2.9
Concentrate (kg/cow)	700	400	250
Milk (kg/ha)	12,381	11,890	13,340
Milk Solids (kg/ ha)	928	931	1,150
6 week pregnancy rate (%)	38	55	65
Farm Profit (30 ha)	37,417	56,182	-

Week:09/05/10	HG system	HS system
Stocking rate (cows/ha)	3.1	4.6
Milk yield (kg/cow/day)	25.80	25.73
% Fat	4.63	4.18
% Protein	3.39	3.44
% Lactose	4.86	4.85
Milk solids (kg/cow/day)	2.06	1.96
Supplement (kg/cow/day)		
Concentrate	1	6
Silage	0	0
Cumulative		
Milk yield (kg/cow)	1384	1338
% Fat	4.56	4.60
% Protein	3.35	3.35
% Lactose	4.80	4.79
Milk solids (kg/cow)	110	105
Bodyweight (kg)	475	448
Body Condition Score	3.0	2.9
Supplement (kg/cow)		
Concentrate	267	362
Silage to milking cows (kg DM/cow)	137	160
Maize (kg DM/cow)	0	114
Conserved silage (kg DM/cow)	817	126
Total silage fed (kg DM/cow)	930	1233