

Ballyhaise Weekly Farm Notes - Monday 17/5/2010

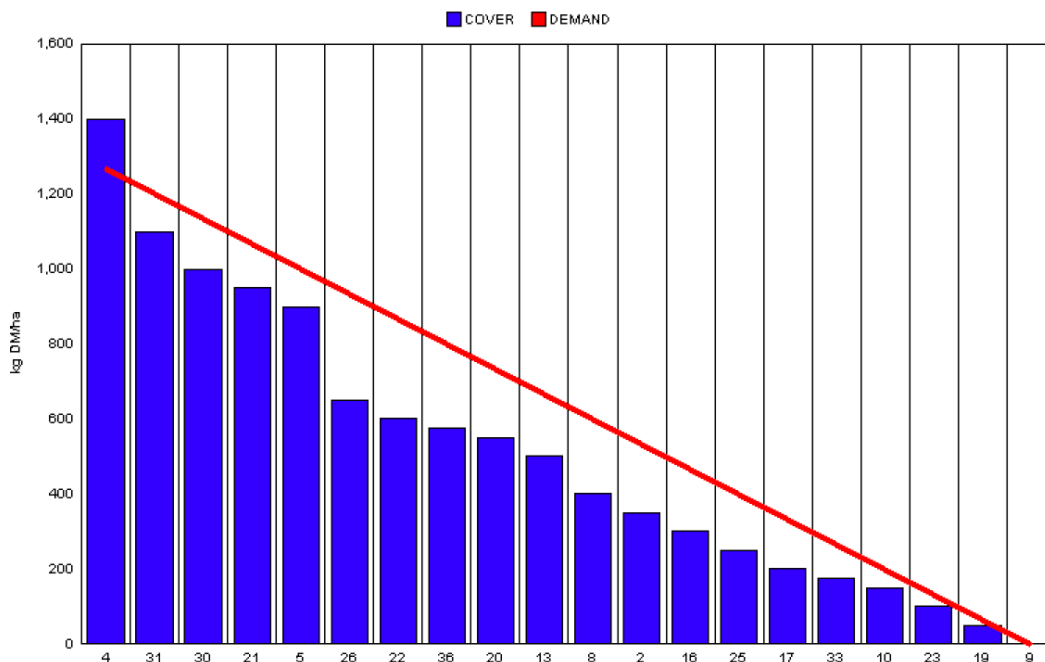
A. Critical Issues

1. Maximise cow intakes of pasture and maintain residual at 3.5cm.
2. Ensure cows are getting better fed each week.
3. Treat high SCC cows and reduce risk of cross infection.

B. On farm situation

1. Soil temperature today is 10.5°C.
2. Total weekly rainfall is 4.8mm.
3. Average growth was 39kgDM/ha/day, (18% DM).
4. Feeding 1kg of concentrate.
5. Farm feed wedge (17/5/10).

Teagasc, Dairy Production Department, Moorepark		GrazePlan - Grass Measurement Report	
Group : TEAGASC RESEARCH FARMS		Date Produced 18-MAY-10	
Farm : Ballyhaise Farm	Ballyhaise BMW region systems comparison		
Date : 17-MAY-10	Treatment : 3.1 stocking rate		
Rotation Length :	21	Farm Cover (kg DM/ha) :	514
Grass Allocation /cow (kg grass dry matter/LU)	16	Farm Cover (kg DM/LU) :	136
Concentrate Fed (kg/cow) :	1	Current Monthly Fertilizer Rate (kg/ha) :	
Silage Fed (kg DM/cow) :	0	Stock Rate (LU/ha) :	3.78
N Application Rate (units/acre) :		Growth Rate :	39
N Application Rate (kg/ha) :		Farm Demand (kg DM/LU/day) ::	60
Residual Height :	3.5	Target pregrazing yield (kg DM/ha) :	1268
Total Livestock :	63		



6. Paddocks 37 and 39 have been removed from rotation for reseeded. The area was sown last week half with Tyrella monoculture and the other half with Abermagic. These are both late heading diploids. The area is prone to flooding

so persistence is our first priority. This means that the stocking rate on the area is now 3.78 cows/ha.

7. Growth rate is still poor due to low overnight temperatures last week. Paddocks 4 and 9 were both above the demand line. Paddock 9 had a cover of 1800kgs DM. We decided to remove this paddock as bales as it was too strong to graze. This dropped our cover per cow to 136 kg DM. This is below our target of 150 kg DM / cow but with a good week's growth forecast and a relatively low demand (60 kg DM / ha / day), we should make up this deficit over the coming week.
8. Feeding 1kg of high cal-mag concentrate.
9. Cows were tail painted on the 10th of April. Mating start date is the 10th of May for the cows and the 5th of May for the heifers. Submission rate for the first week of bulling is 28% (18 cows out of 63). Tail paint is topped up twice weekly.
10. Heifers got the first shot of PG on Friday last. Submission rate is 95% (38 out of 40 heifers submitted).
11. Average milk yield is 24.72kg at 4.64% fat and 3.39% protein (1.97kg MS/cow), lactose 4.86%, SCC 227k, TBC 5k.

C. Critical short term actions :

- Observe heats 3 times daily.
- Tail paint topped up twice a week.
- Ensure bulling heifers and calves get fresh grass every 2-3 days.

www.agresearch.teagasc.ie/moorepark/



Dairy Production Research in the Northeast

Objective:

To increase the profitability of milk production per hectare in the BMW region through improved pasture management and utilisation in combination with genetic improvement using the Economic Breeding Index.

Year	2004	2007	2008
Grazing season (days)	226	271	280
Herd EBI (€)	28	51	55
Stocking Rate (Cows/ha)	2.2	2.6	2.9
Concentrate (kg/cow)	700	400	250
Milk (kg/ha)	12,381	11,890	13,340
Milk Solids (kg/ ha)	928	931	1,150
6 week pregnancy rate (%)	38	55	65
Farm Profit (30 ha)	37,417	56,182	-

Week:16/05/10	HG system	HS system
Stocking rate (cows/ha)	3.1	4.6
Milk yield (kg/cow/day)	24.72	26.29
% Fat	4.64	4.18
% Protein	3.39	3.44
% Lactose	4.86	4.85
Milk solids (kg/cow/day)	1.97	2.01
Supplement (kg/cow/day)		
Concentrate	1	6
Silage	0	0
Cumulative		
Milk yield (kg/cow)	1563	1497
% Fat	4.57	4.55
% Protein	3.35	3.35
% Lactose	4.81	4.8
Milk solids (kg/cow)	125	119
Bodyweight (kg)	475	448
Body Condition Score	3.0	2.9
Supplement (kg/cow)		
Concentrate	274	404
Silage to milking cows (kg DM/cow)	137	160
Maize (kg DM/cow)	0	114
Conserved silage (kg DM/cow)	817	126
Total silage fed (kg DM/cow)	930	1233