

Ballyhaise Weekly Farm Notes - Monday 21/6/2010

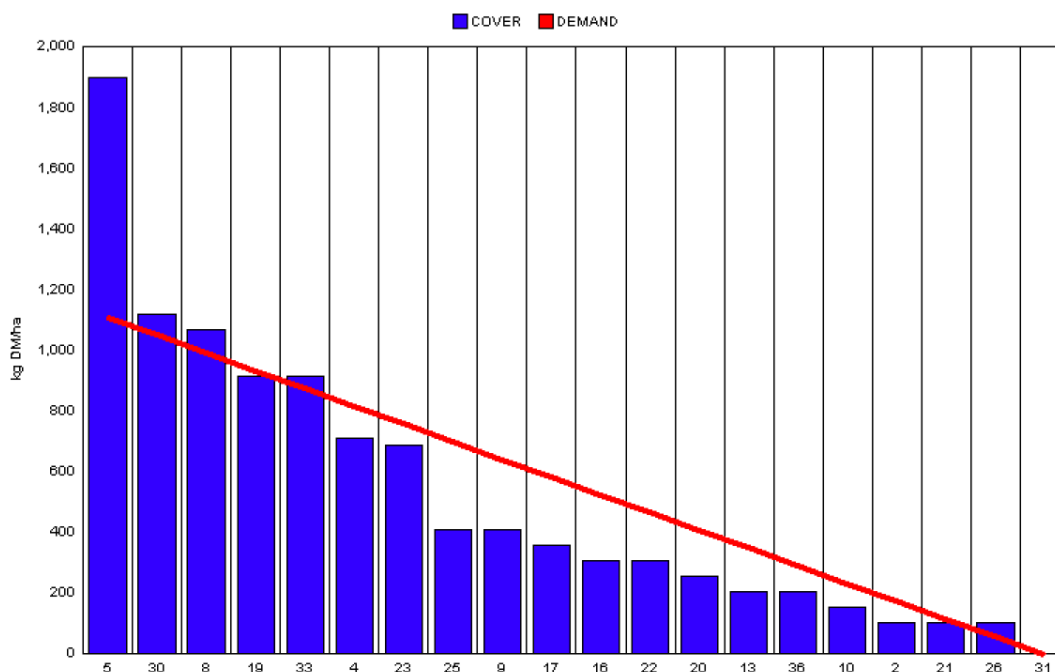
A. Critical Issues

1. Maximise cow intakes of pasture and maintain residual at 3.5cm.
2. Ensure cows are getting better fed each week.
3. Treat high SCC cows and reduce risk of cross infection.

B. On farm situation

1. Soil temperature today is 14°C.
2. Total weekly rainfall is 4.1mm.
3. Average growth was 51kgDM/ha/day, (22% DM).
4. Feeding 3kg of concentrate.
5. Farm feed wedge (21/6/10).

Teagasc, Dairy Production Department, Moorepark		GrazePlan - Grass Measurement Report	
Group : TEAGASC RESEARCH FARMS		Date Produced 23-JUN-10	
Farm : Ballyhaise Farm	Ballyhaise BMW region systems comparison		
Date : 21-JUN-10	Treatment : 3.1 stocking rate		
Rotation Length :	21	Farm Cover (kg DM/ha) :	511
Grass Allocation /cow (kg grass dry matter/LU)	14	Farm Cover (kg DM/LU) :	135
Concentrate Fed (kg/cow) :	3	Current Monthly Fertilizer Rate (kg/ha) :	
Silage Fed (kg DM/cow) :	0	Stock Rate (LU/ha) :	3.78
N Application Rate (units/acre) :		Growth Rate :	51
N Application Rate (kg/ha) :		Farm Demand (kg DM/LU/day) ::	53
Residual Height :	3.5	Target pregrazing yield (kg DM/ha) :	1110
Total Livestock :	63		



6. Growth rate has dropped due to soil moisture deficit. Paddock 5 was skipped for bales but will have to be grazed to lengthen rotation to 21 days. Grass is

stressed and is going to seed at covers of 700-900kgDM/ha. 3kg of concentrate have been introduced to reduce demand to 53kgDM/ha/day.

7. Spreading watery slurry from lagoon on grazed paddocks. The farm is up to date with fertiliser but no more will be spread until rain is forecast.
8. Cows were tail painted on the 10th of April. Mating start date is the 10th of May for the cows and the 5th of May for the heifers. 24 day submission rate is 90% (57 cows out of 63). Tail paint is topped up once weekly. All cows have been submitted. Today is the beginning of week 7 of breeding.
9. Average milk yield is 20.07kg at 4.10% fat and 3.42% protein (1.55kg MS/cow), lactose 4.85%, SCC 180k, TBC 5k.

C. Critical short term actions :

- Observe heats 3 times daily.
- Tail paint topped up once a week.
- Ensure bulling heifers and calves get fresh grass every 2-3 days.

www.agresearch.teagasc.ie/moorepark/



Dairy Production Research in the Northeast

Objective:

To increase the profitability of milk production per hectare in the BMW region through improved pasture management and utilisation in combination with genetic improvement using the Economic Breeding Index.

Year	2004	2007	2008
Grazing season (days)	226	271	280
Herd EBI (€)	28	51	55
Stocking Rate (Cows/ha)	2.2	2.6	2.9
Concentrate (kg/cow)	700	400	250
Milk (kg/ha)	12,381	11,890	13,340
Milk Solids (kg/ ha)	928	931	1,150
6 week pregnancy rate (%)	38	55	65
Farm Profit (30 ha)	37,417	56,182	-

Week:20/06/10	HG system	HS system
Stocking rate (cows/ha)	3.1	4.6
Milk yield (kg/cow/day)	20.74	23.11
% Fat	4.10	3.84
% Protein	3.42	3.4
% Lactose	4.73	4.85
Milk solids (kg/cow/day)	1.55	1.67
Supplement (kg/cow/day)		
Concentrate	0.5	3
Silage	0	0
Cumulative		
Milk yield (kg/cow)	2302	2355
% Fat	4.39	4.37
% Protein	3.36	3.36
% Lactose	4.81	4.83
Milk solids (kg/cow)	178	182
Bodyweight (kg)	475	448
Body Condition Score	3.0	2.9
Supplement (kg/cow)		
Concentrate	305	540
Silage to milking cows (kg DM/cow)	137	160
Maize (kg DM/cow)	0	114
Conserved silage (kg DM/cow)	817	126
Total silage fed (kg DM/cow)	930	1233

