

## Ballyhaise Weekly Farm Notes - Monday 9/8/2010

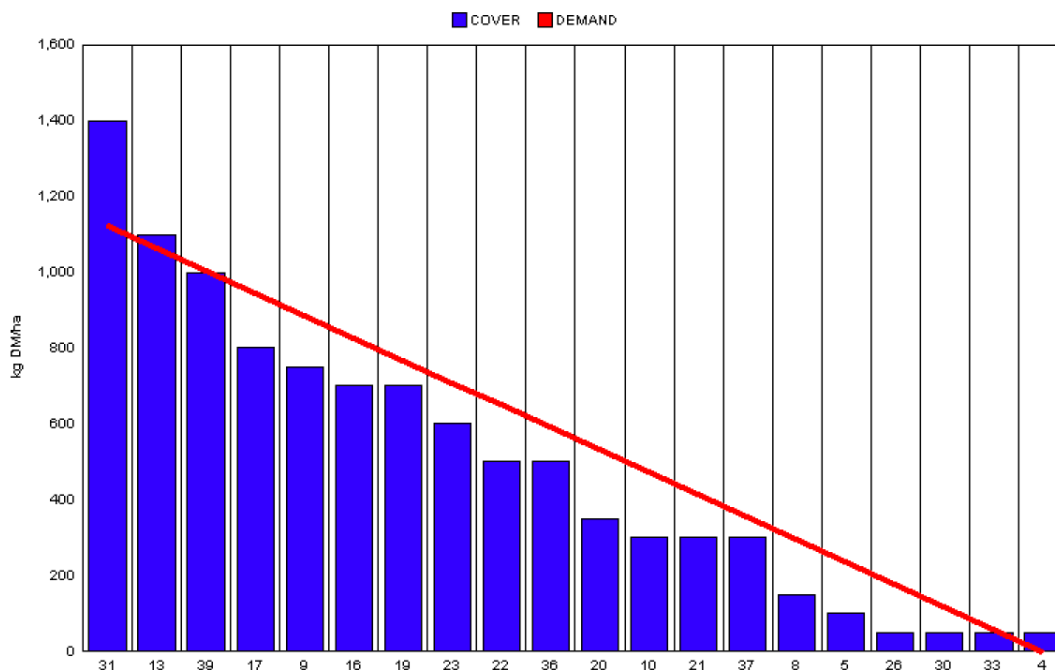
### A. Critical Issues

1. Maximise cow intakes of pasture and maintain residual at 3.5cm.
2. Ensure cows are getting better fed each week.
3. Treat high SCC cows and reduce risk of cross infection.

### B. On farm situation

1. Soil temperature today is 16°C.
2. Total weekly rainfall is 12mm.
3. Average growth was 64kgDM/ha/day, (14% DM).
4. Farm feed wedge (9/8/10).

Moorepark Animal & Grassland Research and Innovation Centre		GrazePlan - Grass Measurement Report	
<b>Group :</b> TEAGASC RESEARCH FARMS		<b>Date Produced</b> 10-AUG-10	
<b>Farm :</b> Ballyhaise Farm	Ballyhaise BMW region systems comparison		
<b>Date :</b> 09-AUG-10	<b>Treatment :</b> 3.1 stocking rate		
<b>Rotation Length :</b>	21	<b>Farm Cover (kg DM/ha) :</b>	541
<b>Grass Allocation /cow (kg grass dry matter/LU)</b>	16	<b>Farm Cover (kg DM/LU) :</b>	162
<b>Concentrate Fed (kg/cow) :</b>	0	<b>Current Monthly Fertilizer Rate (kg/ha) :</b>	
<b>Silage Fed (kg DM/cow) :</b>	0	<b>Stock Rate (LU/ha) :</b>	3.35
<b>N Application Rate (units/acre) :</b>		<b>Growth Rate :</b>	64
<b>N Application Rate (kg/ha) :</b>		<b>Farm Demand (kg DM/LU/day) ::</b>	54
<b>Residual Height :</b>	3.5	<b>Target pregrazing yield (kg DM/ha) :</b>	1125
<b>Total Livestock :</b>	63		



5. Growth rate is adequate to meet demand even with 2.37 ha (11%) removed as silage. Paddocks 33 and 30 have been baled. They both had a cover of 2100kg DM/ ha. About 75% of the area has been cut for silage at some stage during the year; this has allowed us to keep good quality grass ahead of the cows for the majority of the season so far.
6. All paddocks that have been grazed this week are getting 20 units of CAN.
7. Milk yield has dropped steadily over the past 3 weeks (1 litre a week). Solids % has remained steady. This is not a nutritional problem as grass quality is excellent and cow condition has not decreased. The mature cows are still milking quite well but the 1<sup>st</sup> lactation heifers have dropped more dramatically (25% of the herd).
8. Cows were tail painted on the 10<sup>th</sup> of April. Mating start date was the 10<sup>th</sup> of May for the cows and the 5<sup>th</sup> of May for the heifers. 24 day submission rate is 90% (57 cows out of 63). Bulls were introduced on week seven of the breeding season and breeding commences this week (13 weeks). Still some repeats showing up but activity has decreased dramatically over the last three weeks. Scanned last week, 68% confirmed in-calf for first 8 week period. This is disappointing considering submission rate was good.
9. Weighed and Dosed heifers for worms last week, average weight 350kg. They will need to 90% of mature weight (500kg) at calving down or 450kg. This means they need to gain 100kgs in 190 days or 0.52kgs /day. This is achievable even though grass quality tends to be a problem on the heifer block as much of the area is too rough to remove surpluses as silage. Heifers also scanned 39 out of 40 in-calf in six week period.
10. Average milk yield is 17.24kg at 4.34% fat and 3.53% protein (1.34kg MS/cow), lactose 4.68%, SCC 260k, TBC 17k.

### C. Critical short term actions :

- Ensure bulling heifers and calves get fresh grass every 2-3 days.
- Keep grazing reseeded every 10 – 12 days.
- Dose calves every 6 weeks.

[www.agresearch.teagasc.ie/moorepark/](http://www.agresearch.teagasc.ie/moorepark/)



## Dairy Production Research in the Northeast

### Objective:

To increase the profitability of milk production per hectare in the BMW region through improved pasture management and utilisation in combination with genetic improvement using the Economic Breeding Index.

Year	2004	2007	2008
Grazing season (days)	226	271	280
Herd EBI (€)	28	51	55
Stocking Rate (Cows/ha)	2.2	2.6	2.9
Concentrate (kg/cow)	700	400	250
Milk (kg/ha)	12,381	11,890	13,340
Milk Solids (kg/ ha)	928	931	1,150
6 week pregnancy rate (%)	38	55	65
Farm Profit (30 ha)	37,417	56,182	-

Week Ending :09/08/10	HG system	HS system
<b>Stocking rate (cows/ha)</b>	<b>3.1</b>	<b>4.6</b>
Milk yield (kg/cow/day)	17.24	16.30
% Fat	4.34	4.11
% Protein	3.53	3.55
% Lactose	4.68	4.70
Milk solids (kg/cow/day)	1.34	1.24
Supplement (kg/cow/day)		
Concentrate	0	0
Silage	0	0
<b>Cumulative</b>		
Milk yield (kg/cow)	3250	3357
% Fat	4.33	4.29
% Protein	3.39	3.40
% Lactose	4.79	4.82
Milk solids kg/cow (kg/ha)	250 (775)	258 (1186)
Bodyweight (kg)	501	491
Body Condition Score	2.95	2.99
Supplement (kg/cow)		
Concentrate	338	617
Silage to milking cows (kg DM/cow)	158	188
Maize (kg DM/cow)	0	114
Conserved silage (kg DM/cow)	817	126
Total silage fed ( kg DM/cow)	930	1233