

Ballyhaise Weekly Farm Notes - Monday 26/10/2010

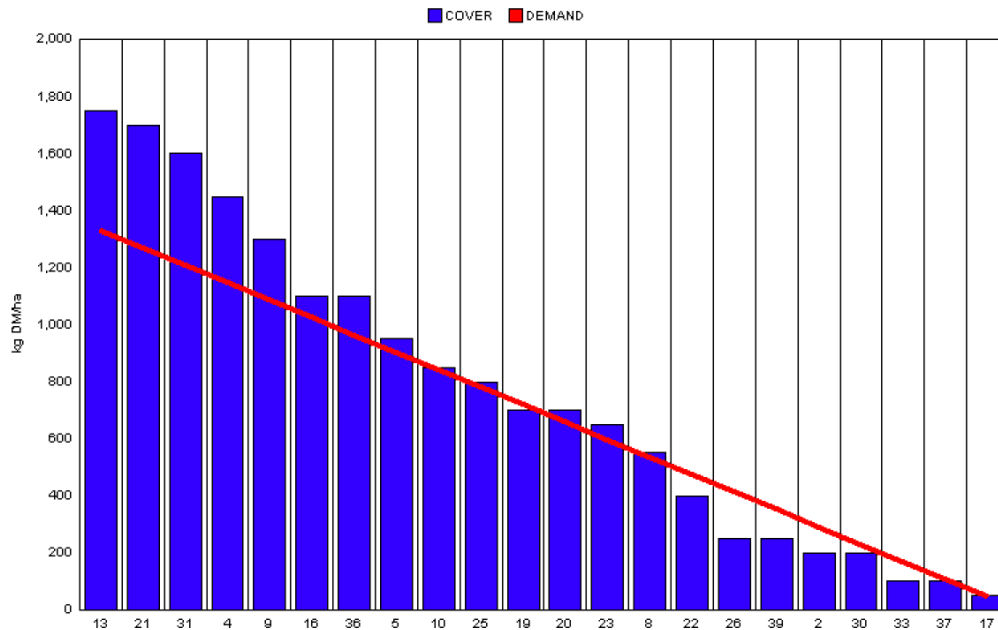
A. Critical Issues

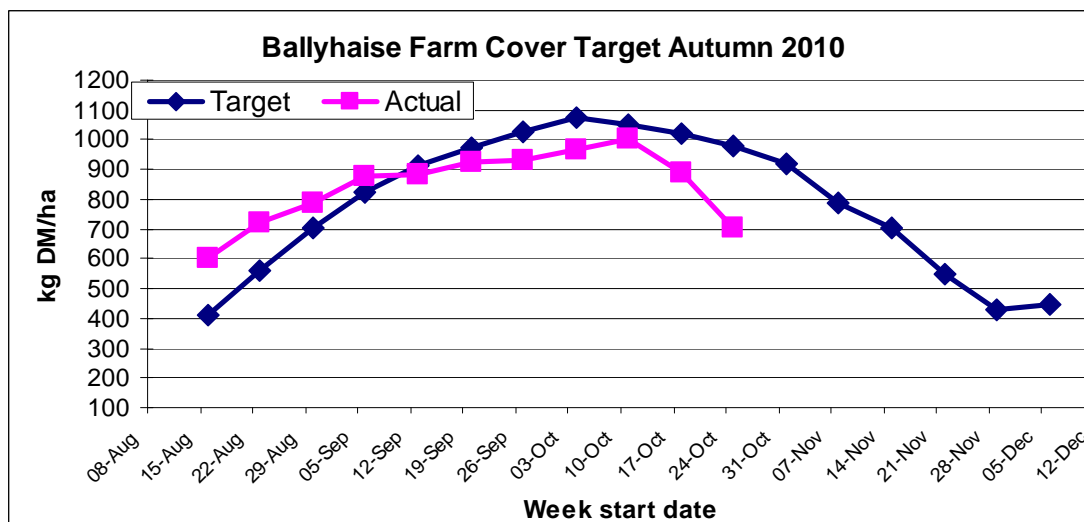
1. Maximise cow intakes of pasture and maintain residual at 3.5cm.
2. Monitor soil conditions to reduce risk of poaching.
3. Treat high SCC cows and reduce risk of cross infection.

B. On farm situation

1. Average growth was 28kgDM/ha/day, (13% DM).
2. Feeding 4 kg of concentrate.
3. Farm feed wedge (26/10/10).

| Moorepark Animal & Grassland Research and Innovation Centre | | GrazePlan - Grass Measurement Report | |
|-------------------------------------------------------------|-----|-------------------------------------------|------|
| Group : TEAGASC RESEARCH FARMS | | Date Produced 27-OCT-10 | |
| Farm : Ballyhaise Farm | | Ballyhaise BMW region systems comparison | |
| Date : 26-OCT-10 | | Treatment : 3.1 stocking rate | |
| Rotation Length : | 45 | Farm Cover (kg DM/ha) : | 704 |
| Grass Allocation /cow (kg grass dry matter/LU) | 11 | Farm Cover (kg DM/LU) : | 271 |
| Concentrate Fed (kg/cow) : | 4 | Current Monthly Fertilizer Rate (kg/ha) : | |
| Silage Fed (kg DM/cow) : | 0 | Stock Rate (LU/ha) : | 2.59 |
| N Application Rate (units/acre) : | | Growth Rate : | 28 |
| N Application Rate (kg/ha) : | | Farm Demand (kg DM/LU/day) : | 29 |
| Residual Height : | 4.2 | Target pregrazing yield (kg DM/ha) : | 1334 |
| Total Livestock : | 52 | | |



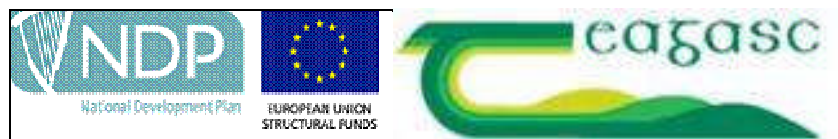


4. Growth rate has dropped significantly over the past two weeks. As can be seen above we are well behind target farm cover. We have sold 4 empty cows last week and another 6 will be sold off this week. We also dried off 4 low yielding heifers. This will reduce the demand to 26kg DM / ha, which will allow us to stretch remaining grass supply until mid November.
5. Cow condition is satisfactory at an average of 2.95. There are 6 cows with condition score of 2.5 or under (10% of the herd). Three of these are calving in late February and will be dried off in mid November in order to be in correct condition score at calving. Two are cull cows and one is not due to calve until late march.
6. Started closing paddocks on the 10th of October. The target is to have 60% of our area grazed by the 5th of November. This means that of the 20.05 ha block 12.03ha will have to be grazed by the 5th of November. There is 42% of the farm closed to date (8.4 ha).
7. Rotation length is 34 days. The demand line on the wedge is based on a 45 day rotation.
8. Cows were tail painted on the 10th of April. Mating start date was the 10th of May for the cows and the 5th of May for the heifers. 24 day submission rate is 90% (57 cows out of 63). Bulls were introduced on week seven of the breeding season and breeding commenced after 13 weeks. Scanned last week, 68% confirmed in-calf for first 8 week period. This is disappointing considering submission rate was good.
9. Average milk yield is 12.19kg at 5.40% fat and 4.27% protein (1.17kg MS/cow), lactose 4.48%, SCC 280k, TBC 22k.

C. Critical short term actions :

- Monitor residuals and maintain at 3.5 to 4.0 cm.
- Allocate grass twice daily.
- On-off grazing in wet conditions.

www.agresearch.teagasc.ie/moorepark/



Dairy Production Research in the Northeast

Objective:

To increase the profitability of milk production per hectare in the BMW region through improved pasture management and utilisation in combination with genetic improvement using the Economic Breeding Index.

| Year | 2004 | 2007 | 2008 |
|---------------------------|--------|--------|--------|
| Grazing season (days) | 226 | 271 | 280 |
| Herd EBI (€) | 28 | 51 | 55 |
| Stocking Rate (Cows/ha) | 2.2 | 2.6 | 2.9 |
| Concentrate (kg/cow) | 700 | 400 | 250 |
| Milk (kg/ha) | 12,381 | 11,890 | 13,340 |
| Milk Solids (kg/ ha) | 928 | 931 | 1,150 |
| 6 week pregnancy rate (%) | 38 | 55 | 65 |
| Farm Profit (30 ha) | 37,417 | 56,182 | - |

| Week Ending :24/10/10 | HG system | HS system |
|------------------------------------|------------------|------------------|
| Stocking rate (cows/ha) | 3.1 | 4.6 |
| Milk yield (kg/cow/day) | 12.19 | 13.77 |
| % Fat | 5.40 | 4.89 |
| % Protein | 4.27 | 3.99 |
| % Lactose | 4.48 | 4.56 |
| Milk solids (kg/cow/day) | 1.17 | 1.22 |
| Supplement (kg/cow/day) | | |
| Concentrate | 4 | 4 |
| Silage | 0 | 6 |
| Cumulative | | |
| Milk yield (kg/cow) | 4360 | 4505 |
| % Fat | 4.39 | 4.34 |
| % Protein | 3.50 | 3.49 |
| % Lactose | 4.75 | 4.76 |
| Milk solids kg/cow (kg/ha) | 343 (1077) | 350 (1522) |
| Bodyweight (kg) | 504 | 492 |
| Body Condition Score | 2.95 | 2.92 |
| Supplement (kg/cow) | | |
| Concentrate | 542 | 1036 |
| Silage to milking cows (kg DM/cow) | 158 | 272 |
| Maize (kg DM/cow) | 0 | 114 |
| Conserved silage (kg DM/cow) | 474 | 95 |