

## Ballyhaise Weekly Farm Notes - Monday 22/11/2010

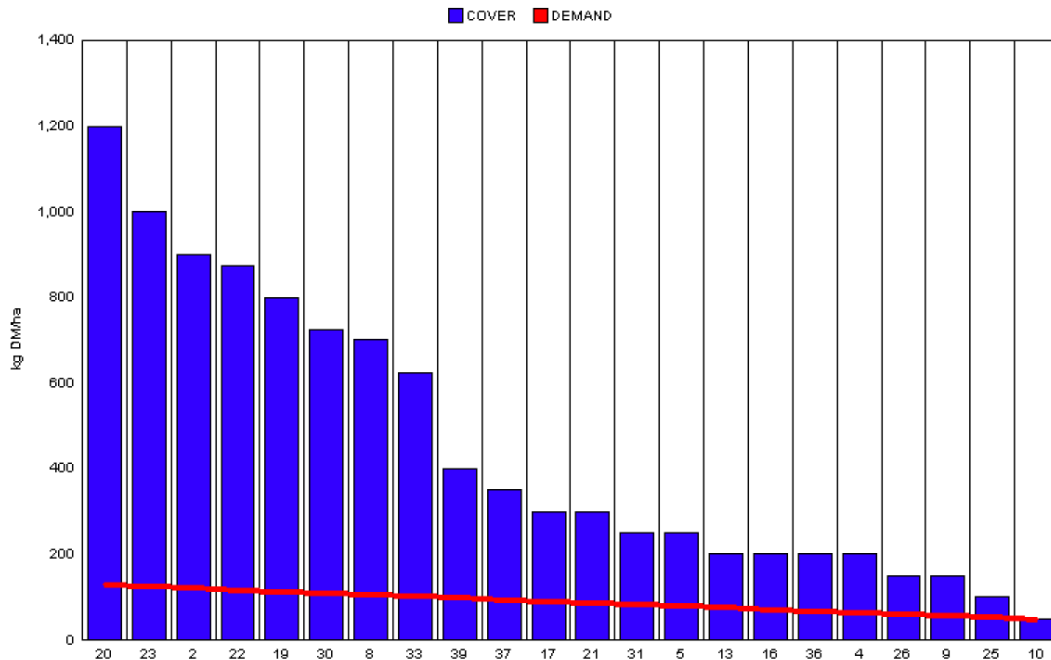
### A. Critical Issues

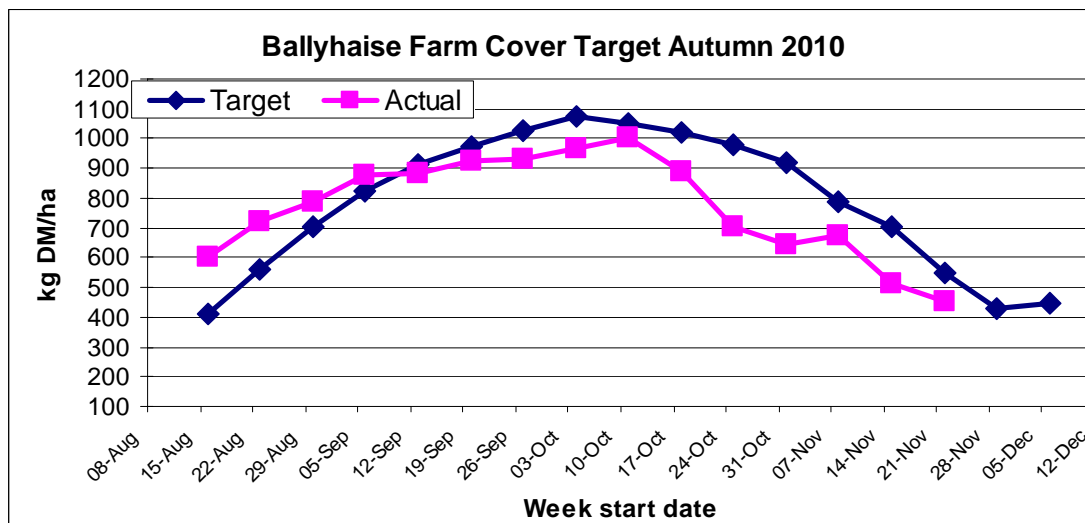
1. Monitor cow condition and dry off accordingly.
2. Treat high SCC cows before drying off.
3. Dose for fluke and worms at drying off.

### B. On farm situation

1. Average growth was 14kgDM/ha/day, (12% DM).
2. Total rainfall for the last 7 days was 28mm.
3. Average soil temperature is 5.5°C.
4. Feeding 3 kg of concentrate.
5. Farm feed wedge (22/11/10).

Moorepark Animal & Grassland Research and Innovation Centre		GrazePlan - Grass Measurement Report	
Group : TEAGASC RESEARCH FARMS		Date Produced 23-NOV-10	
Farm : Ballyhaise Farm	Ballyhaise BMW region systems comparison		
Date : 22-NOV-10	Treatment : 3.1 stocking rate		
Rotation Length : 38 Grass Allocation /cow (kg grass dry matter/LU) : 0 Concentrate Fed (kg/cow) : 3 Silage Fed (kg DM/cow) : 12 N Application Rate (units/acre) : N Application Rate (kg/ha) : Residual Height : 4.2 Total Livestock : 42	Farm Cover (kg DM/ha) : 443 Farm Cover (kg DM/LU) : 211 Current Monthly Fertilizer Rate (kg/ha) : Stock Rate (LU/ha) : 2.10 Growth Rate : 14 Farm Demand (kg DM/LU/day) : 2 Target pregrazing yield (kg DM/ha) : 130		





6. Farm closed on Friday the 19<sup>th</sup>, cows are housed getting ad-lib bale silage and 3kg of concentrates. Paddock 20 has a higher than ideal cover for carrying over the winter but grazing it would leave the farm cover too low. It is good quality and was grazed out well in the last round so it should be ok.
7. Cow condition is satisfactory at an average of 2.94. We have dried off 12 cows this week. Two were high SCC cows with low yields which were treated before drying off with mastitis tubes. There were three thin cows (2.5 BCS) that are due to calve in mid February and the rest were first lactation heifers due to calve in February also.
8. Treating cows for fluke and worms at drying off, they will be treated for lice when all cows are dried, and will be dosed for rumen fluke in January.
9. Cows were tail painted on the 10<sup>th</sup> of April. Mating start date was the 10<sup>th</sup> of May for the cows and the 5<sup>th</sup> of May for the heifers. 24 day submission rate is 90% (57 cows out of 63). Bulls were introduced on week seven of the breeding season and breeding commenced after 13 weeks. The final empty rate was 19% after 13 weeks.
10. Average milk yield is 13.83kg at 4.73% fat and 4.24% protein (1.23kg MS/cow), lactose 4.48%, SCC 275k, TBC 11k.

[www.agresearch.teagasc.ie/moorepark/](http://www.agresearch.teagasc.ie/moorepark/)



## Dairy Production Research in the Northeast

### Objective:

To increase the profitability of milk production per hectare in the BMW region through improved pasture management and utilisation in combination with genetic improvement using the Economic Breeding Index.

Year	2004	2007	2008
Grazing season (days)	226	271	280
Herd EBI (€)	28	51	55
Stocking Rate (Cows/ha)	2.2	2.6	2.9
Concentrate (kg/cow)	700	400	250
Milk (kg/ha)	12,381	11,890	13,340
Milk Solids (kg/ ha)	928	931	1,150
6 week pregnancy rate (%)	38	55	65
Farm Profit (30 ha)	37,417	56,182	-

<b>Week Ending :21/11/10</b>	<b>HG system</b>	<b>HS system</b>
<b>Stocking rate (cows/ha)</b>	<b>3.1</b>	<b>4.6</b>
Milk yield (kg/cow/day)	12.32	11.46
% Fat	4.37	4.47
% Protein	3.94	3.87
% Lactose	4.55	4.53
Milk solids (kg/cow/day)	1.02	0.95
Supplement (kg/cow/day)		
Concentrate	3	4
Silage	5	12
<b>Cumulative</b>		
Milk yield (kg/cow)	4637	4852
% Fat	4.41	4.37
% Protein	3.53	3.51
% Lactose	4.73	4.75
Milk solids kg/cow (kg/ha)	367 (1152)	382 (1661)
Bodyweight (kg)	504	492
Body Condition Score	2.94	3.04
Supplement (kg/cow)		
Concentrate	612	1153
Silage to milking cows (kg DM/cow)	211	350
Maize (kg DM/cow)	0	114
Conserved silage (kg DM/cow)	474	95