

## Ballyhaise Weekly Farm Notes - Monday 1/3/2011

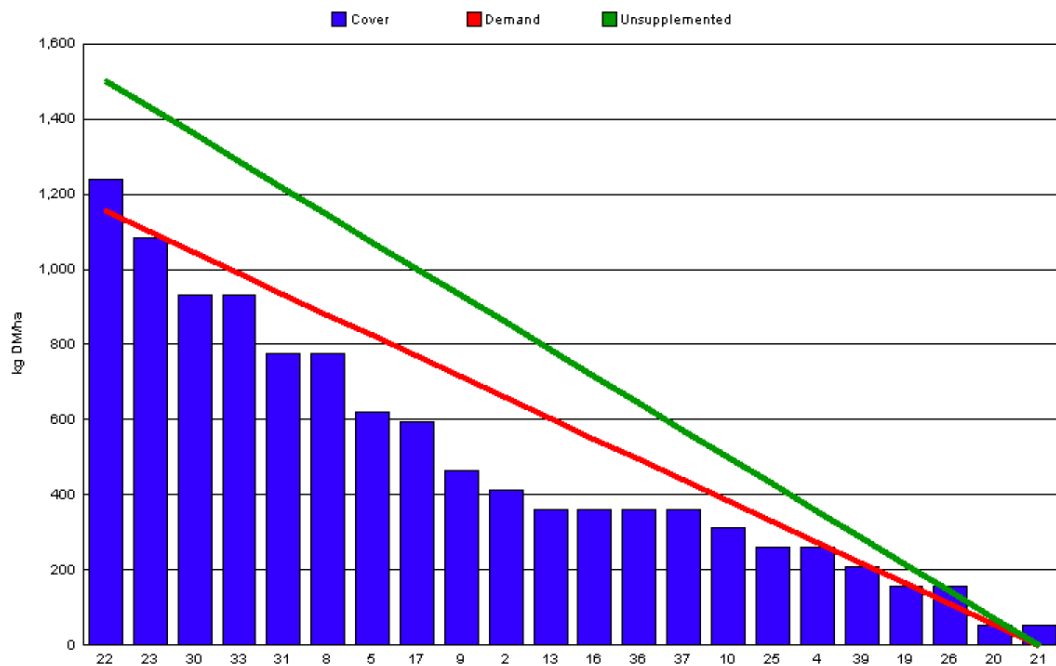
### A. Critical Issues

1. Use rotation planner to allocate grass daily.
2. Maintain residual at 3.5cm.
3. Minimise risk of mastitis infection around calving.
4. Ensure each calve receives adequate colostrum.

### B. On farm situation

1. Soil temperature today is 7.5°C.
2. Total weekly rainfall is 8.2mm.
3. Average growth was 11kgDM/ha/day, (22% DM).
4. Demand is 14kgDM/ha/day (1.45 SR \* 10 kg DM /cow / day).
5. Feeding 3kg of concentrate.
6. Farm feed wedge (28/2/11).

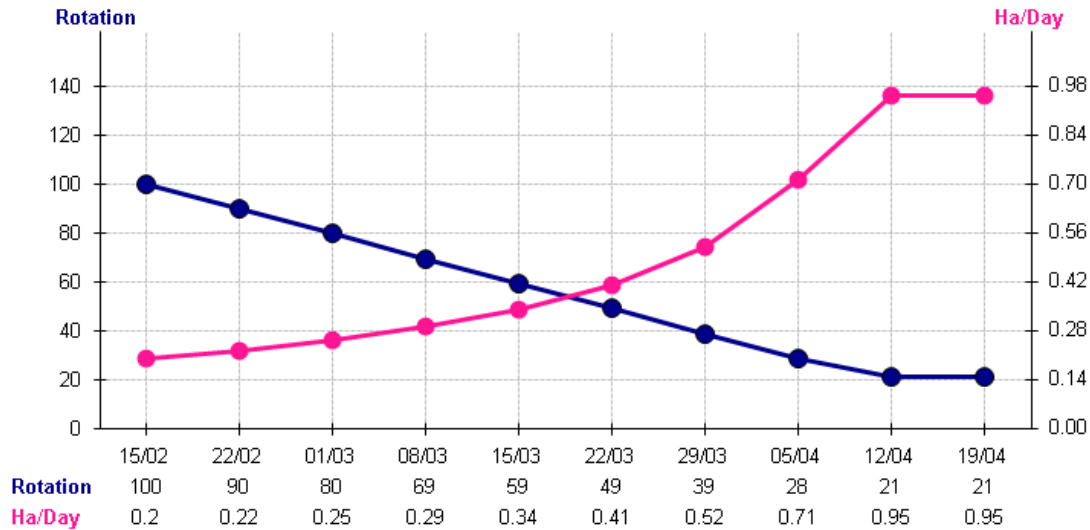
Moorepark Animal & Grassland Research and Innovation Centre		GrazePlan - Grass Measurement Report	
Group : TEAGASC RESEARCH FARMS		Date Produced 01-MAR-11	
Farm : Ballyhaise Farm		Ballyhaise BMW region systems comparison	
Date : 28-FEB-11		Treatment : 3.1 stocking rate	
Rotation Length :	80	Farm Cover (kg DM/ha) :	486
Grass Allocation /cow (kg grass dry matter/LU	10	Farm Cover (kg DM/LU) :	336
Concentrate Fed (kg/cow) :	3	Current Monthly Fertilizer Rate (kg/ha) :	
Silage Fed (kg DM/cow) :	0	Stock Rate (LU/ha) :	1.45
N Application Rate (units/acre) :		Growth Rate :	11
N Application Rate (kg/ha) :		Farm Demand (kg DM/LU/day) :	14
Residual Height :	3.5	Target pregrazing yield (kg DM/ha) :	1157
Total Livestock :	29		



7. Farm cover is low due to very low over winter growth rates. The opening cover on the farm was 419kg DM / ha. The closing cover last autumn was

475kg DM / ha. Growth rates have improved over the past two weeks as soil temperatures have risen above 6°C. Growth this week is 11kg DM / ha which is up from 6 kg DM / ha last week.

8. Spring Rotation planner (28/02/11)



Week Start Date	Ha/Day	Target Ha Grazed by week end	Target %	Actual Ha Grazed by week end	Actual %
15/02 - 22/02	0.20	1.40	7.0	0.76	3.8
22/02 - 01/03	0.22	2.94	14.7	2.2	11
01/03 - 08/03	0.25	4.69	23.4		
08/03 - 15/03	0.29	6.72	33.5		
15/03 - 22/03	0.34	9.10	45.4		
22/03 - 29/03	0.41	11.97	59.7		
29/03 - 05/04	0.52	15.61	77.9		
05/04 - 12/04	0.71	20.58	102.6		

9. We are slightly behind the target area to be grazed as cows were being housed at night and getting silage until this week. We will graze some lower covers this week to catch up.

10. Grass allocated daily using the spring rotation planner. The area allocated this week is 0.25ha per day. At a pre-grazing yield of 1225 kg DM / ha this area

will give each animal an allowance of 10kg DM per day ( $1225 * 0.25 = 306 / 30 = 10 \text{ kg DM / cow / day}$ ).

11. Feeding 3kg of concentrate to maintain intake at 13kg DM / cow per day.
12. Post grazing height on the last paddock grazed was 3.2cm.
13. Urea was bulk spread on 70% of the area on the 15<sup>th</sup> of February (23 units N / acre), 20% of the area received 2500 gals / acre. The remaining 10% of the area is the wettest part and will get 23 units of N this week.
14. Calving started on the 6<sup>th</sup> of February, 46 % calved to date. Of 53 animals calved 3 were assisted, there have been no cases of milk fever and there was one case of retained afterbirth. There are 23 heifer calves born and no calf deaths to date.
15. There have been 6 clinical cases of mastitis since calving started, 4 of these were first calving heifers. The first bulk tank SCC was 532K, the whole herd was CMT'd last week and 6 high SCC animals have been taken out and treated.
16. Average milk yield is 17.5kg at 5.13% fat and 3.97% protein (1.6kg MS/cow), lactose 4.6%, SCC 532k, TBC 48k.

### C. Critical short term actions :

- Allocating grass in 12hr blocks.
- 2kg concentrate being fed.

[www.agresearch.teagasc.ie/moorepark/](http://www.agresearch.teagasc.ie/moorepark/)



