

Ballyhaise Weekly Farm Notes - Monday 28/3/2011

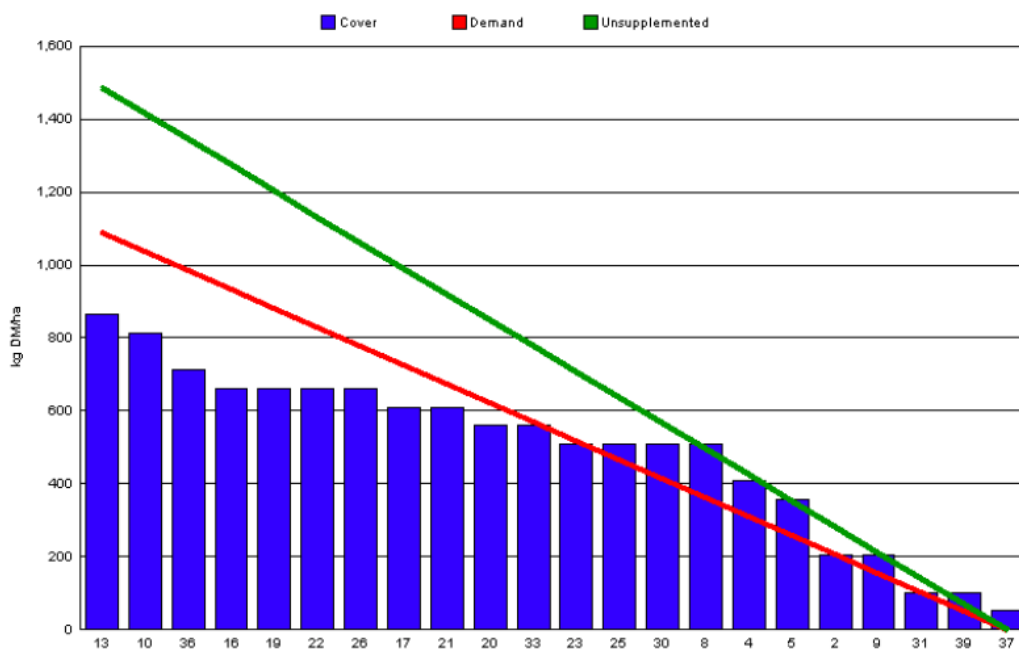
A. Critical Issues

1. Use rotation planner to allocate grass daily.
2. Maintain residual at 3.5cm.
3. Minimise risk of mastitis infection around calving.
4. Ensure each calve receives adequate colostrum.

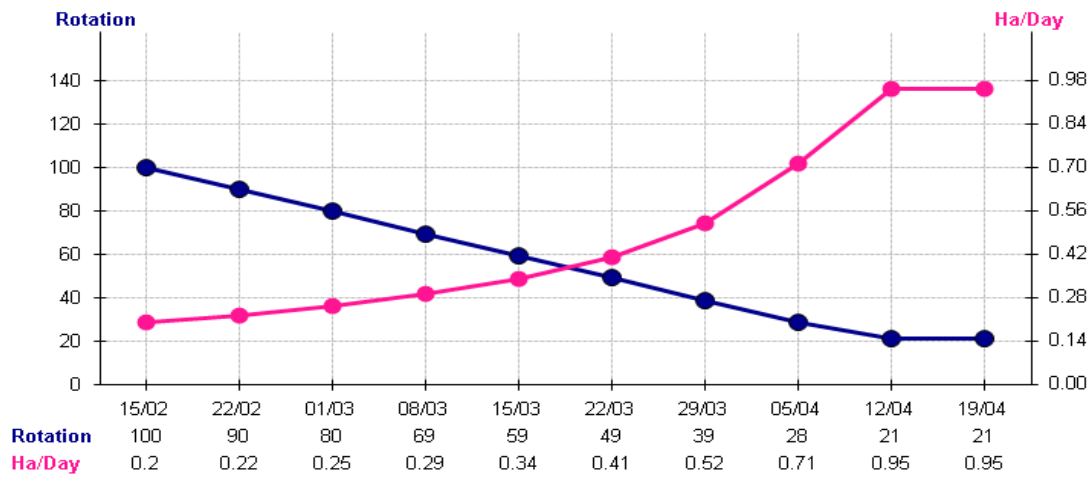
B. On farm situation

1. Average growth was 34kgDM/ha/day, (18% DM).
2. Demand is 28kgDM/ha/day (2.54 SR * 11 kg DM /cow / day).
3. Feeding 4kg of concentrate.
4. Farm feed wedge (28/3/11).

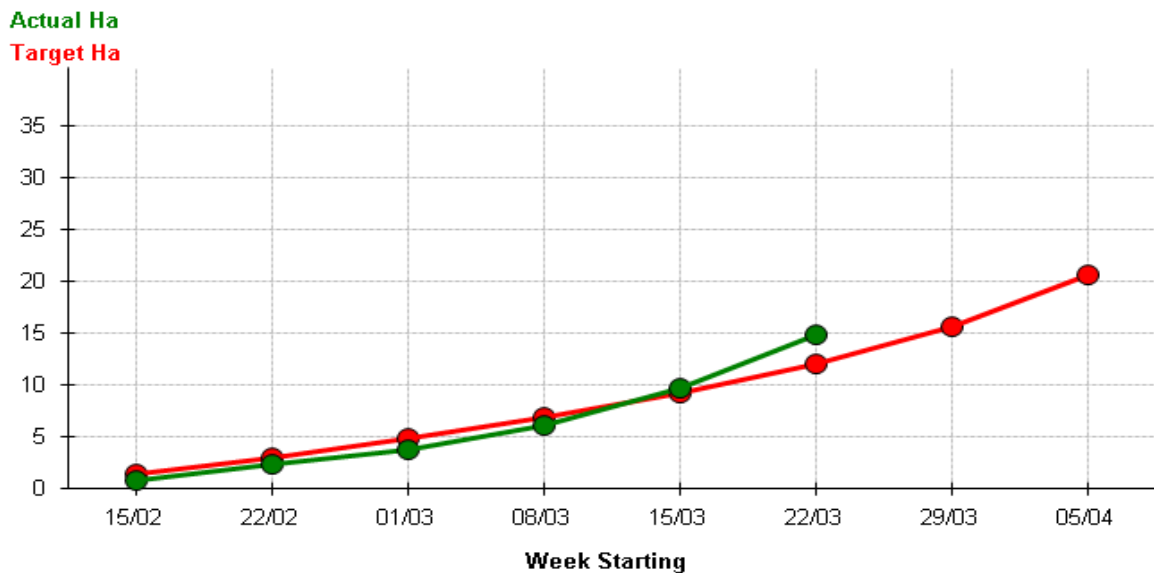
Moorepark Animal & Grassland Research and Innovation Centre		GrazePlan - Grass Measurement Report	
Group : TEAGASC RESEARCH FARMS		Date Produced 30-MAR-11	
Farm : Ballyhaise Farm		Ballyhaise BMW region systems comparison	
Date : 28-MAR-11		Treatment : 3.1 stocking rate	
Rotation Length :	39	Farm Cover (kg DM/ha) :	454
Grass Allocation /cow (kg grass dry matter/LU)	11	Farm Cover (kg DM/LU) :	178
Concentrate Fed (kg/cow) :	4	Stock Rate (LU/ha) :	2.54
Silage Fed (kg DM/cow) :	0	Growth Rate :	34
N Application Rate (units/acre) :		Farm Demand (kg DM/LU/day) :	28
N Application Rate (kg/ha) :		Target pregrazing yield (kg DM/ha) :	1091
Residual Height :	3.5		
Total Livestock :	51		



5. Farm cover is low due to very low over winter growth rates. The opening cover on the farm was 419kg DM / ha. The closing cover last autumn was 475kg DM / ha. Growth this week is 34kg DM / ha which is up from 22 kg DM / ha last week. Farm cover has increased to 454kg DM/ha this week.
6. Spring Rotation planner (28/03/11)



Week Start Date	Ha/Day	Target Ha Grazed by week end	Target %	Actual Ha Grazed by week end	Actual %
15/02 - 21/02	0.20	1.40	7.0	0.76	3.8
22/02 - 28/02	0.22	2.94	14.7	2.2	11
01/03 - 07/03	0.25	4.69	23.4	3.68	18.4
08/03 - 14/03	0.29	6.72	33.5	6.05	30.2
15/03 - 21/03	0.34	9.10	45.4	9.64	48.1
22/03 - 28/03	0.41	11.97	59.7	14.76	73.6
29/03 - 04/04	0.52	15.61	77.9		
05/04 - 11/04	0.71	20.58	102.6		



7. Silage was dropped out of the diet last week with the view of running ahead of the planned area on the rotation planner. As can be seen in the table above we are now well ahead of target area grazed. This was done in order to get 3 of the wettest paddocks grazed off before the forecast rain this week (37, 39a and 39b). These were reseeded last year but flooding and cold temperatures over winter have led to severe tiller death. Grass seed was broadcast on these bare

patches before grazing and 46 units of N was applied after, this is the first application of N this area has received this year.

8. This will have the affect of finishing the first rotation 5 days earlier than planned on the 5th of April. This should not be a major issue as growth rate should increase this week with rain and milder temperatures forecast.
9. Feeding 4kg of concentrate and 11kg DM of grass / cow per day.
10. Post grazing height on the last paddock grazed was 3.1cm.
11. Second round of urea was spread this week (35 units / acre)
12. Calving started on the 10th of February, 82 % calved to date.
13. There have been 12 clinical cases of mastitis since calving started, 6 of these were first calving heifers. There was one new case of mastitis in a heifer this week.
14. Average milk yield is 21.4kg at 4.92% fat and 3.39% protein (1.78kg MS/cow), lactose 4.71%, SCC 171k, TBC 24k.

C. Critical short term actions :

- Allocating grass in 12hr blocks.
- 4kg concentrate.

www.agresearch.teagasc.ie/moorepark/



