

Ballyhaise Weekly Farm Notes - Monday 4/4/2011

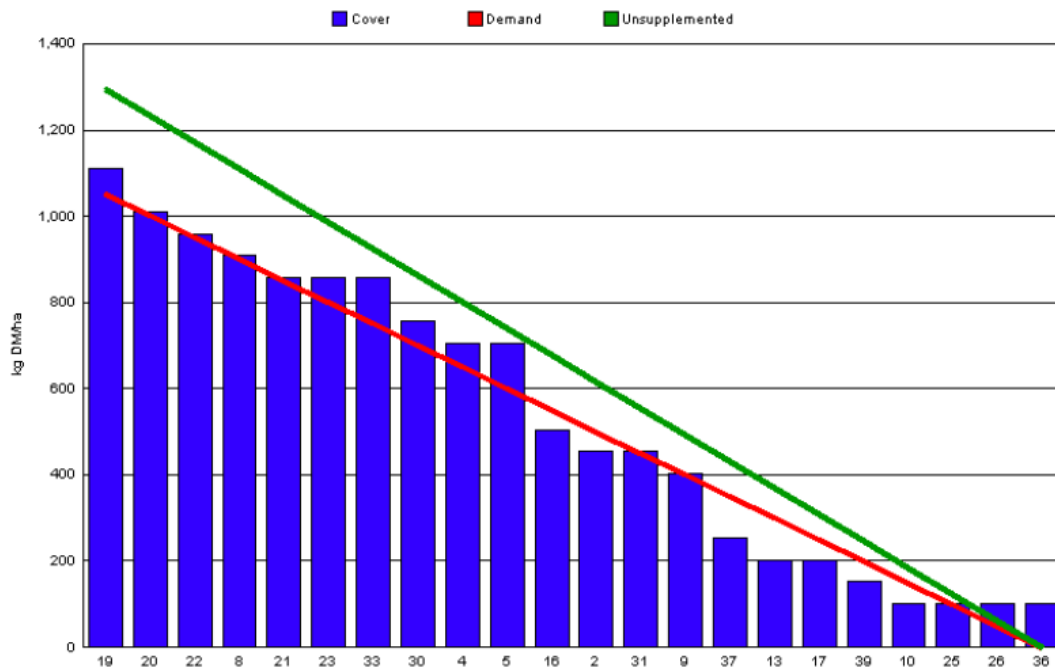
A. Critical Issues

1. Use rotation planner to allocate grass daily.
2. Maintain residual at 3.5cm.
3. Minimise risk of mastitis infection around calving.
4. Ensure each calve receives adequate colostrum.

B. On farm situation

1. Average growth was 42kgDM/ha/day, (15% DM).
2. Demand is 36kgDM/ha/day (2.79 SR * 13 kg DM /cow / day).
3. Feeding 3kg of concentrate.
4. Farm feed wedge (4/4/11).

Moorepark Animal & Grassland Research and Innovation Centre		GrazePlan - Grass Measurement Report	
Group : TEAGASC RESEARCH FARMS		Date Produced 06-APR-11	
Farm : Ballyhaise Farm		Ballyhaise BMW region systems comparison	
Date : 04-APR-11		Treatment : 3.1 stocking rate	
Rotation Length :	29	Farm Cover (kg DM/ha) :	504
Grass Allocation /cow (kg grass dry matter/LU)	13	Farm Cover (kg DM/LU) :	181
Concentrate Fed (kg/cow) :	3	Stock Rate (LU/ha) :	2.79
Silage Fed (kg DM/cow) :	0	Growth Rate :	42
N Application Rate (units/acre) :		Farm Demand (kg DM/ha/day) :	36
N Application Rate (kg/ha) :		Target pregrazing yield (kg DM/ha) :	1053
Residual Height :	3.5		
Total Livestock :	56		



5. Farm cover has increased from 454kg DM / ha last week to 504 kg DM / ha this week. Pre-grazing yields are still only 1100kg DM/ ha which is below optimal for performance (target 1300 – 1500 kg DM /ha). Although demand has increased this week with more cows calved and an extra 2kg of grass being allocated per cow, growth rate should increase rapidly with warm damp weather forecast.

6. Paddock 19 is the first paddock to be grazed in the second rotation; this paddock will be grazed on the 5th of April. This is five days ahead of target as explained previously, but good growing conditions mean that this should not be a problem.
7. Assuming a growth rate of 50kg for the week ahead this means that it will take a grazed paddock 29 days to reach a cover of 1450 kg DM / ha. Therefore the rotation length used in the wedge is 29 days. This means that we can graze 1/29th of the area each day this week. At a pre-grazing cover of 1100kg DM / ha this equates to 13.5kg DM of grass per cow per day ($20.05\text{ha} / 29 \text{ days} = 0.69 \text{ ha} / \text{day} * 1100\text{kg DM} / \text{ha} = 760\text{kg DM} / 56 \text{ cows} = 13.5 \text{ kg DM} / \text{cow} / \text{day}$).
8. Allocating grass in 12 hour blocks as ground conditions are beginning to deteriorate.
9. Feeding 3kg of concentrate to maintain intake at 16.5 kg DM / cow / day.
10. Post grazing height on the last paddock grazed was 3.4cm.
11. Second round of urea was spread last week (35 units / acre).
12. Calving started on the 10th of February, 88 % calved to date.
13. There have been 12 clinical cases of mastitis since calving started, 6 of these were first calving heifers. There was one new case of mastitis in a heifer this week.
14. Average milk yield is 23.1kg at 4.33% fat and 3.39% protein (1.78kg MS/cow), lactose 4.71%, SCC 228k, TBC 24k.
15. Bulling heifers were weighed and turned out to grass last week. The Frisian heifers averaged 295kg and the Jersey cross heifers averaged 270kg. Both batches are about 10kg behind target. They are getting 1 kg of dairy nuts and fresh allocation of grass every 4-5 days. They are vaccinated for BVD and Lepto and will get their booster shot next week.

C. Critical short term actions :

- Allocating grass in 12hr blocks.
- 3kg concentrate.

www.agresearch.teagasc.ie/moorepark/



