

Ballyhaise Weekly Farm Notes - Monday 27/4/2011

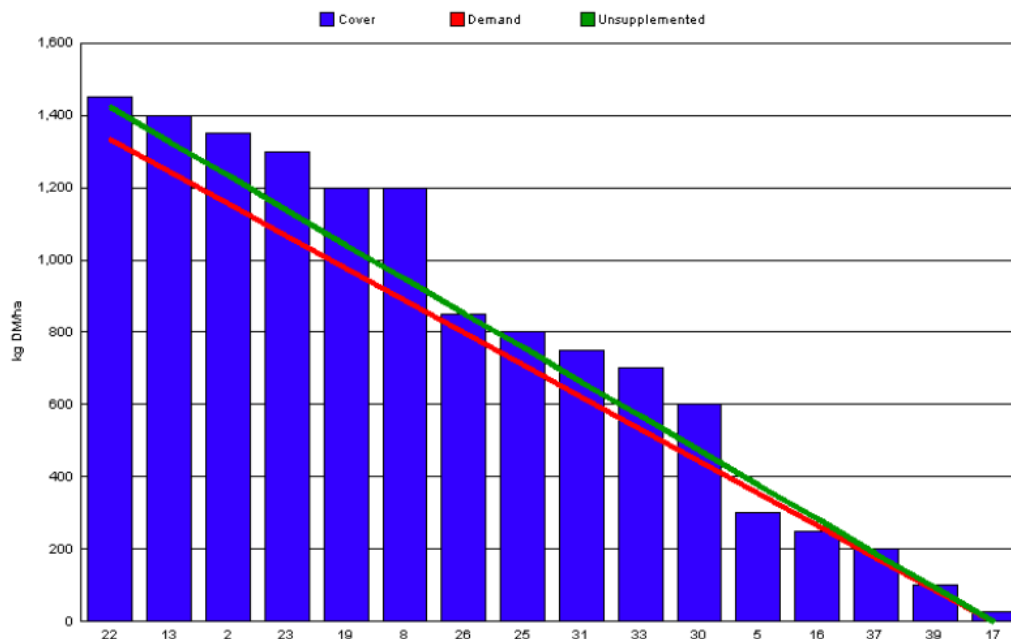
A. Critical Issues

1. **Maintain residual at 3.5cm.**
2. **Monitor pre-breeding heats.**
3. **Ensure cows and heifers are on rising plane of nutrition.**

B. On farm situation

1. Average growth was 62kgDM/ha/day, (18% DM).
2. Demand is 64kgDM/ha/day (4.24 SR * 15 kg DM /cow / day).
3. Soil temperature is 12°C.
4. Total rainfall for the past week was 2mm.
5. Feeding 1kg of concentrate.
6. Farm feed wedge (27/4/11).

Moorepark Animal & Grassland Research and Innovation Centre		GrazePlan - Grass Measurement Report	
Group : TEAGASC RESEARCH FARMS		Date Produced 28-APR-11	
Farm : Ballyhaise Farm		Ballyhaise BMW region systems comparison	
Date : 27-APR-11		Treatment : 3.1 stocking rate	
Rotation Length :	21	Farm Cover (kg DM/ha) :	671
Grass Allocation /cow (kg grass dry matter/LU)	15	Farm Cover (kg DM/LU) :	158
Concentrate Fed (kg/cow) :	1	Stock Rate (LU/ha) :	4.24
Silage Fed (kg DM/cow) :	0	Growth Rate :	62
N Application Rate (units/acre) :		Farm Demand (kg DM/ha/day) :	64
N Application Rate (kg/ha) :		Target pregrazing yield (kg DM/ha) :	1336
Residual Height :	3.5		
Total Livestock (LU) :	65		



7. Growth rate has increased from 45 kg DM / ha last week to 62kg DM / ha. Soil moisture deficit is not a major problem yet and is only evident on

paddocks which have been grazed in the last week. Pre- grazing yields are ideal at 1450 kg DM / ha and good graze-out is being achieved (3.5cm).

8. Grazing conditions are excellent so we used this opportunity to graze off the heaviest part of the farm. Some of this area was re-sown with grass seed at the end of March to fill in bare patches left after flooding over the winter. By grazing down the established plants this will give the seedlings a chance to compete and will also help them to tiller. About half this area was sub-soil after grazing.
9. Two more paddocks have been skipped over for silage this week in order to keep pre-grazing covers under control and also keep farm demand (64kg DM / ha) in line with growth. This is a total of 23% of the available area closed, 15% for silage and 8% for reseeding.
10. The two paddocks to be reseeded will be sprayed off this week and a light crop of bales will be taken off them before reseeding.
11. Allocating grass in 36 hour blocks.
12. Feeding 1kg of concentrate to carry sufficient Cal Mag.
13. Post grazing height on the last paddock grazed was 3.8cm.
14. Following cows with 27 units of N (Can) after grazing.
15. All cows are calved and milking with 12 surplus animals sold last week.
16. There have been 15 clinical cases of mastitis since calving started, 6 of these were first calving heifers. There was one severe case of mastitis this week in a 3rd lactation cow.
17. We will start AI on the heifers next Thursday and the following Monday on the cows. We will use tail paint on the cows and scratch cards and a vasectomised bull with a chin ball on the heifers.
18. Average milk yield is 24.1kg at 4.71% fat and 3.54% protein (2kg MS/cow), lactose 4.87%, SCC 180k, TBC 24k.
19. Average days in milk are 57 days with 81kg of solids produced per cow.

C. Critical short term actions :

- Allocating grass in 36hr blocks.
- Feeding 1kg of concentrate.

www.agresearch.teagasc.ie/moorepark/



Week:27/04/11	HG system	HS system
Stocking rate (cows/ha)	3.1	4.6
Milk yield (kg/cow/day)	24.2	23.73
% Fat	4.71	4.49
% Protein	3.54	3.54
% Lactose	4.87	4.87
Milk solids (kg/cow/day)	2	1.91
Supplement (kg/cow/day)		
Concentrate	1	3
Silage	0	0
Cumulative		
Milk yield (kg/cow)	943	909
% Fat	5.14	4.85
% Protein	3.62	3.53
% Lactose	4.83	4.75
Milk solids (kg/cow)	81	76
Bodyweight (kg)	450	453
Body Condition Score	3.0	2.9
Supplement (kg/cow)		
Concentrate	151	219
Silage to milking cows (kg DM/cow)	77	140
Maize (kg DM/cow)	0	0
Conserved silage (kg DM/cow)	474	95
Total silage fed (kg DM/cow)	1100	1400