

Ballyhaise Weekly Farm Notes - Monday 9/5/2011

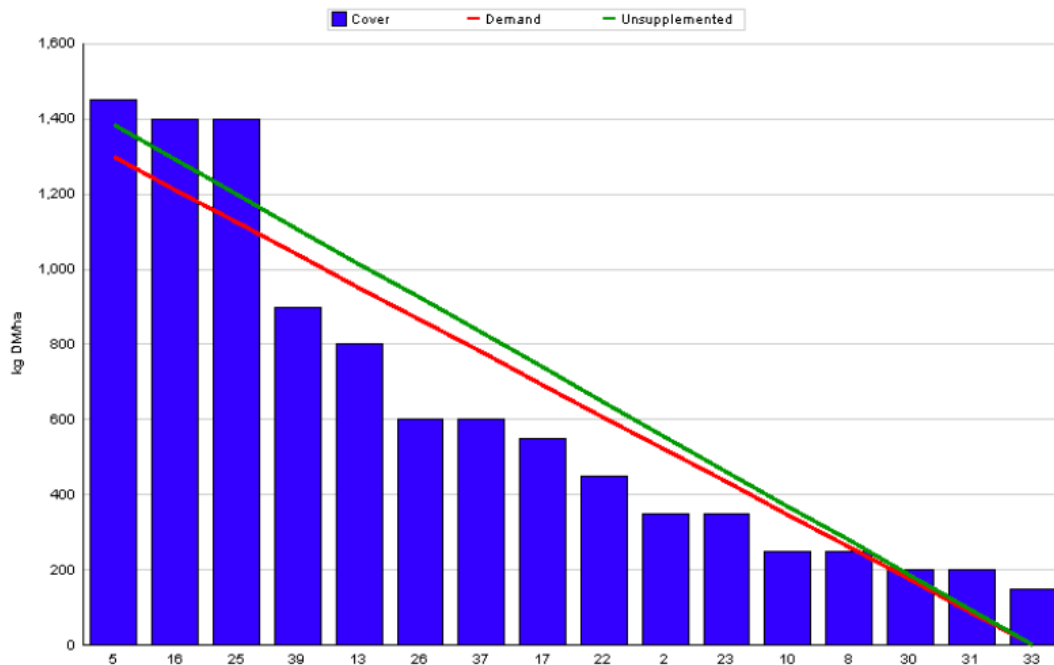
A. Critical Issues

1. **Maintain residual at 3.5cm.**
2. **Monitor pre-breeding heats.**
3. **Ensure cows and heifers are on rising plane of nutrition.**

B. On farm situation

1. Average growth was 56kgDM/ha/day, (18% DM).
2. Demand is 62kgDM/ha/day (4.12 SR * 15 kg DM /cow / day).
3. Soil temperature is 12.5°C.
4. Total rainfall for the past week was 15.5mm.
5. Feeding 1kg of concentrate.
6. Farm feed wedge (9/5/11).

Moorepark Animal & Grassland Research and Innovation Centre		GrazePlan - Grass Measurement Report	
Group : TEAGASC RESEARCH FARMS		Date Produced 11-MAY-11	
Farm : Ballyhaise Farm		Ballyhaise BMW region systems comparison	
Date : 09-MAY-11		Treatment : 3.1 stocking rate	
Rotation Length :	21	Farm Cover (kg DM/ha) :	612
Grass Allocation /cow (kg grass dry matter/LU)	15	Farm Cover (kg DM/LU) :	149
Concentrate Fed (kg/cow) :	1		
Silage Fed (kg DM/cow) :	0		
N Application Rate (units/acre) :		Stock Rate (LU/ha) :	4.12
N Application Rate (kg/ha) :		Growth Rate :	56
Residual Height :	3.5	Farm Demand (kg DM/ha/day) :	62
Total Livestock (LU) :	63	Target pregrazing yield (kg DM/ha) :	1298



7. Growth rate has decreased from 74kg DM / ha last week to 56kg DM / ha this week, this was due to soil moisture deficit but we have had 15mm of rain over the past 4 days which has had an immediate affect with pasture becoming visibly greener.
8. Farm demand is slightly above current growth rate at 62kg DM / ha, rotation length will be monitored closely over the week to make sure that farm cover is not reduced further.
9. Paddock 19 was skipped last week and paddocks 10 and 8 were baled and are now back in the grazing rotation. This leaves a total of 23% of the available area closed, 15% for silage and 8% for reseeding. Two of these paddocks are ready for cutting as soon as weather improves.
10. Allocating grass in 36 hour blocks. Average post grazing residual this week was 3.8cm.
11. Feeding 1kg of concentrate to carry sufficient Cal Mag.
12. Following cows with 27 units of N (Can) after grazing.
13. All cows are calved and milking with 12 surplus animals sold.
14. There have been 15 clinical cases of mastitis since calving started, 6 of these were first calving heifers. No new cases of mastitis this week.
15. First batch of calves were weaned this week at an average weight of 78kg, this are all jersey crossbreds.
16. Heifers were weighed last week prior to the start of breeding, the Friesian heifers averaged 321kg and the Jersey crossbreds averaged 299kg. Started breeding to AI on the 5th of May and heifers not served by the 12th will get a shot of PG.
17. Pre-breeding scan was done last week, there were 4 cows with severe infections (G3), which have been washed out, and 3 cows which were not cycling have been treated with progesterone based treatments.
18. Average milk yield is 26kg at 4.08% fat and 3.39% protein (1.95kg MS/cow), lactose 4.87%, SCC 180k, TBC 3k.
19. Average days in milk are 71 days with 110kg of solids produced per cow.

C. Critical short term actions :

- Allocating grass in 36hr blocks.
- Feeding 1kg of concentrate.

www.agresearch.teagasc.ie/moorepark/

Week:8/05/11	HG system	HS system
Stocking rate (cows/ha)	3.1	4.6
Milk yield (kg/cow/day)	26.0	24.27
% Fat	4.08	4.49
% Protein	3.39	3.54
% Lactose	4.87	4.86
Milk solids (kg/cow/day)	1.95	1.95
Supplement (kg/cow/day)		
Concentrate	1	1
Silage	0	0
Cumulative		
Milk yield (kg/cow)	1301	1249
% Fat	5.01	4.82
% Protein	3.59	3.57
% Lactose	4.85	4.84
Milk solids (kg/cow)	110	104
Bodyweight (kg)	450	453
Body Condition Score	3.0	2.9
Supplement (kg/cow)		
Concentrate	172	252
Silage to milking cows (kg DM/cow)	77	140
Maize (kg DM/cow)	0	0
Conserved silage (kg DM/cow)	474	95
Total silage fed (kg DM/cow)	1100	1400