

## Ballyhaise Weekly Farm Notes – Monday 16/5/2011

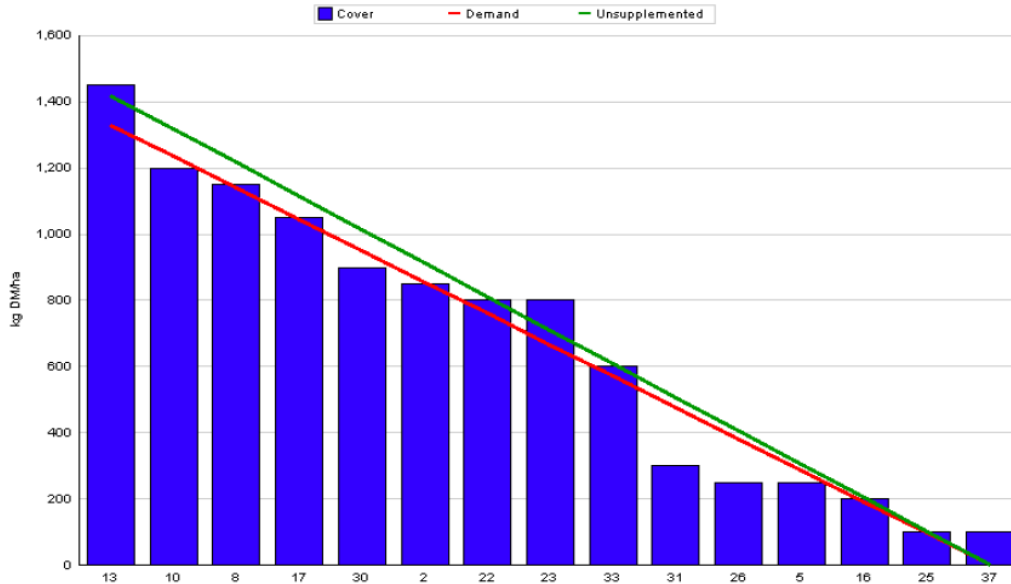
### A. Critical Issues

1. **Maintain residual at 3.5cm.**
2. **Ensure cows and heifers are on rising plane of nutrition.**
3. **Heat detection and breeding management.**

### B. On farm situation

1. Average growth was 85kgDM/ha/day, (15% DM).
2. Demand is 74kgDM/ha/day (4.93 SR \* 15 kg DM /cow / day).
3. Soil temperature is 12.5°C.
4. Total rainfall for the past week was 16mm.
5. Feeding 1kg of concentrate.
6. Farm feed wedge (16/5/11).

Moorepark Animal & Grassland Research and Innovation Centre		GrazePlan - Grass Measurement Report	
Group : TEAGASC RESEARCH FARMS		Date Produced 18-MAY-11	
Farm : Ballyhaise Farm		Ballyhaise BMW region systems comparison	
Date : 16-MAY-11		Treatment : 3.1 stocking rate	
Rotation Length :	18	Farm Cover (kg DM/ha) :	664
Grass Allocation /cow (kg grass dry matter/LU)	15	Farm Cover (kg DM/LU) :	135
Concentrate Fed (kg/cow) :	1		
Silage Fed (kg DM/cow) :	0		
N Application Rate (units/acre) :		Stock Rate (LU/ha) :	4.93
N Application Rate (kg/ha) :		Growth Rate :	85
Residual Height :	3.5	Farm Demand (kg DM/ha/day) :	74
Total Livestock (LU) :	63	Target pregrazing yield (kg DM/ha) :	1330



7. Growth rate has increased from 56kg DM / ha last week to 85kg DM / ha this week. Rainfall over the past 10 days has totalled 25mm which has given growth rates a major boost.
8. Paddock 39 has been skipped because the cover was 1750kg DM / ha and was too strong for grazing. This has lifted the stocking rate to 4.9 cows per ha. This is not a problem in the short term as growing conditions are excellent but if

growth rates decrease over the coming weeks a serious deficit could occur. For this reason a number of paddocks skipped over for silage will need to be baled to get more area back in the grazing rotation which will allow more flexibility in the coming weeks. Weather conditions are not ideal for saving silage but maintaining quality pasture ahead of the grazing herd is more important than the DM % of a small number of bales.

9. In total 29% of the area is now closed, 8% for reseeding and 21% for silage.
10. Paddock residency time ranges from 24 to 48 hours. Average post grazing residual this week was 4.0cm.
11. Feeding 1kg of concentrate to carry sufficient Cal Mag.
12. Following cows with 27 units of N (Can) after grazing.
13. There have been 15 clinical cases of mastitis since calving started, 6 of these were first calving heifers. No new cases of mastitis this week.
14. Second batch of calves were weaned this week at an average weight of 75kg, these are all jersey crossbreds. 63% of heifer calves have been weaned to date.
15. Heifers were weighed prior to the start of breeding, the Friesian heifers averaged 321kg and the Jersey crossbreds averaged 299kg. Started breeding to AI on the 5<sup>th</sup> of May, all heifers were served once over ten days.
16. Started breeding season on the 10<sup>th</sup> of May with the milking cows. Submission rate for the first seven days of breeding is 32%. Tail paint is being used as a heat detection aid and is topped up twice a week. Bulls being used are-  
FR – MWW, WNE, WDS, MJD.  
JE – SYI, HWY, WFM, RVW, PKU, TIO.
17. Average milk yield is 25.3kg at 4.19% fat and 3.35% protein (1.9kg MS/cow), lactose 4.87%, SCC 200k, TBC 3k.
18. Average days in milk are 78 days with 122kg of solids produced per cow.

### C. Critical short term actions :

- Allocating grass in 36hr blocks.
- Feeding 1kg of concentrate.

[www.agresearch.teagasc.ie/moorepark/](http://www.agresearch.teagasc.ie/moorepark/)



<b>Week:15/05/11</b>	<b>HG system</b>	<b>HS system</b>
<b>Stocking rate (cows/ha)</b>	<b>3.1</b>	<b>4.6</b>
Milk yield (kg/cow/day)	25.3	24.07
% Fat	4.19	4.41
% Protein	3.35	3.49
% Lactose	4.92	4.95
Milk solids (kg/cow/day)	1.9	1.89
Supplement (kg/cow/day)		
Concentrate	1	1
Silage	0	0
<b>Cumulative</b>		
Milk yield (kg/cow)	1466	1453
% Fat	4.87	4.71
% Protein	3.56	3.52
% Lactose	4.86	4.87
Milk solids (kg/cow)	122	119
Bodyweight (kg)	450	453
Body Condition Score	3.0	2.9
Supplement (kg/cow)		
Concentrate	179	252
Silage to milking cows (kg DM/cow)	77	140
Maize (kg DM/cow)	0	0
Conserved silage (kg DM/cow)	474	95
Total silage fed ( kg DM/cow)	1100	1400