

Ballyhaise Weekly Farm Notes – Monday 13/6/2011

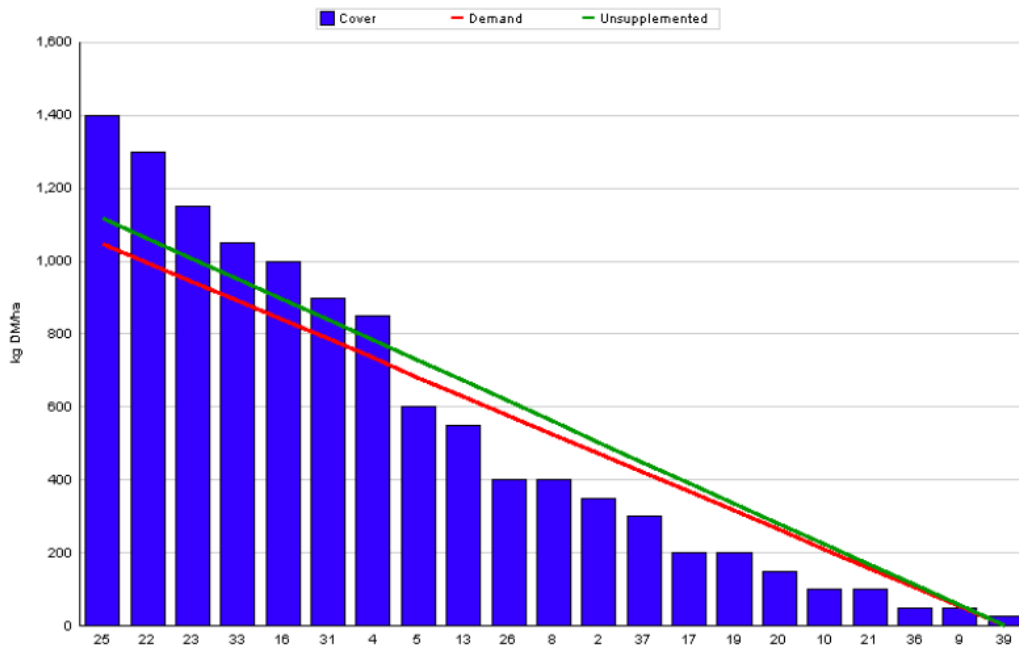
A. Critical Issues

1. **Maintain residual at 3.5cm.**
2. **Ensure cows and heifers are on rising plane of nutrition.**
3. **Heat detection and breeding management.**

B. On farm situation

1. Average growth was 53kgDM/ha/day, (15% DM).
2. Demand is 50kgDM/ha/day (3.33 SR * 15 kg DM /cow / day).
3. Soil temperature is 12°C.
4. Total rainfall for the past week was 27mm.
5. Feeding 1kg of concentrate.
6. Farm feed wedge (13/6/11).

Moorepark Animal & Grassland Research and Innovation Centre		GrazePlan - Grass Measurement Report	
Group : TEAGASC RESEARCH FARMS		Date Produced 14-JUN-11	
Farm : Ballyhaise Farm		Ballyhaise BMW region systems comparison	
Date : 13-JUN-11		Treatment : 3.1 stocking rate	
Rotation Length :	21	Farm Cover (kg DM/ha) :	494
Grass Allocation /cow (kg grass dry matter/LU	15	Farm Cover (kg DM/LU) :	148
Concentrate Fed (kg/cow) :	1	Stock Rate (LU/ha) :	3.33
Silage Fed (kg DM/cow) :	0	Growth Rate :	53
N Application Rate (units/acre) :		Farm Demand (kg DM/ha/day) :	50
N Application Rate (kg/ha) :		Target pregrazing yield (kg DM/ha) :	1048
Residual Height :	3.5		
Total Livestock (LU) :	63		



7. Growth rate this week was 53kg DM / ha which is similar to last week 57kg DM / ha. This is not due to a moisture deficit as there has been adequate rain this week. Cold temperatures and harsh winds are restricting growth rates and as can be seen on the wedge paddocks that have been cut for silage are slow to recover.

8. Since all paddocks are back in the grazing round the farm demand has dropped to 50kgDM/ha/day (3.33 SR * 15 kg DM /cow / day). Therefore no more paddocks will be taken out for silage until growth rate lifts above demand even though there are a number of paddocks over the demand line.
9. There is more wet weather forecast for this week but temperatures are set to rise so this should help increase growth rate above current levels. This will be closely monitored and paddocks will be skipped once pre-grazing yields rise above 1500kg DM / ha.
10. In total 5% of the area is now closed for silage.
11. Paddock residency time ranges from 24 to 48 hours.
12. Feeding 1 kg of concentrate to carry sufficient Cal Mag.
13. Following cows with 27 units of N (Can) after grazing.
14. There have been 16 clinical cases of mastitis since calving started, 6 of these were first calving heifers. No new cases of mastitis this week.
15. Heifers were weighed prior to the start of breeding, the Friesian heifers averaged 321kg and the Jersey crossbreds averaged 299kg. Started breeding to AI on the 5th of May, all heifers were served once over 12 days. Stock bull is now with the heifers.
16. The average body condition score of the herd is 2.95, with 6% of the animals with a score less than 2.75 and 2% with a score greater than 3.25.
17. Started breeding season on the 10th of May with the milking cows. Submission rate for the first 21 days of breeding was 90%. Tail paint is being used as a heat detection aid and is topped up twice a week. Two teaser bulls were introduced last week to help pick up repeats. Bulls being used are-
FR – MWW, WNE, WDS, MJD.
JE – SYI, HWY, WFM, RVW, PKU, TIO.
18. After 26 days of breeding there were 4 cows which had not been served. These were scanned last week, two were injected with PG and were served over the following 3 days, one was on heat the following day and the other will not be suitable for service for a number of weeks.
19. This is week 6 of the breeding season, all cows will be served with short gestation Jersey straws in week 7 and the stock bulls will be introduced in week 8.
20. Average milk yield is 22.94kg at 4.32% fat and 3.36% protein (1.76kg MS/cow), lactose 4.87%, SCC 120k, TBC 15k.
21. Average days in milk are 99 days with 175kg of solids produced per cow.

C. Critical short term actions :

- Allocating grass in 36hr blocks.
- Feeding 1kg of concentrate.



Week:12/06/11	HG system	HS system
Stocking rate (cows/ha)	3.1	4.6
Milk yield (kg/cow/day)	22.94	23.02
% Fat	4.32	4.34
% Protein	3.36	3.58
% Lactose	4.87	4.92
Milk solids (kg/cow/day)	1.76	1.80
Supplement (kg/cow/day)		
Concentrate	1	1
Silage	0	0
Cumulative		
Milk yield (kg/cow)	2135	2076
% Fat	4.66	4.57
% Protein	3.56	3.52
% Lactose	4.9	4.87
Milk solids (kg/cow)	175	168
Bodyweight (kg)	491	491
Body Condition Score	2.94	2.92
Supplement (kg/cow)		
Concentrate	205	271
Silage to milking cows (kg DM/cow)	77	140
Maize (kg DM/cow)	0	0
Conserved silage (kg DM/cow)	474	95
Total silage fed (kg DM/cow)	1100	1400