

Ballyhaise Weekly Farm Notes – Monday 20/06/2011

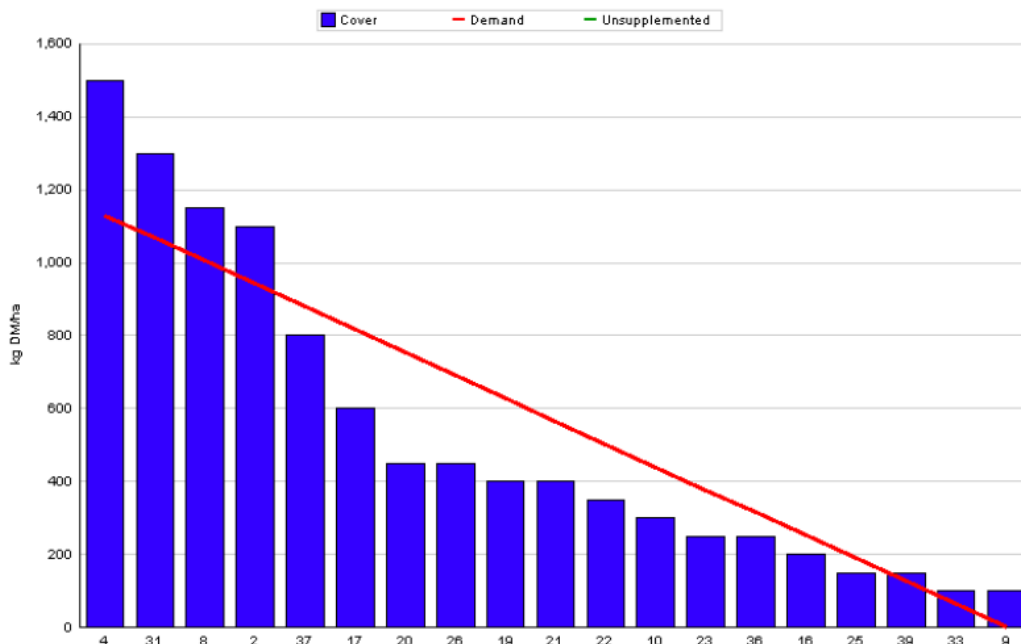
A. Critical Issues

1. **Maintain residual at 3.5cm.**
2. **Ensure cows and heifers are on rising plane of nutrition.**
3. **Heat detection and breeding management.**

B. On farm situation

1. Average growth was 45kg DM/ha/day, (15% DM).
2. Demand is 54kgDM/ha/day (3.59 SR * 15 kg DM /cow / day).
3. Soil temperature is 13°C.
4. Total rainfall for the past week was 23mm.
5. Feeding 1kg of concentrate.
6. Farm feed wedge (20/6/11).

| Moorepark Animal & Grassland Research and Innovation Centre | | GrazePlan - Grass Measurement Report | |
|---|-----|--|------|
| Group : TEAGASC RESEARCH FARMS | | Date Produced 22-JUN-11 | |
| Farm : Ballyhaise Farm | | Ballyhaise BMW region systems comparison | |
| Date : 20-JUN-11 | | Treatment : 3.1 stocking rate | |
| Rotation Length : | 21 | Farm Cover (kg DM/ha) : | 493 |
| Grass Allocation /cow (kg grass dry matter/LU) | 15 | Farm Cover (kg DM/LU) : | 137 |
| Concentrate Fed (kg/cow) : | 1 | | |
| Silage Fed (kg DM/cow) : | 0 | | |
| N Application Rate (units/acre) : | | Stock Rate (LU/ha) : | 3.59 |
| N Application Rate (kg/ha) : | | Growth Rate : | 45 |
| Residual Height : | 3.5 | Farm Demand (kg DM/ha/day) : | 54 |
| Total Livestock (LU) : | 63 | Target pregrazing yield (kg DM/ha) : | 1130 |



7. Growth rate this week was 45kg DM / ha which is lower than last week 53kg DM / ha. This is due to cold temperatures although this has improved over the past few days. Even though demand is greater than last weeks growth rate no extra concentrate is being fed. As can be seen from the wedge the next four paddocks to be grazed are above the demand line. The situation will be assessed again at the weekend and if extra concentrate is required to maintain rotation length they will be introduced at that stage.

8. There are two paddocks out for silage this week (8% of area) and will be cut as soon as weather permits. One of these paddocks was skipped 3 weeks ago and has a cover of 3500kg DM / ha. The other is a paddock which has not been grazed properly in the last two rotations and needs to be cleaned off, it has a cover of 1500kg DM / ha of steamy material.
9. Ground conditions are still reasonable but some of the wetter parts of the farm are starting to show the effects. Average post grazing residual for the week was 4.1 cm.
10. Paddock residency time ranges from 24 to 48 hours.
11. Feeding 1 kg of concentrate to carry sufficient Cal Mag.
12. Following cows with 27 units of N (Can) after grazing.
13. There have been 16 clinical cases of mastitis since calving started, 6 of these were first calving heifers. No new cases of mastitis this week.
14. Heifers were weighed prior to the start of breeding, the Friesian heifers averaged 321kg and the Jersey crossbreeds averaged 299kg. Started breeding to AI on the 5th of May, all heifers were served once over 12 days. Stock bull is now with the heifers.
15. The average body condition score of the herd is 2.95, with 6% of the animals with a score less than 2.75 and 2% with a score greater than 3.25.
16. Started breeding season on the 10th of May with the milking cows. Submission rate for the first 24 days of breeding was 93%. Tail paint is being used as a heat detection aid and is topped up twice a week. Two teaser bulls were introduced last week to help pick up repeats. Bulls being used are-
FR – MWW, WNE, WDS, MJD.
JE – SYI, HWY, WFM, RVW, PKU, TIO.
17. After 26 days of breeding there were 4 cows which had not been served. These were scanned two weeks ago, two were injected with PG and were served over the following 3 days, one was on heat the following day and the other will not be suitable for service for a number of weeks.
18. This is week 7 of the breeding season, all cows will be served with short gestation Jersey straws this week and the stock bulls will be introduced next week. 24 day non-return rate is 58%.
19. Average milk yield is 22.19kg at 4.18% fat and 3.43% protein (1.69kg MS/cow), lactose 4.91%, SCC 141k, TBC 3k.
20. Average days in milk are 106 days with 186 kg of solids produced per cow.

C. Critical short term actions :

- Allocating grass in 36hr blocks.
- Feeding 1kg of concentrate.
- Heat detection.



| Week:19/06/11 | HG system | HS system |
|------------------------------------|------------------|------------------|
| Stocking rate (cows/ha) | 3.1 | 4.6 |
| Milk yield (kg/cow/day) | 22.19 | 21.53 |
| % Fat | 4.18 | 4.32 |
| % Protein | 3.43 | 3.43 |
| % Lactose | 4.91 | 4.92 |
| Milk solids (kg/cow/day) | 1.69 | 1.66 |
| Supplement (kg/cow/day) | | |
| Concentrate | 1 | 1 |
| Silage | 0 | 0 |
| Cumulative | | |
| Milk yield (kg/cow) | 2290 | 2226 |
| % Fat | 4.59 | 4.55 |
| % Protein | 3.54 | 3.50 |
| % Lactose | 4.91 | 4.87 |
| Milk solids (kg/cow) | 186 | 179 |
| Bodyweight (kg) | 491 | 491 |
| Body Condition Score | 2.94 | 2.92 |
| Supplement (kg/cow) | | |
| Concentrate | 212 | 278 |
| Silage to milking cows (kg DM/cow) | 77 | 140 |
| Maize (kg DM/cow) | 0 | 0 |
| Conserved silage (kg DM/cow) | 474 | 95 |
| Total silage fed (kg DM/cow) | 1100 | 1400 |