

Ballyhaise Weekly Farm Notes – Monday 27/06/2011

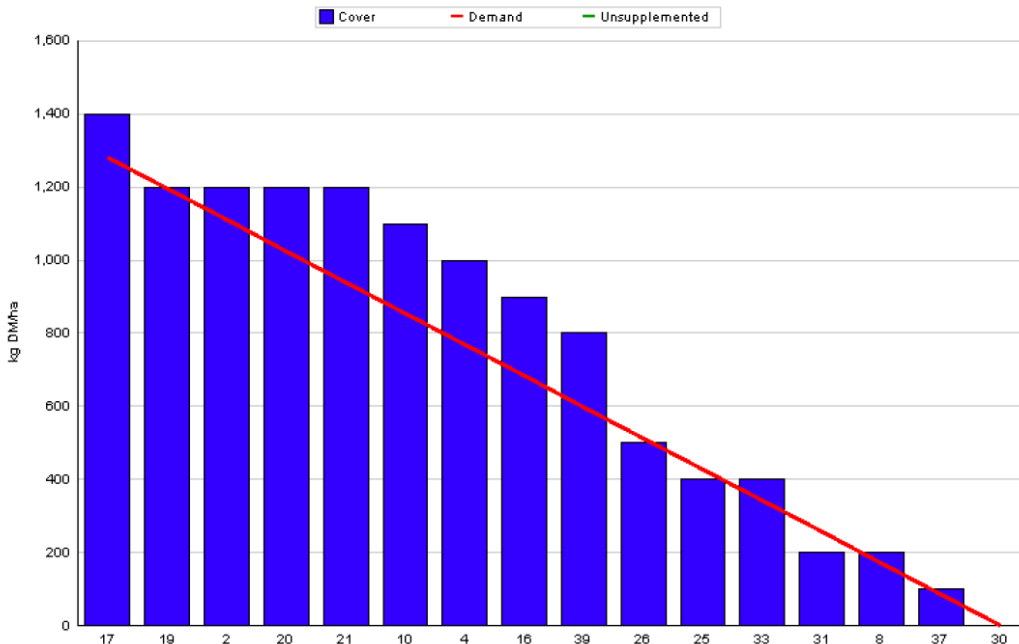
A. Critical Issues

1. **Maintain residual at 3.5cm.**
2. **Ensure cows and heifers are on rising plane of nutrition.**
3. **Heat detection and breeding management.**

B. On farm situation

1. Average growth was 85kg DM/ha/day, (17% DM).
2. Demand is 61kgDM/ha/day (4.07 SR * 15 kg DM /cow / day).
3. Soil temperature is 15C.
4. Total rainfall for the past week was 22.6mm.
5. Feeding 1kg of concentrate.
6. Farm feed wedge (27/6/11).

Moorepark Animal & Grassland Research and Innovation Centre		GrazePlan - Grass Measurement Report	
Group : TEAGASC RESEARCH FARMS		Date Produced 29-JUN-11	
Farm : Ballyhaise Farm		Ballyhaise BMW region systems comparison	
Date : 27-JUN-11		Treatment : 3.1 stocking rate	
Rotation Length :	21	Farm Cover (kg DM/ha) :	711
Grass Allocation /cow (kg grass dry matter/LU)	15	Farm Cover (kg DM/LU) :	175
Concentrate Fed (kg/cow) :	1	Stock Rate (LU/ha) :	4.07
Silage Fed (kg DM/cow) :	0	Growth Rate :	85
N Application Rate (units/acre) :		Farm Demand (kg DM/ha/day) :	61
N Application Rate (kg/ha) :		Target pregrazing yield (kg DM/ha) :	1282
Residual Height :	3.5		
Total Livestock (LU) :	63		



7. Growth rate this week was 85kg DM / ha which is higher than last week 45kg DM / ha. Good rainfall and an increase in air temperatures has helped to increase growth rates. Last week 90% of the area was available for grazing which meant that demand was low. Because of the sudden increase in growth rates 4.58 has been closed for silage to help to increase the demand. There is still a surplus evident from the wedge but the highest five paddocks are all

after grass and are excellent quality. The situation will be assessed on Friday and more paddocks may need to be removed from the rotation at that stage.

8. There were two paddocks cut for silage this week (8% of area) .One of these paddocks was skipped 3 weeks ago and has a cover of 3500kg DM / ha. The other is a paddock which has not been grazed properly in the last two rotations and needs to be cleaned off, it has a cover of 1500kg DM / ha of steamy material.
9. Ground conditions are still reasonable but some of the wetter parts of the farm are starting to show the effects. Average post grazing residual for the week was 4.1 cm.
10. Paddock residency time ranges from 24 to 48 hours.
11. Feeding 1 kg of concentrate to carry sufficient Cal Mag.
12. Following cows with 20 units of N (Can) after grazing.
13. There have been 16 clinical cases of mastitis since calving started, 6 of these were first calving heifers. No new cases of mastitis this week.
14. Heifers were weighed prior to the start of breeding, the Friesian heifers averaged 321kg and the Jersey crossbreds averaged 299kg. Started breeding to AI on the 5th of May, all heifers were served once over 12 days. Stock bull is now with the heifers.
15. The average body condition score of the herd is 2.95, with 6% of the animals with a score less than 2.75 and 2% with a score greater than 3.25.
16. Started breeding season on the 10th of May with the milking cows. Submission rate for the first 24 days of breeding was 93%. Tail paint is being used as a heat detection aid and is topped up twice a week. Two teaser bulls were introduced last week to help pick up repeats. Bulls being used are-
FR – MWW, WNE, WDS, MJD.
JE – SYI, HWY, WFM, RVW, PKU, TIO.
17. After 26 days of breeding there were 4 cows which had not been served. These were scanned two weeks ago, two were injected with PG and were served over the following 3 days, one was on heat the following day and the other will not be suitable for service for a number of weeks.
18. This is week 8 of the breeding season, stock bulls will be introduced this week and AI will continue also to cover any start up issues with the bulls. The 24 day non-return rate is 54%.
19. Average milk yield is 22.19kg at 3.98% fat and 3.48% protein (1.64kg MS/cow), lactose 4.91%, SCC 138k, TBC 3k.
20. Average days in milk are 113 days with 197 kg of solids produced per cow.

C. Critical short term actions :

- Allocating grass in 36hr blocks.
- Feeding 1kg of concentrate.
- Monitor stock bull performance.



Week:26/06/11	HG system	HS system
Stocking rate (cows/ha)	3.1	4.6
Milk yield (kg/cow/day)	22.19	21.53
% Fat	3.98	4.31
% Protein	3.48	3.44
% Lactose	4.85	4.92
Milk solids (kg/cow/day)	1.64	1.66
Supplement (kg/cow/day)		
Concentrate	1	1
Silage	0	0
Cumulative		
Milk yield (kg/cow)	2445	2377
% Fat	4.53	4.52
% Protein	3.54	3.49
% Lactose	4.91	4.87
Milk solids (kg/cow)	197	190
Bodyweight (kg)	491	491
Body Condition Score	2.94	2.92
Supplement (kg/cow)		
Concentrate	218	283
Silage to milking cows (kg DM/cow)	77	140
Maize (kg DM/cow)	0	0
Conserved silage (kg DM/cow)	730	120
Total silage fed (kg DM/cow)	1100	1400