

Ballyhaise Weekly Farm Notes – Monday 11/07/2011

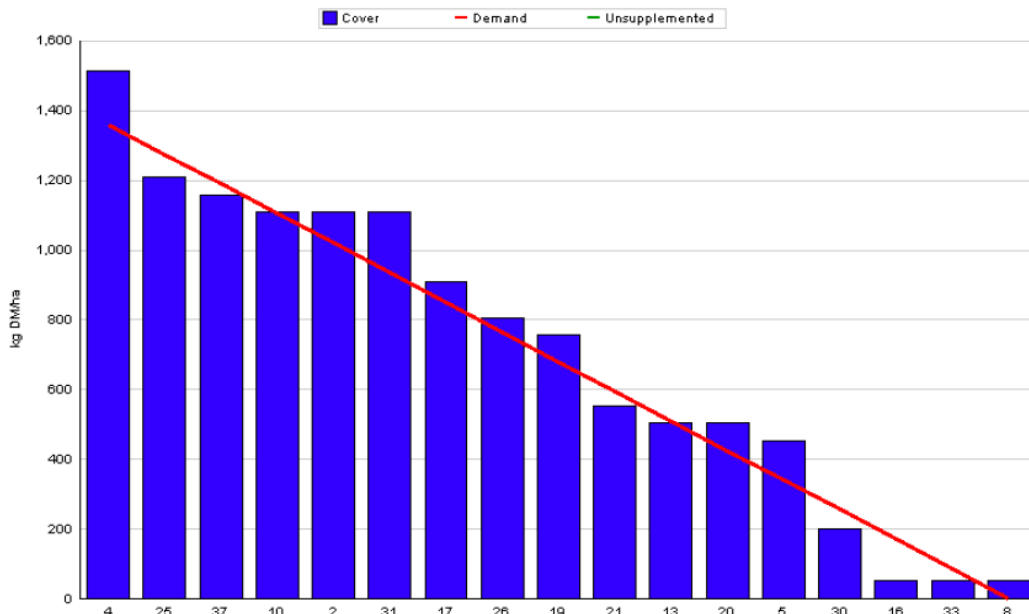
A. Critical Issues

1. **Maintain residual at 3.5cm.**
2. **Monitor grass quality and remove surpluses.**
3. **Monitor stock bulls.**

B. On farm situation

1. Average growth was 72kg DM/ha/day, (17% DM).
2. Demand is 65kgDM/ha/day (4.32 SR * 15 kg DM /cow / day).
3. Farm feed wedge (11/7/11).

Moorepark Animal & Grassland Research and Innovation Centre		GrazePlan - Grass Measurement Report	
Group : TEAGASC RESEARCH FARMS		Date Produced 13-JUL-11	
Farm : Ballyhaise Farm		Ballyhaise BMW region systems comparison	
Date : 11-JUL-11		Treatment : 3.1 stocking rate	
Rotation Length : 21 Grass Allocation /cow (kg grass dry matter/LU) : 15 Concentrate Fed (kg/cow) : 1 Silage Fed (kg DM/cow) : 0 N Application Rate (units/acre) : N Application Rate (kg/ha) : Residual Height : 3.5 Total Livestock (LU) : 62	Farm Cover (kg DM/ha) : 678 Farm Cover (kg DM/LU) : 157 Stock Rate (LU/ha) : 4.32 Growth Rate : 72 Farm Demand (kg DM/ha/day) : 65 Target pregrazing yield (kg DM/ha) : 1360		



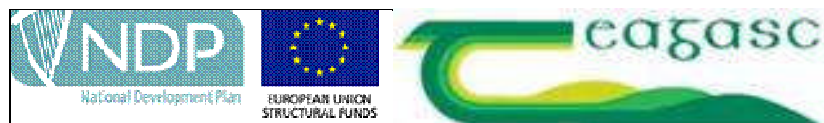
4. Growth rate this week was 72kg DM / ha which is slightly lower than last week at 85kg DM / ha. This is slightly above the demand which is 65kg DM / ha / day. Paddocks 33 and 16 were mowed today and will be baled in two days time. Both paddocks had a cover of 2400 kg DM / ha. Pre-grazing covers are within the target range of between 1300 and 1500 kg DM / ha. This will be assessed before the weekend to see if more paddocks can be skipped.

5. There are three paddocks skipped for silage this week (14% of area). The grass quality has been poor on these paddocks over the last number of rotations. There is a further 8% of the area sprayed off for reseeding.
6. Average post grazing residual for the week was 3.7cm.
7. Paddock residency time ranges from 24 to 48 hours.
8. Feeding 0.5 kg of concentrate.
9. Following cows with 18 units of N (Can) after grazing.
10. There have been 16 clinical cases of mastitis since calving started, 6 of these were first calving heifers. No new cases of mastitis this week.
11. Heifers were weighed prior to the start of breeding, the Friesian heifers averaged 321kg and the Jersey crossbreds averaged 299kg. Started breeding to AI on the 5th of May, all heifers were served once over 12 days.
12. The average body condition score of the herd is 2.95, with 6% of the animals with a score less than 2.75 and 2% with a score greater than 3.25.
13. Started breeding season on the 10th of May with the milking cows. Submission rate for the first 24 days of breeding was 93%. Bulls used were-
FR – MWW, WNE, WDS, MJD.
JE – SYI, HWY, WFM, RVW, PKU, TIO.
14. This is week10 of the breeding season, stock bulls were introduced 3 weeks ago. There are 3 bulls being used to cover the 120 cows. Two bulls are with the herd while one is rested, they are switched every 4 days.
15. Average milk yield is 19.19kg at 4.32% fat and 3.45% protein (1.49kg MS/cow), lactose 4.88%, SCC 147k, TBC 6k.
16. Average days in milk are 120 days with 217 kg of solids produced per cow.

C. Critical short term actions :

- Allocating grass in 36hr blocks.
- Feeding 0.5kg of concentrate.
- Monitor stock bull performance.

www.agresearch.teagasc.ie/moorepark/



Week:10/07/11	HG system	HS system
Stocking rate (cows/ha)	3.1	4.6
Milk yield (kg/cow/day)	19.19	20.11
% Fat	4.32	3.98
% Protein	3.45	3.57
% Lactose	4.88	4.89
Milk solids (kg/cow/day)	1.49	1.51
Supplement (kg/cow/day)		
Concentrate	0.5	0.5
Silage	0	0
Cumulative		
Milk yield (kg/cow)	2719	2657
% Fat	4.46	4.47
% Protein	3.53	3.50
% Lactose	4.88	4.87
Milk solids (kg/cow)	217	211
Bodyweight (kg)	491	491
Body Condition Score	2.94	2.92
Supplement (kg/cow)		
Concentrate	223	288
Silage to milking cows (kg DM/cow)	77	140
Maize (kg DM/cow)	0	0
Conserved silage (kg DM/cow)	580	132
Total silage fed (kg DM/cow)	1100	1400