

## Ballyhaise Weekly Farm Notes – Monday 19/07/2011

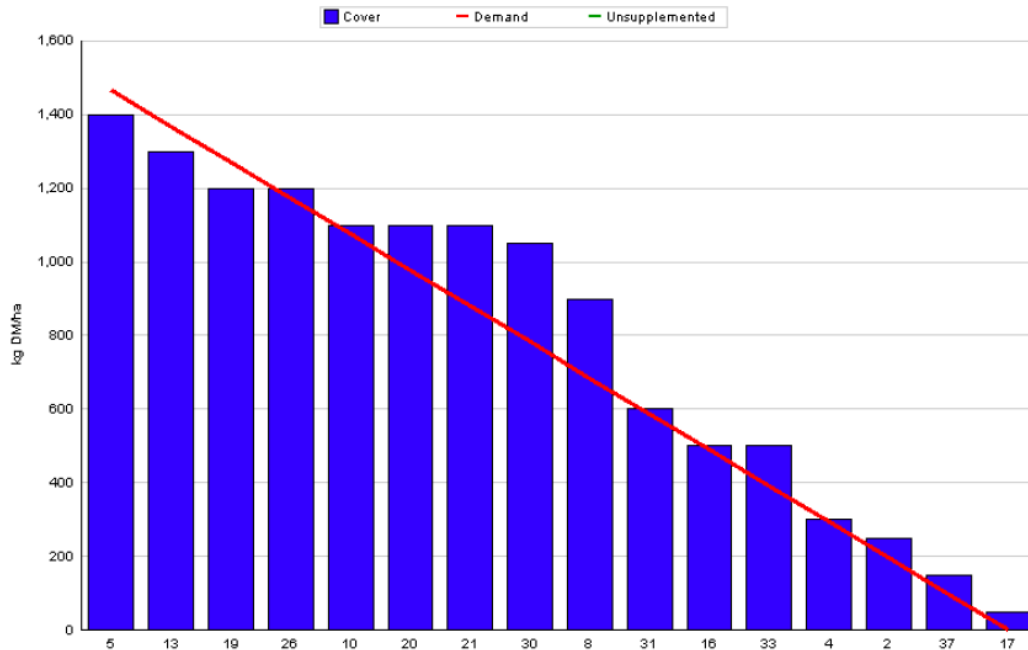
### A. Critical Issues

1. **Maintain residual at 3.5cm.**
2. **Monitor grass quality and remove surpluses.**
3. **Monitor stock bulls.**

### B. On farm situation

1. Average growth was 77kg DM/ha/day, (15% DM).
2. Demand is 70kgDM/ha/day (4.5 SR \* 15.5 kg DM /cow / day).
3. Average soil temperature for the past week was 16°C.
4. Total rainfall for the past week was 10 mm.
5. Farm feed wedge (19/7/11).

Moorepark Animal & Grassland Research and Innovation Centre		GrazePlan - Grass Measurement Report	
Group : TEAGASC RESEARCH FARMS		Date Produced 20-JUL-11	
Farm : Ballyhaise Farm		Ballyhaise BMW region systems comparison	
Date : 19-JUL-11		Treatment : 3.1 stocking rate	
Rotation Length : 21 Grass Allocation /cow (kg grass dry matter/LU) : 15.5 Concentrate Fed (kg/cow) : .5 Silage Fed (kg DM/cow) : 0 N Application Rate (units/acre) : N Application Rate (kg/ha) : Residual Height : 3.5 Total Livestock (LU) : 62	Farm Cover (kg DM/ha) : 756 Farm Cover (kg DM/LU) : 168 Stock Rate (LU/ha) : 4.50 Growth Rate : 77 Farm Demand (kg DM/ha/day) : 70 Target pregrazing yield (kg DM/ha) : 1466		



6. Growth rate this week was 77kg DM / ha which is slightly higher than last week at 72kg DM / ha. This is slightly above the demand which is 70kg DM / ha / day. Paddocks 22, 23 and 25 have covers of 2000kg DM and will be baled this week if weather conditions permit. Most of the paddocks in the top half of the wedge have been cut over the past few rotations and are excellent quality. A possible surplus is developing in the middle of the wedge and this will have

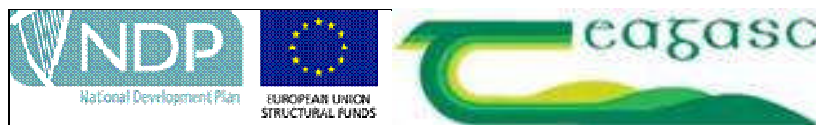
to be monitored closely to maintain pre-grazing yields at the target cover of 1400kg DM / ha.

7. There are 4 paddocks skipped for silage this week (22% of area). The grass quality has been poor on these paddocks over the last number of rotations. There is a further 8% of the area sprayed off for reseeding.
8. Average post grazing residual for the week was 4.1cm.
9. Paddock residency time ranges from 24 to 48 hours.
10. Feeding 0.5 kg of concentrate.
11. Following cows with 18 units of N (Can) after grazing.
12. There have been 16 clinical cases of mastitis since calving started, 6 of these were first calving heifers. No new cases of mastitis this week.
13. Started breeding season on the 10<sup>th</sup> of May with the milking cows. Submission rate for the first 24 days of breeding was 93%. Bulls used were-  
FR – MWW, WNE, WDS, MJD.  
JE – SYI, HWY, WFM, RVW, PKU, TIO.
14. This is week 11 of the breeding season, stock bulls were introduced 3 weeks ago. There are 3 bulls being used to cover the 120 cows. Two bulls are with the herd while one is rested, they are switched every 4 days.
15. Average milk yield is 19kg at 4.47% fat and 3.44% protein (1.50kg MS/cow), lactose 4.83%, SCC 147k, TBC 10k.

### C. Critical short term actions :

- Allocating grass in 36hr blocks.
- Feeding 0.5kg of concentrate.
- Monitor stock bull performance.

[www.agresearch.teagasc.ie/moorepark/](http://www.agresearch.teagasc.ie/moorepark/)



<b>Week:18/07/11</b>	<b>HG system</b>	<b>HS system</b>
<b>Stocking rate (cows/ha)</b>	<b>3.1</b>	<b>4.6</b>
Milk yield (kg/cow/day)	19.0	18.25
% Fat	4.47	4.41
% Protein	3.44	3.47
% Lactose	4.83	4.77
Milk solids (kg/cow/day)	1.50	1.43
Supplement (kg/cow/day)		
Concentrate	0.5	0.5
Silage	0	0
<b>Cumulative</b>		
Milk yield (kg/cow)	2838	2785
% Fat	4.44	4.47
% Protein	3.53	3.50
% Lactose	4.88	4.87
Milk solids (kg/cow)	226	221
Bodyweight (kg)	491	491
Body Condition Score	2.94	2.92
Supplement (kg/cow)		
Concentrate	226	292
Silage to milking cows (kg DM/cow)	77	140
Maize (kg DM/cow)	0	0
Conserved silage (kg DM/cow)	580	132
Total silage fed ( kg DM/cow)	1100	1400