

Ballyhaise Weekly Farm Notes – Monday 08/08/2011

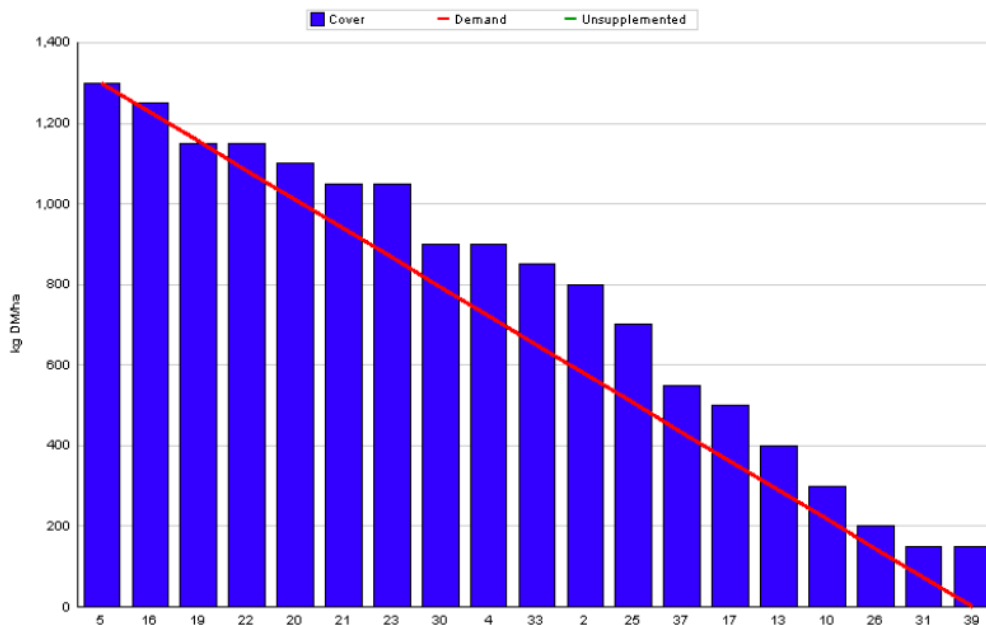
A. Critical Issues

1. **Maintain residual at 3.5cm.**
2. **Monitor grass quality and remove surpluses.**
3. **Start building autumn grass covers.**

B. On farm situation

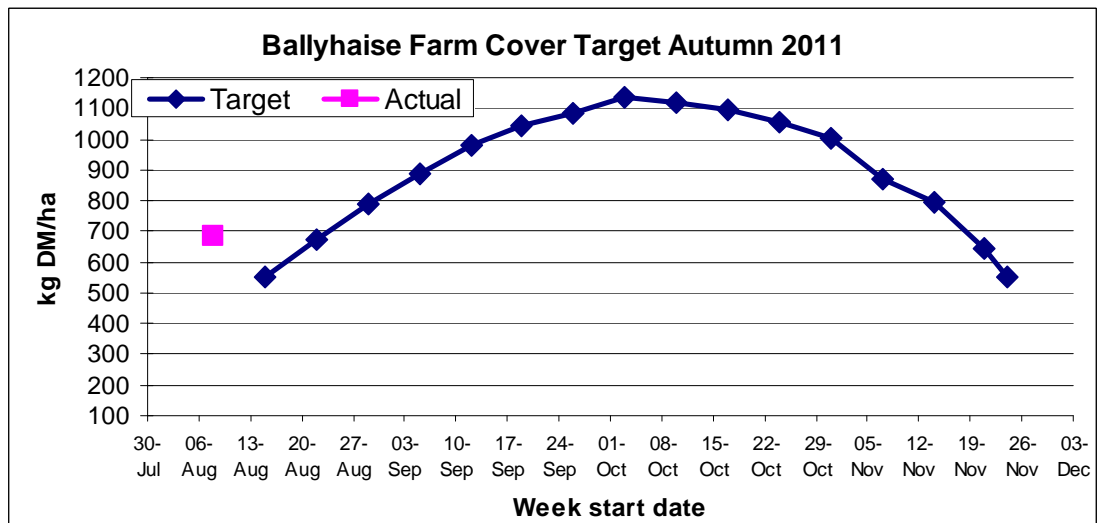
1. Average growth was 93kg DM/ha/day, (14% DM).
2. Demand is 56kgDM/ha/day (3.53 SR * 16 kg DM /cow / day).
3. Average soil temperature for the past week was 15.5°C.
4. Total rainfall for the past week was 26 mm.
5. Farm feed wedge (8/8/11).

Moorepark Animal & Grassland Research and Innovation Centre		GrazePlan - Grass Measurement Report	
Group : TEAGASC RESEARCH FARMS		Date Produced 09-AUG-11	
Farm : Ballyhaise Farm		Ballyhaise BMW region systems comparison	
Date : 08-AUG-11		Treatment : 3.1 stocking rate	
Rotation Length :	23	Farm Cover (kg DM/ha) :	686
Grass Allocation /cow (kg grass dry matter/LU	16	Farm Cover (kg DM/LU) :	194
Concentrate Fed (kg/cow) :	0		
Silage Fed (kg DM/cow) :	0		
N Application Rate (units/acre) :		Stock Rate (LU/ha) :	3.53
N Application Rate (kg/ha) :		Growth Rate :	93
Residual Height :	3.5	Farm Demand (kg DM/ha/day) :	56
Total Livestock (LU) :	62	Target pregrazing yield (kg DM/ha) :	1299



6. Growth rate this week was 93kg DM / ha which is an increase from last week. As can be seen above there is a surplus emerging in the middle of the wedge. This is a result of the large difference between demand and growth rate over the last seven days. No action has been taken to reduce the farm cover as the pre-grazing yield is still within an acceptable range. Action will be taken next week to reduce the cover to 550kg DM / ha which is the target cover in the autumn budget below.

7. This is the target average farm cover for each week over the autumn period. The target is to reach a peak average farm cover of 1100kg DM / ha in the first week of October. This will mean grazing pre-grazing covers of 2200kg DM / ha. The target closing cover is 550kg DM / ha, the first paddock closed on the 5th of October should have a cover of 1100kg DM / ha which will be carried over the winter for grazing next spring.



8. Paddock 8 was baled for silage this week with an average cover of 2200 kg DM / ha. Any surplus grass that arises over the next few weeks will be baled off at lower cover. This will allow greater flexibility and will maintain a low demand for building covers for autumn. This process will begin on the 15th of August.
9. Current rotation length is 23 days, this will increase 30 days by the 1st of September and 45 days by the 15th of October.
10. Paddocks 36 and 9 were reseeded with Tyrella on the 30th of July. The seedbed was prepared with two runs of a power harrow, the second run at right angles to the first and the seed was then broadcast and rolled. Three bags of 10-10-20 per acre and two tons of lime were applied.
11. Average post grazing residual for the week was 3.8cm.
12. Paddock residency time ranges from 24 to 48 hours.
13. Following cows with 27 units of N (Can) after grazing.
14. There have been 16 clinical cases of mastitis since calving started, 6 of these were first calving heifers. No new cases of mastitis this week.
15. Started breeding season on the 10th of May with the milking cows. Submission rate for the first 24 days of breeding was 93%. Bulls used were-
FR – MWW, WNE, WDS, MJD.
JE – SYI, HWY, WFM, RVW, PKU, TIO.
16. The stock bulls were removed on the 7th of August (13 week breeding period).
17. The whole herd was scanned on the 29th of July. The six week in-calf rate is 58% and the 8 week in-calf rate is 72%. The maiden heifers have not been scanned yet.

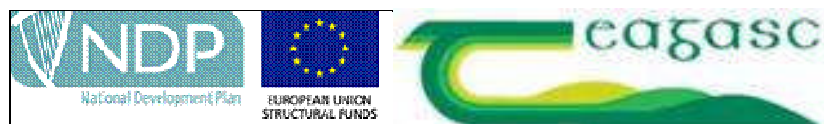
18. The average condition score of the herd has dropped from 2.95 last month to 2.85 this month. The % of the herd with a condition score of less than 2.75 has increased to 13% (8 out of 62). This will be monitored closely over the next few weeks.

19. Average milk yield is 17.43kg at 4.48% fat and 3.47% protein (1.38kg MS/cow), lactose 4.74%, SCC 134k, TBC 8k.

C. Critical short term actions :

- Allocating grass in 36hr blocks.
- Applying 27units of N / acre.
- Monitor condition score.

www.agresearch.teagasc.ie/moorepark/



Week:7/08/11	HG system	HS system
Stocking rate (cows/ha)	3.1	4.6
Milk yield (kg/cow/day)	17.43	16.76
% Fat	4.48	4.52
% Protein	3.47	3.63
% Lactose	4.74	4.80
Milk solids (kg/cow/day)	1.38	1.43
Supplement (kg/cow/day)		
Concentrate	0.25	0.25
Silage	0	0
Cumulative		
Milk yield (kg/cow)	3235	2916
% Fat	4.44	4.48
% Protein	3.53	3.50
% Lactose	4.87	4.86
Milk solids kg / cow (kg / ha)	257 (806)	232 (1064)
Bodyweight (kg)	478	491
Body Condition Score	2.85	2.92
Supplement (kg/cow)		
Concentrate	236	308
Silage to milking cows (kg DM/cow)	77	140
Maize (kg DM/cow)	0	0

Conserved silage (kg DM/cow)	763		189	
Total silage fed (kg DM/cow)	1100		1400	