

Ballyhaise Weekly Farm Notes – Monday 21/08/2011

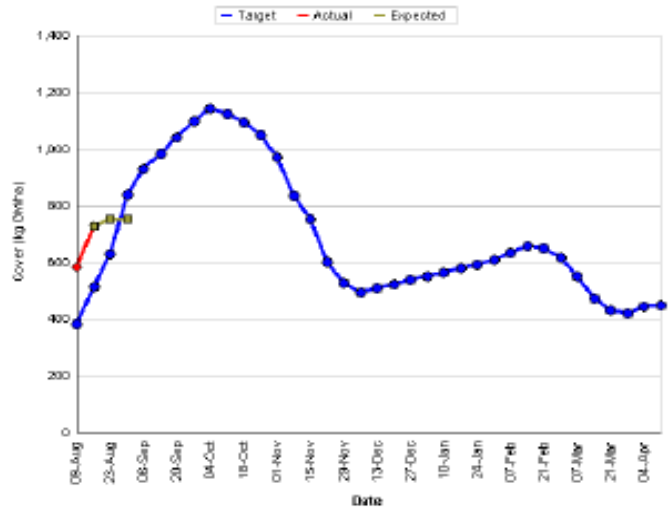
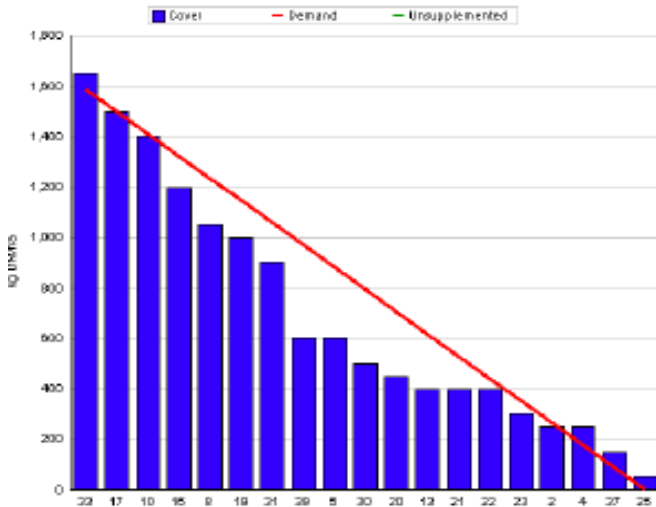
A. Critical Issues

1. Maintain residual at 3.5cm.
2. Continue building autumn grass covers.
3. 12 hr allocation of grass.

B. On farm situation

1. Average growth was 62kg DM/ha/day, (15% DM).
2. Demand is 57kgDM/ha/day (3.54 SR * 16 kg DM /cow / day).
3. Average soil temperature for the past week was 14.5°C.
4. Total rainfall for the past week was 11.8 mm.
5. Farm feed wedge (21/8/11).

Moorepark Animal & Grassland Research and Innovation Centre		GrazePlan - Grass Measurement Report	
Group : TEAGASC RESEARCH FARMS		Date Produced : 24-AUG-11	
Farm : Ballyhaise Farm	Ballyhaise BMW region systems comparison		
Date : 22-AUG-11	Treatment : 3.1 stocking rate		
Rotation Length :	28	Farm Cover (kg DM/ha) :	730
Grass Allocation /cow (kg grass dry matter/LU)	16	Farm Cover (kg DM/LU) :	206
Concentrate Fed (kg/cow) :	0	Current Monthly Fertilizer Rate (kg/ha) :	
Silage Fed (kg DM/cow) :	0	Stock Rate (LU/ha) :	3.54
N Application Rate (units/acre) :		Growth Rate :	62
N Application Rate (kg/ha) :		Farm Demand (kg DM/LU/day) :	57
Residual Height :	3.5	Target pregrazing yield (kg DM/ha) :	1587
Total Livestock :	62	Forecast Growth Week 1 and 2:	60 60



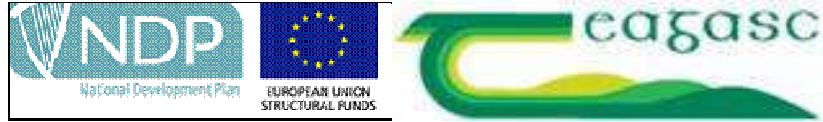
6. Growth rate this week was 62kg DM / ha which is just enough to meet demand of 57kg DM / ha. The blue line on the graph is the target farm cover, the red line represents the actual cover and the yellow dots are the predicted cover for the next two weeks at a predicted growth rate of 60 kg DM / ha / day. Although we are ahead of the target farm cover we have not removed any paddocks yet because our growth rates have been lower than budgeted growth rates for the past 2 weeks.

7. The target is to reach a peak average farm cover of 1100kg DM / ha in the first week of October. This will mean grazing pre-grazing covers of 2200kg DM / ha. The target closing cover is 550kg DM / ha, the first paddock closed on the 5th of October should have a cover of 1100kg DM / ha which will be carried over the winter for grazing next spring.
8. Current rotation length is 28 days, this will increase 30 days by the 1st of September and 45 days by the 15th of October. This means that the cows are grazing $1/28^{\text{th}}$ of the available area per day $9 (0.62\text{ha} * 1650 \text{ kg DM / ha} = 1023 \text{ kg DM / day for } 62 \text{ cows} = 16.5 \text{ kg DM / cow / day}.$
9. Paddocks 36 and 9 were reseeded with Tyrella on the 30th of July. The seedbed was prepared with two runs of a power harrow, the second run at right angles to the first and the seed was then broadcast and rolled. Three bags of 10-10-20 per acre and two tons of lime were applied. These paddocks were top dressed with 27 units of N last week and post-emergence spray was done on the 17th of August. They will be grazed with calves this week and put back in the rotation from then on.
10. Grass is allocated in 12 hr blocks in order to achieve the desired residual while grazing covers in excess of 1600 kg DM / ha.
11. Average post grazing residual for the week was 3.8cm.
12. Following cows with 27 units of N (Can) after grazing.
13. Heifer calves were weighed last week and averaged 143kg. These are all jersey cross heifer calves. They are 12kg behind target weight due to problems with worm infestations earlier in the grazing season.
14. There have been 17 clinical cases of mastitis since calving started, 6 of these were first calving heifers. There were no new cases of mastitis this week.
15. Started breeding season on the 10th of May with the milking cows. Submission rate for the first 24 days of breeding was 93%. Bulls used were-
FR – MWW, WNE, WDS, MJD.
JE – SYI, HWY, WFM, RVW, PKU, TIO.
16. The stock bulls were removed on the 7th of August (13 week breeding period).
17. The whole herd was scanned on the 29th of July. The six week in-calf rate is 58% and the 8 week in-calf rate is 72%. The maiden heifers have not been scanned yet.
18. The average condition score of the herd has dropped from 2.95 last month to 2.85 this month. The % of the herd with a condition score of less than 2.75 has increased to 13% (8 out of 62). This will be monitored closely over the next few weeks.
19. Average milk yield is 17.1 kg at 4.66% fat and 3.68% protein (1.42kg MS/cow), lactose 4.74%, SCC 165k, TBC 9k.

C. Critical short term actions :

- Allocating grass in 12hr blocks.
- Applying 27units of N / acre.
- Monitor condition score.

www.agresearch.teagasc.ie/moorepark/



Week:20/08/11	HG system	HS system
Stocking rate (cows/ha)	3.1	4.6
Milk yield (kg/cow/day)	17.1	16.18
% Fat	4.66	4.61
% Protein	3.68	3.48
% Lactose	4.74	4.68
Milk solids (kg/cow/day)	1.42	1.29
Supplement (kg/cow/day)		
Concentrate	0.25	0.25
Silage	0	0
Cumulative		
Milk yield (kg/cow)	3488	3404
% Fat	4.45	4.49
% Protein	3.54	3.50
% Lactose	4.86	4.84
Milk solids kg / cow (kg / ha)	278 (872)	271 (1246)
Bodyweight (kg)	478	491
Body Condition Score	2.85	2.92
Supplement (kg/cow)		
Concentrate	244	343
Silage to milking cows (kg DM/cow)	77	140
Maize (kg DM/cow)	0	0
Conserved silage (kg DM/cow)	763	189
Total silage fed (kg DM/cow)	1100	1400