

Ballyhaise Weekly Farm Notes – Monday 05/09/2011

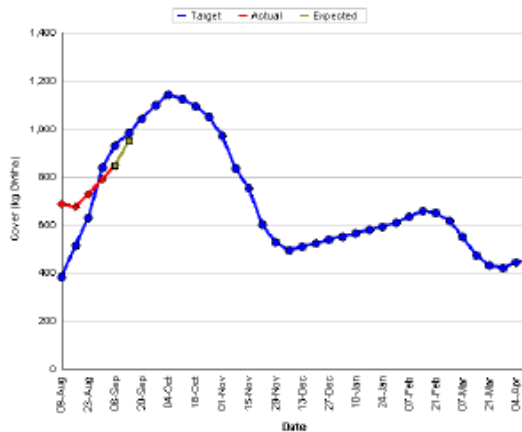
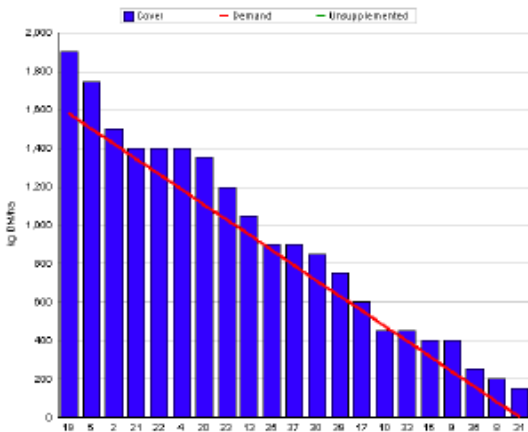
A. Critical Issues

1. Maintain residual at 3.5cm.
2. Continue building autumn grass covers.
3. 12 hr allocation of grass.

B. On farm situation

1. Average growth was 66kg DM/ha/day, (14% DM).
2. Demand is 45kgDM/ha/day (3.23 SR * 14 kg DM /cow / day).
3. Average soil temperature for the past week was 13.5°C.
4. Total rainfall for the past week was 18.6 mm.
5. Farm feed wedge (05/09/11).

Moorepark Animal & Grassland Research and Innovation Centre		GrazePlan - Grass Measurement Report	
Group : TEAGASC RESEARCH FARMS		Date Produced : 07-SEP-11	
Farm : Ballyhaise Farm		Ballyhaise BMW region systems comparison	
Date : 05-SEP-11		Treatment : 3.1 stocking rate	
Rotation Length :	35	Farm Cover (kg DM/ha) :	848
Grass Allocation /cow (kg grass dry matter/LL)	14	Farm Cover (kg DM/LL) :	263
Concentrate Fed (kg/cow) :	2	Current Monthly Fertilizer Rate (kg/ha) :	
Silage Fed (kg DM/cow) :	0	Stock Rate (LU/ha) :	3.23
N Application Rate (units/acre) :		Growth Rate :	66
N Application Rate (kg/ha) :		Farm Demand (kg DM/LL/day) :	45
Residual Height :	4	Target pregrazing yield (kg DM/ha) :	1581
Total Livestock :	62	Forecast Growth Week 1 and 2 :	60



6. Growth rate this week was 65kg DM / ha which is above demand of 57kg DM / ha. The blue line on the graph is the target farm cover, the red line represents the actual cover and the yellow dots are the predicted cover for the next two weeks at a predicted growth rate of 60 kg DM / ha / day. The farm cover is below the target line so 2 kg of concentrate has been introduced.
7. The target is to reach a peak average farm cover of 1100kg DM / ha in the first week of October. This will mean grazing pre-grazing covers of 2200kg DM / ha. The target closing cover is 550kg DM / ha, the first paddock closed on the 5th of October should have a cover of 1100kg DM / ha which will be carried over the winter for grazing next spring.
8. Current rotation length is 35 days; this will increase to 45 days by the 15th of October. This means that the cows are grazing 1/35th of the available area per

day (0.54ha * 1700 kg DM / ha = 917 kg DM / day for 62 cows = 14.8 kg DM / cow / day.

9. Total grass grown to date is 11.6 tons DM / ha.
10. Paddocks 36 and 9 were reseeded with Tyrella on the 30th of July. They were grazed with the calves at the weekend at a cover of 400 kg DM / ha. They are now back in the rotation.
11. Grass is allocated in 12 hr blocks in order to achieve the desired residual while grazing covers in excess of 1600 kg DM / ha.
12. Average post grazing residual for the week was 4.1cm.
13. The farm will receive a bulk spread of 27 units of CAN this week before the closing date..
14. Heifer calves were weighed on the 15th of August and averaged 143kg. These are all jersey cross heifer calves. They are 12kg behind target weight due to problems with worm infestations earlier in the grazing season.
15. There have been 17 clinical cases of mastitis since calving started, 6 of these were first calving heifers. There were no new cases of mastitis this week.
16. There has been one cow with a displaced stomach this week which had to be operated on. This cow is in the 4.6 cows / ha group and this may have been caused by concentrate being introduced to suddenly.
17. Started breeding season on the 10th of May with the milking cows. Submission rate for the first 24 days of breeding was 93%. Bulls used were-
FR – MWW, WNE, WDS, MJD.
JE – SYI, HWY, WFM, RVW, PKU, TIO.
18. The stock bulls were removed on the 7th of August (13 week breeding period).
19. The whole herd was scanned on the 29th of July. The six week in-calf rate is 58% and the 8 week in-calf rate is 72%.
20. Average milk yield is 17.51 kg at 4.47% fat and 3.84% protein (1.44kg MS/cow), lactose 4.69%, SCC 220k, TBC 9k.

C. Critical short term actions :

- Allocating grass in 12hr blocks.
- Grazing 1/35th of area per day.
- Applying 27units of N / acre.
- Monitor condition score.

www.agresearch.teagasc.ie/moorepark/

Week:03/09/11	HG system	HS system
Stocking rate (cows/ha)	3.1	4.6
Milk yield (kg/cow/day)	17.51	18.25
% Fat	4.47	4.40
% Protein	3.84	3.70
% Lactose	4.69	4.73
Milk solids (kg/cow/day)	1.44	1.46
Supplement (kg/cow/day)		
Concentrate	0.25	4
Silage	0	0
Cumulative		
Milk yield (kg/cow)	3730	3656
% Fat	4.45	4.49
% Protein	3.56	3.51
% Lactose	4.85	4.83
Milk solids kg / cow (kg / ha)	298 (935)	291 (1339)
Bodyweight (kg)	478	491
Body Condition Score	2.85	2.92
Supplement (kg/cow)		
Concentrate	255	399
Silage to milking cows (kg DM/cow)	77	140
Maize (kg DM/cow)	0	0
Conserved silage (kg DM/cow)	784	189
Total silage fed (kg DM/cow)	1100	1400