

Ballyhaise Weekly Farm Notes – Monday 12/09/2011

A. Critical Issues

1. Maintain residual at 3.5cm.
2. Continue building autumn grass covers.
3. 12 hr allocation of grass.

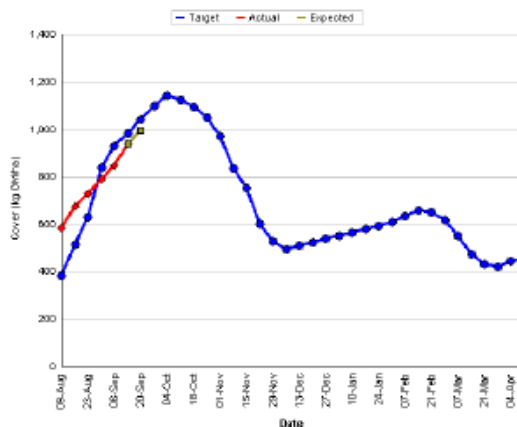
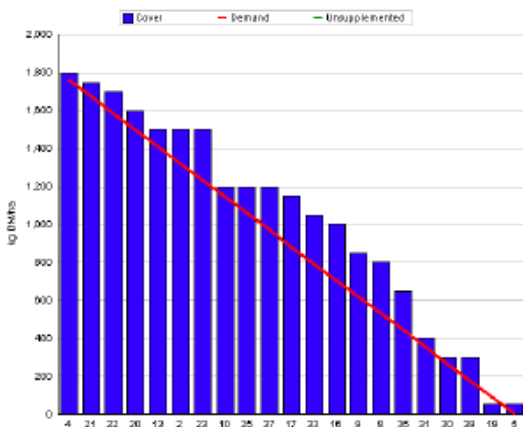
B. On farm situation

1. Average growth was 62kg DM/ha/day, (14% DM).
2. Demand is 42kgDM/ha/day (3.23 SR * 13 kg DM /cow / day).
3. Feeding 3kg concentrate to hold rotation length.
4. Average soil temperature for the past week was 14°C.
5. Total rainfall for the past week was 40 mm.
6. Farm feed wedge (12/09/11).

Moorepark Animal & Grassland Research and Innovation Centre		GrazePlan - Grass Measurement Report	
Group	TEAGASC RESEARCH FARMS	Date Produced	13-SEP-11
Farm	Ballyhaise Farm	Ballyhaise BMW region systems comparison	
Date	12-SEP-11	Treatment	3.1 stocking rate

Rotation Length :	42
Grass Allocation /cow (kg grass dry matter/LU)	13
Concentrate Fed (kg/cow) :	3
Silage Fed (kg DM/cow) :	0
N Application Rate (units/haore) :	
N Application Rate (kg/ha) :	
Residual Height :	4
Total Livestock :	62

Farm Cover (kg DM/ha) :	940
Farm Cover (kg DM/LU) :	291
Current Monthly Fertilizer Rate (kg/ha) :	
Stock Rate (LU/ha) :	3.23
Growth Rate :	62
Farm Demand (kg DM/LU/day) :	42
Target pregrazing yield (kg DM/ha) :	1762
Forecast Growth Week 1 and 2 :	50



7. Growth rate this week was 62kg DM / ha which is above demand of 42kg DM / ha. The blue line on the graph is the target farm cover, the red line represents the actual cover and the yellow dots are the predicted cover for the next two weeks at a predicted growth rate of 50 kg DM / ha / day. The farm cover is below the target line so 3 kg of concentrate has been introduced.
8. The target is to reach a peak average farm cover of 1100kg DM / ha in the first week of October. This will mean grazing pre-grazing covers of 2200kg DM / ha. The target closing cover is 550kg DM / ha, the first paddock closed on the 5th of October should have a cover of 1100kg DM / ha which will be carried over the winter for grazing next spring.
9. Current rotation length is 42 days; this will increase to 50 days by the 15th of October. This means that the cows are grazing 1/42nd of the available area per

day (0.46ha * 1800 kg DM / ha = 822 kg DM / day for 62 cows = 13 kg DM / cow / day.

10. Ground conditions have deteriorated this week so grass is being allocated in 12 hr blocks to minimise poaching damage. Paddocks 37 and 39 are earmarked for grazing as soon as grazing conditions improve, these are wet paddocks and are prone to flooding so grass is not built up on this area.
11. Total grass grown to date is 11.6 tons DM / ha.
12. Paddocks 36 and 9 were reseeded with Tyrella on the 30th of July. They were grazed with the calves at the weekend at a cover of 400 kg DM / ha. They are now back in the rotation.
13. Average post grazing residual for the week was 3.8cm.
14. The farm will receive a bulk spread of 27 units of CAN this week before the closing date.
15. Heifer calves were weighed on the 15th of August and averaged 143kg. These are all jersey cross heifer calves. They are 12kg behind target weight due to problems with worm infestations earlier in the grazing season.
16. There have been 17 clinical cases of mastitis since calving started, 6 of these were first calving heifers. There were no new cases of mastitis this week.
17. Started breeding season on the 10th of May with the milking cows. Submission rate for the first 24 days of breeding was 93%. Bulls used were-
FR – MWW, WNE, WDS, MJD.
JE – SYI, HWY, WFM, RVW, PKU, TIO.
18. The stock bulls were removed on the 7th of August (13 week breeding period).
19. The whole herd was scanned on the 29th of July. The six week in-calf rate is 58% and the 8 week in-calf rate is 72%.
20. Average milk yield is 16.76 kg at 5.12% fat and 3.93% protein (1.51kg MS/cow), lactose 4.70%, SCC 222k, TBC 4k.

C. Critical short term actions :

- Allocating grass in 12hr blocks.
- Feeding 3kg concentrate.
- Grazing 1/42nd of area per day.
- Applying 27units of N / acre.
- Monitor condition score.

www.agresearch.teagasc.ie/moorepark/

Week:11/09/11	HG system	HS system
Stocking rate (cows/ha)	3.1	4.6
Milk yield (kg/cow/day)	16.76	16.17
% Fat	5.12	4.87
% Protein	3.93	3.90
% Lactose	4.70	4.72
Milk solids (kg/cow/day)	1.51	1.41
Supplement (kg/cow/day)		
Concentrate	2	4
Silage	0	4
Cumulative		
Milk yield (kg/cow)	3847	3769
% Fat	4.47	4.50
% Protein	3.57	3.52
% Lactose	4.85	4.83
Milk solids kg / cow (kg / ha)	309 (970)	301 (1384)
Bodyweight (kg)	478	491
Body Condition Score	2.85	2.92
Supplement (kg/cow)		
Concentrate	285	460
Silage to milking cows (kg DM/cow)	77	168
Maize (kg DM/cow)	0	0
Conserved silage (kg DM/cow)	784	189
Total silage fed (kg DM/cow)	1100	1400