

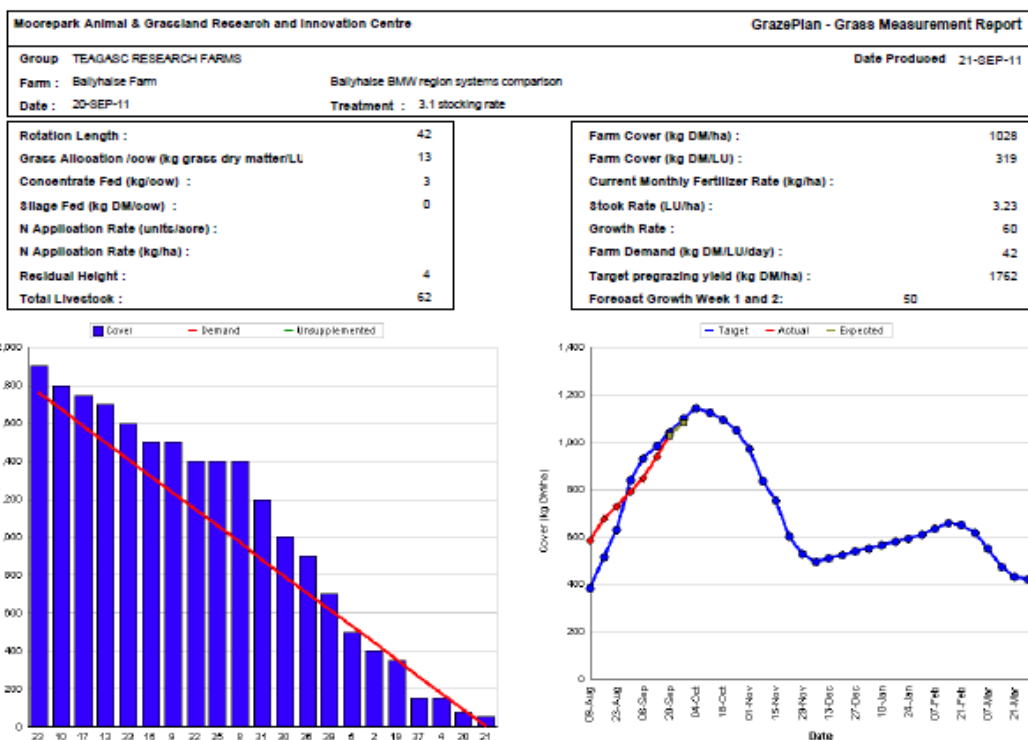
Ballyhaise Weekly Farm Notes – Monday 19/09/2011

A. Critical Issues

1. **Maintain residual at 3.5cm.**
2. **Continue building autumn grass covers.**
3. **12 hr allocation of grass.**

B. On farm situation

1. Average growth was 60kg DM/ha/day, (15% DM).
2. Demand is 42kgDM/ha/day (3.23 SR * 13 kg DM /cow / day).
3. Feeding 3kg concentrate to hold rotation length.
4. Average soil temperature for the past week was 13°C.
5. Total rainfall for the past week was 24 mm.
6. Farm feed wedge (19/09/11).



7. Growth rate this week was 60kg DM / ha which is above demand of 42kg DM / ha. The blue line on the graph is the target farm cover, the red line represents the actual cover and the yellow dots are the predicted cover for the next two weeks at a predicted growth rate of 50 kg DM / ha / day. AFC is 1028 kg DM / ha which is slightly behind the target of 1048 kg DM / ha.
8. The target is to reach a peak average farm cover of 1100kg DM / ha in the first week of October. This will mean grazing pre-grazing covers of 2200kg DM / ha. The target closing cover is 550kg DM / ha, the first paddock closed on the 5th of October should have a cover of 1100kg DM / ha which will be carried over the winter for grazing next spring.
9. Current rotation length is 42 days; this will increase to 50 days by the 15th of October. This means that the cows are grazing 1/42nd of the available area per

day (0.46ha * 1800 kg DM / ha = 822 kg DM / day for 62 cows = 13 kg DM / cow / day.

10. Ground conditions have deteriorated this week so grass is being allocated in 12 hr blocks to minimise poaching damage. We skipped out of rotation to graze some of the wetter lower paddocks last week so most of the paddocks to be grazed this week are reasonably dry. On-off grazing has not been used yet but may have to be implemented this week if conditions remain wet.
11. Total grass grown to date is 12.9 tons DM / ha.
12. Average post grazing residual for the week was 4.1cm.
13. There have been 17 clinical cases of mastitis since calving started, 6 of these were first calving heifers. There were no new cases of mastitis this week.
14. Started breeding season on the 10th of May with the milking cows. Submission rate for the first 24 days of breeding was 93%. Bulls used were-
FR – MWW, WNE, WDS, MJD.
JE – SYI, HWY, WFM, RVW, PKU, TIO.
15. The stock bulls were removed on the 7th of August (13 week breeding period).
16. The whole herd was scanned last week. The empty rate was 20% after 13 weeks of breeding, which is too high, 72% are in calf to AI in 8 weeks and the rest are in calf to stock bulls. The maiden heifers were also scanned, there were 2 empty out of 30 and 24 were in calf to AI in the first 3 weeks.
17. Average milk yield is 16.5 kg at 4.96% fat and 3.99% protein (1.47kg MS/cow), lactose 4.71%, SCC 186k, TBC 11k.

C. Critical short term actions :

- Allocating grass in 12hr blocks.
- Feeding 3kg concentrate.
- Grazing 1/42nd of area per day.
- Monitor condition score.

www.agresearch.teagasc.ie/moorepark/



Week:18/09/11	HG system	HS system
Stocking rate (cows/ha)	3.1	4.6
Milk yield (kg/cow/day)	16.5	18.97
% Fat	4.96	5.18
% Protein	3.99	3.88
% Lactose	4.71	4.72
Milk solids (kg/cow/day)	1.47	1.45
Supplement (kg/cow/day)		
Concentrate	3	3
Silage	0	6
Cumulative		
Milk yield (kg/cow)	3971	3881
% Fat	4.49	4.52
% Protein	3.58	3.53
% Lactose	4.84	4.83
Milk solids kg / cow (kg / ha)	320 (1005)	311 (1430)
Bodyweight (kg)	488	489
Body Condition Score	2.92	2.94
Supplement (kg/cow)		
Concentrate	308	481
Silage to milking cows (kg DM/cow)	77	210
Maize (kg DM/cow)	0	0
Conserved silage (kg DM/cow)	784	189
Total silage fed (kg DM/cow)	1100	1400