

Ballyhaise Weekly Farm Notes – Monday 17/10/2011

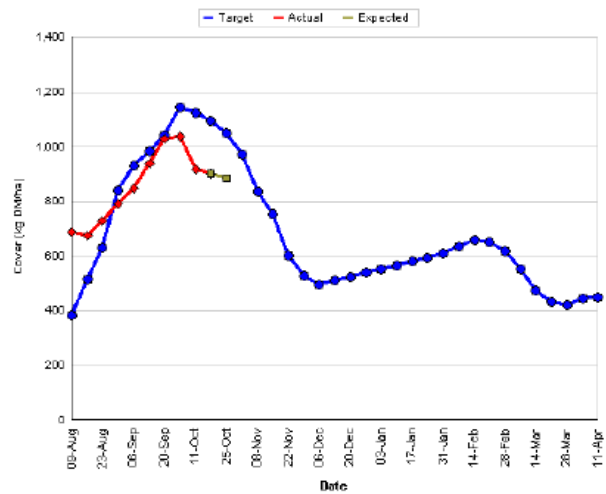
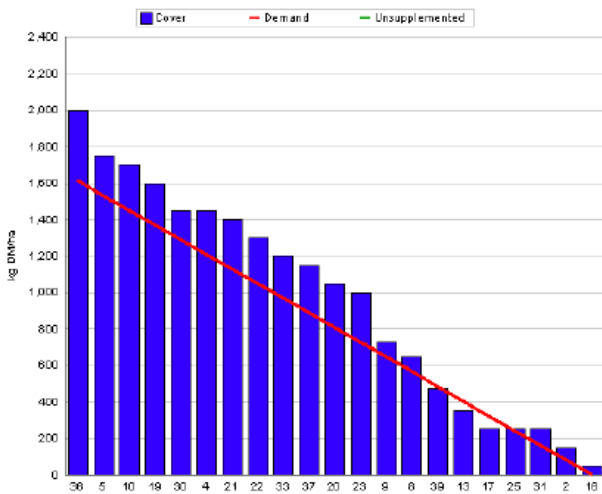
A. Critical Issues

1. **Maintain residual at 3.5cm.**
2. **Minimise pasture damage when grazing.**
3. **Maintain condition score.**
4. **Control lameness.**

B. On farm situation

1. Average growth was 40kg DM/ha/day, (11% DM).
2. Demand is 32kgDM/ha/day (3.23 SR * 10 kg DM /cow / day).
3. Feeding 3kg concentrate and 2kg of bale silage to hold rotation length.
4. Average soil temperature for the past week was 14°C.
5. Total rainfall for the past week was 29 mm.
6. Farm feed wedge (17/10/11).

Moorepark Animal & Grassland Research and Innovation Centre		GrazePlan - Grass Measurement Report	
Group : TEAGASC RESEARCH FARMS		Date Produced : 18-OCT-11	
Farm : Ballyhaise Farm		Ballyhaise BMW region systems comparison	
Date : 17-OCT-11		Treatment : 3.1 stocking rate	
Rotation Length :	50	Farm Cover (kg DM/ha) :	900
Grass Allocation /cow (kg grass dry matter/LL	10	Farm Cover (kg DM/LU) :	279
Concentrate Fed (kg/cow) :	3	Current Monthly Fertilizer Rate (kg/ha) :	
Silage Fed (kg DM/cow) :	2	Stock Rate (LU/ha) :	3.23
N Application Rate (units/acre) :		Growth Rate :	40
N Application Rate (kg/ha) :		Farm Demand (kg DM/LU/day) :	32
Residual Height :	4	Target pregrazing yield (kg DM/ha) :	1614
Total Livestock :	62	Forecast Growth Week 1 and 2:	30



7. Growth rate this week was 40kg DM / ha which is above demand of 32kg DM / ha. The blue line on the graph is the target farm cover, the red line represents the actual cover and the yellow dots are the predicted cover for the next two weeks at a predicted growth rate of 30 kg DM / ha / day. AFC is 900 kg DM / ha which is behind the target of 1050 kg DM / ha. Feeding 3kg of concentrate and 2kg of silage to prevent the farm cover from dropping too fast. The cull cows will be sold over the few weeks to help drop demand further.

8. The first paddocks were closed for next spring on the 6th of October. To date 27% of the area is closed. On target to have 60% of the area closed by the 1st of November. These will be the first paddocks to be grazed next spring

9. Current rotation length is 50 days this means that the cows are grazing 1/50th of the available area per day (0.38ha).
10. Ground conditions improved slightly towards the end of last week but very heavy rain over the weekend has led to very wet conditions. We have started on-off grazing again to help protect paddocks from excessive damage. The cows are being stood off on the pad. Since the grazing conditions have been so poor we have been allocating 2 kg less grass for the evening grazing and 2 kg DM of bale silage is fed out along the barrier when they come in at 7 o'clock.
11. Total grass grown to date is 14.1 tons DM / ha.
12. Average post grazing residual for the week was 3.6cm.
13. We've had some trouble with lame cows over the past few weeks as farm roadways have got rough with heavy rain. Cows will be foot bathed twice a week for the next few weeks to help harden their hooves for winter. Also cows are let walk to and from the parlour at their own pace as much as is possible.
14. There have been 17 clinical cases of mastitis since calving started, 6 of these were first calving heifers. There were no new cases of mastitis this week.
15. Started breeding season on the 10th of May with the milking cows. Submission rate for the first 24 days of breeding was 93%. Bulls used were-
FR – MWW, WNE, WDS, MJD.
JE – SYI, HWY, WFM, RVW, PKU, TIO.
16. The stock bulls were removed on the 7th of August (13 week breeding period).
17. The whole herd was scanned in September. The empty rate was 20% after 13 weeks of breeding, which is too high, 72% are in calf to AI in 8 weeks and the rest are in calf to stock bulls. The maiden heifers were also scanned, there were 2 empty out of 30 and 24 were in calf to AI in the first 3 weeks.
18. Average milk yield is 13.4 kg at 5.55% fat and 4.11% protein (1.29kg MS/cow), lactose 4.84%, SCC 212k, TBC 9k.

C. Critical short term actions :

- Allocating grass in 12hr blocks.
- On/off grazing.
- Feeding 3kg concentrate and 2kg of bale silage.
- Grazing 1/50th of area per day.
- Monitor condition score.

www.agresearch.teagasc.ie/moorepark/



Week:16/10/11	HG system	HS system
Stocking rate (cows/ha)	3.1	4.6
Milk yield (kg/cow/day)	13.4	13.2
% Fat	5.55	5.91
% Protein	4.11	4.13
% Lactose	4.84	4.85
Milk solids (kg/cow/day)	1.29	1.32
Supplement (kg/cow/day)		
Concentrate	3	3
Silage	2	7
Cumulative		
Milk yield (kg/cow)	4422	4309
% Fat	4.57	4.63
% Protein	3.62	3.58
% Lactose	4.83	4.82
Milk solids kg / cow (kg / ha)	361 (1133)	352 (1619)
Bodyweight (kg)	488	489
Body Condition Score	2.92	2.94
Supplement (kg/cow)		
Concentrate	414	578
Silage to milking cows (kg DM/cow)	91	301
Maize (kg DM/cow)	0	0
Conserved silage (kg DM/cow)	784	189
Total silage fed (kg DM/cow)	1100	1400