

## Ballyhaise Weekly Farm Notes – Monday 02/11/2011

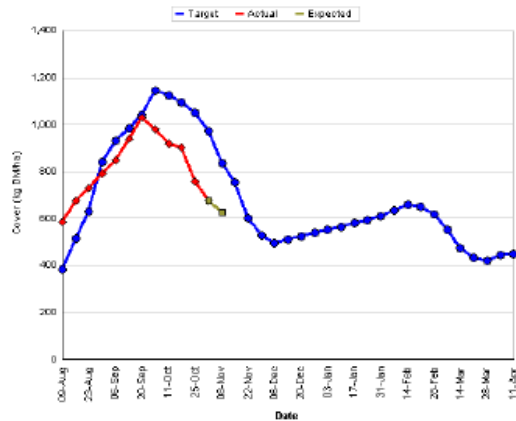
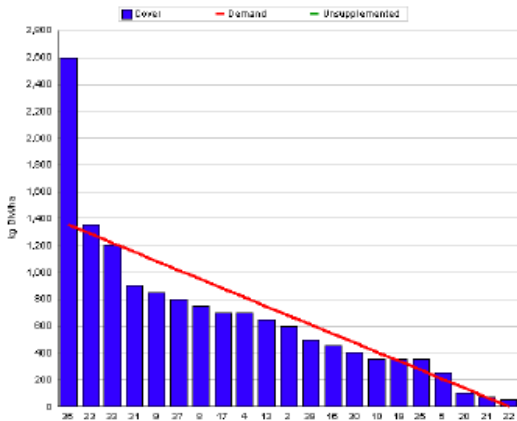
### A. Critical Issues

1. **Maintain residual at 3.5cm.**
2. **Minimise pasture damage when grazing.**
3. **Maintain condition score.**
4. **Control lameness.**

### B. On farm situation

1. Average growth was 28kg DM/ha/day, (13% DM).
2. Demand is 27kgDM/ha/day (2.71 SR \* 10 kg DM /cow / day).
3. Feeding 3kg concentrate and 2kg of bale silage to hold rotation length.
4. Rainfall for the last 7 days was 36mm.
5. Soil temperature is 10.5°C.
6. Farm feed wedge (1/11/11).

Moorepark Animal & Grassland Research and Innovation Centre		GrazePlan - Grass Measurement Report	
Group : TEAGASC RESEARCH FARMS		Date Produced : 02-NOV-11	
Farm : Ballyhaise Farm		Ballyhaise BMW region systems comparison	
Date : 01-NOV-11		Treatment : 3.1 stocking rate	
Rotation Length : 50 Grass Allocation /cow (kg grass dry matter/LL) : 10 Concentrate Fed (kg/cow) : 3 Silage Fed (kg DM/cow) : 2 N Application Rate (units/acre) : N Application Rate (kg/ha) : Residual Height : 4 Total Livestock : 52		Farm Cover (kg DM/ha) : 675 Farm Cover (kg DM/LU) : 250 Current Monthly Fertilizer Rate (kg/ha) : Stock Rate (LU/ha) : 2.71 Growth Rate : 28 Farm Demand (kg DM/LU/day) : 27 Target pregrazing yield (kg DM/ha) : 1353 Forecast Growth Week 1 and 2 : 20	



7. Growth rate this week was 28kg DM / ha which is the same as demand of 27kg DM / ha. Cull cows have been sold this week which has dropped demand.
8. The first paddocks were closed for next spring on the 6<sup>th</sup> of October. Going from that date there is 65% closed to date. However sever flooding last week has damaged grass quality on a couple of the lower lying paddocks and these areas will have to be grazed off with dry cows whenever ground conditions are suitable. Therefore paddocks 33 and 23 will have to be carried over to maintain the closing cover target of 550 kg DM / ha even though the covers are above ideal. These paddocks are on high ground and will be ideal for grazing early next spring.

9. Current rotation length is 50 days this means that the cows are grazing 1/50<sup>th</sup> of the available area per day (0.38ha).
10. Ground conditions are quite poor and some paddocks have had to be skipped because they are too wet to graze. We have been on-off grazing to help protect paddocks from excessive damage. The cows are being stood off on the pad and have had to be stood off and fed silage for three nights over the past week because conditions were so wet.
11. Total grass grown to date is 14.4 tons DM / ha.
12. Average post grazing residual for the week was 4.2cm.
13. We've had some trouble with lame cows over the past few weeks as farm roadways have got rough with heavy rain. Cows will be foot bathed once a week for the next few weeks to help harden their hooves for winter. Also cows are let walk to and from the parlour at their own pace as much as possible.
14. There have been three cases of mastitis this week all in the group of cows on the pad. The pad was re-chipped two weeks ago but is still too dirty for milking cows. All milkers will be housed in cubicles when culls are sold.
15. Calves and in-calf heifers were weighed last week. The calves averaged 204 kg; the majority of these are jersey crossbred calves. The in-calf heifers averaged 468 kg, 14 of the 30 heifers are JFX and 16 are NZ Fr.
16. Average milk yield is 11.2 kg at 5.35% fat and 3.95% protein (1.04kg MS/cow), lactose 4.84%, SCC 192k, TBC 9k.

**C. Critical short term actions :**

- Allocating grass in 12hr blocks.
- On/off grazing.
- Feeding 3kg concentrate and 2kg of bale silage.
- Grazing 1/50<sup>th</sup> of area per day.
- Monitor condition score.

[www.agresearch.teagasc.ie/moorepark/](http://www.agresearch.teagasc.ie/moorepark/)



<b>Week:30/10/11</b>	<b>HG system</b>	<b>HS system</b>
<b>Stocking rate (cows/ha)</b>	<b>3.1</b>	<b>4.6</b>
Milk yield (kg/cow/day)	11.2	11.5
% Fat	5.35	5.45
% Protein	3.95	3.70
% Lactose	4.84	4.85
Milk solids (kg/cow/day)	1.04	1.05
Supplement (kg/cow/day)		
Concentrate	3	3
Silage	2	7
<b>Cumulative</b>		
Milk yield (kg/cow)	4669	4531
% Fat	4.63	4.67
% Protein	3.65	3.61
% Lactose	4.83	4.83
Milk solids kg / cow ( kg / ha)	380 (1193)	373 (1715)
Bodyweight (kg)	488	489
Body Condition Score	2.92	2.94
Supplement (kg/cow)		
Concentrate	456	620
Silage to milking cows (kg DM/cow)	119	399
Maize (kg DM/cow)	0	0
Conserved silage (kg DM/cow)	784	189
Total silage fed ( kg DM/cow)	1100	1400