

Ballyhaise Weekly Farm Notes – Monday 13/11/2011

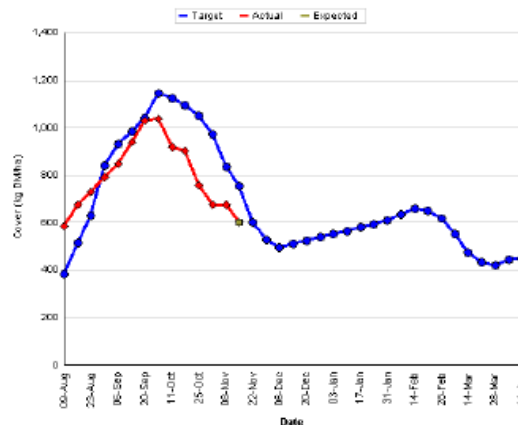
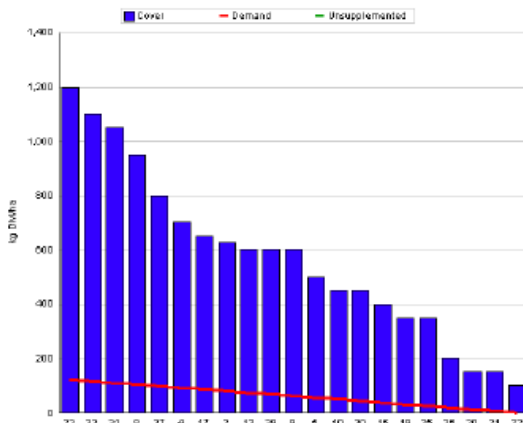
A. Critical Issues

1. Dry off thin cows.
2. Maintain condition score.
3. Control lameness.

B. On farm situation

1. Average growth was 4kg DM/ha/day, (13% DM).
2. Cows housed full time.
3. Feeding 3kg concentrate and 12kg of bale silage.
4. Rainfall for the last 7 days was 10mm.
5. Soil temperature is 10°C.
6. Farm feed wedge (13/11/11).

Moorepark Animal & Grassland Research and Innovation Centre		GrazePlan - Grass Measurement Report	
Group : TEAGASC RESEARCH FARMS		Date Produced : 16-NOV-11	
Farm : Ballyhaise Farm	Ballyhaise BMW region systems comparison		
Date : 14-NOV-11	Treatment : 3.1 stocking rate		
Rotation Length : 45 Grass Allocation /cow (kg grass dry matter/LL) : 0 Concentrate Fed (kg/cow) : 3 Silage Fed (kg DM/cow) : 12 N Application Rate (units/acre) : N Application Rate (kg/ha) : Residual Height : 4 Total Livestock : 52		Farm Cover (kg DM/ha) : 600 Farm Cover (kg DM/LU) : 222 Current Monthly Fertilizer Rate (kg/ha) : Stock Rate (LU/ha) : 2.71 Growth Rate : 4 Farm Demand (kg DM/LU/day) : 3 Target pregrazing yield (kg DM/ha) : 122 Forecast Growth Week 1 and 2:	



7. Milking cows were housed full time on the 11th of November. They are being fed 12 kg DM of bale silage and 3kg of concentrate in the parlour.
8. There are three paddocks which have had some flooding damage which will have to be grazed off with dry cows when ground conditions improve. With these paddocks taken out of the average farm cover closing cover is 525 KG DM /ha.
9. Total grass grown to date is 14.5 tons DM / ha.
10. Will dry off thin cows (2.5 or less) that are calving in February this week and heifers that are calving in February will also be dried to give them a 12 week dry period.

11. Dry cows are strip grazed on a paddock for a week after drying off. They will be put onto the cleanest part of the pad and fed ad-lib silage after that period.
12. All cows will be dosed for fluke and worms and treated for lice when the last of the cows have been dried off in the second week of January.
13. There have been no new cases of mastitis this week.
14. Calves and in-calf heifers were weighed at the end of October. The calves averaged 204 kg; the majority of these are jersey crossbred calves. The in-calf heifers averaged 468 kg, 14 of the 30 heifers are JFX and 16 are NZ Fr. Both batches of animals were housed on the 20th of October and were treated for fluke and worms last week. Heifers are being fed ad-lib silage and calves are being fed silage and 1kg of 18% protein ration.
15. Average milk yield is 10.09 kg at 5.58% fat and 4.08% protein (0.96kg MS/cow), lactose 4.64%, SCC 306k, TBC 12k.

C. Critical short term actions :

- Feeding 3kg concentrate and 12kg of bale silage.
- Monitor condition score.
- Drying off thin cows and heifers calving in Feb.

www.agresearch.teagasc.ie/moorepark/



Week:12/11/11	HG system	HS system
Stocking rate (cows/ha)	3.1	4.6
Milk yield (kg/cow/day)	10.09	9.82
% Fat	5.58	5.27
% Protein	4.08	3.92
% Lactose	4.64	4.66
Milk solids (kg/cow/day)	0.96	0.89
Supplement (kg/cow/day)		
Concentrate	3	3
Silage	12	12
Cumulative		
Milk yield (kg/cow)	4761	4677
% Fat	4.65	4.68
% Protein	3.66	3.61
% Lactose	4.82	4.82
Milk solids kg / cow (kg / ha)	394 (1237)	381 (1752)
Bodyweight (kg)	506	429
Body Condition Score	2.84	2.93
Supplement (kg/cow)		
Concentrate	496	659
Silage to milking cows (kg DM/cow)	211	521
Maize (kg DM/cow)	0	0
Conserved silage (kg DM/cow)	784	189
Total silage fed (kg DM/cow)	1100	1400